



Chipsmall Limited consists of a professional team with an average of over 10 year of expertise in the distribution of electronic components. Based in Hongkong, we have already established firm and mutual-benefit business relationships with customers from,Europe,America and south Asia,supplying obsolete and hard-to-find components to meet their specific needs.

With the principle of “Quality Parts,Customers Priority,Honest Operation,and Considerate Service”,our business mainly focus on the distribution of electronic components. Line cards we deal with include Microchip,ALPS,ROHM,Xilinx,Pulse,ON,Everlight and Freescale. Main products comprise IC,Modules,Potentiometer,IC Socket,Relay,Connector.Our parts cover such applications as commercial,industrial, and automotives areas.

We are looking forward to setting up business relationship with you and hope to provide you with the best service and solution. Let us make a better world for our industry!



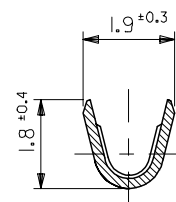
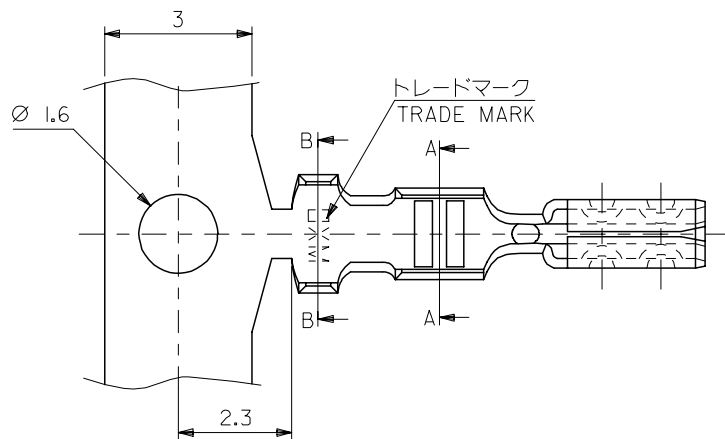
Contact us

Tel: +86-755-8981 8866 Fax: +86-755-8427 6832

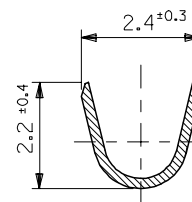
Email & Skype: info@chipsmall.com Web: www.chipsmall.com

Address: A1208, Overseas Decoration Building, #122 Zhenhua RD., Futian, Shenzhen, China

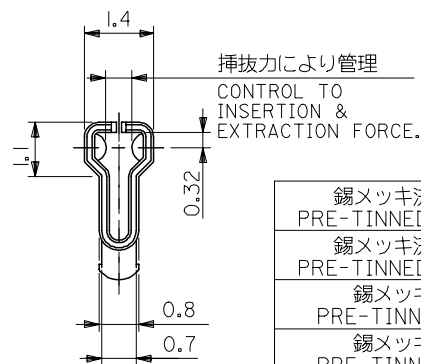
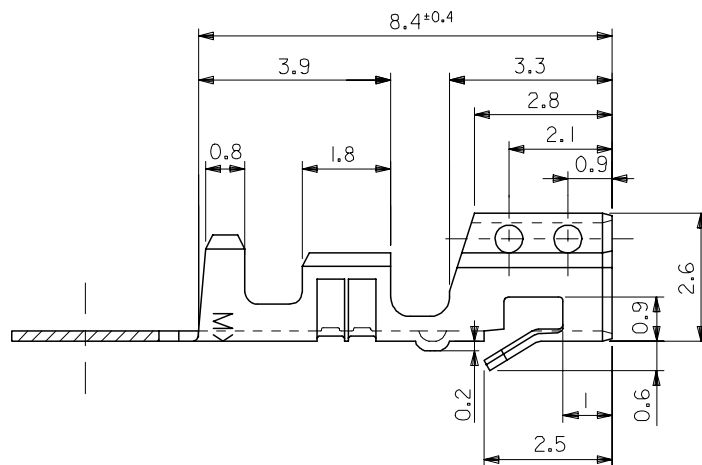




断面 A-A
SECT. A-A



断面 B-B
SECT. B-B



注記 NOTES:

- I. 適合ハウジング:
APPLICABLE HOUSING:
5102-N,5207-N,5208-N,5209-N

錫メッキ済リン青銅 PRE-TINNED PHOS-BRO.	08-70-0059	5103PBT	バラ状 LOOSE
錫メッキ済リン青銅 PRE-TINNED PHOS-BRO.	08-70-0058	5103PBT	連鎖状 CHAIN
錫メッキ済黄銅 PRE-TINNED BRASS	08-70-0057	5103TL	バラ状 LOOSE
錫メッキ済黄銅 PRE-TINNED BRASS	08-70-0056	5103T	連鎖状 CHAIN
材料 MATERIAL	EDP NO.	ENG. NO.	端子形状 FORM

材 料 MATERIAL		表参照 (t=0.203) SEE TABLE		REVISED EC NO: J2006-3417 DRAWNG: SAI T001 CHKD: MTANAKA APPR: NUKITA	DESCRIPTION	GENERAL TOLERANCES (UNLESS SPECIFIED)		DIMENSION STYLE MM ONLY		SCALE 10:1	DESIGN UNITS METRIC	THIRD ANGLE PROJECTION						
適用電線範囲 WIRE RANGE		AWG #22 ~28 0.33~0.08mm ²				10 UNDER	± 0.2	DRAWN BY K. TOJO	DATE 1990/12/25	TITLE MINI SPOX CRIMP REC								
						10 OVER 30 UNDER	± 0.25	CHECKED BY H. HIRAMOTO	DATE 1996/03/04									
被 覆 外 径 INS. RANGE		Ø1.15 ~ Ø1.9				30 OVER	± 0.3	APPROVED BY M. FUKUSHIMA	DATE 1996/03/04						molex MOLEX INCORPORATED			
						ANGULAR ±3 °		MATERIAL NO.		DOCUMENT NO.		SHEET NO.						
						DRAFT WHERE APPLICABLE MUST REMAIN WITHIN DIMENSIONS		SEE CHART		SD-5103-002		1 OF 1						
								SIZE A3		THIS DRAWING CONTAINS INFORMATION THAT IS PROPRIETARY TO MOLEX INCORPORATED AND SHOULD NOT BE USED WITHOUT WRITTEN PERMISSION								