



Chipsmall Limited consists of a professional team with an average of over 10 year of expertise in the distribution of electronic components. Based in Hongkong, we have already established firm and mutual-benefit business relationships with customers from,Europe,America and south Asia,supplying obsolete and hard-to-find components to meet their specific needs.

With the principle of “Quality Parts,Customers Priority,Honest Operation,and Considerate Service”,our business mainly focus on the distribution of electronic components. Line cards we deal with include Microchip,ALPS,ROHM,Xilinx,Pulse,ON,Everlight and Freescale. Main products comprise IC,Modules,Potentiometer,IC Socket,Relay,Connector.Our parts cover such applications as commercial,industrial, and automotives areas.

We are looking forward to setting up business relationship with you and hope to provide you with the best service and solution. Let us make a better world for our industry!



Contact us

Tel: +86-755-8981 8866 Fax: +86-755-8427 6832

Email & Skype: info@chipsmall.com Web: www.chipsmall.com

Address: A1208, Overseas Decoration Building, #122 Zhenhua RD., Futian, Shenzhen, China



08010300 DUAL POLE BATTERY DISCONNECT SWITCHES

250A • DPST • IP65 • M10 Studs



Description

Dual Pole Manual Battery Disconnect Switch features model with a removable handle with chain so it never gets lost or a model with a fixed handle with integrated Lock-Out Tag-Out for applications where required. The handle has a rubber gasket at the base to ensure proper sealing and some with three colors for quick identification.

Features/Benefits

- 250A continuous current rating
- Equipped with red, yellow and black rubber caps to mark differentiate between function or application
- Waterproof and dustproof to IP65
- Removable handle model keeps the actuator nearby with an attached chain to prevent loss during servicing
- Fixed handle model includes integrated Lock-Out Tag-Out
- 08010100 is cross-references to BOSCH 1342026002 and it is compatible with the locking bracket LS 11003

Specifications

Max Operating Voltage:	24V DC
Max Continuous Current:	250A
Intermittent Current:	2500A at 3 sec
Operating Temp:	-40°C to +85°C
Ingress Protection:	IP65
Contacts:	Silver-Plated Copper
Terminals:	M10 (zinc-plated steel)

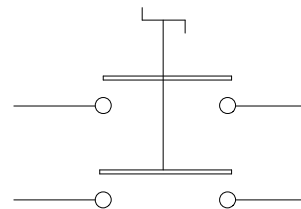
Applications

- Heavy Truck
- Off-Road
- Emergency Vehicles
- Material Handling
- Mining
- Agricultural
- Marine
- Construction

Web Resources

Download 2D prints and additional technical resources at: littelfuse.com/ManualBatterySwitches

Electrical Diagram



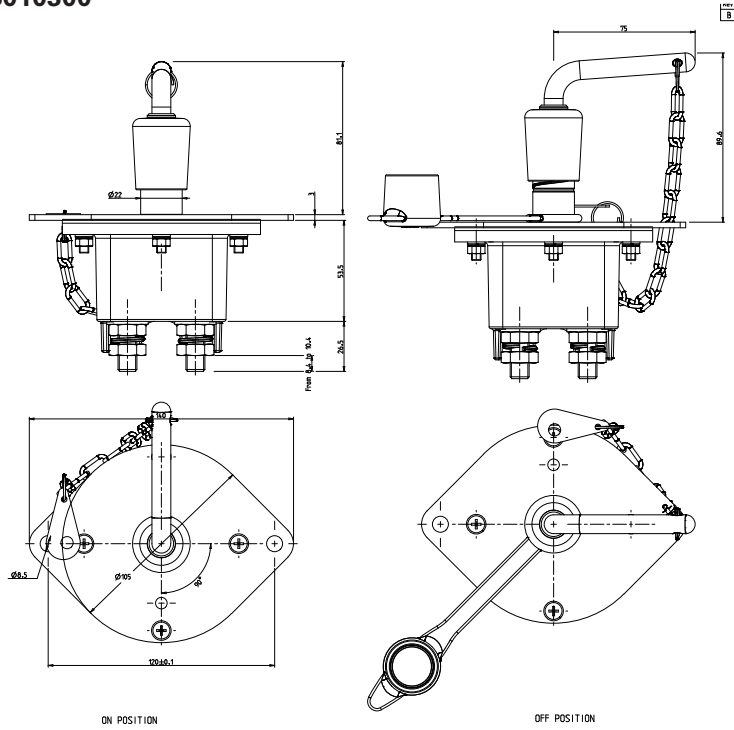
Ordering Information

PART NUMBERS		VOLTAGE	AMPERAGE	CIRCUITRY	MOUNTING	INGRESS	NOTES
BULK	BOXED						
08010300	08010300-BX	24V DC	250A	DPST	Flange Mount	IP65	Removable Handle w/ Chain Cap to cover when key is removed
08010360	08010360-BX	24V DC	250A	DPST	Flange Mount	IP65	Fixed Handle Integrated Lock-Out Tag-Out

08010300 DUAL POLE BATTERY DISCONNECT SWITCHES

Dimensions in inches (millimeters)

08010300



08010360

