



Chipsmall Limited consists of a professional team with an average of over 10 year of expertise in the distribution of electronic components. Based in Hongkong, we have already established firm and mutual-benefit business relationships with customers from,Europe,America and south Asia,supplying obsolete and hard-to-find components to meet their specific needs.

With the principle of “Quality Parts,Customers Priority,Honest Operation,and Considerate Service”,our business mainly focus on the distribution of electronic components. Line cards we deal with include Microchip,ALPS,ROHM,Xilinx,Pulse,ON,Everlight and Freescale. Main products comprise IC,Modules,Potentiometer,IC Socket,Relay,Connector.Our parts cover such applications as commercial,industrial, and automotives areas.

We are looking forward to setting up business relationship with you and hope to provide you with the best service and solution. Let us make a better world for our industry!



Contact us

Tel: +86-755-8981 8866 Fax: +86-755-8427 6832

Email & Skype: info@chipsmall.com Web: www.chipsmall.com

Address: A1208, Overseas Decoration Building, #122 Zhenhua RD., Futian, Shenzhen, China



08098700 & 08099080 BATTERY DISCONNECT SWITCHES

100-150A • SPST • UP4X/IP43 • M8-M10 Studs • Compact



Description

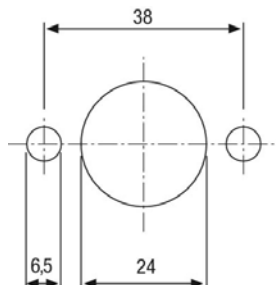
08098700 is Standard Compact Manual Battery Disconnect Switch that features a removable handle with a plastic body. Rated to 100A continuous current this switch is ideal light-duty applications.

08099080 is a newer design with bigger contacts (M10) and improved components for heavier 150A current loads even if keeping the compact dimensions, which make it one of the more popular products for 12V applications. This Manual Battery Disconnect Switch features a removable handle with a plastic body. Rubbed cap is included for protection while switch is removed from the socket.

Features/Benefits

- 100-150A continuous current rating
- Heavy Construction for up to 150A loads in compact design
- Highly visible bright red handle
- Weatherproof to IP43

Mounting Diagram



Specifications

Max Operating Voltage:	24V DC
Max Continuous Current:	100A 150A
Intermittent Current:	500A at 5 sec 1000A at 5 sec
Operating Temp:	-40°C to +85°C
Ingress Protection:	IP4X IP43
Contacts:	Copper
Terminals:	M8 (brass nuts) M10 (zinc-plated steel nuts)

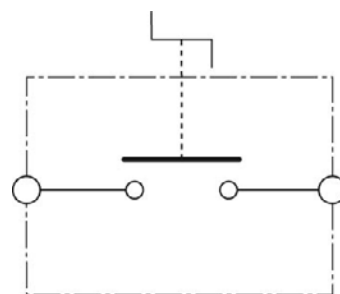
Applications

- Heavy Truck
- Off-Road
- Emergency Vehicles
- Material Handling
- Mining
- Agricultural
- Marine
- Construction

Web Resources

Download 2D prints and additional technical resources at:
littelfuse.com/ManualBatterySwitches

Electrical Diagram



Ordering Information

PART NUMBERS		VOLTAGE	AMPERAGE	CIRCUITRY	MOUNTING	INGRESS	TERMINAL NUTS
BULK	BOXED						
08098700	08098700-BX	12-24V DC	100A	SPST	Flange Mount	IP4X	-
08098780	08098780-BX	12-24V DC	150A	SPST	Flange Mount	IP4X	Brass
08099080	08099080-BX	12-24V DC	150A	SPST	Flange Mount	IP43	Zinc-plated steel

08098700 & 08099080 BATTERY DISCONNECT SWITCHES

Dimensions in millimeters

