



Chipsmall Limited consists of a professional team with an average of over 10 year of expertise in the distribution of electronic components. Based in Hongkong, we have already established firm and mutual-benefit business relationships with customers from,Europe,America and south Asia,supplying obsolete and hard-to-find components to meet their specific needs.

With the principle of “Quality Parts,Customers Priority,Honest Operation,and Considerate Service”,our business mainly focus on the distribution of electronic components. Line cards we deal with include Microchip,ALPS,ROHM,Xilinx,Pulse,ON,Everlight and Freescale. Main products comprise IC,Modules,Potentiometer,IC Socket,Relay,Connector.Our parts cover such applications as commercial,industrial, and automotives areas.

We are looking forward to setting up business relationship with you and hope to provide you with the best service and solution. Let us make a better world for our industry!



## Contact us

Tel: +86-755-8981 8866 Fax: +86-755-8427 6832

Email & Skype: info@chipsmall.com Web: www.chipsmall.com

Address: A1208, Overseas Decoration Building, #122 Zhenhua RD., Futian, Shenzhen, China

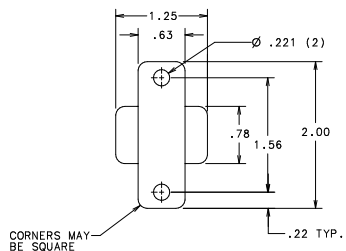


| PART NUMBER W/O MOUNTING BRACKET | PART NUMBER W/ MOUNTING BRACKET | CIRCUIT BREAKER RATING      |
|----------------------------------|---------------------------------|-----------------------------|
| 0812005.ZXST                     | 0813005.ZXST                    | 12V/24V 5A CIRCUIT BREAKER  |
| 0812006.ZXST                     | 0813006.ZXST                    | 12V/24V 6A CIRCUIT BREAKER  |
| 0812008.ZXST                     | 0813008.ZXST                    | 12V/24V 8A CIRCUIT BREAKER  |
| 0812010.ZXST                     | 0813010.ZXST                    | 12V/24V 10A CIRCUIT BREAKER |
| 0812015.ZXST                     | 0813015.ZXST                    | 12V/24V 15A CIRCUIT BREAKER |
| 0812020.ZXST                     | 0813020.ZXST                    | 12V/24V 20A CIRCUIT BREAKER |
| 0812025.ZXST                     | 0813025.ZXST                    | 12V/24V 25A CIRCUIT BREAKER |
| 0812030.ZXST                     | 0813030.ZXST                    | 12V/24V 30A CIRCUIT BREAKER |
| 0812035.ZXST                     | 0813035.ZXST                    | 12V/24V 35A CIRCUIT BREAKER |
| 0812040.ZXST                     | 0813040.ZXST                    | 12V/24V 40A CIRCUIT BREAKER |
| 0812045.ZXST                     | 0813045.ZXST                    | 12V/24V 45A CIRCUIT BREAKER |
| 0812050.ZXST                     | 0813050.ZXST                    | 12V/24V 50A CIRCUIT BREAKER |

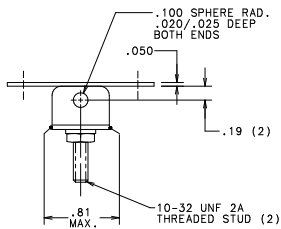
| LTR | DATE     | REVISION   | CHK | APP |
|-----|----------|--|-----|-----|
| C   | 10/29/01 | 816560-REDRAW IN NEW FORMAT CHG RATING FROM 12V TO 12V/24V | PJM |     |
| D   | 07/26/04 | 836268-ADD #10-32 STEEL HEX LOCK NUT                       | PJM |     |
|     |          |  |     |     |
|     |          |  |     |     |
|     |          |  |     |     |
|     |          |  |     |     |
|     |          |  |     |     |
|     |          |  |     |     |
|     |          |  |     |     |
|     |          |  |     |     |
|     |          |  |     |     |
|     |          |  |     |     |
|     |          |  |     |     |
|     |          |  |     |     |
|     |          |  |     |     |
|     |          |  |     |     |
|     |          |  |     |     |
|     |          |  |     |     |
|     |          |  |     |     |
|     |          |  |     |     |
|     |          |  |     |     |
|     |          |  |     |     |

**NOTES:**

- SPECIFICATIONS: TIME/CURRENT  
 100% OF RATING: CARRY INDEFINITELY @ AN AMBIENT TEMP OF 77°F.  
 125% OF RATING: OPEN WITHIN 60 MINUTES  
 200% OF RATING: OPEN WITHIN 10 SECONDS AND RECLOSE WITHIN 10 SECONDS.
- MATERIAL & FINISHES  
 BASE: PHENOLIC NO FINISH  
 COVER: STEEL .00015 MIN. ZINC PLATE PLUS DICHROMATE
- 0812000.ZXST AND 0813000.ZXST SERIES MEETS SAE SPEC. J553C.
- INTERNAL COMPONENTS IDENTICAL EXCEPT FOR MOUNTING BRACKET.

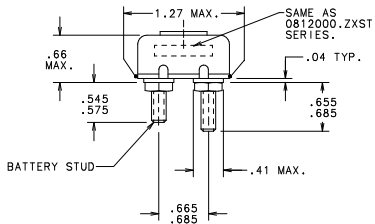
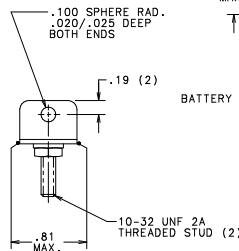
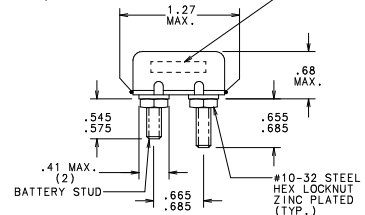


0813000.ZXST SERIES



0812000.ZXST SERIES

VOLTAGE, AMPERAGE, & THREE DIGIT DATE CODE (NUMERICAL WEEK OF YEAR & LAST DIGIT OF YEAR) STAMPED IN AREA SHOWN, EITHER SIDE.



| NO  | COMPONENT NO | DESCRIPTION | QTY/M | U/M        |
|---|--------------|-------------|-------|------------|
| <b>BILL OF MATERIAL</b>   |              |             |       |            |
| UNLESS OTHERWISE SPECIFIED, DIMENSIONS DO NOT INCLUDE PLATING.  |              |             |       |            |
| O DENOTES CRITICAL CHARACTERISTICS.   |              |             |       |            |
| CPK DENOTES CPK DIMENSIONS, -MINIMUM CPK VALUE  |              |             |       |            |
| (ST) DENOTES A CHARACTERISTIC THAT PROVIDES AN INDICATION OF PROCESS PERFORMANCE, PROCEDURE FOR MEASUREMENT AND TRACKING TO BE DEFINED IN THE LITTELFUSE INSPECTION INSTRUCTIONS. |              |             |       |            |
| CP DENOTES CP DIMENSIONS, -MINIMUM CP VALUE MUST BE WITHIN THE DIMENSIONAL LIMITATIONS SHOWN ON DRAWING AND INITIALLY LOCATED TO ALLOW FOR MAXIMUM TOOL LIFE.                     |              |             |       |            |
| MATERIAL SPECIFICATIONS   |              |             |       |            |
| COPIES TO   |              |             |       |            |
| 1   | 9            | 18          |       |            |
| 2   | 10           | 19          |       |            |
| 3   | 12           | 20          |       |            |
| 4   | 13           | 21          |       |            |
| 5   | 14           | 23          |       | FULL       |
| 6   | 15           | 33          |       | TAPE DR    |
| 7   | 16           | 43          |       | RAW STK WT |
| 8   | 17           | 53          |       | LBS/M      |
| TOLERANCE UNLESS OTHERWISE SPECIFIED  |              |             |       |            |
| FRACTION ±  |              |             |       |            |
| ANGULAR ±   |              |             |       |            |
| CIRCUIT BREAKER   |              |             |       |            |
| AUTOMATIC RESET WITH W/O BRACKET  |              |             |       |            |

