



Chipsmall Limited consists of a professional team with an average of over 10 year of expertise in the distribution of electronic components. Based in Hongkong, we have already established firm and mutual-benefit business relationships with customers from,Europe,America and south Asia,supplying obsolete and hard-to-find components to meet their specific needs.

With the principle of “Quality Parts,Customers Priority,Honest Operation,and Considerate Service”,our business mainly focus on the distribution of electronic components. Line cards we deal with include Microchip,ALPS,ROHM,Xilinx,Pulse,ON,Everlight and Freescale. Main products comprise IC,Modules,Potentiometer,IC Socket,Relay,Connector.Our parts cover such applications as commercial,industrial, and automotives areas.

We are looking forward to setting up business relationship with you and hope to provide you with the best service and solution. Let us make a better world for our industry!



Contact us

Tel: +86-755-8981 8866 Fax: +86-755-8427 6832

Email & Skype: info@chipsmall.com Web: www.chipsmall.com

Address: A1208, Overseas Decoration Building, #122 Zhenhua RD., Futian, Shenzhen, China



NOTES:

1. MATERIALS AND FINISHES:

BODY - BRASS, ALBALOY PLATING

CONTACT -BRASS, GOLD PLATING

INSULATOR - PTFE, NATURAL

2. ELECTRICAL:

A. IMPEDANCE: 50 OHM

B. FREQUENCY RANGE: 0 - 11 GHz

C. VSWR: 1.3 MAX.@ DC - 6 GHz

D. DIELECTRIC WITHSTANDING VOLTAGE: 2500 VRMS, MIN.

3. MECHANICAL:

A. DURABILITY: 500 CYCLES MIN.

B. TEMPERATURE RANGE: -65°C TO +165°C

4. CRIMPED FERRULE

HEX. CRIMP SIZE .255"

5. CRIMPED CONTACT PIN

HEX. CRIMP SIZE .100" OR SOLDER

THIRD ANGLE PROJ.

REV

DESCRIPTION

DATE

ECO

APPR

A

RELEASE TO MFG.

21-Nov-08

--

MZ

B

ADDED PART NO.\RD-DM09061801M

25-Jun-09

47595

SH

C

"82-6152" WAS "81-6152"\RD-DM09110201M

02-Nov-09

47870

SH

D

ADDED NOTE 2.C\RD-DM12041301M

20-Apr-12

--

DH

E

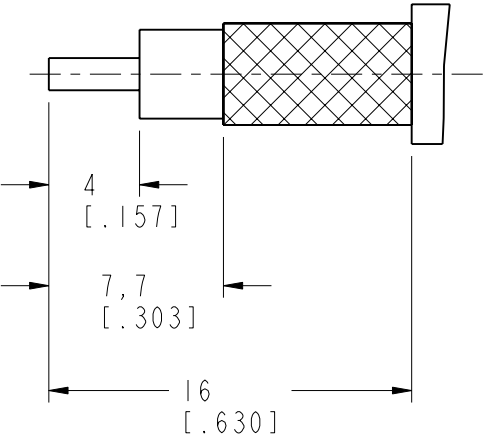
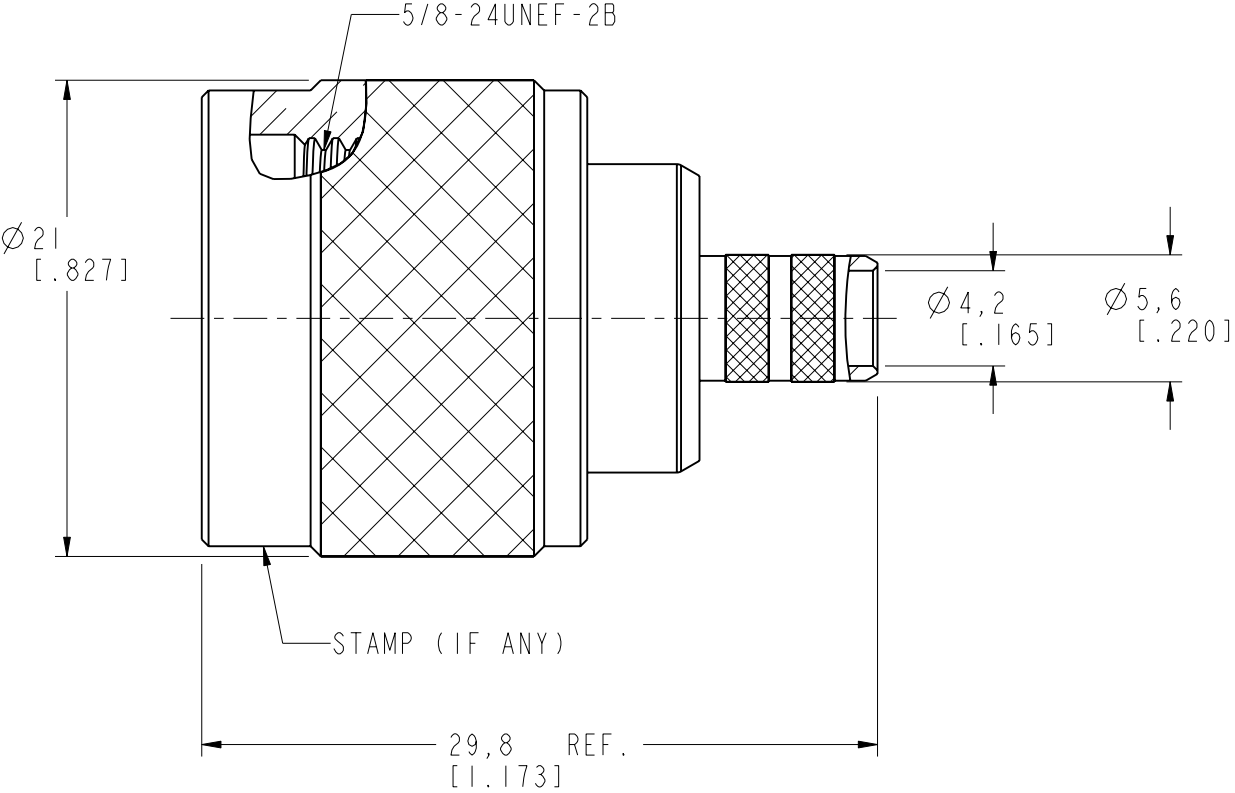
ADDED SOLDER CONTACT TO NOTE 5\RD-DM14031701M

16-Apr-14

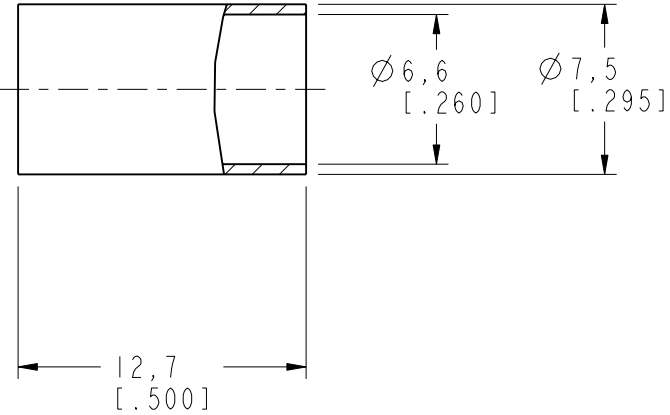
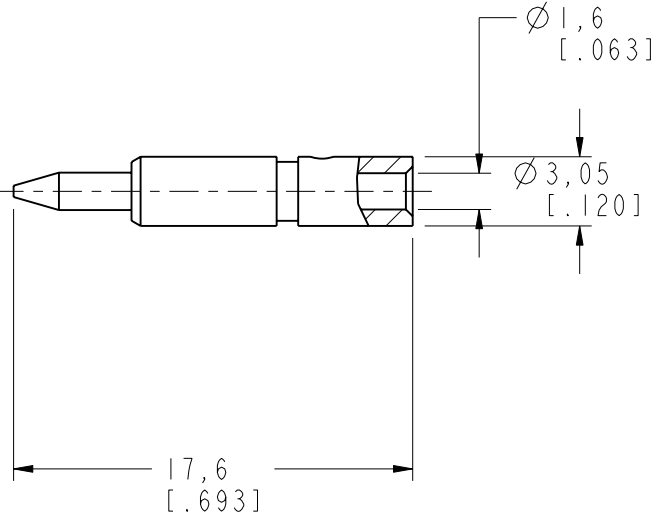
49929

SH

SCALE 1.000



RECOMMENDED
CABLE STRIPPING DIM'S



CUSTOMER OUTLINE DRAWING

ALL OTHER SHEETS ARE FOR INTERNAL USE ONLY

<div>UNLESS OTHERWISE SPECIFIED, DIMENSIONS ARE IN METRIC AND TOLERANCES ARE: <0.5mm 0.5 - 6mm 6 - 30mm 30 - 120mm ANGLES ± 0.05mm ±0.1mm ±0.2mm ± 0.3mm ±1°</div> <div>NOTICE - These drawings, specifications, or other data (1) are, and remain the property of Amphenol corp. (2) must be returned upon request; and (3) are confidential and not to be disclosed to any person other than those to whom they are given by Amphenol Corp. the furnishing of these drawings, specifications, or other data by Amphenol Corp., or to any other person to anyone for any purpose is not to be regarded by implication or otherwise in any manner licensing, granting rights to permitting such holder or any other person to manufacture, use or sell any product, process or design, patented or otherwise, that may in any way be related to or disclosed by said drawings, specifications, or other data.</div>	MATERIAL		DRAWN	DATE	TITLE		Amphenol RF Danbury CT USA, Tainan, Taiwan, Shenzhen, China www.amphenolrf.com	
	-		M. ZHANG	13-Mar-14				
			ENGINEER	DATE	N CRIMP PLUG (FOR LMR-240, RG-8/X)		DRAWING NO. N1121A1-AT5GP-8X-50	
	REFERENCE EAR # AND		C. WANG	21-Nov-08			ITEM NO. 031121AAA89CP5F	
	CONFIGURATION LEVEL: Prototype		APPROVED	DATE	SCALE: 3.0:1.0 SHEET 2 OF 2		PART NO. 82-6152	
FINISH		CAD FILE		DWG SIZE	REV			
		Root Folder/N/N1121A1-AT5GP-8X-50		B	E			