



Chipsmall Limited consists of a professional team with an average of over 10 year of expertise in the distribution of electronic components. Based in Hongkong, we have already established firm and mutual-benefit business relationships with customers from,Europe,America and south Asia,supplying obsolete and hard-to-find components to meet their specific needs.

With the principle of “Quality Parts,Customers Priority,Honest Operation,and Considerate Service”,our business mainly focus on the distribution of electronic components. Line cards we deal with include Microchip,ALPS,ROHM,Xilinx,Pulse,ON,Everlight and Freescale. Main products comprise IC,Modules,Potentiometer,IC Socket,Relay,Connector.Our parts cover such applications as commercial,industrial, and automotives areas.

We are looking forward to setting up business relationship with you and hope to provide you with the best service and solution. Let us make a better world for our industry!



## Contact us

Tel: +86-755-8981 8866 Fax: +86-755-8427 6832

Email & Skype: info@chipsmall.com Web: www.chipsmall.com

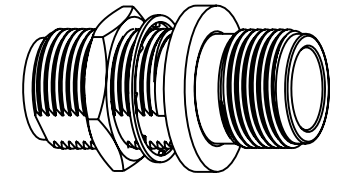
Address: A1208, Overseas Decoration Building, #122 Zhenhua RD., Futian, Shenzhen, China



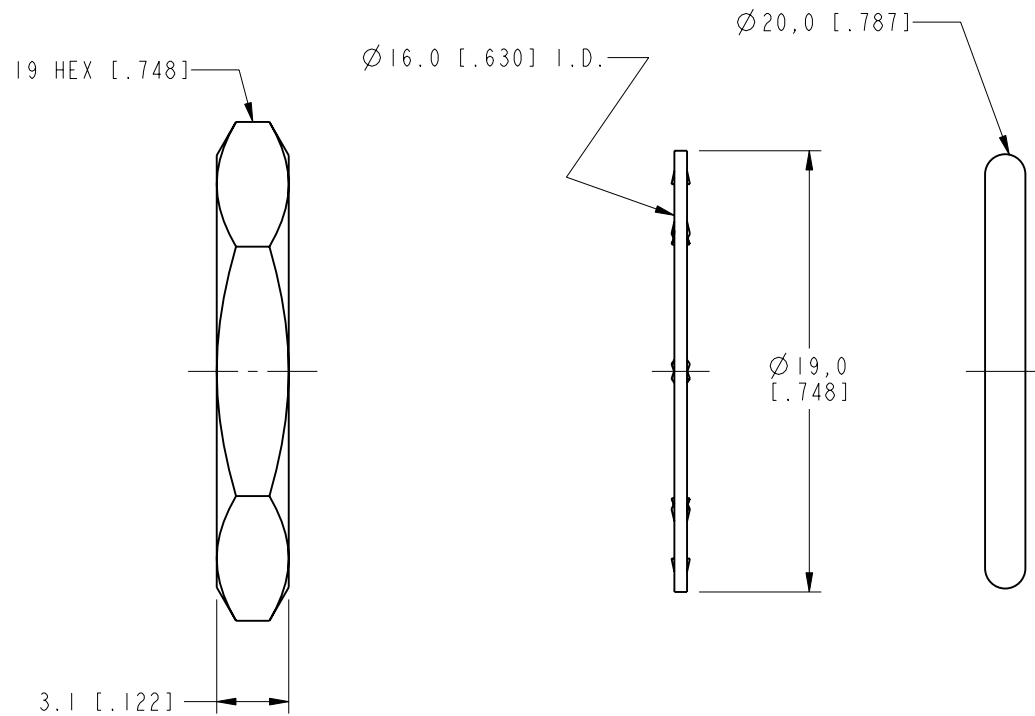
NOTES:

1. MATERIALS OF CONSTRUCTION:  
 BODY - STAINLESS STEEL, PASSIVATED  
 HEX NUT, - BRASS (ASTM-B16 H02, C36000), NICKEL PLATED (.000080 MIN)  
 CONTACT PIN - PHOSPHOR BRONZE, GOLD PLATED (.000050 MIN)  
 INSULATOR - PTFE PER ASTM D 1710 OR EQUIV  
 GASKET - SILICONE RUBBER, COLOR RED  
 LOCKWASHER - BRASS (QQ-B-613), NICKEL PLATED (.000080 MIN)
2. ELECTRICAL:  
 A. IMPEDANCE: 50 OHM  
 B. FREQUENCY RANGE: DC - 11 GHz  
 C. DIELECTRIC WITHSTANDING VOLTAGE: 2500 VRMS, MIN.
3. MECHANICAL:  
 A. DURABILITY: 1000 CYCLES MIN.  
 B. TEMPERATURE RANGE: -65° C TO +165° C
4. PACKAGING:  
 A. QUANTITY: SINGLE PACK  
 B. MARKING: BAG TO BE MARKED  
 "AMPHENOL, 82-6348, AND DATE CODE"

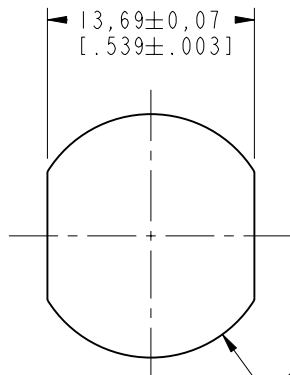
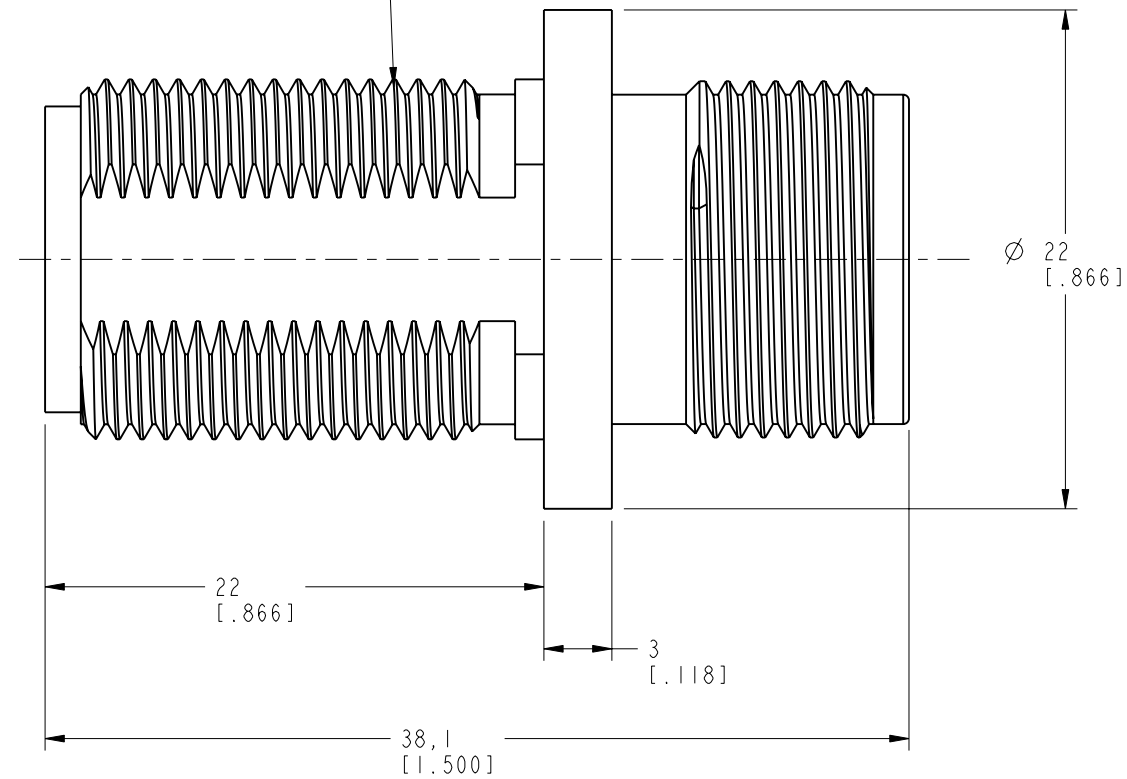
|                   |     |                 |         |       |      |
|-------------------|-----|-----------------|---------|-------|------|
| 82-6348           |     | REVISIONS       |         |       |      |
| DRAWING NO.       | REV | DESCRIPTION     | DATE    | ECO   | APPR |
| THIRD ANGLE PROJ. | A   | RELEASE TO MFG. | 1/21/05 | 45348 | CPM  |



SCALE 1.000



.625-24UNEF-2A THREAD REF.  
TYP. BOTH ENDS



RECOMMENDED  
MOUNTING HOLE  
SCALE 2.000

**CUSTOMER OUTLINE DRAWING**

ALL OTHER SHEETS ARE FOR INTERNAL USE ONLY

UNLESS OTHERWISE SPECIFIED, DIMENSIONS ARE IN MM (INCHES) AND TOLERANCES ARE:  
 0.5 - 6mm ±0.2mm    6 - 30mm ±0.4mm    30 - 120mm ±0.6mm

NOTICE - These drawings, specifications, or other data (1) are, and remain the property of Amphenol Corp. (2) must be returned upon request; and (3) are confidential and not to be disclosed to any person other than those to whom they are given by Amphenol Corp. The furnishing of these drawings, specifications, or other data by Amphenol Corp., or to any other person to anyone for any purpose is not to be regarded by implication or otherwise in any manner licensing, granting rights or permitting such holder or any other person to manufacture, use or sell any product, process or design, patented or otherwise, that may in any way be related to or disclosed by said drawings, specifications, or other data.

|                |               |          |                                       |
|----------------|---------------|----------|---------------------------------------|
| MATERIAL       | DRAWN         | DATE     | TITLE                                 |
|                | C. McGRATH    | 10/29/04 | 'N' (F) TO (F)<br>BULKHEAD<br>ADAPTOR |
|                | ENGINEER      | DATE     |                                       |
|                | O. BARTHELMES | 10/29/04 |                                       |
| REFERENCE      | APPROVED      | DATE     |                                       |
| EAR 1566       | O. BARTHELMES | 1/21/05  |                                       |
| GEN# ASSYF41_N | CAD FILE      |          |                                       |
|                | I:\N\82-6348  |          |                                       |

|         |          |             |     |
|---------|----------|-------------|-----|
| CODE ID | DWG SIZE | DRAWING NO. | REV |
| 74868   | B        | 82-6348     | A   |

|              |              |
|--------------|--------------|
| SCALE: 3.0:1 | SHEET 2 OF 2 |
|--------------|--------------|

**Amphenol**  
 Amphenol Corporation  
 Communication and Network  
 Products Division  
 Danbury, CT U.S.A. 06810