



Chipsmall Limited consists of a professional team with an average of over 10 year of expertise in the distribution of electronic components. Based in Hongkong, we have already established firm and mutual-benefit business relationships with customers from,Europe,America and south Asia,supplying obsolete and hard-to-find components to meet their specific needs.

With the principle of “Quality Parts,Customers Priority,Honest Operation,and Considerate Service”,our business mainly focus on the distribution of electronic components. Line cards we deal with include Microchip,ALPS,ROHM,Xilinx,Pulse,ON,Everlight and Freescale. Main products comprise IC,Modules,Potentiometer,IC Socket,Relay,Connector.Our parts cover such applications as commercial,industrial, and automotives areas.

We are looking forward to setting up business relationship with you and hope to provide you with the best service and solution. Let us make a better world for our industry!



## Contact us

Tel: +86-755-8981 8866 Fax: +86-755-8427 6832

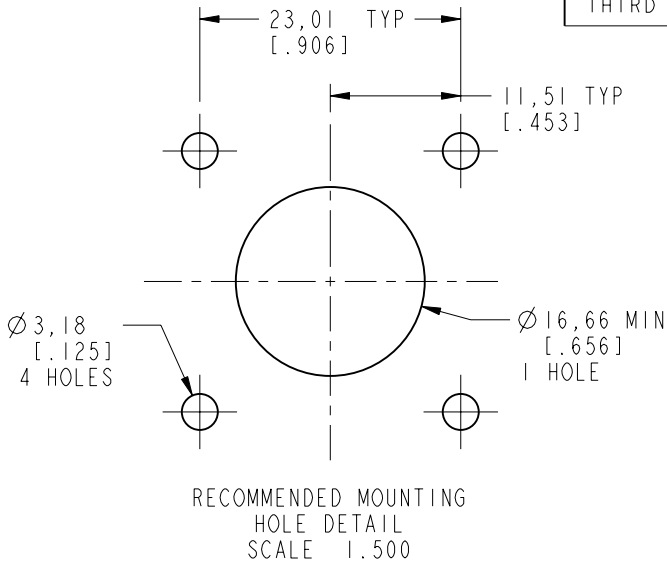
Email & Skype: [info@chipsmall.com](mailto:info@chipsmall.com) Web: [www.chipsmall.com](http://www.chipsmall.com)

Address: A1208, Overseas Decoration Building, #122 Zhenhua RD., Futian, Shenzhen, China



NOTES:

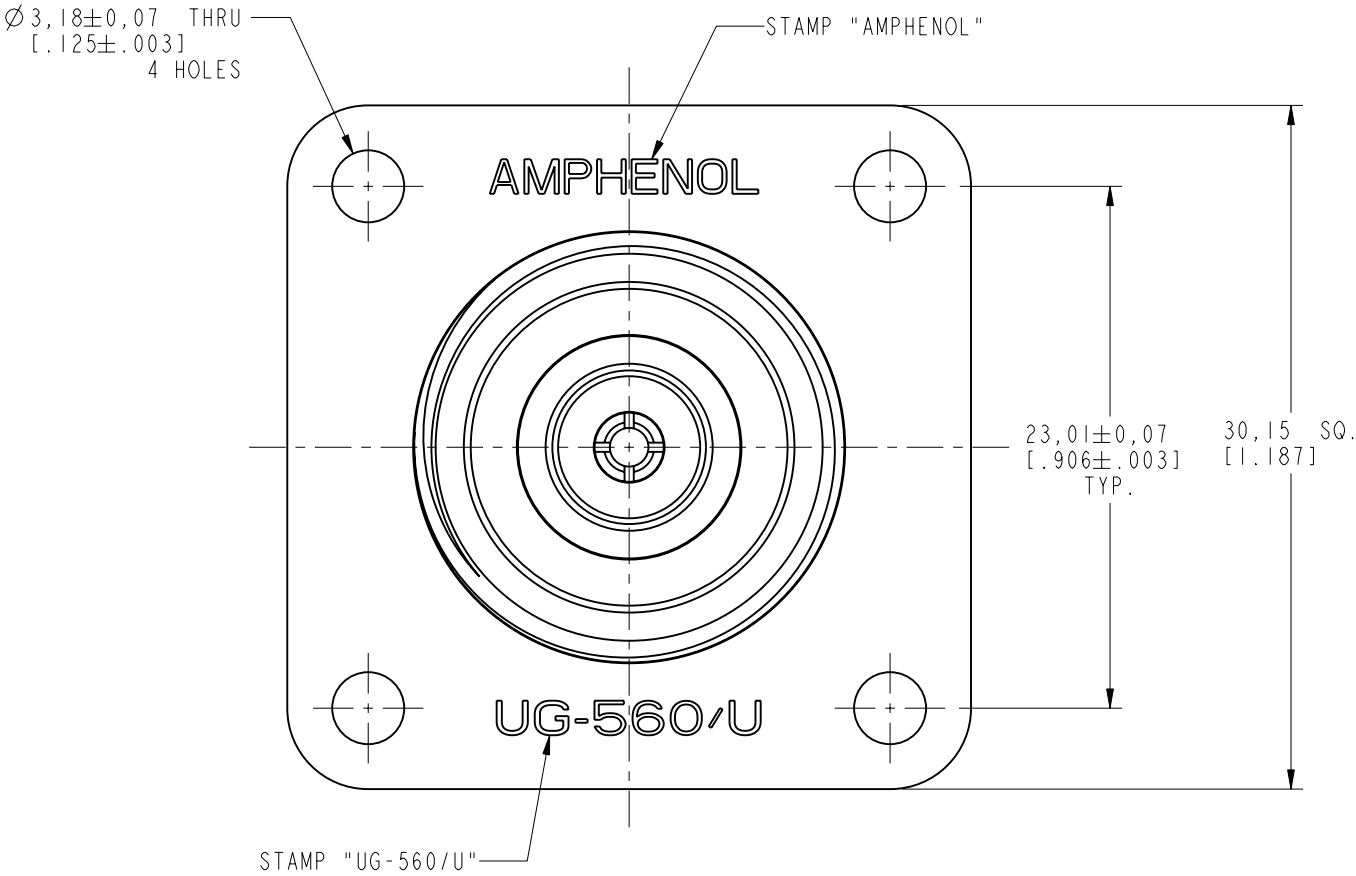
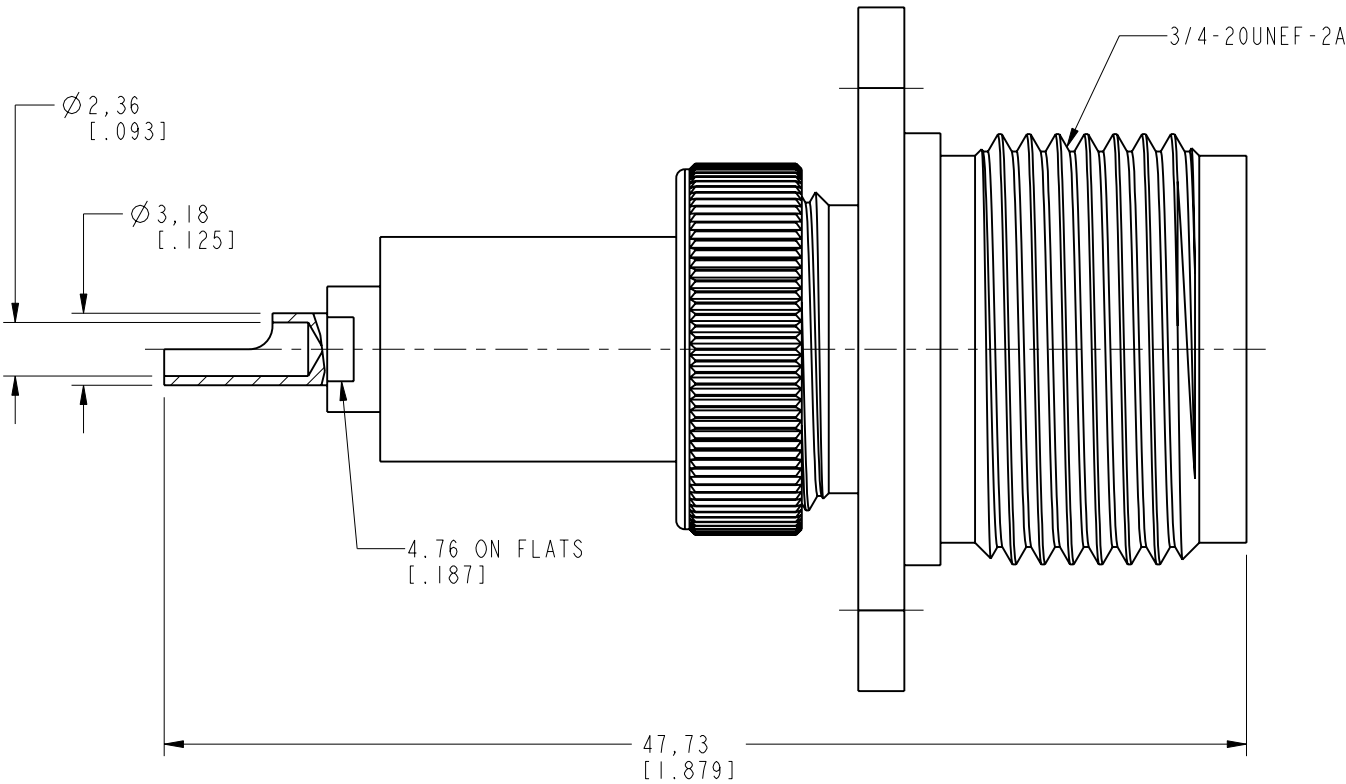
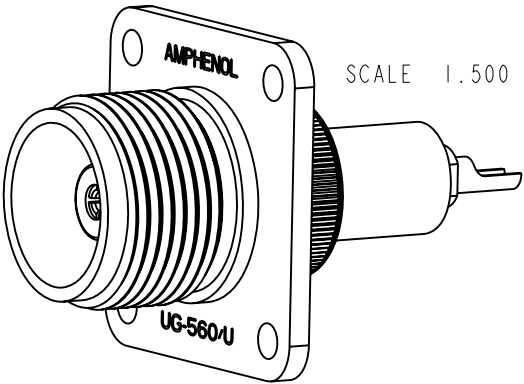
1. MATERIALS AND FINISHES(PLATING THICKNESS IN MICRO-INCHES):  
BODY & FLANGE - BRASS, NICKEL PLATING  
CONTACT - BERYLLIUM COPPER, SILVER PLATING  
CONTACT STUD - BRASS, SILVER PLATING  
INSULATOR - PTFE
2. PACKAGING:  
A. PACKAGE CONNECTOR 8 PC PER TRAY.  
B. MARK "82-805 YYWW"



THIRD ANGLE PROJ.

REVISIONS

REV	DESCRIPTION	DATE	ECO	APPR
N	STAMP "AMPHENOL " WAS "74868 " \RD-DM12040501R3	19-Apr-12	48877	DH



CUSTOMER OUTLINE DRAWING

ALL OTHER SHEETS ARE FOR INTERNAL USE ONLY

UNLESS OTHERWISE SPECIFIED, DIMENSIONS ARE IN METRIC AND TOLERANCES ARE: <0.5mm ± 0.05mm    0.5 - 6mm ± 0.1mm    6 - 30mm ± 0.2mm    30 - 120mm ± 0.3mm    ANGLES ± 1°	MATERIAL -	DRAWN R. MAO	DATE 08-Mar-12	TITLE 'HN' RECEPTACLE UG-560/U		Amphenol RF Danbury CT USA, Tainan, Taiwan, Shenzhen, China www.amphenolrf.com	
		ENGINEER O. BARTHELMES	DATE 23-Jan-06				
		REFERENCE EAR #                      AND	APPROVED S. HSIEH	DATE 08-Mar-12	SCALE: 3.0:1.0	SHEET 2 OF 2	DRAWING NO. 82-805
		CONFIGURATION LEVEL: <input type="checkbox"/> <input type="checkbox"/> <input type="checkbox"/>	CAD FILE		DWG SIZE B	REV N	ITEM NO. 82-805 PART NO. 82-805