



Chipsmall Limited consists of a professional team with an average of over 10 year of expertise in the distribution of electronic components. Based in Hongkong, we have already established firm and mutual-benefit business relationships with customers from,Europe,America and south Asia,supplying obsolete and hard-to-find components to meet their specific needs.

With the principle of “Quality Parts,Customers Priority,Honest Operation,and Considerate Service”,our business mainly focus on the distribution of electronic components. Line cards we deal with include Microchip,ALPS,ROHM,Xilinx,Pulse,ON,Everlight and Freescale. Main products comprise IC,Modules,Potentiometer,IC Socket,Relay,Connector.Our parts cover such applications as commercial,industrial, and automotives areas.

We are looking forward to setting up business relationship with you and hope to provide you with the best service and solution. Let us make a better world for our industry!



Contact us

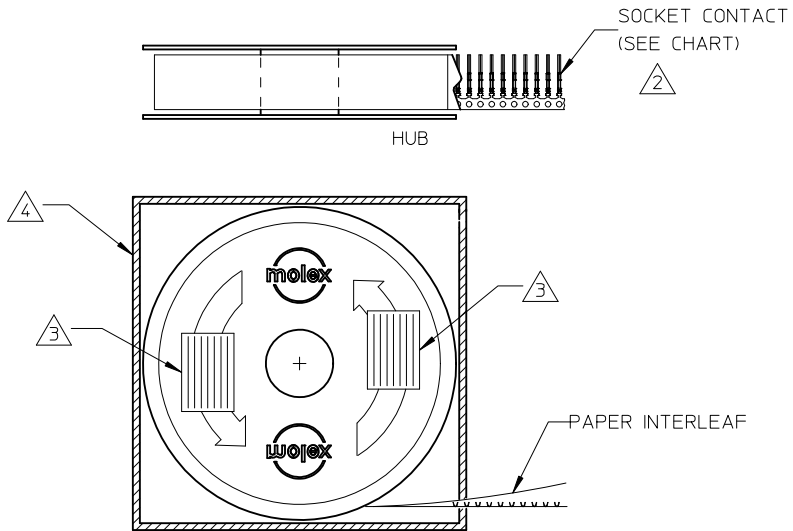
Tel: +86-755-8981 8866 Fax: +86-755-8427 6832

Email & Skype: info@chipsmall.com Web: www.chipsmall.com

Address: A1208, Overseas Decoration Building, #122 Zhenhua RD., Futian, Shenzhen, China



10	9	8	7
MATERIAL NO.	ENGINEERING NO.	DESCRIPTION	PLATING NOTE
830000110	83000-0110	LOOSE PIECE	△6
830009558	83000-9558	2.5K PER REEL	
830009559	83000-9559	50K PER REEL	
830009560	83000-9560	LOOSE PIECE	△7
830009561	83000-9561	2.5K PER REEL	
830009562	83000-9562	50K PER REEL	



SALES DRAWING

1. FOR PLATING SPECIFICATIONS SEE SHEET 2

- △2 CONTACT TO BE ORIENTED AS SHOWN.
- △3 IDENTIFICATION LABELS (2), (REEL).
- △4 IDENTIFICATION LABEL, (SHIPPING BOX).

ENTER DESCRIPTION EC NO: UCE2010-0026 DRWN:SBH CHKD: APPR: JEMURPHY 2009/08/11 2010/05/20	DESCRIPTION REV	QUALITY SYMBOLS ▽=0 ◻=0	GENERAL TOLERANCES (UNLESS SPECIFIED)	DIMENSION STYLE IN/MM	SCALE 10:1	DESIGN UNITS INCH	THIRD ANGLE PROJECTION																														
		<table border="1"> <thead> <tr> <th></th> <th>mm</th> <th>INCH</th> </tr> </thead> <tbody> <tr> <td>4 PLACES</td> <td>± ---</td> <td>± ---</td> </tr> <tr> <td>3 PLACES</td> <td>± ---</td> <td>± .005</td> </tr> <tr> <td>2 PLACES</td> <td>± 0.13</td> <td>± .01</td> </tr> <tr> <td>1 PLACE</td> <td>± 0.25</td> <td>± ---</td> </tr> </tbody> </table>		mm	INCH	4 PLACES	± ---	± ---	3 PLACES	± ---	± .005	2 PLACES	± 0.13	± .01	1 PLACE	± 0.25	± ---	<table border="1"> <thead> <tr> <th>DRAWN BY</th> <th>DATE</th> <th>TITLE</th> </tr> </thead> <tbody> <tr> <td>JLOMASTR</td> <td>04/10/13</td> <td rowspan="4"> CONTACT, PIN CRIMP AND POKE COMMERCIAL MICRO D MOLEX INCORPORATED </td> </tr> <tr> <td>CHECKED BY</td> <td>DATE</td> </tr> <tr> <td>RDEROSS</td> <td>04/10/14</td> </tr> <tr> <td>APPROVED BY</td> <td>DATE</td> </tr> </tbody> </table>	DRAWN BY	DATE	TITLE	JLOMASTR	04/10/13	CONTACT, PIN CRIMP AND POKE COMMERCIAL MICRO D MOLEX INCORPORATED	CHECKED BY	DATE	RDEROSS	04/10/14	APPROVED BY	DATE	<table border="1"> <tr> <td>MATERIAL NO.</td> <td>DOCUMENT NO.</td> <td>SHEET NO.</td> </tr> <tr> <td>SEE CHART</td> <td>SD-83000-006</td> <td>1 OF 2</td> </tr> </table>	MATERIAL NO.	DOCUMENT NO.	SHEET NO.	SEE CHART	SD-83000-006	1 OF 2
			mm	INCH																																	
		4 PLACES	± ---	± ---																																	
3 PLACES	± ---	± .005																																			
2 PLACES	± 0.13	± .01																																			
1 PLACE	± 0.25	± ---																																			
DRAWN BY	DATE	TITLE																																			
JLOMASTR	04/10/13	CONTACT, PIN CRIMP AND POKE COMMERCIAL MICRO D MOLEX INCORPORATED																																			
CHECKED BY	DATE																																				
RDEROSS	04/10/14																																				
APPROVED BY	DATE																																				
MATERIAL NO.	DOCUMENT NO.	SHEET NO.																																			
SEE CHART	SD-83000-006	1 OF 2																																			
DRAFT WHERE APPLICABLE MUST REMAIN WITHIN DIMENSIONS	THIS DRAWING CONTAINS INFORMATION THAT IS PROPRIETARY TO MOLEX INCORPORATED AND SHOULD NOT BE USED WITHOUT WRITTEN PERMISSION																																				

MATERIAL NO.	ENGINEERING NO.	DESCRIPTION	PLATING NOTE
830000110	83000-0110	LOOSE PIECE	△6
830009558	83000-9558	2.5K PER REEL	
830009559	83000-9559	50K PER REEL	
830009560	83000-9560	LOOSE PIECE	△7
830009561	83000-9561	2.5K PER REEL	
830009562	83000-9562	50K PER REEL	

7 MATERIAL: BeCu, ALLOY C17200, .005(0.127) THICK
 CONDITION: 1/2 HARD PER QQ-C-533
 FINISH: GOLD/NICKEL/TIN.
 NICKEL PLATING ALL OVER - 50u INCH MIN. THICKNESS
 GOLD PLATING OVER NICKEL, 15u INCH MIN. THICKNESS AT AREA 1
 GOLD PLATING OVER NICKEL, 1u INCH MIN. THICKNESS AT AREA 2
 TIN PLATING OVER NICKEL, 100u INCH MIN. THICKNESS AT AREA 3

6 MATERIAL: BeCu, ALLOY C17200, .005(0.127) THICK
 CONDITION: 1/2 HARD PER QQ-C-533
 FINISH: GOLD/NICKEL/TIN.
 NICKEL PLATING ALL OVER - 50u INCH MIN. THICKNESS
 GOLD PLATING OVER NICKEL, 50u INCH MIN. THICKNESS AT AREA 1
 GOLD PLATING OVER NICKEL, 1u INCH MIN. THICKNESS AT AREA 2
 TIN PLATING (PER MIL-T-10727) OVER NICKEL,
 100u INCH MIN. THICKNESS AT AREA 3.

5 CONTACT CUTOFF TO BE FLUSH TO BELOW THIS SURFACE

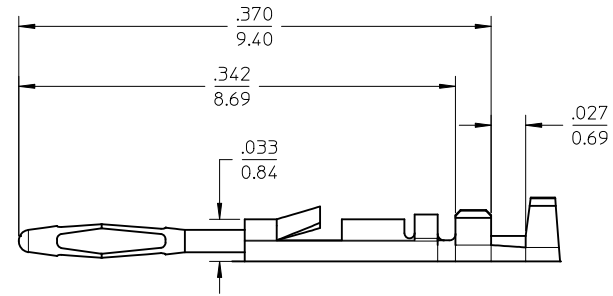
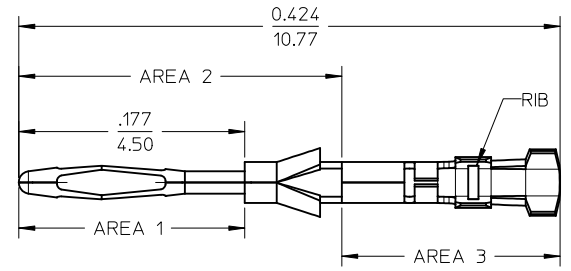
4 WHEN TINES ARE DEFLECTED TO .033 (0.076) DIA MAX.
 THERE SHALL BE NO PERMANENT SET, NOR SHALL THE TINES
 STICK IN THE DOWN POSITION.

3 BURRS NOT TO EXCEED .002 (0.05)

2 ALL DIAMETERS TO BE \odot TO WITHIN .002 (0.05)

1 CORNER RADI (INSIDE OR OUTSIDE) UNLESS STATED: .003 (0.076) MAX.

NOTES: UNLESS OTHERWISE SPECIFIED.



ENTER DESCRIPTION EC NO: UCE2010-0026 DRWN:SBH CH'KD: APPR:JFMURPHY 2009/08/11 2010/05/20	QUALITY SYMBOLS	GENERAL TOLERANCES (UNLESS SPECIFIED)	DIMENSION STYLE	SCALE	DESIGN UNITS	THIRD ANGLE PROJECTION
	▼=0 ∇=0	mm INCH 4 PLACES ± --- ± --- 3 PLACES ± --- ± .005 2 PLACES ± 0.13 ± .01 1 PLACE ± 0.25 ± --- ANGULAR ± 1/2°	IN/MM	10:1	INCH	
		DRAFT WHERE APPLICABLE MUST REMAIN WITHIN DIMENSIONS	DRAWN BY	DATE	TITLE	
			JLOMASTR	04/10/13	CONTACT, PIN CRIMP AND POKE COMMERCIAL MICRO D	
			CHECKED BY	DATE		
			RDEROSS	04/10/14		
			APPROVED BY	DATE		
			RDEROSS	04/10/15		
			MATERIAL NO.	DOCUMENT NO.		
			SEE CHART		MOLEX INCORPORATED	
					SD-83000-006	
			SIZE	THIS DRAWING CONTAINS INFORMATION THAT IS PROPRIETARY TO MOLEX INCORPORATED AND SHOULD NOT BE USED WITHOUT WRITTEN PERMISSION		SHEET NO.
			A3			2 OF 2