



Chipsmall Limited consists of a professional team with an average of over 10 year of expertise in the distribution of electronic components. Based in Hongkong, we have already established firm and mutual-benefit business relationships with customers from,Europe,America and south Asia,supplying obsolete and hard-to-find components to meet their specific needs.

With the principle of “Quality Parts,Customers Priority,Honest Operation,and Considerate Service”,our business mainly focus on the distribution of electronic components. Line cards we deal with include Microchip,ALPS,ROHM,Xilinx,Pulse,ON,Everlight and Freescale. Main products comprise IC,Modules,Potentiometer,IC Socket,Relay,Connector.Our parts cover such applications as commercial,industrial, and automotives areas.

We are looking forward to setting up business relationship with you and hope to provide you with the best service and solution. Let us make a better world for our industry!



## Contact us

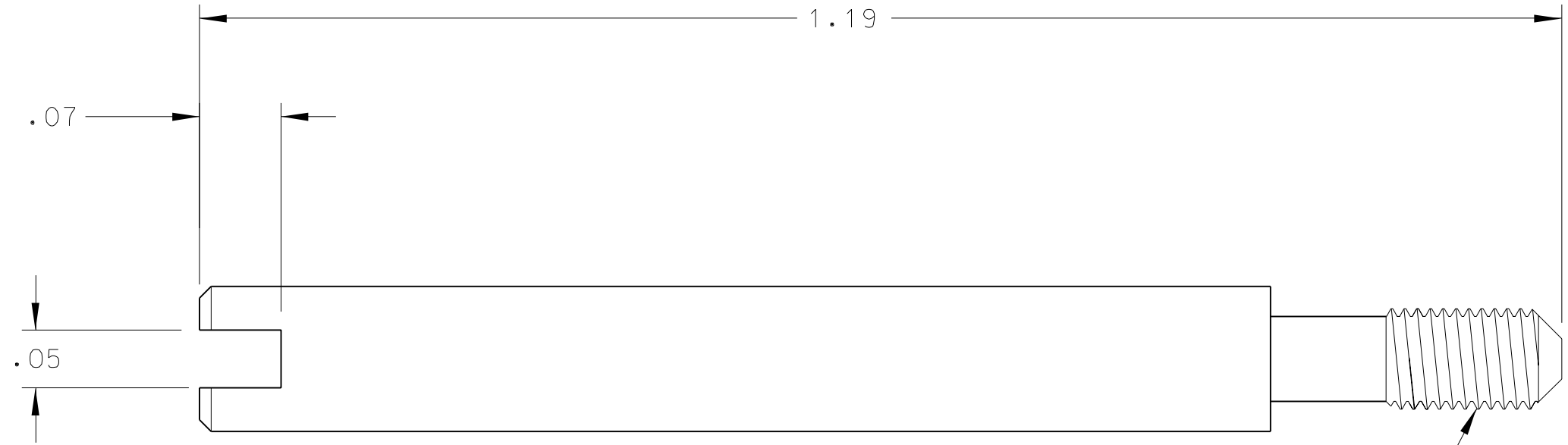
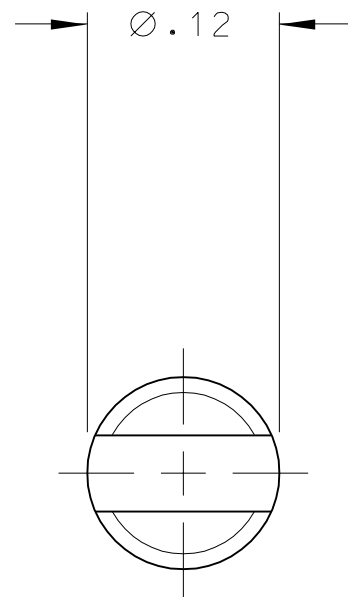
Tel: +86-755-8981 8866 Fax: +86-755-8427 6832

Email & Skype: info@chipsmall.com Web: www.chipsmall.com

Address: A1208, Overseas Decoration Building, #122 Zhenhua RD., Futian, Shenzhen, China



REV	DATE	ECN NO.	APPVD BY	REL BY
B	22FEB00	UM2000-0452		



.086-56 UNC-2A  
THREAD

1. MATERIAL: CRES 303, ASTM-A582, PASSIVATE PER QQ-P-35.

NOTES: UNLESS OTHERWISE SPECIFIED.

<b>QUALITY SYMBOLS</b> MAJOR = 0 CRITICAL = 0 SPC = 0	UNLESS SPECIFIED: ALL DIMENSIONS IN INCHES GENERAL TOLERANCES: 3 PLACES ± .005 2 PLACES ± .010 ANGULAR ± 2°	SCALE 8 : 1 DWG SIZE B	THIRD ANGLE PROJECTION	REVISE ON CAD ONLY
	DRAWN BY & DATE D.URBACH 25FEB00	TITLE: 2-56 JACKSCREW, ROUND SLOTTED, SPECIAL		
	CHECKED BY & DATE	MOLEX INCORPORATED Orange, CA 92868		
	APPROVED BY & DATE	PART NO. 830410062	DRAWING NO. SD-83041-0062	SHEET NO. 1 OF 1
Uti-Mate CAGE CODE 58967		THIS DRAWING CONTAINS INFORMATION THAT IS PROPRIETARY TO MOLEX INCORPORATED AND SHOULD NOT BE USED WITHOUT WRITTEN PERMISSION.		
				REV B