



Chipsmall Limited consists of a professional team with an average of over 10 year of expertise in the distribution of electronic components. Based in Hongkong, we have already established firm and mutual-benefit business relationships with customers from,Europe,America and south Asia,supplying obsolete and hard-to-find components to meet their specific needs.

With the principle of “Quality Parts,Customers Priority,Honest Operation,and Considerate Service”,our business mainly focus on the distribution of electronic components. Line cards we deal with include Microchip,ALPS,ROHM,Xilinx,Pulse,ON,Everlight and Freescale. Main products comprise IC,Modules,Potentiometer,IC Socket,Relay,Connector.Our parts cover such applications as commercial,industrial, and automotives areas.

We are looking forward to setting up business relationship with you and hope to provide you with the best service and solution. Let us make a better world for our industry!



## Contact us

Tel: +86-755-8981 8866 Fax: +86-755-8427 6832

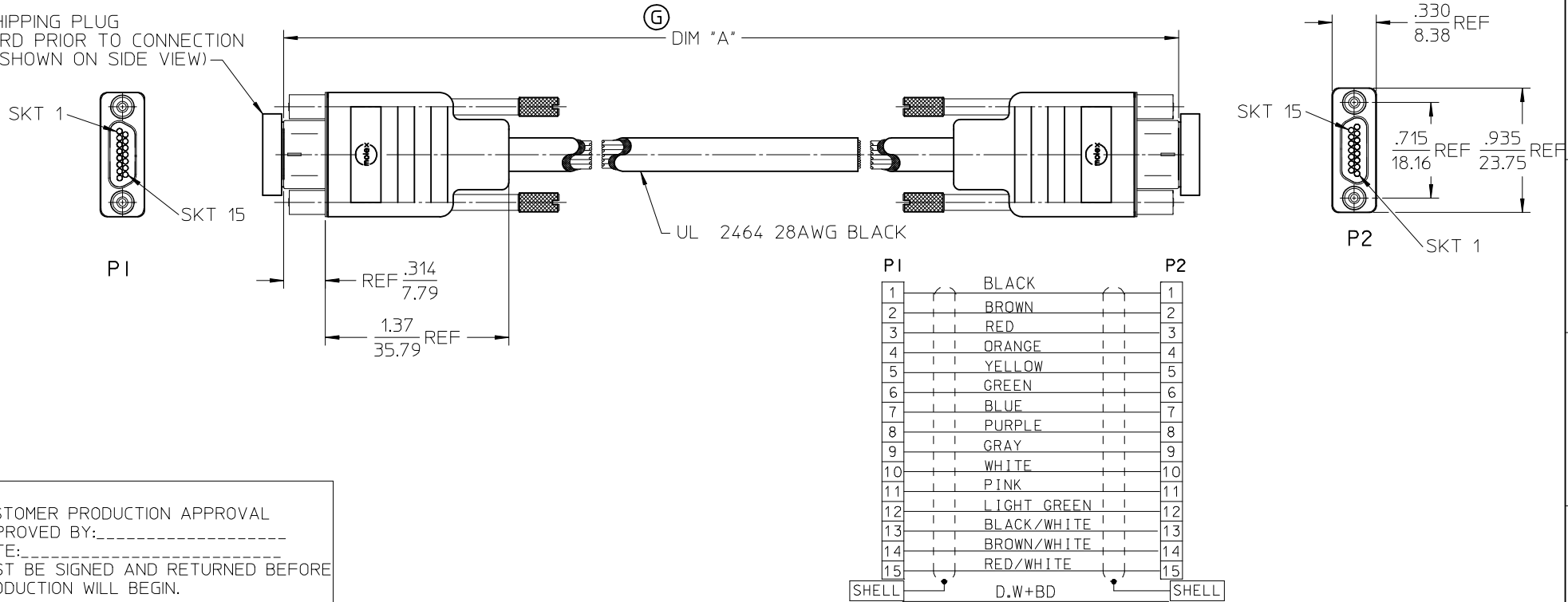
Email & Skype: info@chipsmall.com Web: www.chipsmall.com

Address: A1208, Overseas Decoration Building, #122 Zhenhua RD., Futian, Shenzhen, China



MATERIAL NO.	ENGINEERING NO.	DIM 'A' INCH	DIM 'A' MM
834229052	83422-9052	8.00+.59/-0.00	203+15/-00
834229053	83422-9053	18.00+.39/-0.39	457+10/-10
834229054	83422-9054	36.00+.75/-0.59	914+20/-00
834229055	83422-9055	72.00+1.50/-0.00	1829+40/-00
834229065	83422-9065	98.43+1.50/-0.00	2500+40/-00
834229072	83422-9072	60.00+1.50/-0.00	1524+40/-00

2X SHIPPING PLUG  
DISCARD PRIOR TO CONNECTION  
(NOT SHOWN ON SIDE VIEW)



CUSTOMER PRODUCTION APPROVAL  
APPROVED BY: \_\_\_\_\_  
DATE: \_\_\_\_\_  
MUST BE SIGNED AND RETURNED BEFORE  
PRODUCTION WILL BEGIN.

SALES DRAWING

NOTES:

- 1) REFER TO PS-83421-001 FOR PRODUCT SPEC.
- 2) RoHS COMPLIANT

<b>CHG DIM'A' LOCATION</b> EC NO: IFC2014-0962 DRW: BRUPERT 2013/11/25 CHKD: APPR: BWOODMAN 2013/12/06 REV DESCRIPTION	QUALITY SYMBOLS ▽=0 ▽=0	GENERAL TOLERANCES (UNLESS SPECIFIED) mm INCH 4 PLACES ± --- ± --- 3 PLACES ± --- ± --- 2 PLACES ± --- ± --- 1 PLACE ± --- ± --- ANGULAR ±1/2°	DIMENSION STYLE IN/MM DRAWN BY DATE JLOMASTR 04/09/23 CHECKED BY DATE RDEROSS 04/09/23 APPROVED BY DATE RDEROSS 04/09/29	SCALE DESIGN UNITS INCH THIRD ANGLE PROJECTION	COMMERCIAL MICRO D 15 SOCKET / 15 SOCKET CABLE ASSEMBLY MOLEX INCORPORATED
	DRAFT WHERE APPLICABLE MUST REMAIN WITHIN DIMENSIONS		MATERIAL NO. SEE CHART	DOCUMENT NO. SD-83422-005	SHEET NO. 1 OF 1
	THIS DRAWING CONTAINS INFORMATION THAT IS PROPRIETARY TO MOLEX INCORPORATED AND SHOULD NOT BE USED WITHOUT WRITTEN PERMISSION				
	THIS DRAWING CONTAINS INFORMATION THAT IS PROPRIETARY TO MOLEX INCORPORATED AND SHOULD NOT BE USED WITHOUT WRITTEN PERMISSION				