



Chipsmall Limited consists of a professional team with an average of over 10 year of expertise in the distribution of electronic components. Based in Hongkong, we have already established firm and mutual-benefit business relationships with customers from,Europe,America and south Asia,supplying obsolete and hard-to-find components to meet their specific needs.

With the principle of “Quality Parts,Customers Priority,Honest Operation,and Considerate Service”,our business mainly focus on the distribution of electronic components. Line cards we deal with include Microchip,ALPS,ROHM,Xilinx,Pulse,ON,Everlight and Freescale. Main products comprise IC,Modules,Potentiometer,IC Socket,Relay,Connector.Our parts cover such applications as commercial,industrial, and automotives areas.

We are looking forward to setting up business relationship with you and hope to provide you with the best service and solution. Let us make a better world for our industry!



Contact us

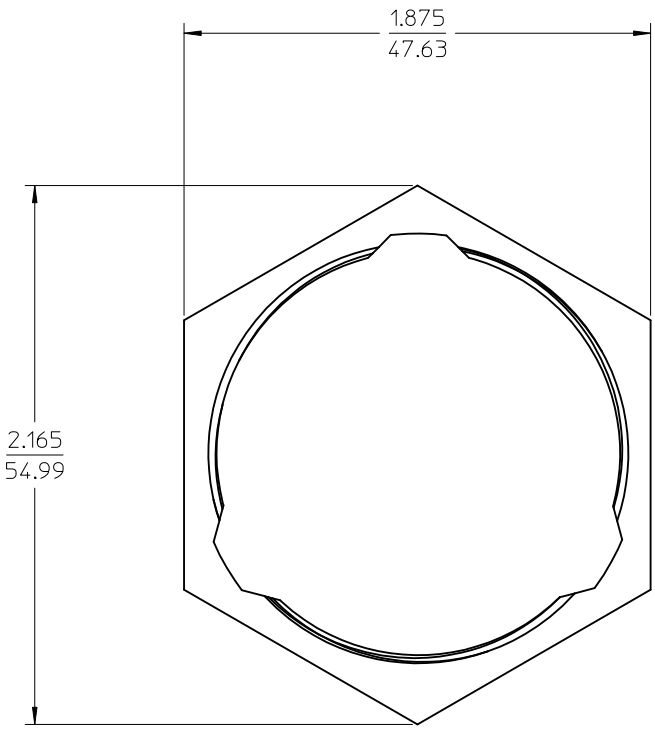
Tel: +86-755-8981 8866 Fax: +86-755-8427 6832

Email & Skype: info@chipsmall.com Web: www.chipsmall.com

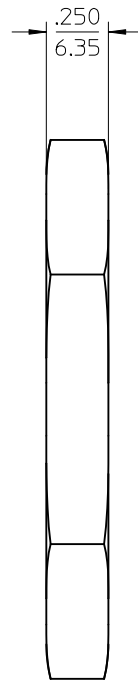
Address: A1208, Overseas Decoration Building, #122 Zhenhua RD., Futian, Shenzhen, China



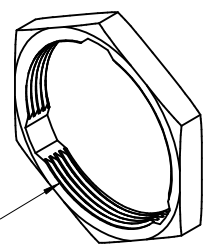
10 9 8 7 6 5 4 3 2 1



SCALE 2:1



SCALE 2:1



1.6875 - 18 UNEF-2B THREAD

ISOVIEW
SCALE 1:1

NOTE(S):

1. MATERIAL: POLYESTER (PBT)
COLOR: BLACK
UL FLAMMABILITY RATING: UL94 V-0
2. USE WITH MOLEX XRC RECEPTACLE CONNECTORS
SERIES 84506 AND 84511.
3. RECOMMENDED TORQUE: 65-75 IN-LB (7.3-8.5 N-M)
4. MATERIAL IS ROHS COMPLIANT.

ADD TORQUE EC NO: IPC2013-0642 DRW:WLEUNG 2012/10/30 CHK:DITLUS 2013/02/15 APPR:DITLUS 2013/02/19	DESCRIPTION B	QUALITY SYMBOLS	GENERAL TOLERANCES (UNLESS SPECIFIED)		DIMENSION STYLE		SCALE	DESIGN UNITS	THIRD ANGLE PROJECTION	
		$\nabla = 0$ $\nabla = 0$ $\nabla = 0$	mm	INCH	IN/MM		1:1	INCH		
		4 PLACES ± --- ± --- 3 PLACES ± --- ± .015 2 PLACES ± 0.38 ± --- 1 PLACE ± --- ± --- 0 PLACE ± --- ± ---	DRAWN BY DATE WLEUNG 2008/12/16		CHECKED BY DATE WLEUNG 2008/12/16		TITLE PANEL HEX NUT, PIN OR SOCKET RECEPTACLE 24 SHELL			
		ANGULAR ± 2 ° DRAFT WHERE APPLICABLE MUST REMAIN WITHIN DIMENSIONS		MATERIAL NO. 845060012		DOCUMENT NO. SD-84506-012		SHEET NO. 1 OF 1		

THIS DRAWING CONTAINS INFORMATION THAT IS PROPRIETARY TO MOLEX INCORPORATED AND SHOULD NOT BE USED WITHOUT WRITTEN PERMISSION

9 8 7 6 5 4 3 2 1