



Chipsmall Limited consists of a professional team with an average of over 10 year of expertise in the distribution of electronic components. Based in Hongkong, we have already established firm and mutual-benefit business relationships with customers from,Europe,America and south Asia,supplying obsolete and hard-to-find components to meet their specific needs.

With the principle of “Quality Parts,Customers Priority,Honest Operation,and Considerate Service”,our business mainly focus on the distribution of electronic components. Line cards we deal with include Microchip,ALPS,ROHM,Xilinx,Pulse,ON,Everlight and Freescale. Main products comprise IC,Modules,Potentiometer,IC Socket,Relay,Connector.Our parts cover such applications as commercial,industrial, and automotives areas.

We are looking forward to setting up business relationship with you and hope to provide you with the best service and solution. Let us make a better world for our industry!



Contact us

Tel: +86-755-8981 8866 Fax: +86-755-8427 6832

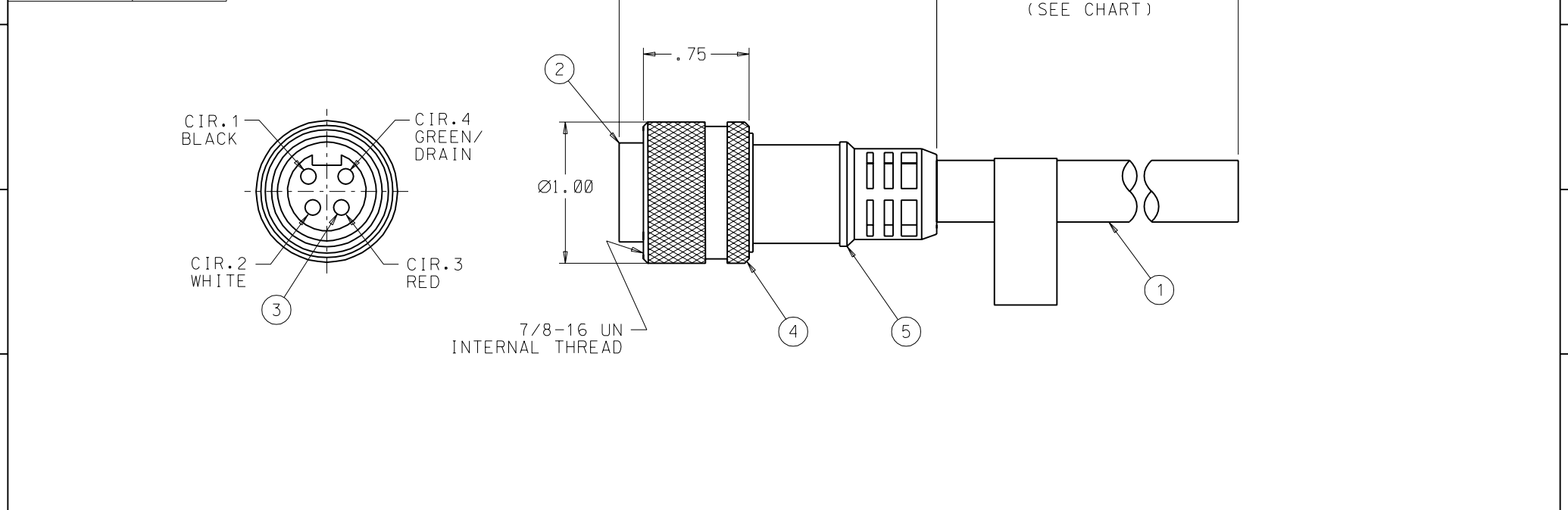
Email & Skype: info@chipsmall.com Web: www.chipsmall.com

Address: A1208, Overseas Decoration Building, #122 Zhenhua RD., Futian, Shenzhen, China



PART NO.	LENGTH
849140303	2M
849140304	5M
849140305	10M
849140323	4M
849140324	8M

REV	DATE	ECN NO.	APPVD BY	REL BY
A	2-25-00	UM2000-0454 PROD. REL.	FVW	
B	8-24-00	UM2001-0054		



5	1	MOLDED BODY	PVC/COLOR:GRAY
4	1	COUPLING RING, INT. THD.	STAINLESS STEEL
3	4	CONTACT, PIN	COPPER ALLOY/TIN PLATED
2	1	INSERT, PIN	PVC/COLOR:GRAY
1	SEE CHART	CABLE, 4/C, 16 AWG.	PUR JACKET/COLOR: GRAY
ITEM QTY		DESCRIPTION	MATERIAL/FINISH

P1	
1	BLK
2	WHT
3	RED
4	GRN
	DRAIN

WIRING DIAGRAM

QUALITY SYMBOLS

MAJOR =

CRITICAL =

SPC =

UNLESS SPECIFIED:

ALL DIMENSIONS IN INCHES

GENERAL TOLERANCES:

3 PLACE ±.005

2 PLACE ±.01

ANGULAR ±2°

Utili-Mate CAGE CODE

58967

SCALE ---

DWG SIZE B

DRAWN BY & DATE GF 2-25-00

CHECKED BY & DATE SU 2-25-00

APPROVED BY & DATE DW 2-25-00

THIS DRAWING CONTAINS INFORMATION THAT IS PROPRIETARY TO MOLEX INCORPORATED AND SHOULD NOT BE USED WITHOUT WRITTEN PERMISSION.

THIRD ANGLE PROJECTION

REVISE ON CAD ONLY

TITLE: MINI-C, PLUG, MALE, 4 POLE, 16 AWG, PUR, NEC

MOLDEX MOLEX INCORPORATED Orange, CA

PART NO. SEE CHART

DRAWING NO. SD-84914-0303

SHEET NO. 92868

1 OF 1

REV B