



Chipsmall Limited consists of a professional team with an average of over 10 year of expertise in the distribution of electronic components. Based in Hongkong, we have already established firm and mutual-benefit business relationships with customers from,Europe,America and south Asia,supplying obsolete and hard-to-find components to meet their specific needs.

With the principle of “Quality Parts,Customers Priority,Honest Operation,and Considerate Service”,our business mainly focus on the distribution of electronic components. Line cards we deal with include Microchip,ALPS,ROHM,Xilinx,Pulse,ON,Everlight and Freescale. Main products comprise IC,Modules,Potentiometer,IC Socket,Relay,Connector.Our parts cover such applications as commercial,industrial, and automotives areas.

We are looking forward to setting up business relationship with you and hope to provide you with the best service and solution. Let us make a better world for our industry!



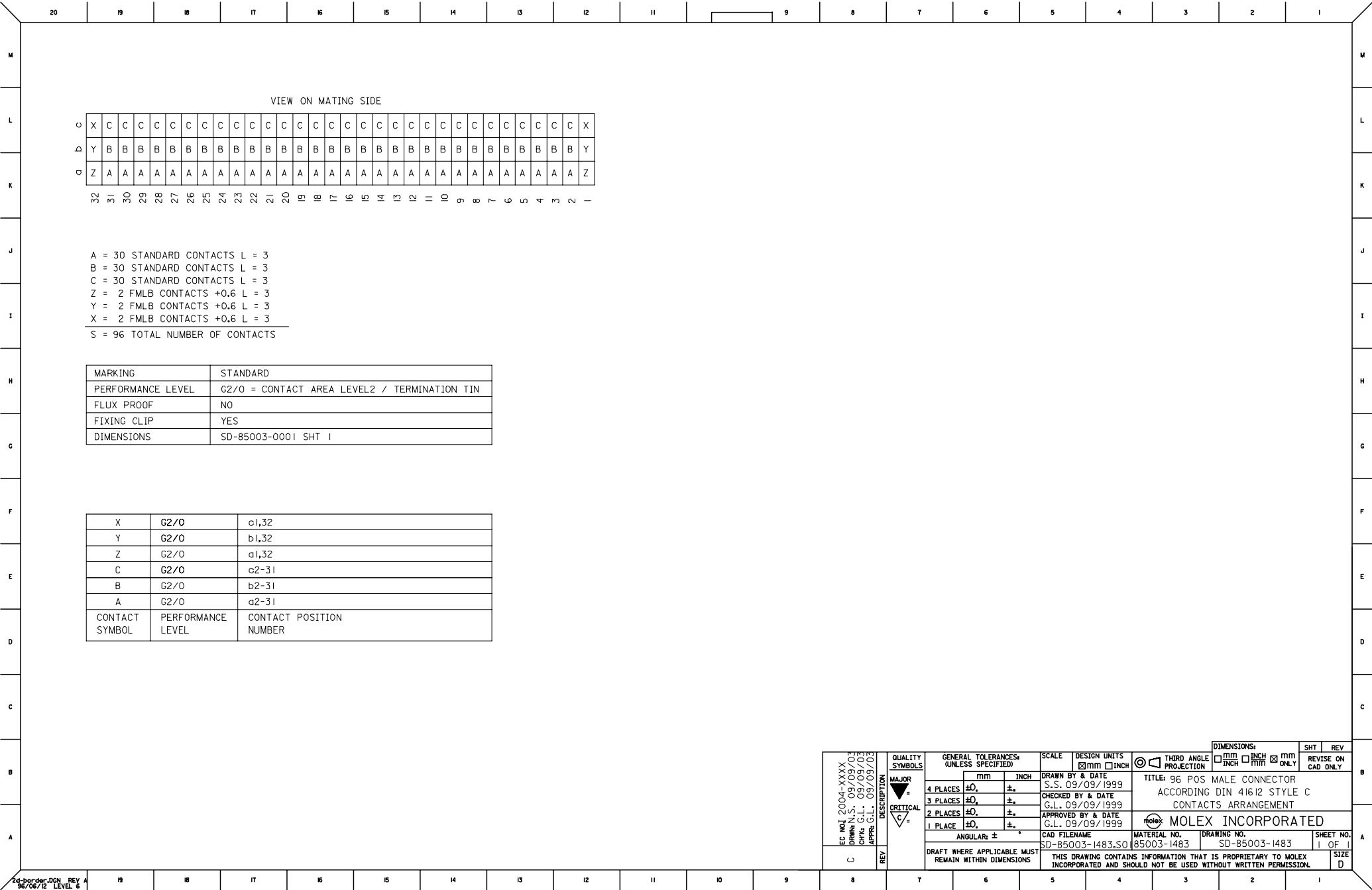
Contact us

Tel: +86-755-8981 8866 Fax: +86-755-8427 6832

Email & Skype: info@chipsmall.com Web: www.chipsmall.com

Address: A1208, Overseas Decoration Building, #122 Zhenhua RD., Futian, Shenzhen, China





EC NO1 2004-XXXX
DRAWN: S. 09/09/03
CHK: G.L. 09/09/03
APPR: G.L. 09/09/03

QUALITY SYMBOLS
MAJOR
CRITICAL

DESCRIPTION
REV

GENERAL TOLERANCES: (UNLESS SPECIFIED)
4 PLACES ±0.1 ±
3 PLACES ±0.1 ±
2 PLACES ±0.1 ±
1 PLACE ±0.1 ±
ANGULAR ± ±
DRAFT WHERE APPLICABLE MUST REMAIN WITHIN DIMENSIONS

SCALE
DESIGN UNITS
DRAWN BY & DATE
CHECKED BY & DATE
APPROVED BY & DATE
CAD FILENAME
SD-85003-1483.S01

DIMENSIONS:
THIRD ANGLE PROJECTION
TITLE: 96 POS MALE CONNECTOR
ACCORDING DIN 41612 STYLE C
CONTACTS ARRANGEMENT
MOLEX INCORPORATED
MATERIAL NO.
SD-85003-1483
DRAWING NO.
SD-85003-1483

SHT 1 REV
REVISE ON CAD ONLY
SHEET NO.
1 OF 1
SIZE
D