



Chipsmall Limited consists of a professional team with an average of over 10 year of expertise in the distribution of electronic components. Based in Hongkong, we have already established firm and mutual-benefit business relationships with customers from,Europe,America and south Asia,supplying obsolete and hard-to-find components to meet their specific needs.

With the principle of “Quality Parts,Customers Priority,Honest Operation,and Considerate Service”,our business mainly focus on the distribution of electronic components. Line cards we deal with include Microchip,ALPS,ROHM,Xilinx,Pulse,ON,Everlight and Freescale. Main products comprise IC,Modules,Potentiometer,IC Socket,Relay,Connector.Our parts cover such applications as commercial,industrial, and automotives areas.

We are looking forward to setting up business relationship with you and hope to provide you with the best service and solution. Let us make a better world for our industry!



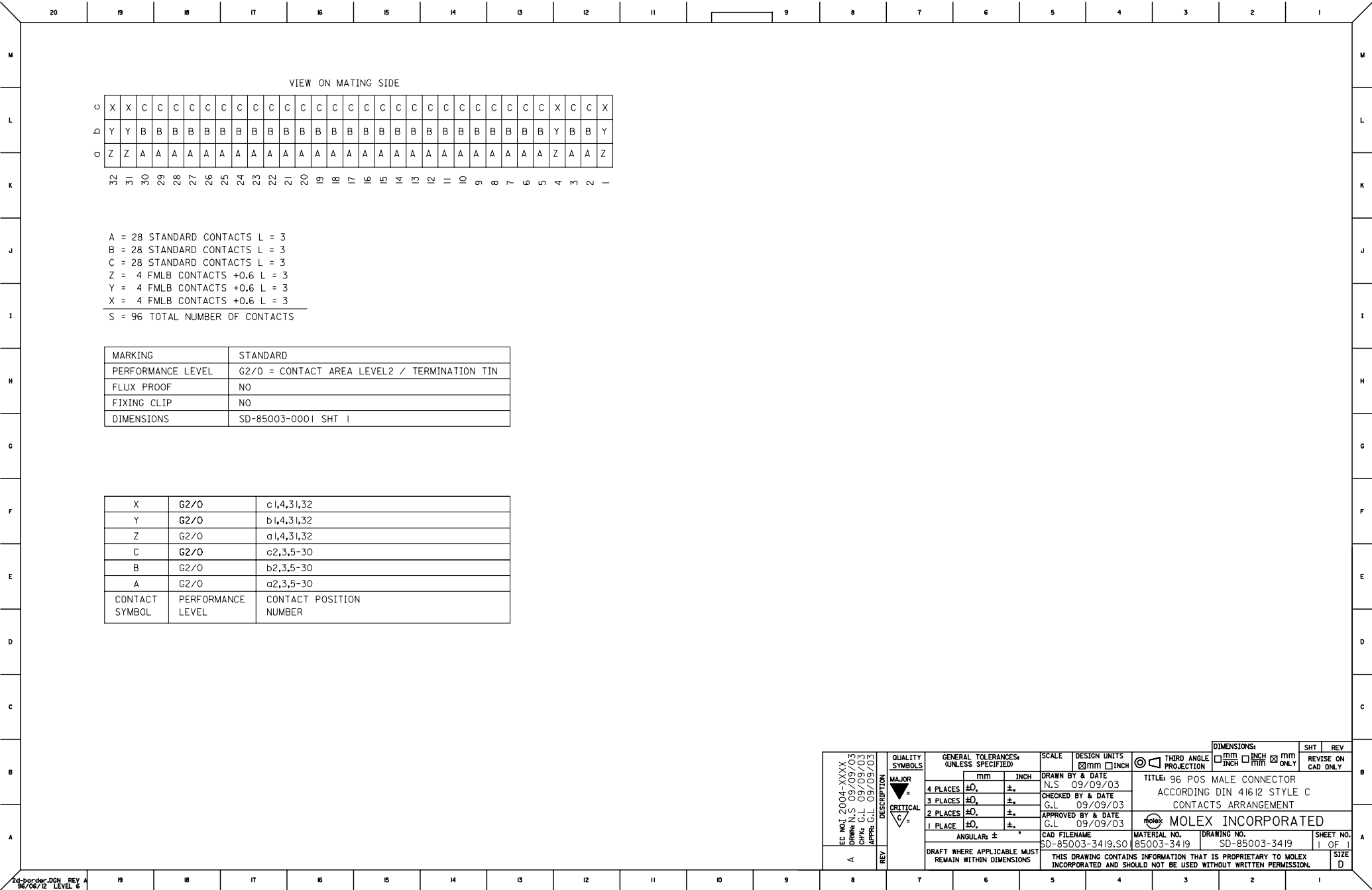
Contact us

Tel: +86-755-8981 8866 Fax: +86-755-8427 6832

Email & Skype: info@chipsmall.com Web: www.chipsmall.com

Address: A1208, Overseas Decoration Building, #122 Zhenhua RD., Futian, Shenzhen, China





VIEW ON MATING SIDE

O	X	X	C	C	C	C	C	C	C	C	C	C	C	C	C	C	C	C	C	C	C	C	C	C	C	C	C	C	C	X	C	C	X
D	Y	Y	B	B	B	B	B	B	B	B	B	B	B	B	B	B	B	B	B	B	B	B	B	B	B	B	B	Y	B	B	Y		
Q	Z	Z	A	A	A	A	A	A	A	A	A	A	A	A	A	A	A	A	A	A	A	A	A	A	A	A	A	Z	A	A	Z		
	32	31	30	29	28	27	26	25	24	23	22	21	20	19	18	17	16	15	14	13	12	11	10	9	8	7	6	5	4	3	2	1	

A = 28 STANDARD CONTACTS L = 3
B = 28 STANDARD CONTACTS L = 3
C = 28 STANDARD CONTACTS L = 3
Z = 4 FMLB CONTACTS +0.6 L = 3
Y = 4 FMLB CONTACTS +0.6 L = 3
X = 4 FMLB CONTACTS +0.6 L = 3
S = 96 TOTAL NUMBER OF CONTACTS

MARKING	STANDARD
PERFORMANCE LEVEL	G2/O = CONTACT AREA LEVEL2 / TERMINATION TIN
FLUX PROOF	NO
FIXING CLIP	NO
DIMENSIONS	SD-85003-0001 SHT 1

X	G2/O	c1,4,31,32
Y	G2/O	b1,4,31,32
Z	G2/O	a1,4,31,32
C	G2/O	c2,3,5-30
B	G2/O	b2,3,5-30
A	G2/O	a2,3,5-30
CONTACT SYMBOL	PERFORMANCE LEVEL	CONTACT POSITION NUMBER

EC NO: 2004-XXXX DRAWN: N.S. 09/09/03 CHK'd: G.L. 09/09/03 APPR: G.L. 09/09/03	QUALITY SYMBOLS MAJOR CRITICAL	GENERAL TOLERANCES* (UNLESS SPECIFIED)		SCALE	DESIGN UNITS <input checked="" type="checkbox"/> mm <input type="checkbox"/> INCH	THIRD ANGLE PROJECTION <input checked="" type="checkbox"/> THIRD ANGLE PROJECTION	TITLE: 96 POS MALE CONNECTOR ACCORDING DIN 41612 STYLE C CONTACTS ARRANGEMENT	DIMENSIONS: <input type="checkbox"/> mm <input type="checkbox"/> INCH <input checked="" type="checkbox"/> mm ONLY	SHT 1 REV		
		4 PLACES ± 0.1 mm ± 0.1 mm	3 PLACES ± 0.1 mm ± 0.1 mm	2 PLACES ± 0.1 mm ± 0.1 mm	1 PLACE ± 0.1 mm ± 0.1 mm						
		DRAWN BY & DATE N.S. 09/09/03		CHECKED BY & DATE G.L. 09/09/03						APPROVED BY & DATE G.L. 09/09/03	
		CAD FILENAME SD-85003-3419.S01		MATERIAL NO. 85003-3419						DRAWING NO. SD-85003-3419	
A	REV	DRAFT WHERE APPLICABLE MUST REMAIN WITHIN DIMENSIONS		THIS DRAWING CONTAINS INFORMATION THAT IS PROPRIETARY TO MOLEX INCORPORATED AND SHOULD NOT BE USED WITHOUT WRITTEN PERMISSION.					SHEET NO. 1 OF 1		