



Chipsmall Limited consists of a professional team with an average of over 10 year of expertise in the distribution of electronic components. Based in Hongkong, we have already established firm and mutual-benefit business relationships with customers from,Europe,America and south Asia,supplying obsolete and hard-to-find components to meet their specific needs.

With the principle of “Quality Parts,Customers Priority,Honest Operation,and Considerate Service”,our business mainly focus on the distribution of electronic components. Line cards we deal with include Microchip,ALPS,ROHM,Xilinx,Pulse,ON,Everlight and Freescale. Main products comprise IC,Modules,Potentiometer,IC Socket,Relay,Connector.Our parts cover such applications as commercial,industrial, and automotives areas.

We are looking forward to setting up business relationship with you and hope to provide you with the best service and solution. Let us make a better world for our industry!



Contact us

Tel: +86-755-8981 8866 Fax: +86-755-8427 6832

Email & Skype: info@chipsmall.com Web: www.chipsmall.com

Address: A1208, Overseas Decoration Building, #122 Zhenhua RD., Futian, Shenzhen, China



20 19 18 17 16 15 14 13 12 11 9 8 7 6 5 4 3 2 1

VIEW ON MATING SIDE

⊙	A	A	A	A	A	A	A	A	A	A	A	A	A	A	A	A	A	A	A	A	A	A	A	A	A	A	A	A	A	A	A	A	A	A	A	A	A	A	
⊙	A	A	A	A	A	A	A	A	A	A	A	A	A	A	A	A	A	A	A	A	A	A	A	A	A	A	A	A	A	A	A	A	A	A	A	A	A	A	A
⊙	A	A	A	A	A	A	A	A	A	A	A	A	A	A	A	A	A	A	A	A	A	A	A	A	A	A	A	A	A	A	A	A	A	A	A	A	A	A	A
	-	2	3	4	5	6	7	8	9	10	11	12	13	14	15	16	17	18	19	20	21	22	23	24	25	26	27	28	29	30	31	32							

A = 96 STANDARD CONTACTS L = 2.9

MARKING	STANDARD
PERFORMANCE LEVEL	G2/0 = CONTACT AREA LEVEL2 / TERMINATION TIN
FLUX PROOF	NO
FIXING CLIP	NO
DIMENSIONS	SD-85013-0001 SHT 1

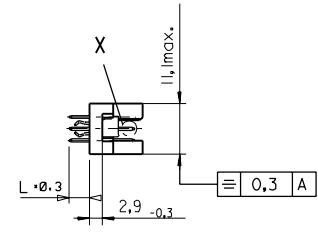
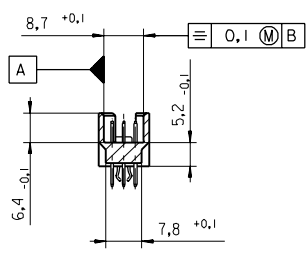
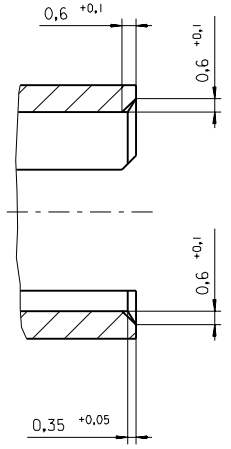
A	G2/0	a1-32 b1-32 c1-32
CONTACT SYMBOL	PERFORMANCE LEVEL	CONTACT POSITION NUMBER

EC NO. I 2004-XXXX DRAWN N.S. 31/03/04 CHKD G.L. 31/03/04 APPR. G.L. 31/03/04	QUALITY SYMBOLS	GENERAL TOLERANCES: (UNLESS SPECIFIED)	SCALE	DESIGN UNITS <input type="checkbox"/> MM <input type="checkbox"/> INCH	DIMENSIONS: <input type="checkbox"/> MM INCH <input type="checkbox"/> INCH MM <input checked="" type="checkbox"/> MM ONLY	SHT REV
	MAJOR					REVISE ON CAD ONLY
	CRITICAL					
DESCRIPTION	4 PLACES ±0. ±.		DRAWN BY & DATE N.S. 23/04/01	THIRD ANGLE PROJECTION		TITLE: 96 POS MALE CONNECTOR ACCORDING DIN 41612 STYLE R CONTACTS ARRANGEMENT
	3 PLACES ±0. ±.		CHECKED BY & DATE G.L. 23/04/01			
	2 PLACES ±0. ±.		APPROVED BY & DATE G.L. 23/04/01			
	1 PLACE ±0. ±.		CAD FILENAME S850130048.S01	MATERIAL NO. 85013-0048	DRAWING NO. SD-85013-0048	SHEET NO. 1 OF 1
DRAFT WHERE APPLICABLE MUST REMAIN WITHIN DIMENSIONS		THIS DRAWING CONTAINS INFORMATION THAT IS PROPRIETARY TO MOLEX INCORPORATED AND SHOULD NOT BE USED WITHOUT WRITTEN PERMISSION.				
B	REV					SIZE D

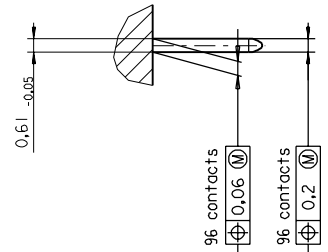
24-border.DGN REV 4 19 18 17 16 15 14 13 12 11 10 9 8 7 6 5 4 3 2 1 96/06/12 LEVEL 6

PART NO.
DWG. NO.

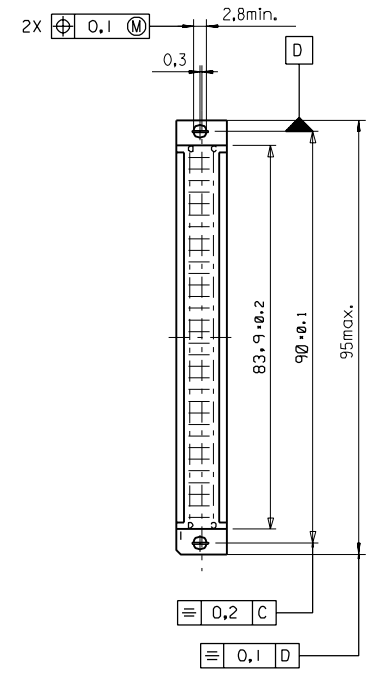
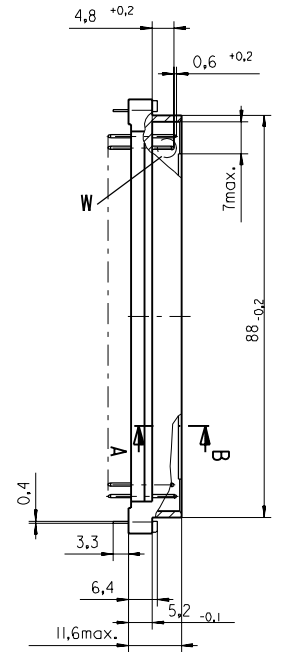
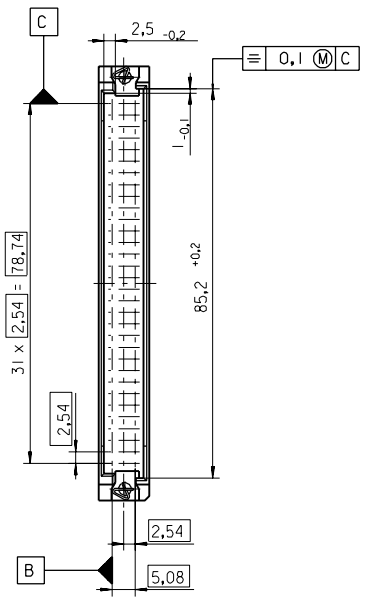
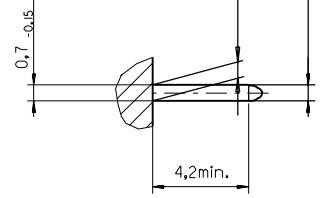
Section A - B
5:1



View X
5:1



View W
5:1

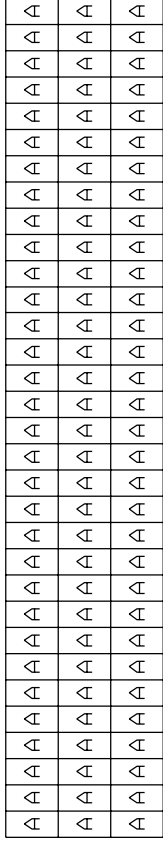


FIRST ANGLE PROJECTION		REVISE ONLY ON CAD SYSTEM		SH.	REV.
UNLESS OTHERWISE SPECIFIED TOLERANCES: ANGULAR $\pm 2^\circ$ INCH METRIC	DRWG BY	SIGN	CAD/CAM PROJECT NAME 85013000 611		
	3 PLACE \pm . \pm 2 PLACE \pm . \pm 1 PLACE \pm . \pm	Ca		THIS DRAWING CONTAINS INFORMATION THAT IS PROPRIETARY TO MOLEX INC. & SHOULD NOT BE USED WITHOUT WRITTEN PERMISSION	
DRAFT WHERE APPLICABLE MUST REMAIN WITHIN DIMENSIONS		CHK'D BY	TITLE 96 pos. Male connector acc. DIN 41612 Style R Dimensions		
DESIGN DIMENSION <input checked="" type="checkbox"/> MM <input type="checkbox"/> IN.		APP'D BY	SHEET NO. DATE 1 OF 95/06/07		
EQUIVALENT DIMENSION <input type="checkbox"/> MM <input type="checkbox"/> IN.		SCALE	MOLEX MOLEX EUROPE		
IF TWO DIMENSIONS ARE SHOWN THE UPPER IS THE DESIGN DIMENSION, LOWER IS SECONDARY		! : 1	PART NO. DWG NO. SIZE SDA-85013-0001 B		

first release
see ECN No. 1887

LTR REVISIONS
FOR PREVIOUS REVISIONS SEE MRI LIST

VIEW ON MATING SIDE



A - 96 STANDARD CONTACTS L=2,9

Marking	Standard
Performance level	G2/0 = Contact area perform. level2 / Termination tin
Flux proof	no
Fixing clip	no
Dimensions	SDA-85013-0001 sht.1
Technical Data	PS-85013-0001

A	G2/0	a1-32	b1-32	c1-32
Contact symbol	Perform. level	Contact position number		

first release see ECN No. 1868	REVISIONS	FOR PREVIOUS REVISIONS SEE MRI LIST		
		DRWG BY Cc	SIGN	SH. REV.
LTR	REVISIONS	UNLESS OTHERWISE SPECIFIED TOLERANCES: ANGULAR ± 2° INCH METRIC	CHK'D BY KN	THIS DRAWING CONTAINS INFORMATION THAT IS PROPRIETARY TO MOLEX INC. & SHOULD NOT BE USED WITHOUT WRITTEN PERMISSION
		3 PLACE ± . ± 2 PLACE ± . ± 1 PLACE ± . ±	SIGN	CAD/CAM PROJECT NAME s8501300 s41
		DRAFT WHERE APPLICABLE MUST REMAIN WITHIN DIMENSIONS		TITLE
		DESIGN DIMENSION <input type="checkbox"/> MM <input type="checkbox"/> IN.	APPD BY	96 pos. Male connector acc. DIN 41612 style R contacts arrangement
		EQUIVALENT DIMENSION <input type="checkbox"/> MM <input type="checkbox"/> IN.	SCALE	molex MOLEX EUROPE
		IF TWO DIMENSIONS ARE SHOWN, THE UPPER IS THE DESIGN DIMENSION, LOWER IS SECONDARY		SHEET NO. DATE 1 OF 1 95/06/07
		PART NO. DWG NO. SDA-85013-0048		SIZE A