



Chipsmall Limited consists of a professional team with an average of over 10 year of expertise in the distribution of electronic components. Based in Hongkong, we have already established firm and mutual-benefit business relationships with customers from,Europe,America and south Asia,supplying obsolete and hard-to-find components to meet their specific needs.

With the principle of “Quality Parts,Customers Priority,Honest Operation,and Considerate Service”,our business mainly focus on the distribution of electronic components. Line cards we deal with include Microchip,ALPS,ROHM,Xilinx,Pulse,ON,Everlight and Freescale. Main products comprise IC,Modules,Potentiometer,IC Socket,Relay,Connector.Our parts cover such applications as commercial,industrial, and automotives areas.

We are looking forward to setting up business relationship with you and hope to provide you with the best service and solution. Let us make a better world for our industry!



Contact us

Tel: +86-755-8981 8866 Fax: +86-755-8427 6832

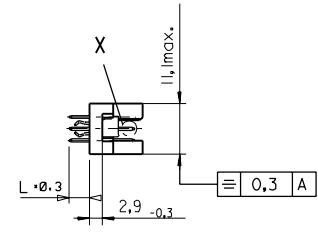
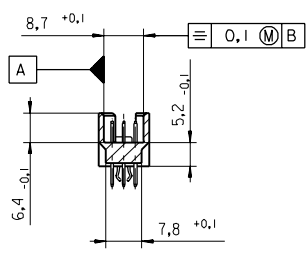
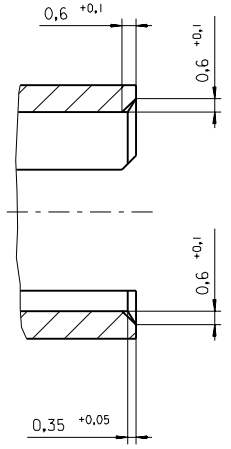
Email & Skype: info@chipsmall.com Web: www.chipsmall.com

Address: A1208, Overseas Decoration Building, #122 Zhenhua RD., Futian, Shenzhen, China

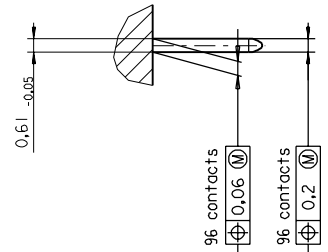


PART NO.
DWG. NO.

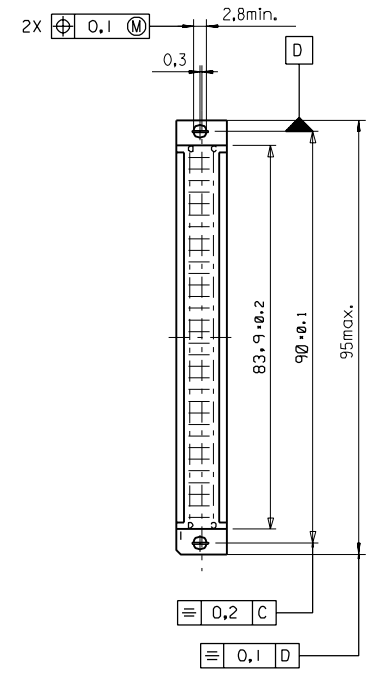
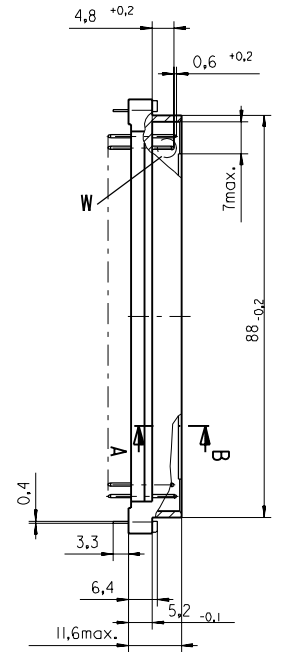
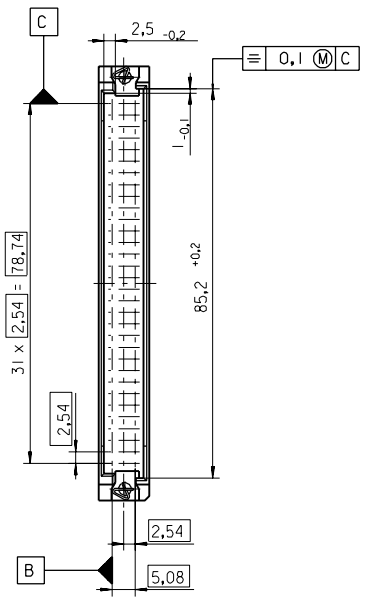
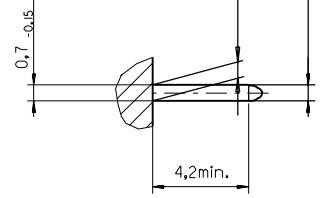
Section A - B
5:1



View X
5:1



View W
5:1



FIRST ANGLE PROJECTION		REVISE ONLY ON CAD SYSTEM		SH.	REV.
UNLESS OTHERWISE SPECIFIED TOLERANCES: ANGULAR ±2° INCH METRIC	DRWG BY	SIGN	CAD/CAM PROJECT NAME	THIS DRAWING CONTAINS INFORMATION THAT IS PROPRIETARY TO MOLEX INC. & SHOULD NOT BE USED WITHOUT WRITTEN PERMISSION	
	Ca		85013000 611		
3 PLACE ± . ±	CHK'D BY	SIGN	TITLE		
2 PLACE ± . ±	KN		96 pos. Male connector acc. DIN 41612 Style R Dimensions		
1 PLACE ± . ±	APP'D BY	SIGN	MOLEX EUROPE		
DRAFT WHERE APPLICABLE MUST REMAIN WITHIN DIMENSIONS	SCALE		SHEET NO. DATE		
DESIGN DIMENSION <input checked="" type="checkbox"/> MM <input type="checkbox"/> IN.	: 1		1 OF 95/06/07		
EQUIVALENT DIMENSION <input type="checkbox"/> MM <input type="checkbox"/> IN.		PART NO.		DWG NO.	SIZE
IF TWO DIMENSIONS ARE SHOWN THE UPPER IS THE DESIGN DIMENSION, LOWER IS SECONDARY			SDA-85013-0001		B

VIEW ON MATING SIDE

∩	A	A	A	A	A	A	A	A	A	A	A	A	A	A	A	A	A	A	A	A
∩	A	A	A	A	A	A	A	A	A	A	A	A	A	A	A	A	A	A	A	A
∩	A	A	A	A	A	A	A	A	A	A	A	A	A	A	A	A	A	A	A	A

1 2 3 4 5 6 7 8 9 10 11 12 13 14 15 16 17 18 19 20 21 22 23 24 25 26 27 28 29 30 31 32

A = 96 STANDARD CONTACTS L=4,5

Marking	Standard
Performance level	G1/0 = Contact area perform. level / Termination tin
Flux proof	no
Fixing clip	no
Dimensions	SDA-85013-0001 sht.1
Technical Data	PS-85013-0001

A	G1/0	a1-32	b1-32	c1-32
Contact symbol	Perform. level	Contact position number		

first release see ECN No. 1868	REVISIONS			REVISIONS	FOR PREVIOUS REVISIONS SEE MRI LIST		
	LTR Δ	INCH ± . ± . ± . DRAFT WHERE APPLICABLE MUST REMAIN WITHIN DIMENSIONS	DRWG BY Ca	SIGN SIGN SIGN	CAD/CAM PROJECT NAME s8501304 s31	REVISE ONLY ON CAD SYSTEM	SH. REV.
	3 PLACE ± . 2 PLACE ± . 1 PLACE ± . DESIGN DIMENSION <input type="checkbox"/> MM <input type="checkbox"/> IN. EQUIVALENT DIMENSION <input type="checkbox"/> MM <input type="checkbox"/> IN. <small>IF TWO DIMENSIONS ARE SHOWN, THE UPPER IS THE DESIGN DIMENSION, LOWER IS SECONDARY</small>	SCALE	APP'D BY	TITLE 96 pos. Male connector acc. DIN 41612 style R contacts arrangement	SHEET NO. 1 OF 1	DATE 95/06/07	SIZE A


MOLEX EUROPE
 PART NO. **85013-0438**
 DWG NO. **SDA-85013-0438**