



Chipsmall Limited consists of a professional team with an average of over 10 year of expertise in the distribution of electronic components. Based in Hongkong, we have already established firm and mutual-benefit business relationships with customers from,Europe,America and south Asia,supplying obsolete and hard-to-find components to meet their specific needs.

With the principle of "Quality Parts,Customers Priority,Honest Operation,and Considerate Service",our business mainly focus on the distribution of electronic components. Line cards we deal with include Microchip,ALPS,ROHM,Xilinx,Pulse,ON,Everlight and Freescale. Main products comprise IC,Modules,Potentiometer,IC Socket,Relay,Connector.Our parts cover such applications as commercial,industrial, and automotives areas.

We are looking forward to setting up business relationship with you and hope to provide you with the best service and solution. Let us make a better world for our industry!



Contact us

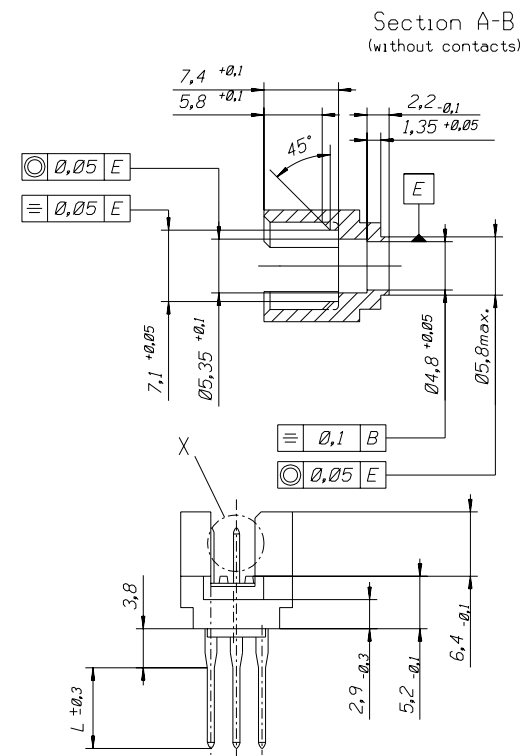
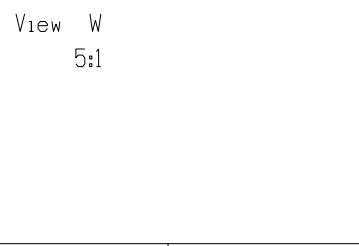
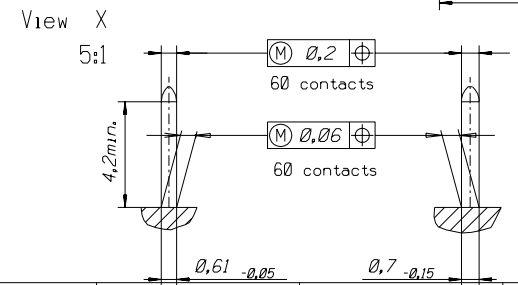
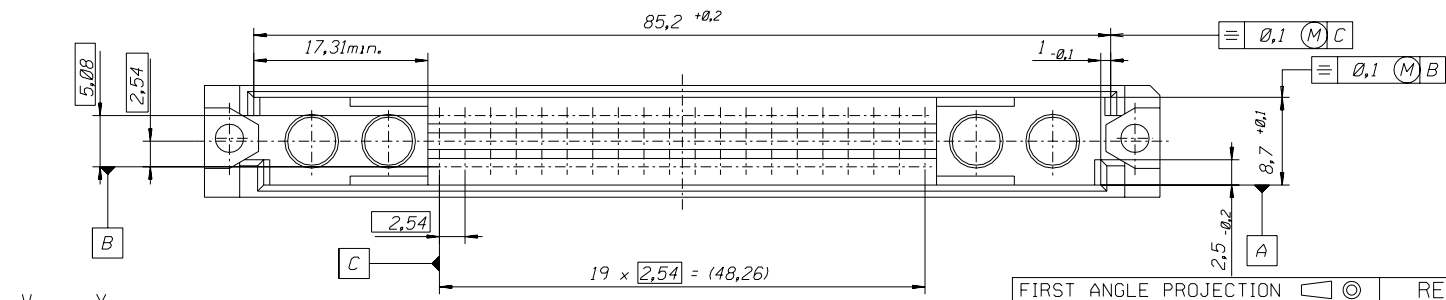
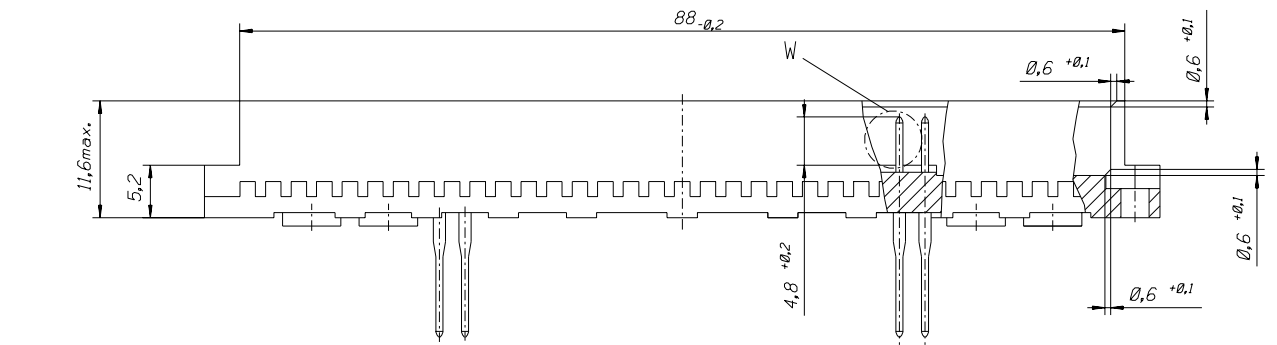
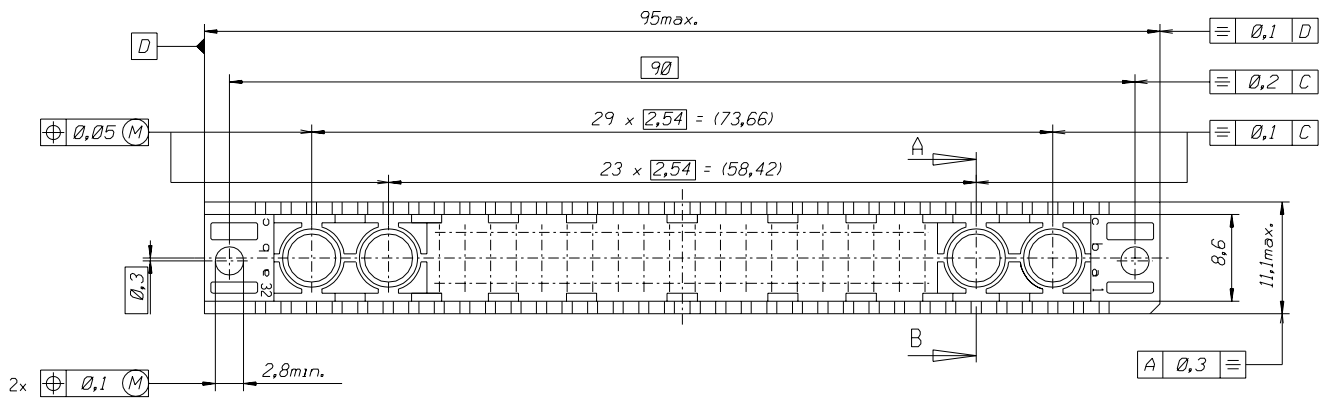
Tel: +86-755-8981 8866 Fax: +86-755-8427 6832

Email & Skype: info@chipsmall.com Web: www.chipsmall.com

Address: A1208, Overseas Decoration Building, #122 Zhenhua RD., Futian, Shenzhen, China

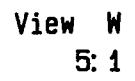
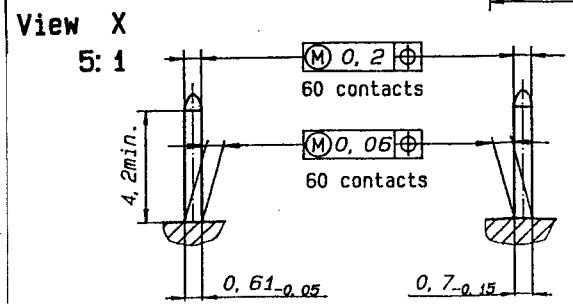
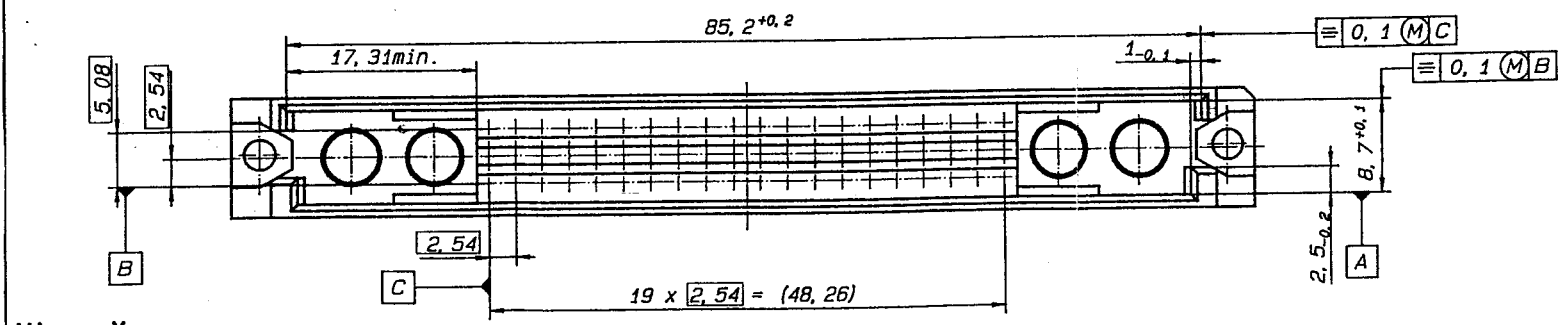
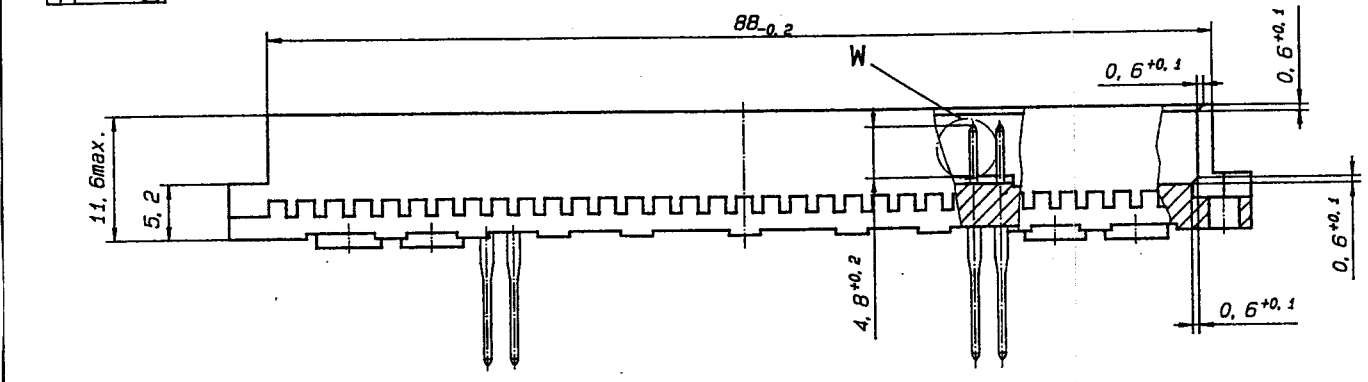
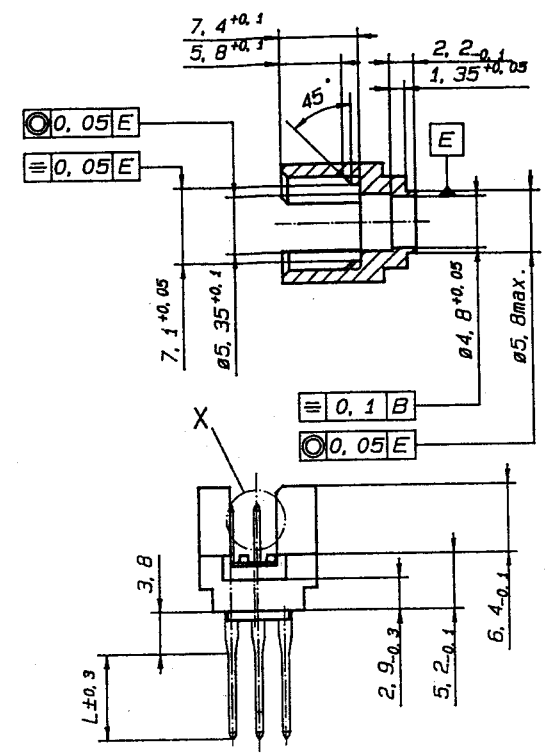
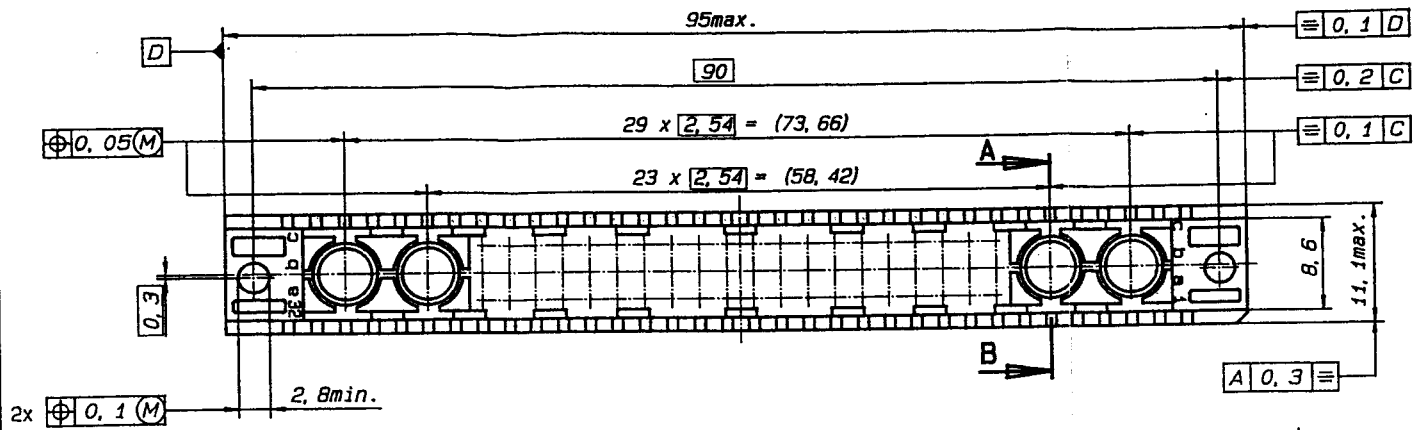


PART NO.
DWG. NO.



FIRST ANGLE PROJECTION		REVISE ONLY ON CAD SYSTEM		SH.	REV.
REVISIONS FOR PREVIOUS REVISIONS SEE INR LIST	UNLESS OTHERWISE SPECIFIED TOLERANCES: ANGULAR ±2°	DRWG BY	CAD/CAM PROJECT NAME		
	INCH METRIC	Ca	60393231		
	3 PLACE ± . ±	CHK'D BY	THIS DRAWING CONTAINS INFORMATION THAT IS PROPRIETARY TO MOLEX INC. & SHOULD NOT BE USED WITHOUT WRITTEN PERMISSION		
	2 PLACE ± . ±	KN	TITLE		
1 PLACE ± . ±	APP'D BY	60 pos. Male connector DIN 41612 style M (C-Pin) inverted / Dimensions			
DRAFT WHERE APPLICABLE MUST REMAIN WITHIN DIMENSIONS		SCALE	SHEET NO. DATE		
DESIGN DIMENSION <input type="checkbox"/> MM	<input type="checkbox"/> IN.	2:1	1 OF 3 95/05/23		
EQUIVALENT DIMENSION <input type="checkbox"/> MM	<input type="checkbox"/> IN.		MOLEX EUROPE		
IF TWO DIMENSIONS ARE SHOWN THE UPPER IS THE DESIGN DIMENSION, LOWER IS SECONDARY		PART NO.	DWG NO.	SIZE	
		see sh. no. 2 of 3	603-6093-23	B	

Section A-B
(without contacts)



NO RELEASE
 REFERENCE
 USE ONLY

RoHS COMPLIANT

EC NO: 12006-0679 2006/06/06 DRINKSHANKAR 2006/06/06 CHIKKOSUDHIR 2006/06/06 APPR:SSUDHIR	QUALITY SYMBOLS	GENERAL TOLERANCES (UNLESS SPECIFIED)	DIMENSION STYLE	SCALE	DESIGN UNITS	THIRD ANGLE PROJECTION
	0 0	mm INCH 4 PLACES ± ± 3 PLACES ±0.05 ± ± 2 PLACES ±0.1 ± ± 1 PLACE ±0.15 ± ± ANGULAR ± 2°	MM ONLY	NTS	METRIC	DRAWN BY SHANKAR DATE 2006/06/06 CHECKED BY SSUDHIR DATE 2006/06/06 APPROVED BY SSUDHIR DATE 2006/06/06
MATERIAL NO. SEE SHEET 2 DRAFT WHERE APPLICABLE MUST REMAIN WITHIN DIMENSIONS		DOCUMENT NO. SD-85017-003		MOLEX MOLEX INCORPORATED		SHEET NO. 1 OF 3

60P-6093-0731-9	85017-0282	no	2	----- 2	1, 2, 3...20	a+b+c
60P-6093-0731-7	85017-0294	no	2	Wire wrap 13, 3	1, 2, 3...20	a+b+c
60P-6093-0731-6	85017-0268	no	2	Wire wrap 16, 4	1, 2, 3...20	a+b+c
60P-6093-072V-9	85017-0115	yes	2	----- 2	1, 2, 3...20	a+b+c
60P-6093-072V-8	85017-0103	yes	2	Wire wrap 9, 4	1, 2, 3...20	a+b+c
60P-6093-072V-7	85017-0098	yes	2	Wire wrap 13, 3	1, 2, 3...20	a+b+c
60P-6093-072V-6	85017-0086	yes	2	Wire wrap 16, 4	1, 2, 3...20	a+b+c
60P-6093-0722-9	85017-0024	no	1	----- 2	1, 2, 3...20	a+b+c
Engineering number	Ordering code	Molex std.	Perform. level hard gold acc. MIL-645204	Termination / L	Contact sequence / row	

RoHS COMPLIANT



EC NO: 12006-0679 DRWNSHANKAR 2006/06/06 CHKDSSUDHIR 2006/06/06 APPR.SSUDHIR 2006/06/06 A	QUALITY SYMBOLS ▼=0 ▽=0	GENERAL TOLERANCES (UNLESS SPECIFIED)		DIMENSION STYLE MM ONLY	SCALE NTS	DESIGN UNITS METRIC	<input type="checkbox"/> THIRD ANGLE PROJECTION	
		4 PLACES ±	mm	INCH	DRAWN BY SHANKAR	DATE 2006/06/06	TITLE ASSY DIN 41612 STYLE M INVERTED, 60 POS MALE C-PIN, CONNECTOR	
		3 PLACES ±	±	±	CHECKED BY SSUDHIR	DATE 2006/06/06	<input type="checkbox"/> Molex MOLEX INCORPORATED	
		2 PLACES ±	±	±	APPROVED BY SSUDHIR	DATE 2006/06/06	DOCUMENT NO. SD-85017-003	SHEET NO. 2 OF 3
DRAFT WHERE APPLICABLE MUST REMAIN WITHIN DIMENSIONS		SEE CHART		THIS DRAWING CONTAINS INFORMATION THAT IS PROPRIETARY TO MOLEX INCORPORATED AND SHOULD NOT BE USED WITHOUT WRITTEN PERMISSION				

- 1. General : Technical Data
60pos. Male connector acc.DIN 41612 style M inverted (C-Pin)
- 2. Material :
 - 2.1 Moulding material : Thermoplastic Polyester GV30 grey RAL 7032
 - 2.1.1 Moulding material
burning properties acc. to UL94 V0
 - 2.1.2 Resistance against
solvents : good
 - 2.2 Pin contact : CuSn
 - 2.2.1 Contact plating : Performance level I or II (Test acc.DIN 41612 part.5)
- 3. Printing : Part.No., date of manufacturing



RoHS COMPLIANT

EC NO: 12006-0679 DRAWN BY: SHANKAR CHECKED BY: SSUDHIR APPROVED BY: SSUDHIR	7006/06/06 7006/06/06 7006/06/06	DESCRIPTION	DUALITY SYMBOLS ▽=0 ▽-0	GENERAL TOLERANCES (UNLESS SPECIFIED)		DIMENSION STYLE MM ONLY		SCALE	DESIGN UNITS	THIRD ANGLE PROJECTION
				m/m	INCH	NTS	METRIC	⊙		
4 PLACES ±				±	±	DRAWN BY	DATE	TITLE		
3 PLACES ±				±	±	SHANKAR	2006/06/06	ASSY DIN 41612 STYLE M INVERTED, 60 POS MALE C-PIN, CONNECTOR		
2 PLACES ±				±	±	CHECKED BY	DATE	MOLEX INCORPORATED		
1 PLACE ±				±	±	SSUDHIR	2006/06/06	DOCUMENT NO.		
ANGULAR ± °				±	±	APPROVED BY	DATE	SD-85017-003		
						SSUDHIR	2006/06/06	SHEET NO.		
DRAFT WHERE APPLICABLE MUST REMAIN WITHIN DIMENSIONS				SEE SHEET 2		SIZE		3 OF 3		
THIS DRAWING CONTAINS INFORMATION THAT IS PROPRIETARY TO MOLEX INCORPORATED AND SHOULD NOT BE USED WITHOUT WRITTEN PERMISSION										