



Chipsmall Limited consists of a professional team with an average of over 10 year of expertise in the distribution of electronic components. Based in Hongkong, we have already established firm and mutual-benefit business relationships with customers from,Europe,America and south Asia,supplying obsolete and hard-to-find components to meet their specific needs.

With the principle of "Quality Parts,Customers Priority,Honest Operation,and Considerate Service",our business mainly focus on the distribution of electronic components. Line cards we deal with include Microchip,ALPS,ROHM,Xilinx,Pulse,ON,Everlight and Freescale. Main products comprise IC,Modules,Potentiometer,IC Socket,Relay,Connector.Our parts cover such applications as commercial,industrial, and automotives areas.

We are looking forward to setting up business relationship with you and hope to provide you with the best service and solution. Let us make a better world for our industry!



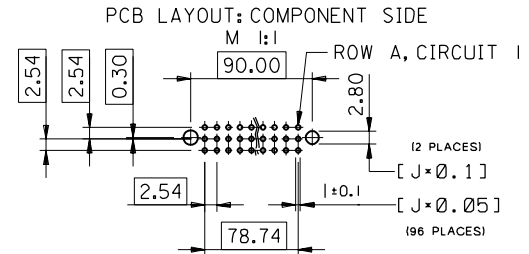
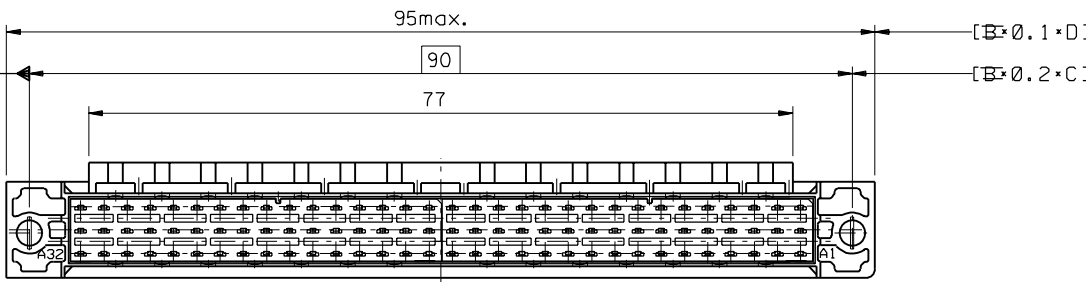
Contact us

Tel: +86-755-8981 8866 Fax: +86-755-8427 6832

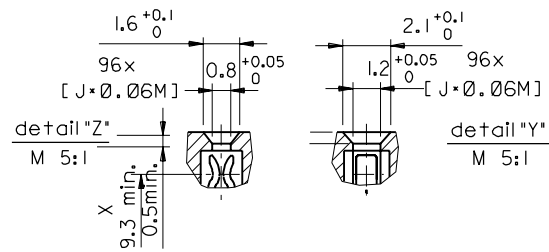
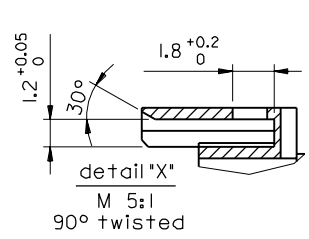
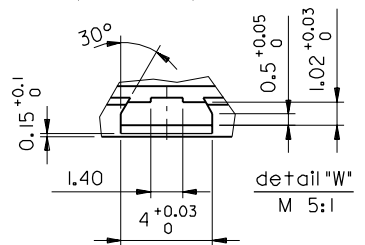
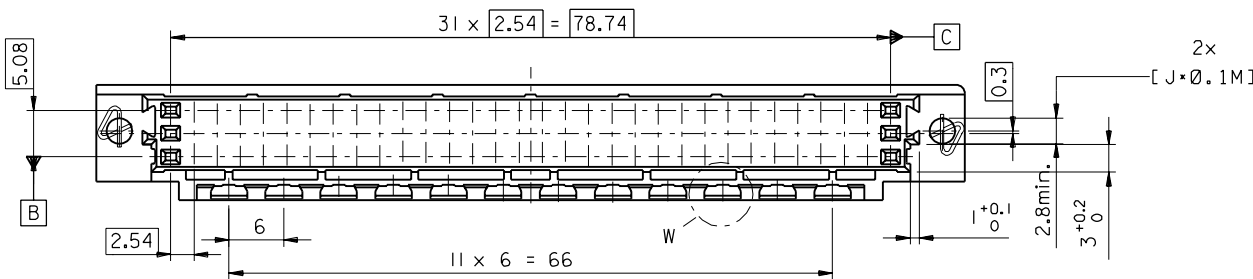
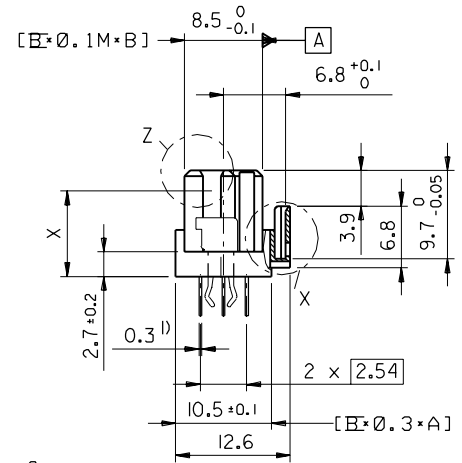
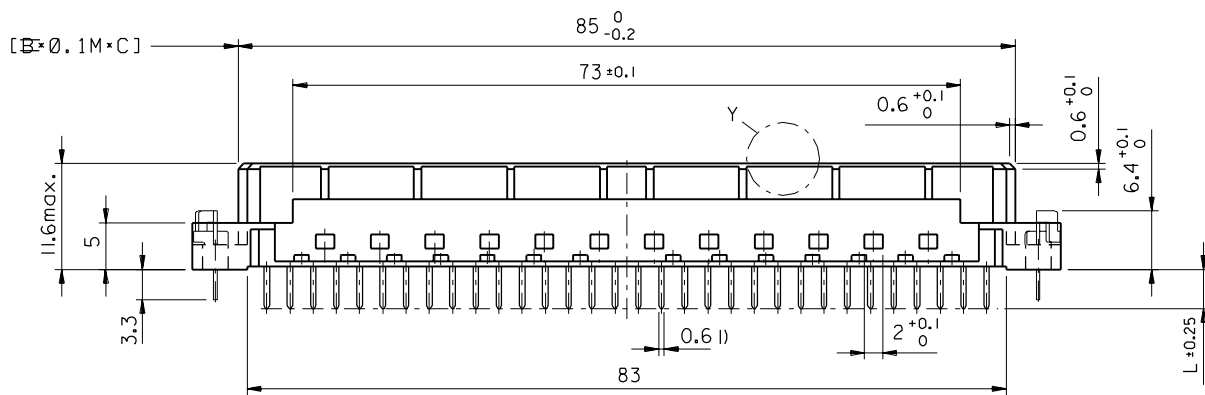
Email & Skype: info@chipsmall.com Web: www.chipsmall.com

Address: A1208, Overseas Decoration Building, #122 Zhenhua RD., Futian, Shenzhen, China





l) tails to fit in PC-board layout



FIRST ANGLE PROJECTION

REVISE ONLY ON CAD SYSTEM

ECN MG1998-2583 Schraube, Lochbild 97-09-17 KN	REVISIONS FOR PREVIOUS REVISIONS SEE MRL LIST	3 PLACE ±	±
		2 PLACE ±	±
		1 PLACE ±	±
	DRAFT WHERE APPLICABLE MUST REMAIN WITHIN DIMENSIONS		
	DESIGN DIMENSION	<input checked="" type="checkbox"/> MM	
		<input type="checkbox"/> IN.	
	EQUIVALENT DIMENSION	<input type="checkbox"/> MM	
		<input type="checkbox"/> IN.	
	IF TWO DIMENSIONS ARE SHOWN THE UPPER IS THE DESIGN DIMENSION, LOWER IS SECONDARY		

DRWG BY KN	SIGN	SCALE 2:1
CHK'D BY Ca	SIGN	
APP'D BY JB	SIGN	

CAD/CAM PROJECT NAME 85042000 s12	THIS DRAWING CONTAINS INFORMATION THAT IS PROPRIETARY TO MOLEX INC. & SHOULD NOT BE USED WITHOUT WRITTEN PERMISSION	SH.	REV.
TITLE 96 pos. female connector DIN 41612 style C, + clip with coding, dimensions		SHEET NO. DATE 2 of 2 96/04/30	
MOLEX MOLEX EUROPE		PART NO. DWG NO. SIZE SDA-85042-0001 B	

VIEW ON MATING SIDE

∪	A	A	A	A	A	A	A	A	A	A	A	A	A	A	A	A	A	A	A	A	A	A
∩																						
◁	A	A	A	A	A	A	A	A	A	A	A	A	A	A	A	A	A	A	A	A	A	A

1 2 3 4 5 6 7 8 9 10 11 12 13 14 15 16 17 18 19 20 21 22 23 24 25 26 27 28 29 30 31 32 33 34

A = 64 STANDARD CONTACTS L=4,5

Marking	Standard
Performance level	G2/0 = Contact area level2 / Termination tin
Flux proof	no
Fixing clip	no
Dimensions	SDA-85042-0001 sht.2
Technical Data	PS-85042-0001

A	G2/0	a1-32	ci-32
Contact symbol	Perform. level	Contact position number	

first release see ECN No. 2154	REVISIONS	FOR PREVIOUS REVISIONS SEE MRI LIST
▷	LTR	

UNLESS OTHERWISE SPECIFIED TOLERANCES: ANGULAR ± 2° INCH METRIC	DRWG BY	CC	SIGN
	CHK'D BY	KN	SIGN
	APP'D BY		SIGN
3 PLACE ± .		±	
2 PLACE ± .		±	
1 PLACE ± .		±	
DRAFT WHERE APPLICABLE MUST REMAIN WITHIN DIMENSIONS			
DESIGN DIMENSION	<input type="checkbox"/> MM	<input type="checkbox"/> IN.	
EQUIVALENT DIMENSION	<input type="checkbox"/> MM	<input type="checkbox"/> IN.	
IF TWO DIMENSIONS ARE SHOWN, THE UPPER IS THE DESIGN DIMENSION, LOWER IS SECONDARY			

CAD/CAM PROJECT NAME s8504201 s81	REVISE ONLY ON CAD SYSTEM	SH. REV.
THIS DRAWING CONTAINS INFORMATION THAT IS PROPRIETARY TO MOLEX INC. & SHOULD NOT BE USED WITHOUT WRITTEN PERMISSION		
TITLE 96 pos. female connector acc. DIN 41612 style C contacts arrangement	SHEET NO. 1 OF 1	DATE 96/05/24
PART NO. 85042-0189		DWG NO. SDA-85042-0189
MOLEX EUROPE		SIZE A