



Chipsmall Limited consists of a professional team with an average of over 10 year of expertise in the distribution of electronic components. Based in Hongkong, we have already established firm and mutual-benefit business relationships with customers from,Europe,America and south Asia,supplying obsolete and hard-to-find components to meet their specific needs.

With the principle of “Quality Parts,Customers Priority,Honest Operation,and Considerate Service”,our business mainly focus on the distribution of electronic components. Line cards we deal with include Microchip,ALPS,ROHM,Xilinx,Pulse,ON,Everlight and Freescale. Main products comprise IC,Modules,Potentiometer,IC Socket,Relay,Connector.Our parts cover such applications as commercial,industrial, and automotives areas.

We are looking forward to setting up business relationship with you and hope to provide you with the best service and solution. Let us make a better world for our industry!



Contact us

Tel: +86-755-8981 8866 Fax: +86-755-8427 6832

Email & Skype: info@chipsmall.com Web: www.chipsmall.com

Address: A1208, Overseas Decoration Building, #122 Zhenhua RD., Futian, Shenzhen, China



VIEW ON MATING SIDE

∩	C	C	C	C	C	C	C	C	C	C	C	C	C	C
∞	B	B	B	B	B	B	B	B	B	B	B	B	B	B
⊂	A	A	A	A	A	A	A	A	A	A	A	A	A	A

∩ ∞ ⊂

- A = 16 CONTACTS L-2,8
- B = 16 CONTACTS L-2,8
- C = 16 CONTACTS L-2,8

S = 48 TOTAL NUMBER OF CONTACTS

Marking	Standard
Performance level	G1/O = Contact area level / Termination fin
Flux proof	no
Fixing clip	no
Dimensions	SDA-85052-0002 sht.1
Technical Data	PS-85052-0001

C	G1/O	c1-l6
B	G1/O	b1-l6
A	G1/O	a1-l6
Contact symbol	Perform. level	Contact position number

ECN 2507 first release	REVISIONS	FOR PREVIOUS REVISIONS SEE MRI LIST
▶	LTR	IF TWO DIMENSIONS ARE SHOWN, THE UPPER IS THE DESIGN DIMENSION, LOWER IS SECONDARY

UNLESS OTHERWISE SPECIFIED TOLERANCES: ANGULAR ± 2°

INCH METRIC

3 PLACE ± .	±
2 PLACE ± .	±
1 PLACE ± .	±

DRAFT WHERE APPLICABLE MUST REMAIN WITHIN DIMENSIONS

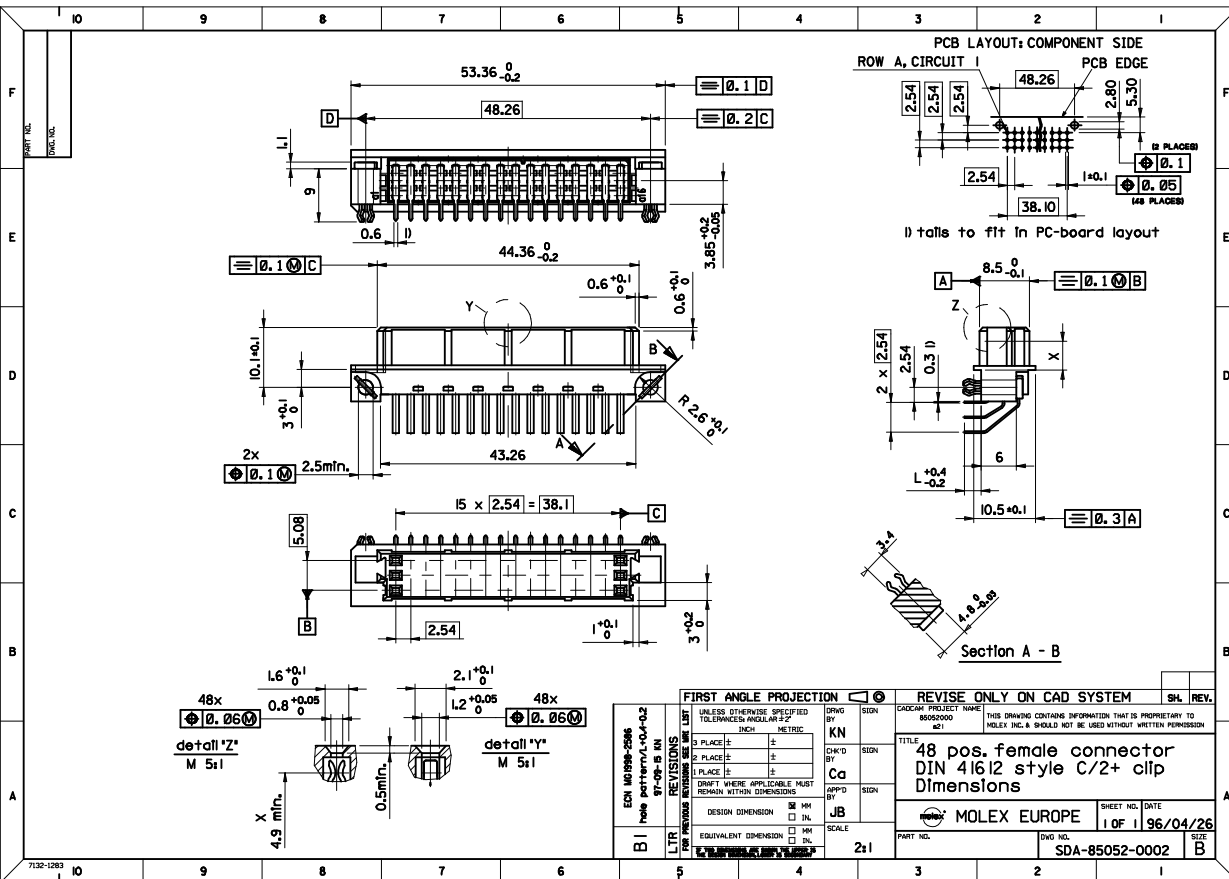
DESIGN DIMENSION MM IN.

EQUIVALENT DIMENSION MM IN.

DRWG BY	KN	SIGN
CHK'D BY	Ca	SIGN
APP'D BY	JB	SIGN
SCALE		

CAD/CAM PROJECT NAME
s8505205
s91

REVISE ONLY ON CAD SYSTEM	SH. REV.
THIS DRAWING CONTAINS INFORMATION THAT IS PROPRIETARY TO MOLEX INC. & SHOULD NOT BE USED WITHOUT WRITTEN PERMISSION	
TITLE	SHEET NO. DATE
48 pos. female connector acc. DIN 41612 style R/2 contacts arrangement	1 OF 1 97/06/16
MOLEX EUROPE	DWG NO. SD-85052-0593
PART NO. 85052-0593	SIZE A



SHT. 1 OF		MRI -			
MODIFICATION RECORD INDEX					
ECN	ISS.	DATE	INIT. SHTS. AFFECTED	DESCRIPTION OF MOD.	
2213	A	96.04.26	KN		first release
2253	AI	96.09.25	KN		Flanschaenderung
2525	B	97.06.27	KN		Toleranz Mass L In +- 0.2
2586	BI	97.09.15	KN		hole pattern, Tol.L +0.4-0.2

MOLEX EUROPE		REVISE ONLY ON CAD SYSTEM	
THIS DRAWING CONTAINS INFORMATION THAT IS PROPRIETARY TO MOLEX INC. & SHOULD NOT BE USED WITHOUT WRITTEN PERMISSION			
CAD/CAM PROJECT NAME	SHEET NO.	DATE	ISSUE
8502000	1 OF 1	96/04/26	B
CAD/CAM FILENAME			
MF0028			

LEVEL CHART

1	17	33	49
2	18	34	50
3	19	35	51 LEVEL INDEX
4	20	36	52 RESERVED
5	21	37	53 RESERVED
6	22	38	54 Inspection Balloons
7	23	39	55 DIMENSIONS
8	24	40	56 TABLES/CHARTS
9	25	41	57 REVISION TEXT & MRI
10	26	42	58 Notes/text - English
11	27	43	59 Bill of materials
12	28	44	60 notes/text - german
13	29	45	61
14	30	46	62 notes/text - french
15	31	47	63 RESERVED
16	32	48	