



Chipsmall Limited consists of a professional team with an average of over 10 year of expertise in the distribution of electronic components. Based in Hongkong, we have already established firm and mutual-benefit business relationships with customers from,Europe,America and south Asia,supplying obsolete and hard-to-find components to meet their specific needs.

With the principle of "Quality Parts,Customers Priority,Honest Operation,and Considerate Service",our business mainly focus on the distribution of electronic components. Line cards we deal with include Microchip,ALPS,ROHM,Xilinx,Pulse,ON,Everlight and Freescale. Main products comprise IC,Modules,Potentiometer,IC Socket,Relay,Connector.Our parts cover such applications as commercial,industrial, and automotives areas.

We are looking forward to setting up business relationship with you and hope to provide you with the best service and solution. Let us make a better world for our industry!



## Contact us

Tel: +86-755-8981 8866 Fax: +86-755-8427 6832

Email & Skype: info@chipsmall.com Web: www.chipsmall.com

Address: A1208, Overseas Decoration Building, #122 Zhenhua RD., Futian, Shenzhen, China





## Vertical SMT Modular Jacks with Polyimide film for vacuum pick-and-place functionality can streamline high-volume PCB production and lower manufacturing costs

Automatic vacuum pick-and-place is the most common high-speed manufacturing process for precision placement of surface mount (SMT) components on printed circuit boards (PCBs) in mass production. The addition of Polyimide film to the surface of vertical SMT modular jacks facilitates automatic vacuum pick-and-place of the connector alongside other SMT components. This streamlines high-volume production and lowers manufacturing costs for customers. For additional information on Molex's complete offering of modular jacks visit: [www.molex.com/product/modjacks.html](http://www.molex.com/product/modjacks.html)

### Features and Benefits

SMT vertical mounting with added Polyimide film

Automatic vacuum placement possible; lowers customer manufacturing costs

Polyimide film remains stable across a wide range of temperatures

Suitable for high-temperature SMT manufacturing; Polyimide film will keep its form, bond and integrity

Low-profile versions (series 85513) available

Allows for tight board stacking

RJ-11 and RJ-45 jacks available

Provides flexibility for variety of design applications

50µ" Gold plating options

Meets FCC68.5, IEC60603-7 and is approved for all FCC and IEC licenses applications

Palladium nickel (PdNi) + gold (Au) flash plating option

Achieves 2500 mating cycles; meets the new durability requirement of IEC60603-7 PL 2 and FCC68.5 standards

### Applications

#### Networking

- Servers
- Switches
- Routers

#### Commercial

- Vending machines
- Cash registers
- Card swipes

#### Consumer

- Set top boxes
- Home security
- Web TV
- Gaming devices

#### Office

- Printers
- Photocopiers
- Desktops & laptops

#### Medical

- Home analysis monitors
- Bed monitors
- Breathing devices

#### Industrial

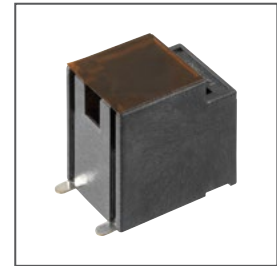
- Control units
- Vision systems
- Security systems
- Test equipment



Consumer

## Vertical SMT Modular Jacks with Polyimide Film

85510 Top Entry SMT Jacks  
85513 Low Profile, Top Entry SMT Jacks



Vertical SMT Jack with Polyimide film



Network Switch



Commercial



Medical

## Specifications

### REFERENCE INFORMATION

Packaging: Blister on Reels  
 UL File No.: E107635  
 CSA File No.: N/A  
 Mates With: Plugs, series 90075  
 RoHS: Yes  
 Halogen Free: Yes  
 Glow Wire Compliant: No

### ELECTRICAL

Voltage (max.): 125V DC  
 Current (max.): 1.5A  
 Contact Resistance: 20 mΩ max.  
 Dielectric Withstanding Voltage:  
 1000V rms  
 Insulation Resistance: 500 MΩ min.

### PHYSICAL

Housing:  
 LCP Fibre Glass Filled UL 94-VO  
 Contact: Copper Alloy  
 Plating:  
 Contact Area — Gold or Gold flash  
 over Palladium Nickel (PdNi)  
 Underplating — Nickel (Ni)  
 PCB Thickness: 1.57mm  
 Operating Temperature:  
 -40 to +85°C

## Vertical SMT Modular Jacks with Polyimide Film

### MECHANICAL

Contact Retention to Housing:  
 20 mΩ max.  
 Insertion Force to PCB: 20N max.  
 Mating Force: 20N max.  
 Unmating Force: 20N max  
 Durability (min.): 5,000 operations

## Ordering Information

### Top Entry SMT Jacks

Order No.	Housing Size	Circuits Loaded	Packaging	Type	Solder Tabs	Mating Plugs
85510-5120	8	8	13" Reel	Top Entry SMT	Yes	90075 Series
85510-5128			22" Reel			
85510-5119	6	6	13" Reel			
85510-5127			22" Reel			
85510-5118	6	4	13" Reel			
85510-5126			22" Reel			
85510-5117	4	4	13" Reel			
85510-5125			22" Reel			

### Low Profile, Top Entry SMT Jacks

Order No.	Housing Size	Circuits Loaded	Packaging	Type	Mating Plugs
85513-5113	8	8	13" Reel	Low Profile Top Entry SMT	90075 Series
85513-5109			22" Reel		
85513-5114	6	6	13" Reel		
85513-5110			22" Reel		
85513-5115	6	4	13" Reel		
85513-5111			22" Reel		
85513-5116	4	4	13" Reel		
85513-5112			22" Reel		