



Chipsmall Limited consists of a professional team with an average of over 10 year of expertise in the distribution of electronic components. Based in Hongkong, we have already established firm and mutual-benefit business relationships with customers from,Europe,America and south Asia,supplying obsolete and hard-to-find components to meet their specific needs.

With the principle of “Quality Parts,Customers Priority,Honest Operation,and Considerate Service”,our business mainly focus on the distribution of electronic components. Line cards we deal with include Microchip,ALPS,ROHM,Xilinx,Pulse,ON,Everlight and Freescale. Main products comprise IC,Modules,Potentiometer,IC Socket,Relay,Connector.Our parts cover such applications as commercial,industrial, and automotives areas.

We are looking forward to setting up business relationship with you and hope to provide you with the best service and solution. Let us make a better world for our industry!



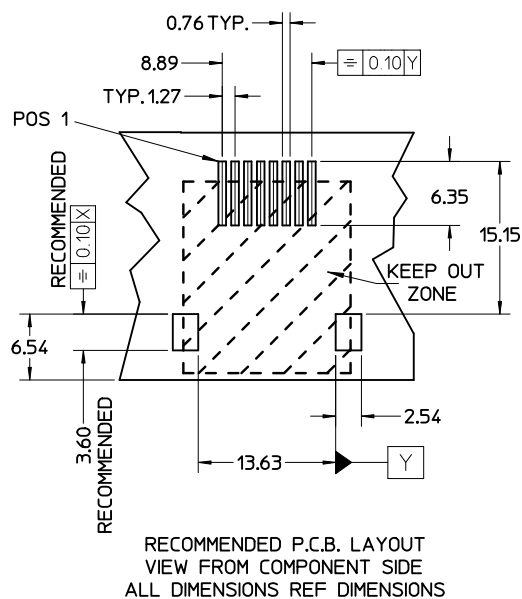
Contact us

Tel: +86-755-8981 8866 Fax: +86-755-8427 6832

Email & Skype: info@chipsmall.com Web: www.chipsmall.com

Address: A1208, Overseas Decoration Building, #122 Zhenhua RD., Futian, Shenzhen, China





- NOTES:**
- 1- JACK FOR MATING WITH SHIELDED PLUG (MOLEX 95043 AND 85668 SERIES)
 - 2- PRODUCT SPECIFICATION: PS-85543-002
 - 3- PACKAGING SPECIFICATION: PK-95122-002 (BLISTER ON REEL)
 - 4- COPLANARITY OF SIGNAL LEADS: 0.10 MAX
 - 5- RECOMMENED PCB THICKNESS 1.57

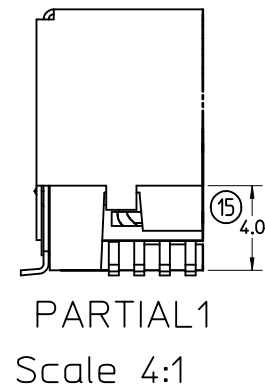
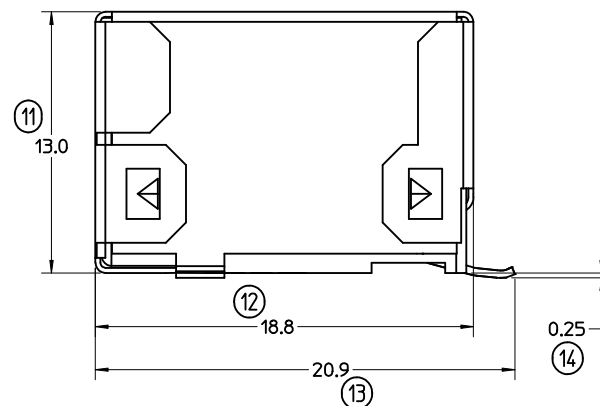
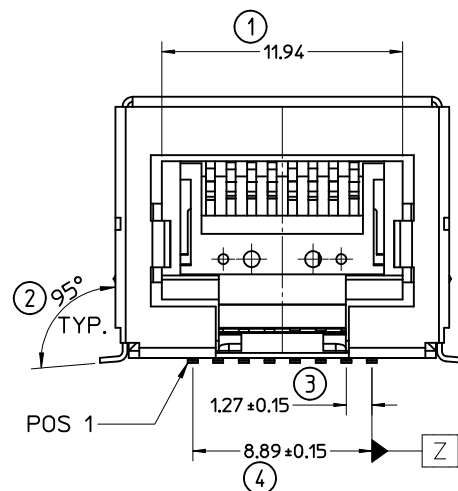
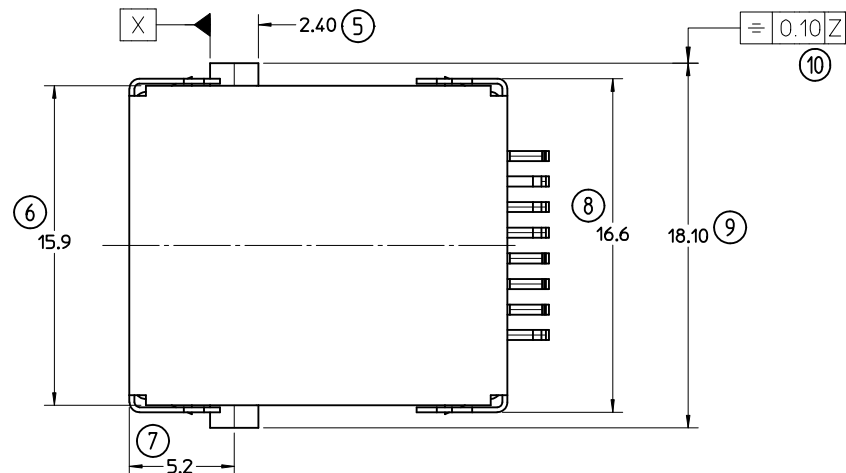
LAST INSPECTION No: (16)

TECHNICAL SPECIFICATIONS:

MATERIAL:

HOUSING: LCP GLASS FILLED UL 94V0, COLOUR BLACK.
 TERMINAL: PHOSPHOR BRONZE PLATED WITH:
 PLATING 7: POST PLATE 0.00005 MIN GOLD FLASH OVER
 0.00060 MIN PALLADIUM-NICKEL IN CONTACT AREA,
 0.00190 MIN PURE TIN IN TAIL AREA,
 BOTH OVER 0.00127 MIN NICKEL OVERALL.
 SHIELD: BRASS PLATED WITH 0.0020 MIN TIN.

PART No.	PLATING
85543-7002	7



ADDED OPTION EC NO: E2012-0040 DRAWN: JACONNOR CHKD: APPR: EFOLAN	2011/03/31 2011/10/13 DESCRIPTION	QUALITY SYMBOLS ▼=0 ▽=0	GENERAL TOLERANCES (UNLESS SPECIFIED)		DIMENSION STYLE MM ONLY		SCALE 4:1	DESIGN UNITS METRIC	THIRD ANGLE PROJECTION			
				mm	INCH	DRAWN BY OBYRNES	DATE 2006/09/05	TITLE FULLY SHIELDED TRUE SMT R/A HIGHSPEED MOD JACK 8 CCT				
			4 PLACES	± ---	± ---	CHECKED BY	DATE					
			3 PLACES	± ---	± ---	EOMAHONY	2006/09/06					
			2 PLACES	± 0.25	± ---	APPROVED BY	DATE	MOLEX MOLEX INCORPORATED MATERIAL NO. DOCUMENT NO. SD-85543-502 SHEET NO. 1 OF 1				
			1 PLACE	± 0.35	± ---	EOMAHONY	2006/09/06					
			ANGULAR ± 2 °			DRAFT WHERE APPLICABLE MUST REMAIN WITHIN DIMENSIONS						
SIZE A3		THIS DRAWING CONTAINS INFORMATION THAT IS PROPRIETARY TO MOLEX INCORPORATED AND SHOULD NOT BE USED WITHOUT WRITTEN PERMISSION										