



Chipsmall Limited consists of a professional team with an average of over 10 year of expertise in the distribution of electronic components. Based in Hongkong, we have already established firm and mutual-benefit business relationships with customers from,Europe,America and south Asia,supplying obsolete and hard-to-find components to meet their specific needs.

With the principle of “Quality Parts,Customers Priority,Honest Operation,and Considerate Service”,our business mainly focus on the distribution of electronic components. Line cards we deal with include Microchip,ALPS,ROHM,Xilinx,Pulse,ON,Everlight and Freescale. Main products comprise IC,Modules,Potentiometer,IC Socket,Relay,Connector.Our parts cover such applications as commercial,industrial, and automotives areas.

We are looking forward to setting up business relationship with you and hope to provide you with the best service and solution. Let us make a better world for our industry!



Contact us

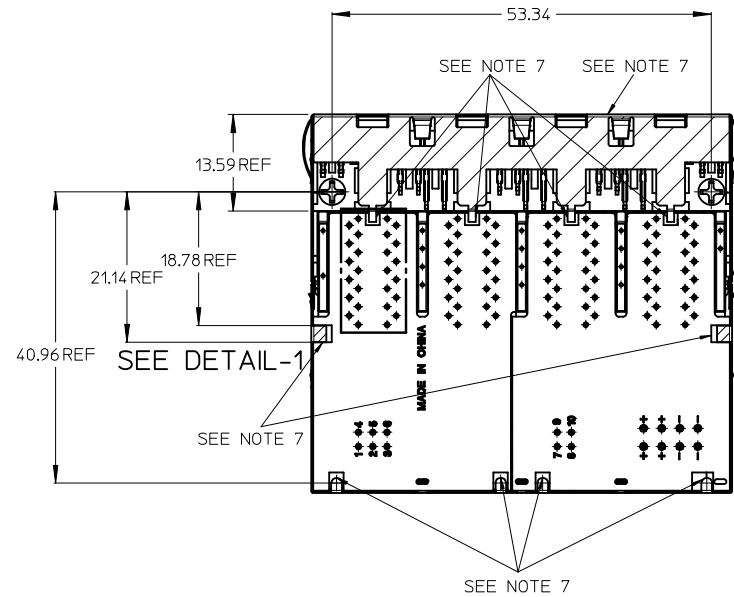
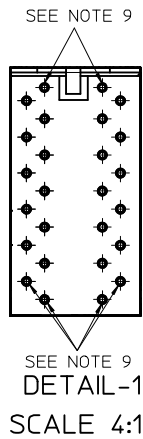
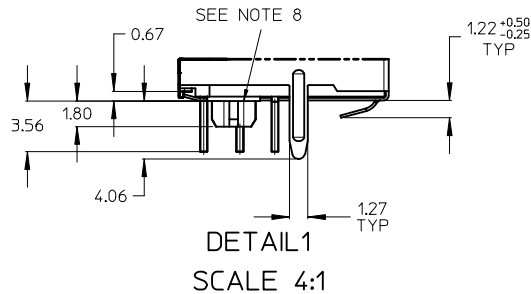
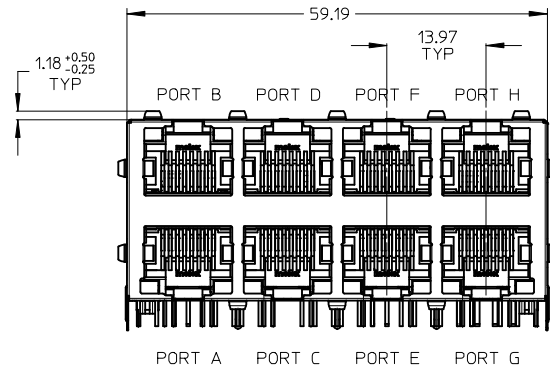
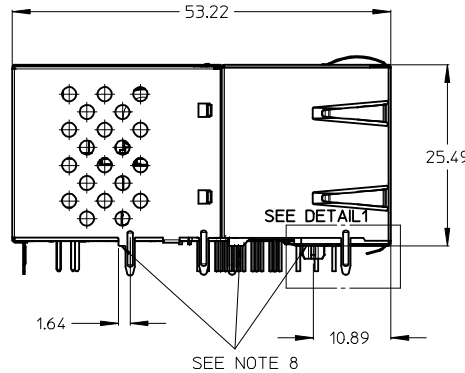
Tel: +86-755-8981 8866 Fax: +86-755-8427 6832

Email & Skype: info@chipsmall.com Web: www.chipsmall.com

Address: A1208, Overseas Decoration Building, #122 Zhenhua RD., Futian, Shenzhen, China



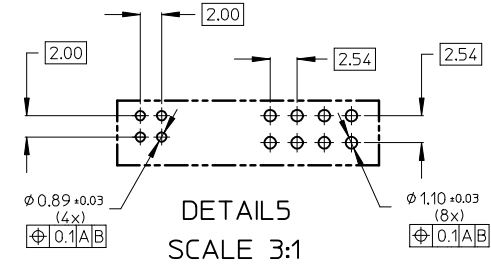
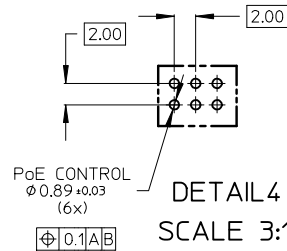
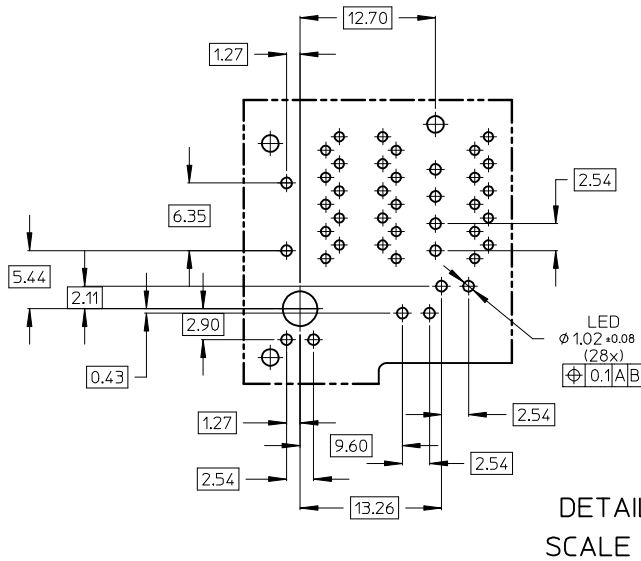
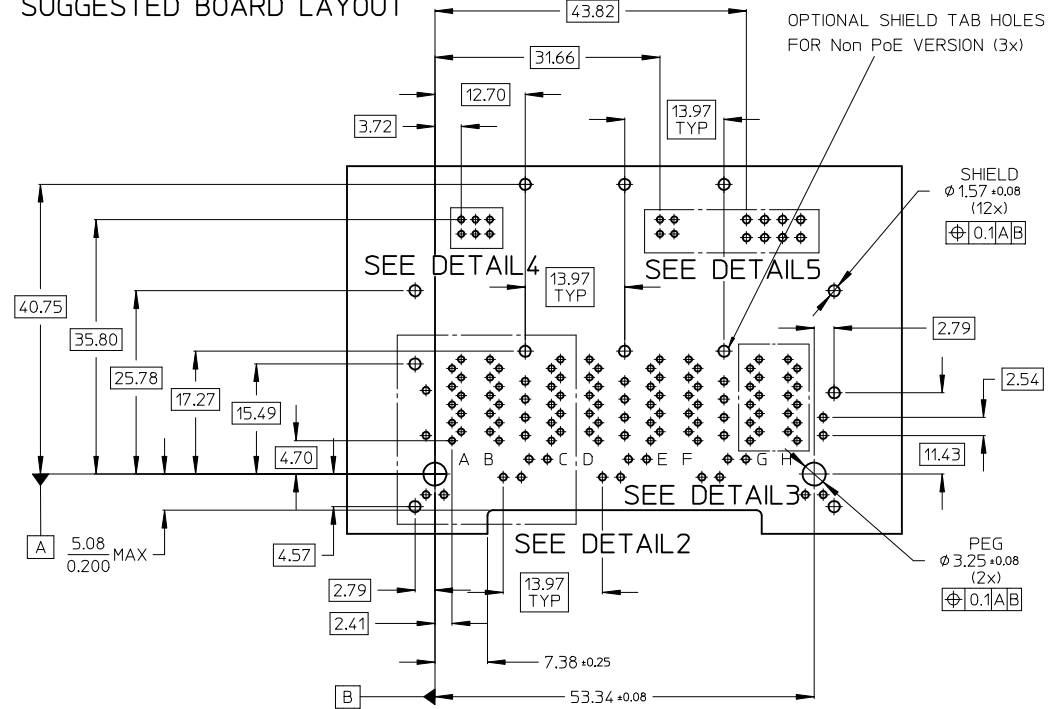
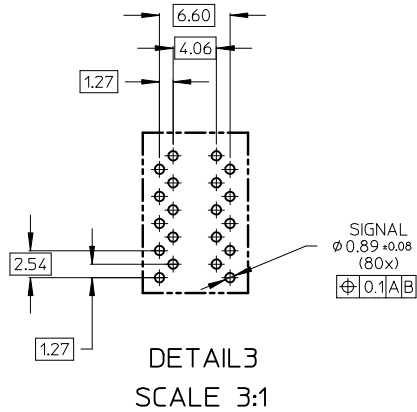
ALL IN ONE POWER SOURCING EQUIPMENT SOLUTION ACCORDING
 IEEE Std802.3-2012 WITH INTEGRATED POWER OVER ETHERNET PLUS CONTROL
 CIRCUITRY, I2C BUS CONTROL INTERFACE, GIGABIT ETHERNET
 TRANSFORMERS AND BICOLOR LED'S. AUTONOMOUS POE PLUS PSE
 OPERATION OR COMPREHENSIVE PORT CONTROL WITH EXTERNAL
 POWER MANAGEMENT.



- NOTES:
- 1 - SHIELD MATERIAL: BRASS. PLATING: Ni PRE-PLATING
 - 2 - PLASTIC MATERIAL: POLYESTER (PBT) BLACK, 30%GR, UL 94V-0
 - 3 - TERMINALS MATERIAL: COPPER ALLOY
 -BASE FINISH: NICKEL
 -CONTACT SURFACE FINISH GOLD OR GOLD FLASH OVER PALLADIUM NICKEL EXCEEDS PRODUCT REQUIREMENTS BASED ON PS-85717-001
 - 4 - MATING INTERFACE ACCORDING TO IEC 60603-7
 - 5 - PRODUCT SPECIFICATION: PS-85717-001
 - 6 - PACKAGING SPECIFICATION: PK-85729-101
 - 7 - TRACES WITHOUT INSULATION NOT ALLOWED IN THE DASHED AREAS. (TO AVOID SHORTS TO SHIELD)
 - 8 - STAND OFF TO SYSTEM BOARD
 - 9 - STUBBED PINS -> AVOID TO ROUTE TRACES OR TO PLACE ANY VIAS OR PADS BELOW THESE PINS
 - 10 - MISSING MAGNETICS AND LED INFORMATIONS SEE PS-85717-001

NO CHANGE IEC NO: 2013/04/09 DRWN: JBADER CHKD: MMANGARUDOV 2013/07/29 APPR: SSTE INKE 2015/11/26	DESCRIPTION	QUALITY SYMBOLS	GENERAL TOLERANCES (UNLESS SPECIFIED)	DIMENSION STYLE	SCALE	DESIGN UNITS	THIRD ANGLE PROJECTION																		
		$\nabla=0$ $\nabla=0$	<table border="1"> <thead> <tr> <th></th> <th>mm</th> <th>INCH</th> </tr> </thead> <tbody> <tr> <td>4 PLACES</td> <td>± ---</td> <td>± ---</td> </tr> <tr> <td>3 PLACES</td> <td>± ---</td> <td>± ---</td> </tr> <tr> <td>2 PLACES</td> <td>± 0.25</td> <td>± 0.01</td> </tr> <tr> <td>1 PLACE</td> <td>± 0.5</td> <td>± 0.02</td> </tr> <tr> <td colspan="3">ANGULAR ± .5 °</td> </tr> </tbody> </table>		mm	INCH	4 PLACES	± ---	± ---	3 PLACES	± ---	± ---	2 PLACES	± 0.25	± 0.01	1 PLACE	± 0.5	± 0.02	ANGULAR ± .5 °			MM ONLY	2:1	METRIC	
			mm	INCH																					
		4 PLACES	± ---	± ---																					
3 PLACES	± ---	± ---																							
2 PLACES	± 0.25	± 0.01																							
1 PLACE	± 0.5	± 0.02																							
ANGULAR ± .5 °																									
		<table border="1"> <thead> <tr> <th>DRAWN BY</th> <th>DATE</th> <th>TITLE</th> </tr> </thead> <tbody> <tr> <td>JBADER</td> <td>2011/05/20</td> <td rowspan="3">GIGABIT MAGNETIC JACK INTEGRATED PSE POEPLUS 2X4 LED</td> </tr> <tr> <td>CHECKED BY</td> <td>DATE</td> </tr> <tr> <td>MMANGARUDOV</td> <td>2011/05/23</td> </tr> </tbody> </table>	DRAWN BY	DATE	TITLE	JBADER	2011/05/20	GIGABIT MAGNETIC JACK INTEGRATED PSE POEPLUS 2X4 LED	CHECKED BY	DATE	MMANGARUDOV	2011/05/23	MOLEX INCORPORATED												
DRAWN BY	DATE	TITLE																							
JBADER	2011/05/20	GIGABIT MAGNETIC JACK INTEGRATED PSE POEPLUS 2X4 LED																							
CHECKED BY	DATE																								
MMANGARUDOV	2011/05/23																								
		<table border="1"> <thead> <tr> <th>APPROVED BY</th> <th>DATE</th> <th>MATERIAL NO.</th> <th>DOCUMENT NO.</th> <th>SHEET NO.</th> </tr> </thead> <tbody> <tr> <td>SSTE INKE</td> <td>2013/01/28</td> <td>857261001</td> <td>SD-85726-101</td> <td>1 OF 3</td> </tr> </tbody> </table>	APPROVED BY	DATE	MATERIAL NO.	DOCUMENT NO.	SHEET NO.	SSTE INKE	2013/01/28	857261001	SD-85726-101	1 OF 3	THIS DRAWING CONTAINS INFORMATION THAT IS PROPRIETARY TO MOLEX INCORPORATED AND SHOULD NOT BE USED WITHOUT WRITTEN PERMISSION												
APPROVED BY	DATE	MATERIAL NO.	DOCUMENT NO.	SHEET NO.																					
SSTE INKE	2013/01/28	857261001	SD-85726-101	1 OF 3																					

SUGGESTED BOARD LAYOUT

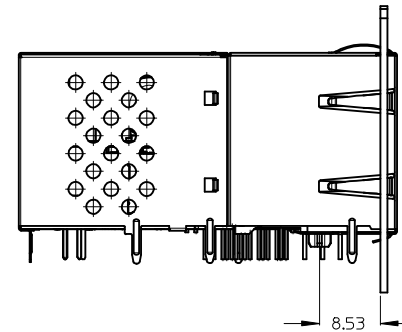
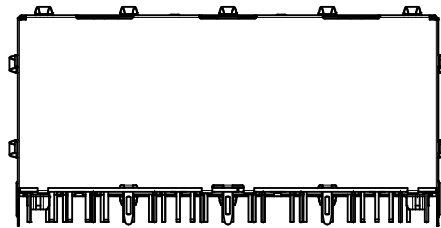
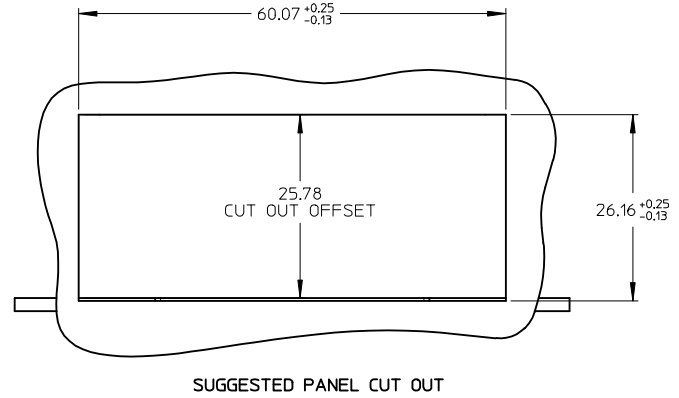
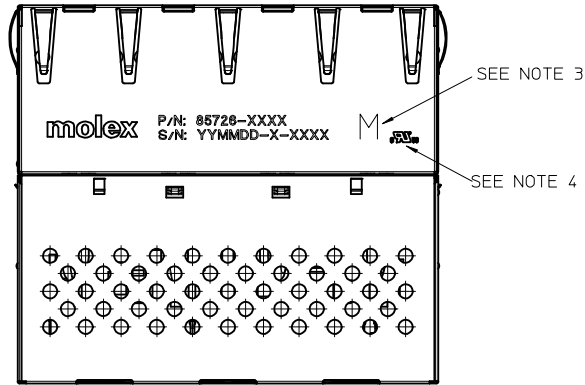


NO CHANGES	EC NO:	2013/04/09	QUALITY SYMBOLS $\nabla=0$ $\nabla=0$	GENERAL TOLERANCES (UNLESS SPECIFIED)		DIMENSION STYLE MM ONLY		SCALE 2:1	DESIGN UNITS METRIC	THIRD ANGLE PROJECTION	
	DRWN:	JBADER		mm	INCH	DRAWN BY	DATE	TITLE	GIGABIT MAGNETIC JACK INTEGRATED PSE POEPLUS 2X4 LED		
	CHKD:	MMANGARUDOV		± ---	± ---	MMANGARUDOV	2011/05/20				
	APPR:	SSTEINKE		± 0.25	± 0.01	APPROVED BY	DATE		MOLEX INCORPORATED		
REV	DESCRIPTION	± 0.5	± 0.02	SSTEINKE	2013/01/28		MATERIAL NO.	DOCUMENT NO.			
		ANGULAR ± .5°	DRAFT WHERE APPLICABLE MUST REMAIN WITHIN DIMENSIONS		SEE SHEET 1		SD-85726-101		2 OF 3		
THIS DRAWING CONTAINS INFORMATION THAT IS PROPRIETARY TO MOLEX INCORPORATED AND SHOULD NOT BE USED WITHOUT WRITTEN PERMISSION											

PRINTING
LED VERSION

P/N: 85726-1001
S/N: YYMMDD-CM-CONSECUTIVE NUMBER

PRINTING



NOTES:

- 1 - PRINTING MARKED BY LASER
- 2 - INSCRIPTION:
1st LINE: PART NUMBER
2nd LINE: DATE CODE (YEAR, MONTH, DAY)- MANUFACTURER ID - CONSECUTIVE NUMBER
- 3 - MICROSEMI VERSION MARKED BY CAPITAL M
- 4 - UL LOGO

3D UPDATED	EC NO: 2013/04/09	DESCRIPTION	QUALITY SYMBOLS		GENERAL TOLERANCES (UNLESS SPECIFIED)	DIMENSION STYLE		SCALE	DESIGN UNITS	THIRD ANGLE PROJECTION		
	DRWN: JBADER		2013/07/29	mm		INCH	2:1	METRIC	☐			
	CHKD: MMANGARUDOV		2013/07/29	4 PLACES ± --- ± ---		3 PLACES ± --- ± ---	DRAWN BY	DATE	TITLE			
	APPR: SSTE INKE		2015/11/26	2 PLACES ± 0.25 ± 0.01		1 PLACE ± 0.5 ± 0.02	MMANGARUDOV	2011/05/23	GIGABIT MAGNETIC JACK INTEGRATED PSE POEPLUS 2X4 LED			
			ANGULAR ± .5 °			APPROVED BY	DATE	MOLEX INCORPORATED				
					DRAFT WHERE APPLICABLE MUST REMAIN WITHIN DIMENSIONS	SSTE INKE	2013/01/28	DOCUMENT NO.				
						SEE SHEET 1		SD-85726-101		SHEET NO. 3 OF 3		
						THIS DRAWING CONTAINS INFORMATION THAT IS PROPRIETARY TO MOLEX INCORPORATED AND SHOULD NOT BE USED WITHOUT WRITTEN PERMISSION						