



Chipsmall Limited consists of a professional team with an average of over 10 year of expertise in the distribution of electronic components. Based in Hongkong, we have already established firm and mutual-benefit business relationships with customers from,Europe,America and south Asia,supplying obsolete and hard-to-find components to meet their specific needs.

With the principle of “Quality Parts,Customers Priority,Honest Operation,and Considerate Service”,our business mainly focus on the distribution of electronic components. Line cards we deal with include Microchip,ALPS,ROHM,Xilinx,Pulse,ON,Everlight and Freescale. Main products comprise IC,Modules,Potentiometer,IC Socket,Relay,Connector.Our parts cover such applications as commercial,industrial, and automotives areas.

We are looking forward to setting up business relationship with you and hope to provide you with the best service and solution. Let us make a better world for our industry!



Contact us

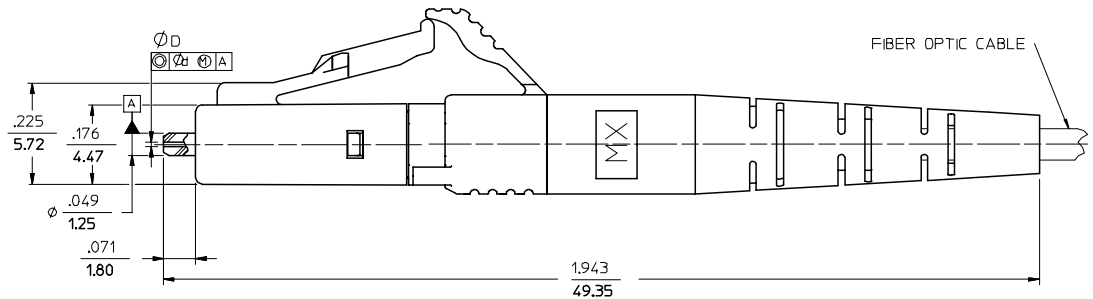
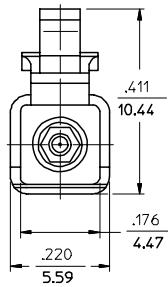
Tel: +86-755-8981 8866 Fax: +86-755-8427 6832

Email & Skype: info@chipsmall.com Web: www.chipsmall.com

Address: A1208, Overseas Decoration Building, #122 Zhenhua RD., Futian, Shenzhen, China



	13	12	11	10	9	8	7	6	5	4	3	2	1
	CONNECTOR P/N	ØD (µm)	Ød (µm)	BOOT COLOR	CABLE DESCRIPTION & Ø (mm)	CABLE TYPE							
J	86024-2000	125.50	1.0	WHITE	SMPLEX 1.6	SINGLE MODE							
	86024-2300				SMPLEX 2.0								
	86024-2350	127.00	3.0	WHITE	ZIFCORD 1.6	MULTIMODE							
	86024-3000				SMPLEX 1.6								
I	86024-3320	125.00	1.0	WHITE	SMPLEX 2.0	SINGLE MODE							
	86024-3300				ZIFCORD 1.6								
	86024-3310	126.00	1.0	WHITE	SMPLEX 1.6	MULTIMODE							
	86024-3390				SMPLEX 2.0								
H	86024-4000	125.25	0.5	GRAY	SMPLEX 1.6	SINGLE MODE							
	86024-4300				ZIFCORD 1.6								
	86024-4301	125.10-125.50	0.5	GRAY	SMPLEX 1.6	MULTIMODE							
	86024-5000				SMPLEX 2.0								
G	86024-5300	125.51-125.90	0.5	WHITE	ZIFCORD 1.6	SINGLE MODE							
	86024-5310				SMPLEX 1.6								
	86024-3700	125.00	1.0	WHITE	SMPLEX 2.0	MULTIMODE							
	86024-6000				SMPLEX 1.6								
F	86024-6300	125.25	0.5	WHITE	SMPLEX 2.0	SINGLE MODE							
	86090-4250				ZIFCORD 1.6								
G	86090-4260	125.10-125.50	0.5	WHITE	SMPLEX 1.6	MULTIMODE							
	86090-4270				SMPLEX 2.0								
	86090-4280	125.51-125.90	0.5	WHITE	ZIFCORD 1.6	SINGLE MODE							
	86090-2900				SMPLEX 1.6								
F	86090-2930	125.50	0.5	GRAY	SMPLEX 2.0	MULTIMODE							
	86090-2990				ZIFCORD 1.6								
	86090-4100	125.00	1.0	WHITE	SMPLEX 1.6	SINGLE MODE							
	86090-4130				SMPLEX 2.0								
E	86090-6100	125.25	0.5	WHITE	ZIFCORD 1.6	MULTIMODE							
	86090-6130				SMPLEX 1.6								
	86090-6110	125.25	0.5	WHITE	SMPLEX 2.0	SINGLE MODE							
	86090-6135				ZIFCORD 1.6								
D	86024-3100	126.00	1.0	WHITE	SMPLEX 2.0	MULTIMODE							



NOTES:

- DUST CAPS ARE NOT SHOWN BUT INCLUDED.
 - ALL DIMENSIONS ARE GIVEN IN INCHES, UNLESS OTHERWISE SPECIFIED.
- △ P/N 86024-4301, 86024-3310 AND 86024-5310 ARE BULK PACKED.

FC NO: MF2006-0228 DRW: KATARZ I ENE 2005/10/10 CHKD: 2005/10/10 APPR: J GUMIN 2005/10/11	QUALITY SYMBOLS ▽=0 ▽=0	GENERAL TOLERANCES (UNLESS SPECIFIED)		DIMENSION STYLE		SCALE	DESIGN UNITS	THIRD ANGLE PROJECTION
		mm	INCH	IN/MM	INCH	4:1	INCH	
M	DESCRIPTION	4 PLACES	± --- ± ---	BG	DRAWN BY	DATE	TITLE	
		3 PLACES	± --- ± ---		CHECKED BY	DATE	LC CONNECTOR	
		2 PLACES	± --- ± ---		YB	10.13.99	MOLEX INCORPORATED	
		1 PLACE	± --- ± ---		SM	10.13.99	DOCUMENT NO. 860RR-RRRRCD SHEET NO. 1 OF 1	
DRAFT WHERE APPLICABLE MUST REMAIN WITHIN DIMENSIONS		ANGULAR ±1/2°		MATERIAL NO. SEE TABLE		THIS DRAWING CONTAINS INFORMATION THAT IS PROPRIETARY TO MOLEX INCORPORATED AND SHOULD NOT BE USED WITHOUT WRITTEN PERMISSION		