



Chipsmall Limited consists of a professional team with an average of over 10 year of expertise in the distribution of electronic components. Based in Hongkong, we have already established firm and mutual-benefit business relationships with customers from,Europe,America and south Asia,supplying obsolete and hard-to-find components to meet their specific needs.

With the principle of “Quality Parts,Customers Priority,Honest Operation,and Considerate Service”,our business mainly focus on the distribution of electronic components. Line cards we deal with include Microchip,ALPS,ROHM,Xilinx,Pulse,ON,Everlight and Freescale. Main products comprise IC,Modules,Potentiometer,IC Socket,Relay,Connector.Our parts cover such applications as commercial,industrial, and automotives areas.

We are looking forward to setting up business relationship with you and hope to provide you with the best service and solution. Let us make a better world for our industry!



## Contact us

Tel: +86-755-8981 8866 Fax: +86-755-8427 6832

Email & Skype: info@chipsmall.com Web: www.chipsmall.com

Address: A1208, Overseas Decoration Building, #122 Zhenhua RD., Futian, Shenzhen, China

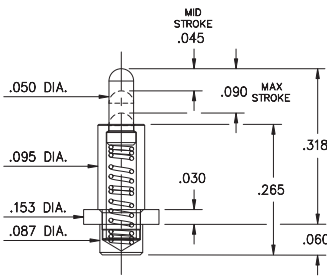


# SPRING-LOADED PINS

## DISCRETE SPRING-LOADED CONTACTS • POWER SPRING PINS

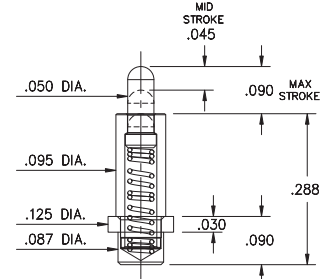
### 0851

**0851-0-15-20-82-14-11-0**  
Power spring pin  
Solder Mount in .090 min. mounting hole



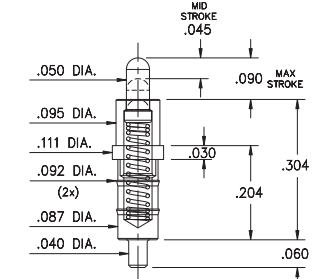
### 0853

**0853-0-15-20-82-14-11-0**  
Power spring pin  
Solder Mount in .090 min. mounting hole



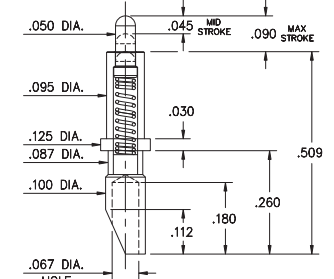
### 0852

**0852-0-15-20-83-14-11-0**  
Power spring pin  
Solder Mount in .043 min. mounting hole



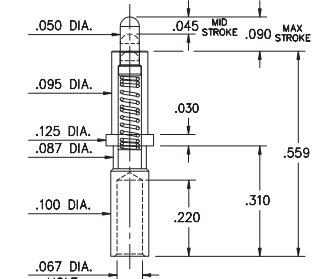
### 0854

**0854-0-15-20-82-14-11-0**  
Power spring pin, Soldercup  
Accepts wire sizes up to .057" Dia.



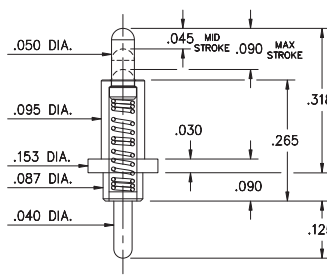
### 0855

**0855-0-15-20-82-14-11-0**  
Power spring pin, Wire crimp termination  
for wire sizes 16 AWG Max. / 20 AWG Min.



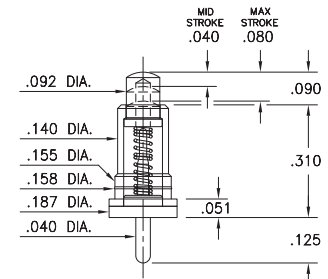
### 0856

**0856-0-15-20-82-14-11-0**  
Power spring pin  
Solder Mount in .043 min. mounting hole



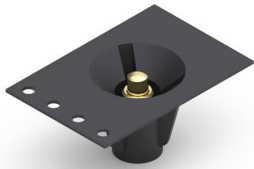
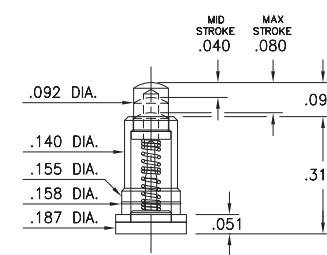
### 0861

**0861-0-15-20-82-14-11-0**  
Solder Mount in .043 min. mounting hole  
\*Force @ Mid. Stroke 100g



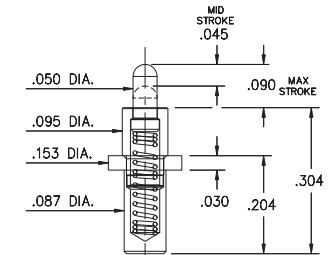
### 0871

**0871-0-15-20-82-14-11-0**  
Long stroke, Surface mount \*Force @ Mid. Stroke 100g  
Also available on 24mm wide carrier tape: 330 parts per 13" reel  
Order as: 0871-0-57-20-82-14-11-0



### 0850

**0850-0-15-20-83-14-11-0**  
Power spring pin, Solder Mount in .090 min. mounting hole  
Also available on 32mm wide carrier tape: 500 parts per 13" reel  
Order as: 0850-0-57-20-83-14-11-0



#### Material Specifications:

**Sleeve & Plunger Material:** Copper Alloy  
**Spring Material:** Stainless Steel 302  
**Sleeve & Plunger Finish:** 20 μ" Gold over Nickel  
**Spring Finish:** 10 μ" Gold over Nickel  
**Dimensions:** Inches  
**Tolerances On:** Lengths: ±.006  
Diameters: ±.002  
Angles: ±2°



#### Mechanical & Electrical Specifications:

**Durability:** 1,000,000 cycles  
**Rated Current (Free air):**  
Continuous 9 amps @ 10° C temperature rise  
**Contact Resistance:** 20 mΩ max.  
**Environmental Specifications:**  
**Operating temperature range:** -55/+125° C

**82, 83, Springs are not interchangeable**

Order Code: 08XX - X - XX - 20 - **8X** - 14 - 11 - 0

Spring Number

Spring Number	Mid. Stroke	Max. Stroke	Force @ Mid. Stroke	Initial Force (Pre-Load)
* 82	.045	.090	120 g	25 g
83	.045	.090	120 g	25 g

