



Chipsmall Limited consists of a professional team with an average of over 10 year of expertise in the distribution of electronic components. Based in Hongkong, we have already established firm and mutual-benefit business relationships with customers from,Europe,America and south Asia,supplying obsolete and hard-to-find components to meet their specific needs.

With the principle of “Quality Parts,Customers Priority,Honest Operation,and Considerate Service”,our business mainly focus on the distribution of electronic components. Line cards we deal with include Microchip,ALPS,ROHM,Xilinx,Pulse,ON,Everlight and Freescale. Main products comprise IC,Modules,Potentiometer,IC Socket,Relay,Connector.Our parts cover such applications as commercial,industrial, and automotives areas.

We are looking forward to setting up business relationship with you and hope to provide you with the best service and solution. Let us make a better world for our industry!



## Contact us

Tel: +86-755-8981 8866 Fax: +86-755-8427 6832

Email & Skype: info@chipsmall.com Web: www.chipsmall.com

Address: A1208, Overseas Decoration Building, #122 Zhenhua RD., Futian, Shenzhen, China

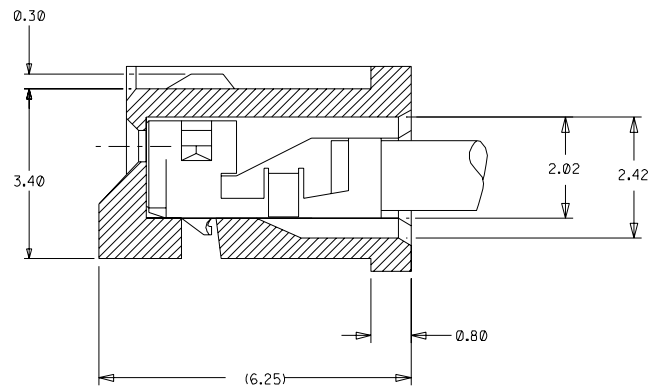
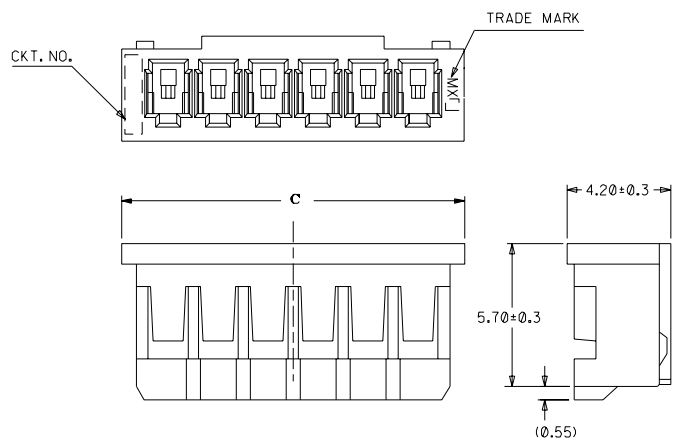


DWG. NO. SD 87369-\*\*-00

CAD FILE S87369.DGN

▽

DO NOT SCALE DRAWING



**TERMINAL ASSEMBLY DRAWING**  
(10:1)

**PART NO.LEGEND**

87369 - \*\* 0 \*

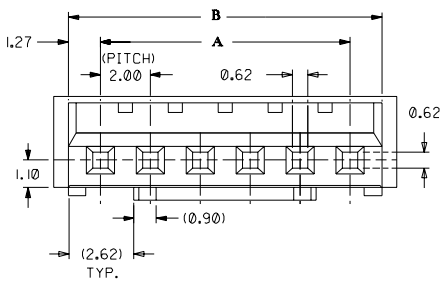
CKT SIZE ———— COLOR OPTION

0 - NATURAL  
1 - BLACK  
2 - RED  
3 - YELLOW  
4 - BLUE  
5 - GREEN

**NOTES**

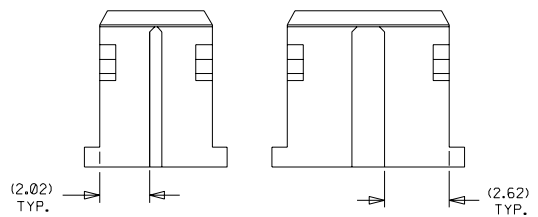
1. APPLICABLE TERMINAL :50212-8\*00
2. MATERIAL : NYLON 66, UL94V-0 NATURAL
3. MATES WITH 89400-\*\*-10/\*\*20 & 89401-\*\*-10

33.74	32.54	30	87369-160*	16
31.74	30.54	28	87369-150*	15
29.74	28.54	26	87369-140*	14
27.74	26.54	24	87369-130*	13
25.74	24.54	22	87369-120*	12
23.74	22.54	20	87369-110*	11
21.74	20.54	18	87369-100*	10
19.74	18.54	16	87369-090*	9
17.74	16.54	14	87369-080*	8
15.74	14.54	12	87369-070*	7
13.74	12.54	10	87369-060*	6
11.74	10.54	8	87369-050*	5
9.74	8.54	6	87369-040*	4
7.74	6.54	4	87369-030*	3
5.74	4.54	2	87369-020*	2
C	B	A	ENG NO.	CKT



**IN CASE OF  
2 CIRCUIT HSG.**

**IN CASE OF  
3 CIRCUIT HSG.**



**UNITS : MM**

				MATERIAL :		MOLEX SINGAPORE PTE LTD	
B5	REVISE PART NO. LEGEND & NOTE 3 PER ECN 1999-0061	-	SAK	980814	SEE NOTES		SHEET 1 OF 1
B4	REL 87369-**-05 (GREEN) AS PER PDR* 98-06-0330 (AS PER ECN* S1998-0617)	-	SEE TOH	980623			GENERAL TOLERANCES ± 0.20/0.008
B3	ADD COLOR OPTION REPLACE SD-87369-**-0*	S60565	SAK	GMS	960618	REV B5	
LTR	REVISION RECORD	ECN	DR	CHK	DATE	DRAWN BY CLEE 920305	CHK'D BY JOEY 920326
REVISE ONLY ON CAD SYSTEM						APPR'D BY ROY 920326	SCALE 5:1
						TITLE : 2.0 MM PITCH WIRE TO BOARD CONN. RECEPTACLE	
						DWG. NO.: SD   87369-**-0*	