



Chipsmall Limited consists of a professional team with an average of over 10 year of expertise in the distribution of electronic components. Based in Hongkong, we have already established firm and mutual-benefit business relationships with customers from,Europe,America and south Asia,supplying obsolete and hard-to-find components to meet their specific needs.

With the principle of “Quality Parts,Customers Priority,Honest Operation,and Considerate Service”,our business mainly focus on the distribution of electronic components. Line cards we deal with include Microchip,ALPS,ROHM,Xilinx,Pulse,ON,Everlight and Freescale. Main products comprise IC,Modules,Potentiometer,IC Socket,Relay,Connector.Our parts cover such applications as commercial,industrial, and automotives areas.

We are looking forward to setting up business relationship with you and hope to provide you with the best service and solution. Let us make a better world for our industry!



Contact us

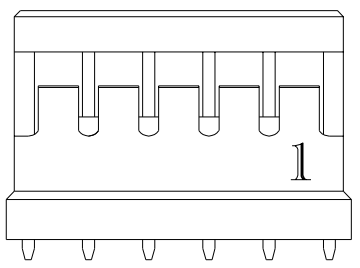
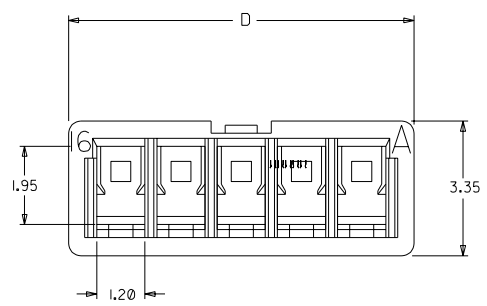
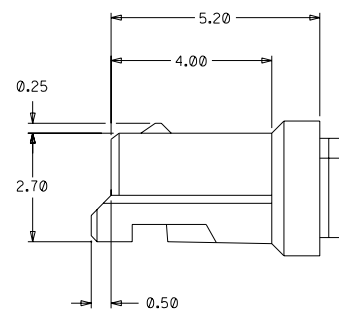
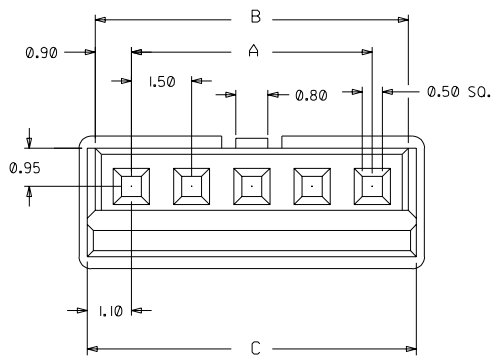
Tel: +86-755-8981 8866 Fax: +86-755-8427 6832

Email & Skype: info@chipsmall.com Web: www.chipsmall.com

Address: A1208, Overseas Decoration Building, #122 Zhenhua RD., Futian, Shenzhen, China



PART NO.	NO. OF CKT'S	A	B	C	D
87439-0201	2	1.50	3.30	3.70	4.10
87439-0301	3	3.00	4.80	5.20	5.60
87439-0401	4	4.50	6.30	6.70	7.10
87439-0501	5	6.00	7.80	8.20	8.60
87439-0601	6	7.50	9.30	9.70	10.10
87439-0701	7	9.00	10.80	11.20	11.60
87439-0801	8	10.50	12.30	12.70	13.10
87439-0901	9	12.00	13.80	14.20	14.60
87439-1001	10	13.50	15.30	15.70	16.10
87439-1101	11	15.00	16.80	17.20	17.60
87439-1201	12	16.50	18.30	18.70	19.10
87439-1301	13	18.00	19.80	20.20	20.60
87439-1401	14	19.50	21.30	21.70	22.10
87439-1501	15	21.00	22.80	23.20	23.60



NOTE:
 1. MATERIAL:
 NYLON 66, 94V-0, COLOR: BLACK
 2. HOUSING TO ACCEPT MOLEX P/N 87421-0000

REL PER PDR# S-000348-00-00 EC NO. S2003-0498 DRWN: KSEE CHK: KCLING APPR: SKTOH	QUALITY SYMBOLS MAJOR $\blacktriangledown = 0$ CRITICAL $\nabla = 0$	GENERAL TOLERANCES: (UNLESS SPECIFIED)		SCALE NTS	DESIGN UNITS <input checked="" type="checkbox"/> mm <input type="checkbox"/> INCH	THIRD ANGLE PROJECTION	DIMENSIONS: <input type="checkbox"/> mm <input type="checkbox"/> INCH <input type="checkbox"/> mm <input checked="" type="checkbox"/> INCH ONLY	SHT	REV
		4 PLACES	$\pm 0. -$	$\pm. -$	DRAWN BY & DATE KSEE 030415		TITLE: 1.50 mm PITCH, HOUSING, RECEPTACLE		
		3 PLACES	$\pm 0. -$	$\pm. -$	CHECKED BY & DATE KCLING 030526		MOLEX INCORPORATED		
		2 PLACES	± 0.20	$\pm. -$	APPROVED BY & DATE SKTOH 030526				
A	REV	1 PLACE	$\pm 0. -$	$\pm. -$	CAD FILENAME	MATERIAL NO. SEE TABLE	DRAWING NO. SD-87439-001	SHEET NO. 1 OF 1	SIZE A3

ANGULAR: $\pm 3^\circ$

THIS DRAWING CONTAINS INFORMATION THAT IS PROPRIETARY TO MOLEX INCORPORATED AND SHOULD NOT BE USED WITHOUT WRITTEN PERMISSION.