



Chipsmall Limited consists of a professional team with an average of over 10 year of expertise in the distribution of electronic components. Based in Hongkong, we have already established firm and mutual-benefit business relationships with customers from,Europe,America and south Asia,supplying obsolete and hard-to-find components to meet their specific needs.

With the principle of "Quality Parts,Customers Priority,Honest Operation,and Considerate Service",our business mainly focus on the distribution of electronic components. Line cards we deal with include Microchip,ALPS,ROHM,Xilinx,Pulse,ON,Everlight and Freescale. Main products comprise IC,Modules,Potentiometer,IC Socket,Relay,Connector.Our parts cover such applications as commercial,industrial, and automotives areas.

We are looking forward to setting up business relationship with you and hope to provide you with the best service and solution. Let us make a better world for our industry!



Contact us

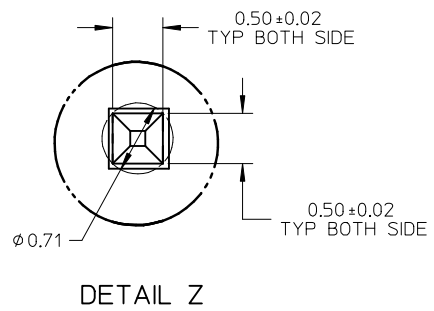
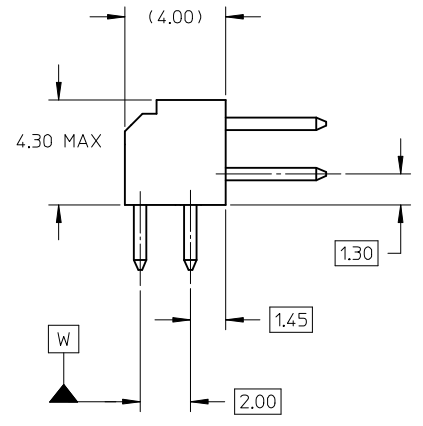
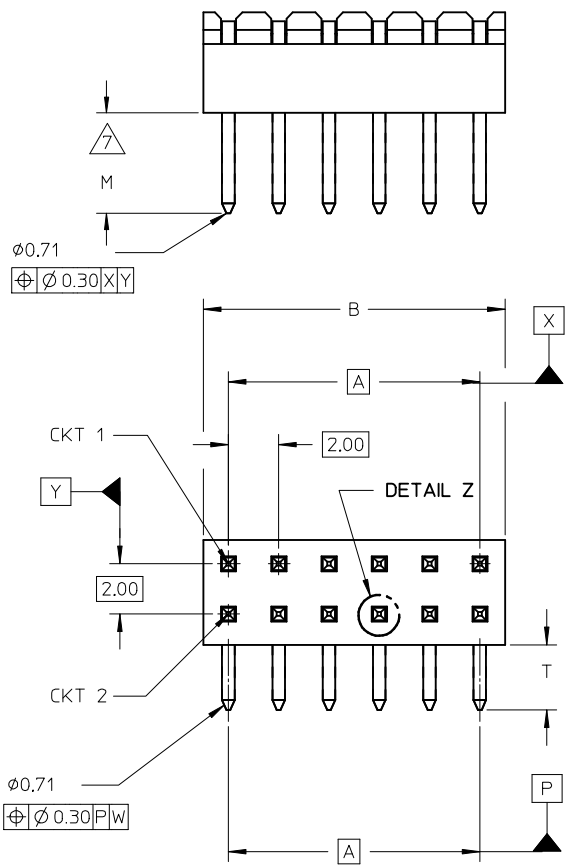
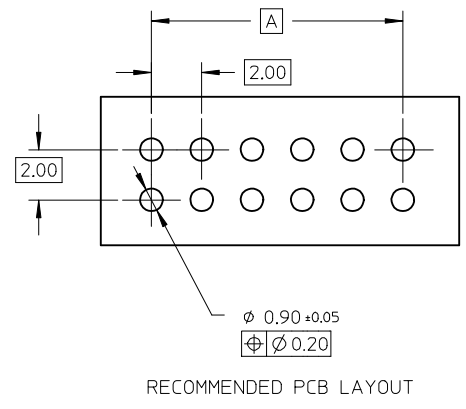
Tel: +86-755-8981 8866 Fax: +86-755-8427 6832

Email & Skype: info@chipsmall.com Web: www.chipsmall.com

Address: A1208, Overseas Decoration Building, #122 Zhenhua RD., Futian, Shenzhen, China



- NOTES:
- MATERIAL:
 - HSG: PCT, 30% GLASS FILLED, UL 94V-0, COLOUR BLACK.
 - PIN: 0.50MM SQ PHOSPHOR BRONZE 510
 - PLATING:
 - ***5 - 0.05um MIN - 0.25um MAX GOLD IN CONTACT AREA, 2.00um MIN TIN IN SOLDER TAIL AREA, BOTH OVER 1.25um MIN NICKEL OVERALL
 - ***6 - 0.38um MIN GOLD IN CONTACT AREA, 2.00um MIN TIN IN SOLDER TAIL AREA, BOTH OVER 1.25um MIN NICKEL OVERALL
 - ***7 - 0.76um MIN GOLD IN CONTACT AREA, 2.00um MIN TIN IN SOLDER TAIL AREA, BOTH OVER 1.25um MIN NICKEL OVERALL
 - ***8 - 2.54um MIN TIN OVER 1.25um MIN NICKEL OVERALL
 - 12 CKT USED FOR ILLUSTRATION ONLY
 - PART TO BE PACKED IN POCKET TRAY/TUBE (SEE TABLE).
 - PRODUCT SPEC PS-87761-100 APPLIES.
 - RECOMMENDED PCB BOARD THK 1.60±0.10 MM.
- △ MATING LENGTH: 1 - 4.00MM
 2 - 3.50MM
 3 - 3.06MM
 4 - 5.75MM
- △ PART NUMBERS THAT ARE UNAVAILABLE IN THIS SD:
 87760-0646, 87760-1046, 87760-1446, 87760-2446, 87760-4046.
 (REFER TO SD-87760-133 FOR THESE PART NUMBERS)



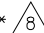
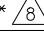
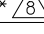
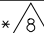
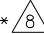


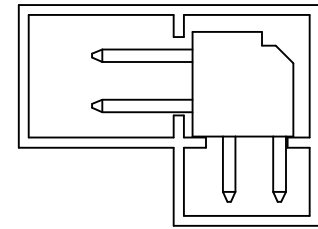
LEGEND:

87760 - * * * *


△ PLATING OPTION (SEE NOTE 2)
 △ MATING OPTION


SHT 3, +87760-5516 EC NO: S2013-0842 DRWN:ATSEE 2013/05/31 CH'KD:SKANG 2013/06/28 APPR:MLONG 2013/07/08	QUALITY SYMBOLS $F_{\Delta} = 0$ $F_{\square} = 0$ $F_{\nabla} = 0$	GENERAL TOLERANCES (UNLESS SPECIFIED)		DIMENSION STYLE MM ONLY		SCALE NTS	DESIGN UNITS METRIC	THIRD ANGLE PROJECTION		
		4 PLACES ± --- ± ---	mm INCH	DRAWN BY KSEE	DATE 2003/10/15	TITLE MGRID, 2MM DUAL ROW HDR. R/A				
		3 PLACES ± --- ± ---		CHECKED BY KCL ING	DATE 2003/12/02					
		2 PLACES ± 0.2 ± ---		APPROVED BY SKTOH	DATE 2003/12/11					
		1 PLACE ± --- ± ---		MATERIAL NO. SEE TABLE		DOCUMENT NO. SD-87760-109			SHEET NO. 1 OF 3	
		0 PLACE ± ±		THIS DRAWING CONTAINS INFORMATION THAT IS PROPRIETARY TO MOLEX INCORPORATED AND SHOULD NOT BE USED WITHOUT WRITTEN PERMISSION						
DRAFT WHERE APPLICABLE MUST REMAIN WITHIN DIMENSIONS		ANGULAR ± 3 °								

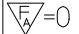
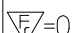
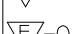

10	9	8	7	6	5	4	3	2	1
PART NUMBER	VOID PIN LOCATION	CKT SIZE	A	B	M	T	PACKAGING TYPE		
87760-04**	-	04	2.00	4.00	REFER TO NOTE 	2.60	TRAY		
87760-06** 	-	06	4.00	6.00					
87760-08**	-	08	6.00	8.00					
87760-10** 	-	10	8.00	10.00					
87760-12** 	-	12	10.00	12.00					
87760-14** 	-	14	12.00	14.00					
87760-16**	-	16	14.00	16.00					
87760-18**	-	18	16.00	18.00					
87760-20**	-	20	18.00	20.00					
87760-22**	-	22	20.00	22.00					
87760-24** 	-	24	22.00	24.00					
87760-26**	-	26	24.00	26.00					
87760-28**	-	28	26.00	28.00					
87760-30**	-	30	28.00	30.00					
87760-32**	-	32	30.00	32.00					
87760-34**	-	34	32.00	34.00					
87760-36**	-	36	34.00	36.00					
87760-38**	-	38	36.00	38.00					
87760-40** 	-	40	38.00	40.00					
87760-42**	-	42	40.00	42.00					
87760-44**	-	44	42.00	44.00					
87760-46**	-	46	44.00	46.00					
87760-48**	-	48	46.00	48.00					
87760-50**	-	50	48.00	50.00					



PART IN TUBE

SHT 3, +87760-5516 EC NO: S2013-0842 DRWN:ATSEE 2013/05/31 CHKD:SKANG 2013/06/28 APPR:MLONG 2013/07/08	QUALITY SYMBOLS	GENERAL TOLERANCES (UNLESS SPECIFIED)	DIMENSION STYLE	SCALE	DESIGN UNITS	THIRD ANGLE PROJECTION
	$F_A=0$	mm INCH	MM ONLY	NTS	METRIC	
	$F_G=0$	4 PLACES ± --- ± ---	DRAWN BY DATE	TITLE		
	$F_P=0$	3 PLACES ± --- ± ---	KSEE 2003/10/15	MGRID, 2MM DUAL ROW HDR. R/A		
	2 PLACES ± 0.2 ± ---	CHECKED BY DATE				
	1 PLACE ± --- ± ---	KCLING 2003/12/02				
	0 PLACE ± ±	APPROVED BY DATE	DOCUMENT NO.			
	ANGULAR ± 3 °	SKTOH 2003/12/11	SD-87760-109			
	DRAFT WHERE APPLICABLE MUST REMAIN WITHIN DIMENSIONS	MATERIAL NO.	SHEET NO.			
		SEE TABLE	2 OF 3			
		SIZE A3	THIS DRAWING CONTAINS INFORMATION THAT IS PROPRIETARY TO MOLEX INCORPORATED AND SHOULD NOT BE USED WITHOUT WRITTEN PERMISSION			

10	9	8	7	6	5	4	3	2	1
PART NUMBER	VOID PIN LOCATIONS	CKT SIZE	A	B	M	T	PACKAGING TYPE		
87760-5116	5, 6 & 26	50	48.00	50.00	REFER TO NOTE 	2.60	TUBE		
87760-531*	-	24	22.00	24.00		1.50	TRAY		
87760-5216	-	04	2.00	4.00		2.60	TUBE		
87760-5416	-	20	18.00	20.00					
87760-5248	-	28	26.00	28.00					
87760-5516	5, 6, 7, 8, 9, 10, 15, 16, 17, 18, 19, 20, 25, 26, 27, 28, 29, 30	34	32.00	34.00					

SHT 3, +87760-5516 EC NO: S2013-0842 DRWN:ATSEE 2013/05/31 CHKD:SKANG 2013/06/28 APPR:MLONG 2013/07/08	QUALITY SYMBOLS	GENERAL TOLERANCES (UNLESS SPECIFIED)		DIMENSION STYLE MM ONLY		SCALE NTS	DESIGN UNITS METRIC	THIRD ANGLE PROJECTION	
		4 PLACES	mm	INCH	DRAWN BY	DATE	TITLE		
		3 PLACES	± ---	± ---	KSEE	2003/10/15	MGRID, 2MM DUAL ROW HDR. R/A		
		2 PLACES	± ---	± ---	CHECKED BY	DATE	 DOCUMENT NO. SD-87760-109 SHEET NO. 3 OF 3		
	1 PLACE	± 0.2	± ---	KCLING	2003/12/02				
	0 PLACE	± ---	± ---	APPROVED BY	DATE				
		±	±	SKTOH	2003/12/11	MATERIAL NO.		SEE TABLE	
		ANGULAR ± 3 °		DRAFT WHERE APPLICABLE MUST REMAIN WITHIN DIMENSIONS		THIS DRAWING CONTAINS INFORMATION THAT IS PROPRIETARY TO MOLEX INCORPORATED AND SHOULD NOT BE USED WITHOUT WRITTEN PERMISSION			