



Chipsmall Limited consists of a professional team with an average of over 10 year of expertise in the distribution of electronic components. Based in Hongkong, we have already established firm and mutual-benefit business relationships with customers from,Europe,America and south Asia,supplying obsolete and hard-to-find components to meet their specific needs.

With the principle of “Quality Parts,Customers Priority,Honest Operation,and Considerate Service”,our business mainly focus on the distribution of electronic components. Line cards we deal with include Microchip,ALPS,ROHM,Xilinx,Pulse,ON,Everlight and Freescale. Main products comprise IC,Modules,Potentiometer,IC Socket,Relay,Connector.Our parts cover such applications as commercial,industrial, and automotives areas.

We are looking forward to setting up business relationship with you and hope to provide you with the best service and solution. Let us make a better world for our industry!



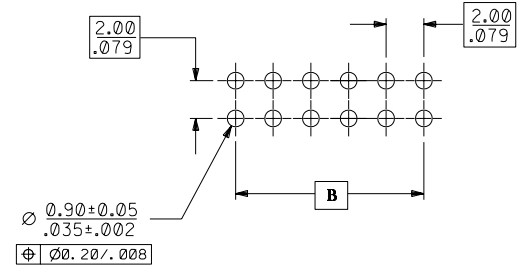
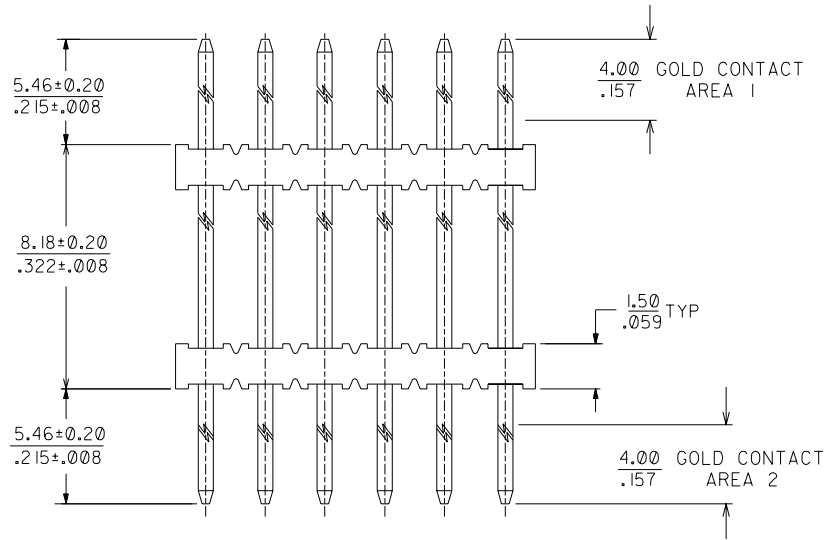
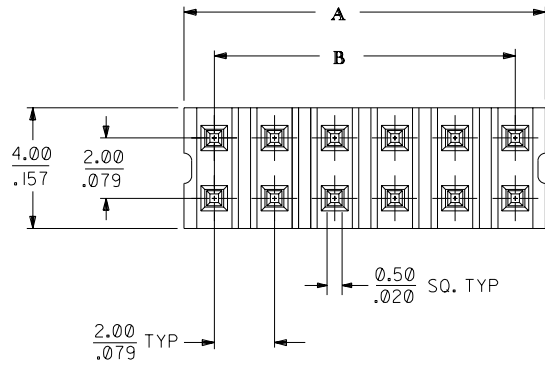
Contact us

Tel: +86-755-8981 8866 Fax: +86-755-8427 6832

Email & Skype: info@chipsmall.com Web: www.chipsmall.com

Address: A1208, Overseas Decoration Building, #122 Zhenhua RD., Futian, Shenzhen, China





RECOMMENDED PCB PATTERN
(SCALE 5:1)

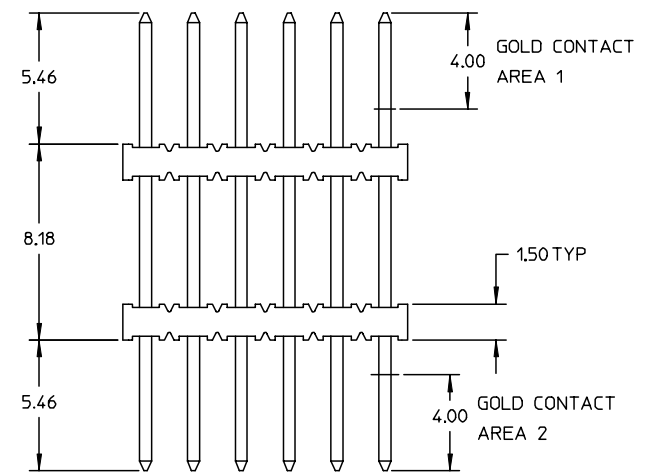
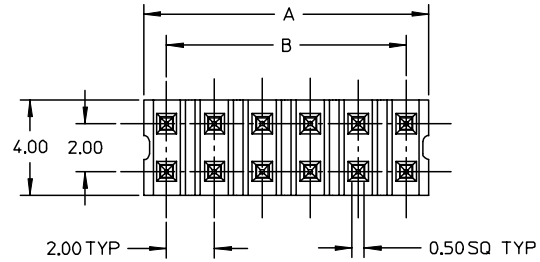
NOTES:

- 1) PLATING:
0.38um/15u" MIN GOLD IN BOTH CONTACT AREA
BOTH OVER NICKEL OVERALL.
 - 2) MATERIAL:
HSG : HIGH TEMP THERMOPLASTIC,
COLOR BLACK
PIN : 0.50mm SQ. COPPER ALLOY.
 - 3) 12 CKT USED FOR ILLUSTRATION ONLY.
 - 4) PACKED IN POCKET TRAY.
 - 5) PIN PUSHOUT FORCE : 1 KG MIN IN EITHER DIRECTION.
- △6) CKT 4 & 6 IS CUT FROM CKT 8 AND 12 RESPECTIVELY,
ROUGH EDGES ARE EXPECTED ALONG THE CUTTING EDGES.

PART NO.	CKT SIZE	DIMENSION			
		A		B	
		MM	INCH	MM	INCH
87761-0006	04	3.90	.154	2.00	.079
87761-0007	06	5.90	.232	4.00	.157
87761-0008	12	11.90	.468	10.00	.394

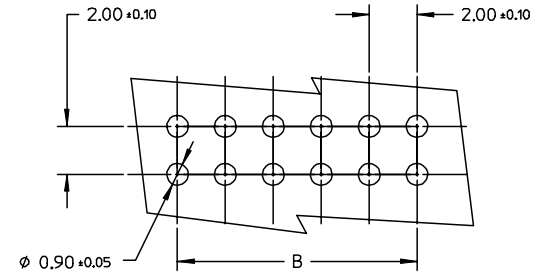
REL PER PDR*S-000272-00-00 EC NO. S2003-0276 DRWN: KSEE 021219 CHK: KCLING 030102 APPR: PTLIM 030102	QUALITY SYMBOLS MAJOR ▼ = 0 CRITICAL ▽ = 0	GENERAL TOLERANCES: (UNLESS SPECIFIED)		SCALE NTS	DESIGN UNITS <input checked="" type="checkbox"/> mm <input type="checkbox"/> INCH	THIRD ANGLE PROJECTION	DIMENSIONS: <input checked="" type="checkbox"/> mm <input type="checkbox"/> INCH <input type="checkbox"/> mm ONLY	SHT	REV	
		4 PLACES	±0. -	±. -	DRAWN BY & DATE KSEE 021219	TITLE: 2MM DUAL ROW, DUAL WAFER, 4,6 & 12 CKT, VERTICAL THROUGH HOLE HDR.				
		3 PLACES	±0. -	±. 010	CHECKED BY & DATE KCLING 030102	MOLEX INCORPORATED				
		2 PLACES	±0.20	±. -	APPROVED BY & DATE PTLIM 030102					
1 PLACE	±0. -	±. -	CAD FILENAME	MATERIAL NO. SEE TABLE	DRAWING NO. SD-87761-007	SHEET NO. 1 OF 1		SIZE A3		
A	REV	THIS DRAWING CONTAINS INFORMATION THAT IS PROPRIETARY TO MOLEX INCORPORATED AND SHOULD NOT BE USED WITHOUT WRITTEN PERMISSION.								

PART NUMBER	CKT SIZE	DIM.A	DIM.B
87761-0006 \triangle_6	4	3.90	2.00
87761-0007 \triangle_6	6	5.90	4.00
87761-0008	12	11.90	10.00



NOTES:

- MATERIAL:
HOUSING: HIGH TEMP THERMOPLASTIC, COLOR: BLACK
PIN: 0.50mm SQ. COPPER ALLOY
- PLATING: 0.384 μ m/154n MIN GOLD IN BOTH CONTACT AREA
BOTH OVER NICKEL OVERALL
- 12 CKT USED FOR ILLUSTRATION ONLY
- PACKED IN POCKET TRAY
- PIN PUSHOUT FORCE: 1KG MIN IN EITHER DIRECTION
- \triangle_6 CKT 4 AND 6 IS CUT FROM CKT 8 AND 12 RESPECTIVELY.
ROUGH EDGES ARE EXPECTED ALONG THE CUTTING EDGES.
- PRODUCT SPECIFICATION: PS-87761-100



RECOMMENDED PCB PATTERN

EC NO: S2004-0112 DRWN:RSHAN 2003/09/24 CHKD:KCLING 2003/09/24 APPR:SKTOH 2003/10/07	QUALITY SYMBOLS ▽ = 0 ▽ = 0	GENERAL TOLERANCES (UNLESS SPECIFIED)		SCALE NTS	DESIGN UNITS METRIC	THIRD ANGLE PROJECTION	REVISE ON CAD ONLY
			mm	INCH	DIMENSION STYLE MM ONLY		TITLE 2MM DUAL ROW, DUAL WAFER VERTICAL THROUGH HOLE HEADER, 4, 6 & 12 CKT
		4 PLACES	± ---	± ---	DRAWN BY RSHAN	DATE 2003/09/05	
		3 PLACES	± ---	± ---	CHECKED BY KCLING	DATE 2003/09/19	
			2 PLACES	± 0.20	± ---		
			1 PLACE	± ---	± ---		
			ANGULAR ± 1 °		APPROVED BY SKTOH		DATE 2003/09/22
			DRAFT WHERE APPLICABLE		MATERIAL NO. SEE TABLE	DOCUMENT NO. SD-87761-018	SHEET NO. 1 OF 1
			MUST REMAIN WITHIN DIMENSIONS		THIS DRAWING CONTAINS INFORMATION THAT IS PROPRIETARY TO MOLEX INCORPORATED AND SHOULD NOT BE USED WITHOUT WRITTEN PERMISSION		