



Chipsmall Limited consists of a professional team with an average of over 10 year of expertise in the distribution of electronic components. Based in Hongkong, we have already established firm and mutual-benefit business relationships with customers from,Europe,America and south Asia,supplying obsolete and hard-to-find components to meet their specific needs.

With the principle of “Quality Parts,Customers Priority,Honest Operation,and Considerate Service”,our business mainly focus on the distribution of electronic components. Line cards we deal with include Microchip,ALPS,ROHM,Xilinx,Pulse,ON,Everlight and Freescale. Main products comprise IC,Modules,Potentiometer,IC Socket,Relay,Connector.Our parts cover such applications as commercial,industrial, and automotives areas.

We are looking forward to setting up business relationship with you and hope to provide you with the best service and solution. Let us make a better world for our industry!



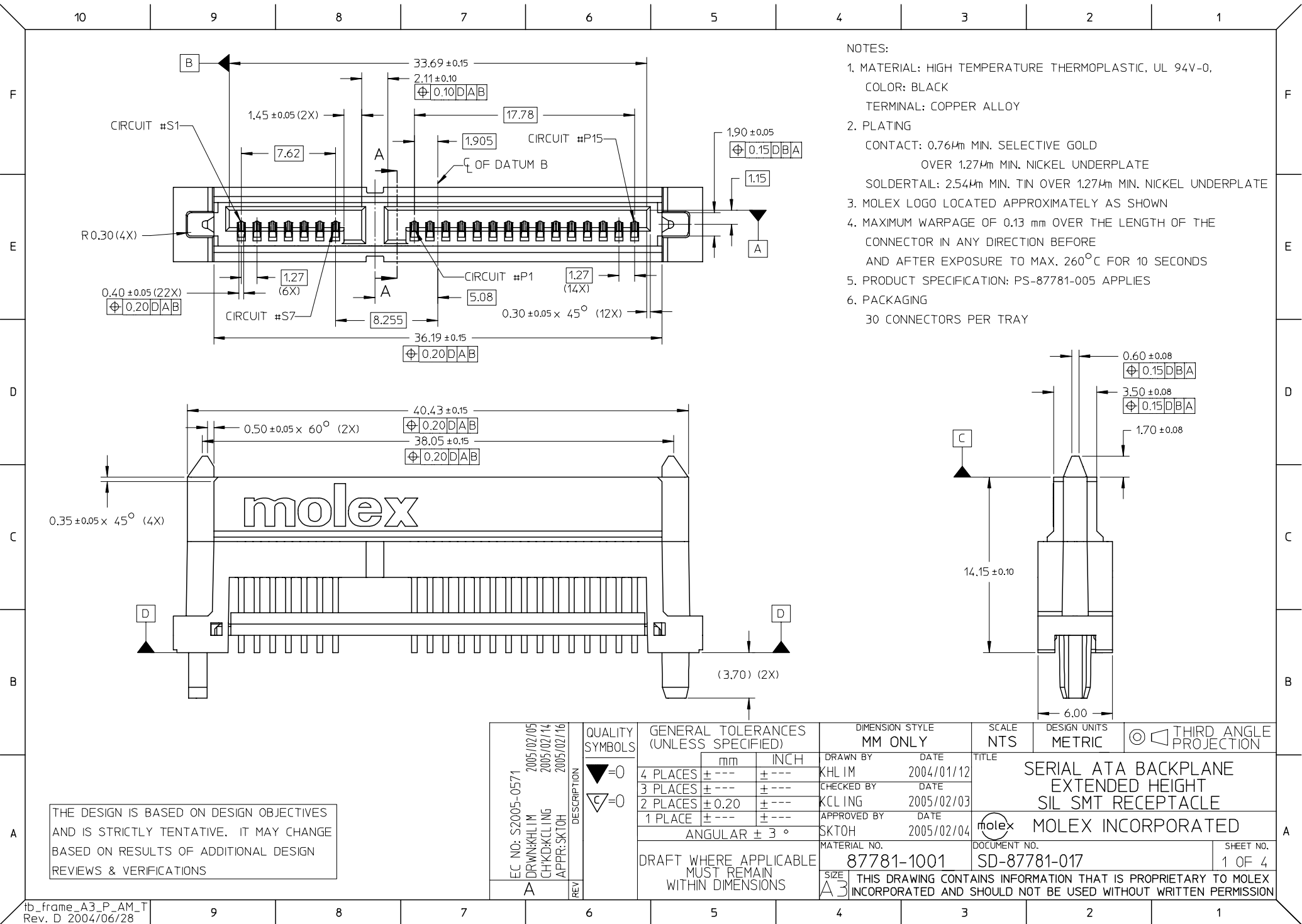
Contact us

Tel: +86-755-8981 8866 Fax: +86-755-8427 6832

Email & Skype: info@chipsmall.com Web: www.chipsmall.com

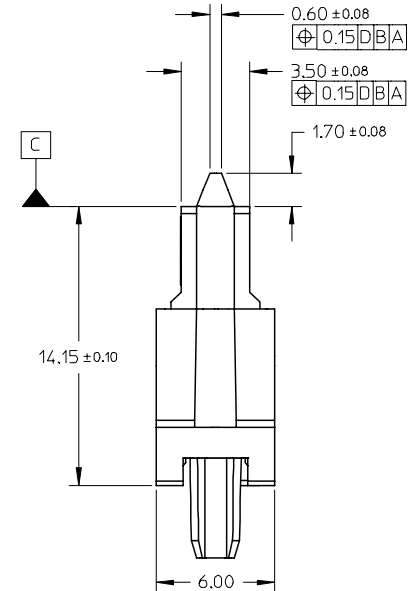
Address: A1208, Overseas Decoration Building, #122 Zhenhua RD., Futian, Shenzhen, China

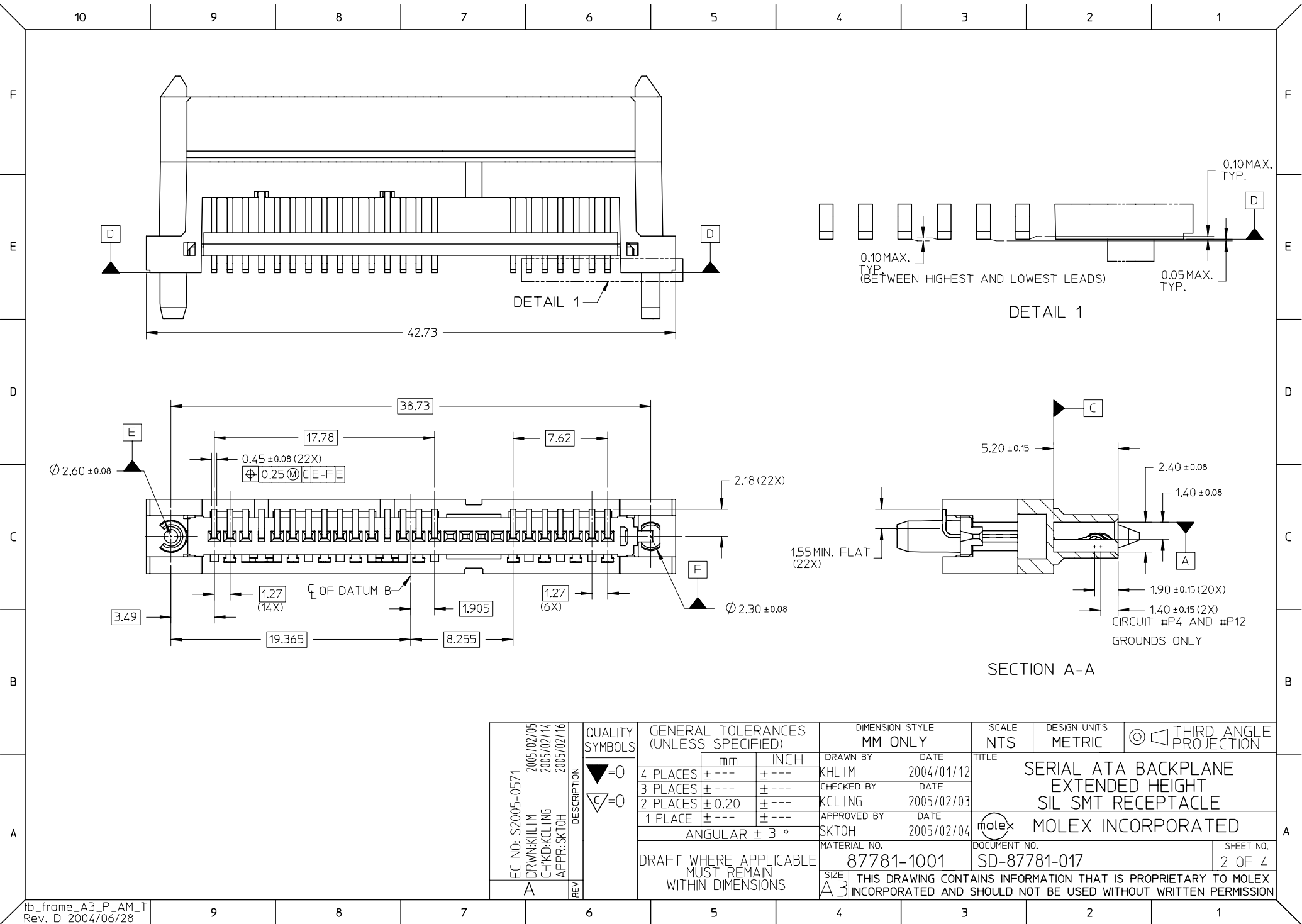


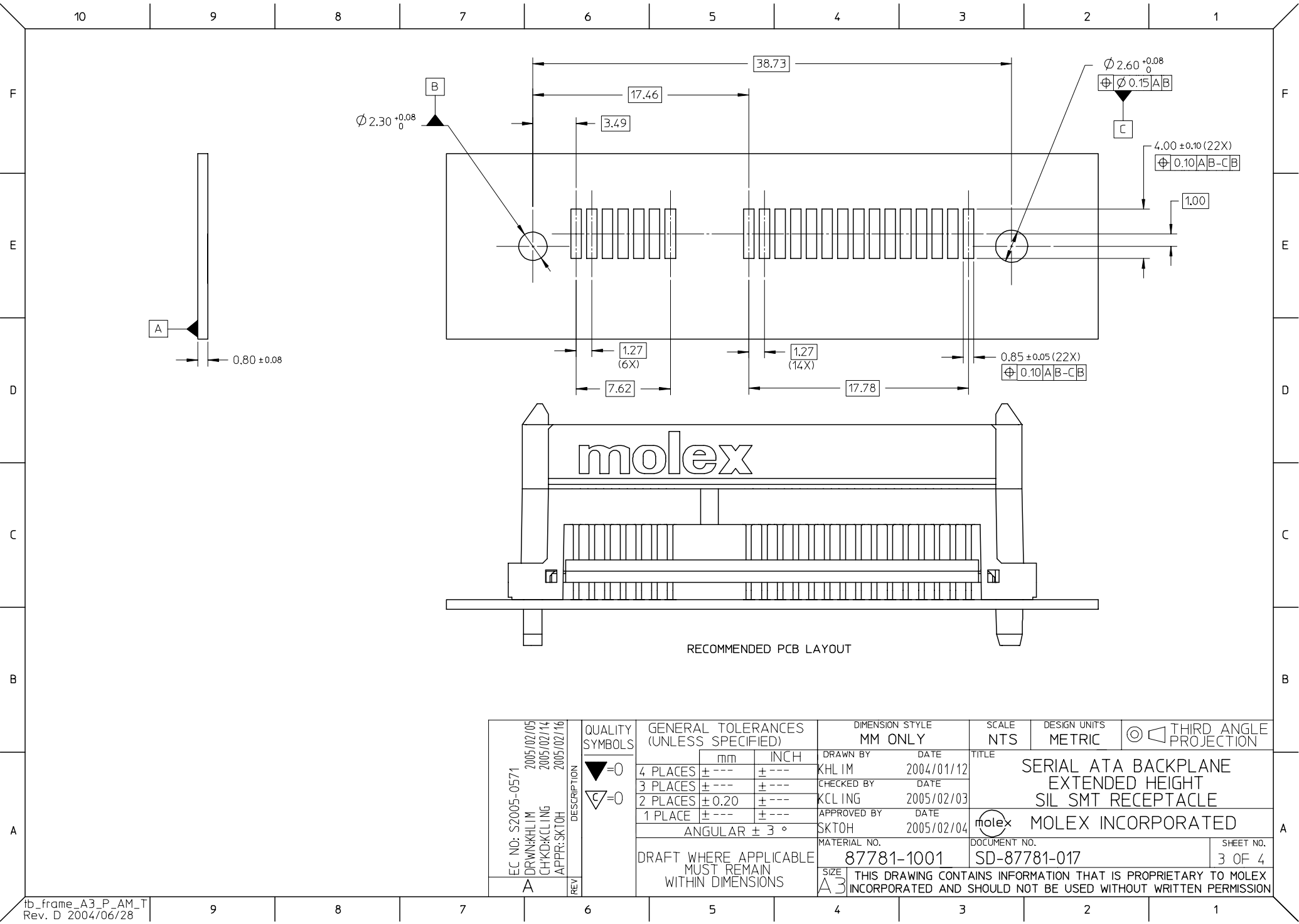


NOTES:

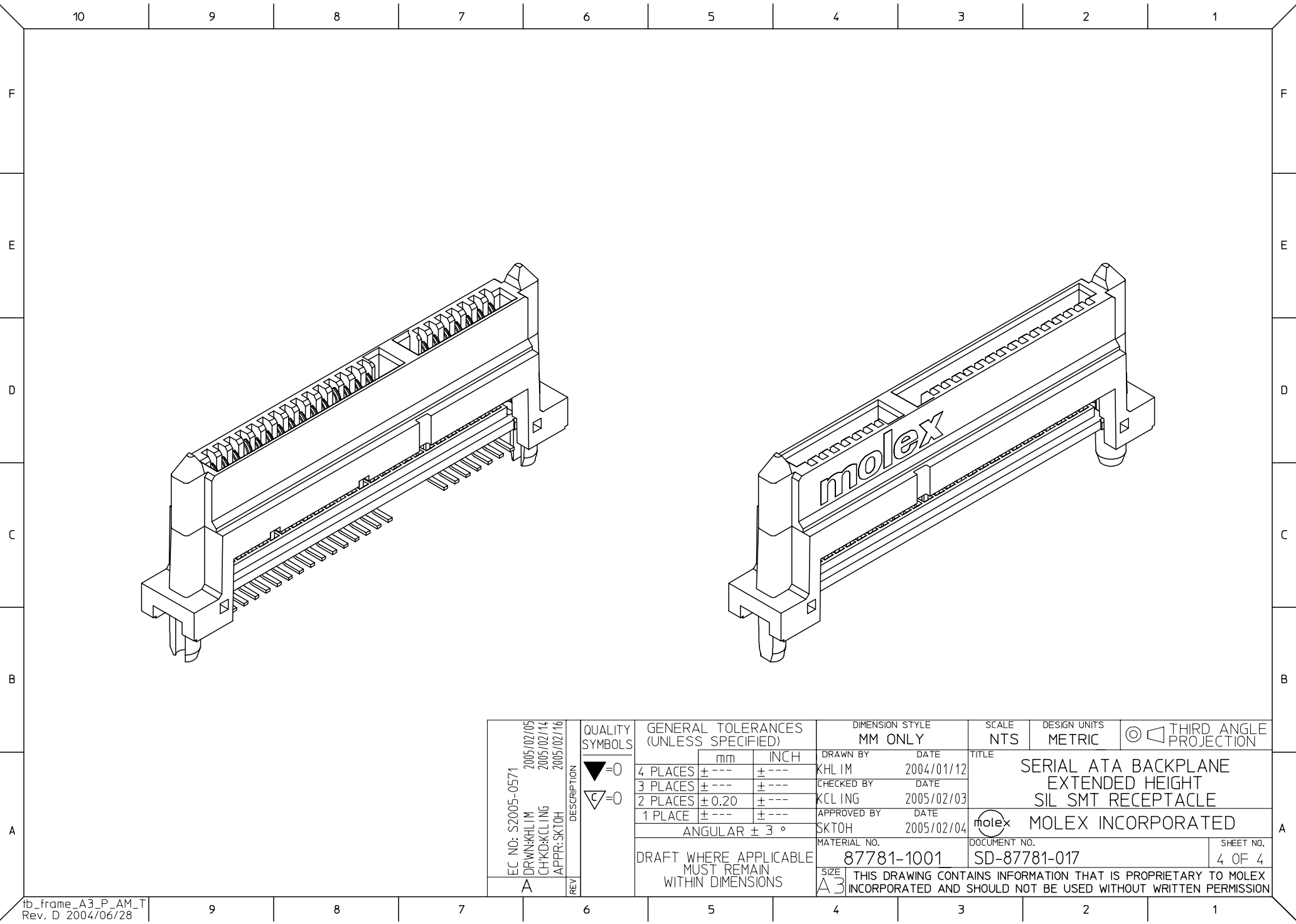
1. MATERIAL: HIGH TEMPERATURE THERMOPLASTIC, UL 94V-0,
COLOR: BLACK
TERMINAL: COPPER ALLOY
2. PLATING
CONTACT: 0.76 μ m MIN. SELECTIVE GOLD
OVER 1.27 μ m MIN. NICKEL UNDERPLATE
SOLDERTAIL: 2.54 μ m MIN. TIN OVER 1.27 μ m MIN. NICKEL UNDERPLATE
3. MOLEX LOGO LOCATED APPROXIMATELY AS SHOWN
4. MAXIMUM WARPAGE OF 0.13 mm OVER THE LENGTH OF THE
CONNECTOR IN ANY DIRECTION BEFORE
AND AFTER EXPOSURE TO MAX. 260°C FOR 10 SECONDS
5. PRODUCT SPECIFICATION: PS-87781-005 APPLIES
6. PACKAGING
30 CONNECTORS PER TRAY







EC NO: S2005-0571 DRWN:KHLIM 2005/02/05 CHKD:KCLING 2005/02/14 APPR:SKTOH 2005/02/16		DESCRIPTION	QUALITY SYMBOLS ▽=0 ▽C=0	GENERAL TOLERANCES (UNLESS SPECIFIED)		DIMENSION STYLE MM ONLY		SCALE NTS	DESIGN UNITS METRIC	THIRD ANGLE PROJECTION		
						DRAWN BY KHLIM		DATE 2004/01/12		TITLE SERIAL ATA BACKPLANE EXTENDED HEIGHT SIL SMT RECEPTACLE		
						CHECKED BY KCLING		DATE 2005/02/03				
						APPROVED BY SKTOH		DATE 2005/02/04				
				ANGULAR ± 3 °		MATERIAL NO. 87781-1001		DOCUMENT NO. SD-87781-017		SHEET NO. 3 OF 4		
A		REV		DRAFT WHERE APPLICABLE MUST REMAIN WITHIN DIMENSIONS		SIZE A3		THIS DRAWING CONTAINS INFORMATION THAT IS PROPRIETARY TO MOLEX INCORPORATED AND SHOULD NOT BE USED WITHOUT WRITTEN PERMISSION				



EC NO: S2005-0571 2005/02/05 DRWN:KHLIM 2005/02/14 CHKD:KCLING 2005/02/16 APPR:SKTOH		DESCRIPTION	QUALITY SYMBOLS ▽=0 ▽C=0	GENERAL TOLERANCES (UNLESS SPECIFIED)		DIMENSION STYLE MM ONLY		SCALE NTS	DESIGN UNITS METRIC	THIRD ANGLE PROJECTION	
						DRAWN BY KHLIM		DATE 2004/01/12	TITLE SERIAL ATA BACKPLANE EXTENDED HEIGHT SIL SMT RECEPTACLE		
				4 PLACES ± --- ± ---		CHECKED BY KCLING		DATE 2005/02/03			
				3 PLACES ± --- ± ---		APPROVED BY SKTOH		DATE 2005/02/04			
				2 PLACES ± 0.20 ± ---		MATERIAL NO. 87781-1001		DOCUMENT NO. SD-87781-017		SHEET NO. 4 OF 4	
				1 PLACE ± --- ± ---		SIZE A3		THIS DRAWING CONTAINS INFORMATION THAT IS PROPRIETARY TO MOLEX INCORPORATED AND SHOULD NOT BE USED WITHOUT WRITTEN PERMISSION			
				ANGULAR ± 3 °							
				DRAFT WHERE APPLICABLE MUST REMAIN WITHIN DIMENSIONS							