



Chipsmall Limited consists of a professional team with an average of over 10 year of expertise in the distribution of electronic components. Based in Hongkong, we have already established firm and mutual-benefit business relationships with customers from,Europe,America and south Asia,supplying obsolete and hard-to-find components to meet their specific needs.

With the principle of “Quality Parts,Customers Priority,Honest Operation,and Considerate Service”,our business mainly focus on the distribution of electronic components. Line cards we deal with include Microchip,ALPS,ROHM,Xilinx,Pulse,ON,Everlight and Freescale. Main products comprise IC,Modules,Potentiometer,IC Socket,Relay,Connector.Our parts cover such applications as commercial,industrial, and automotives areas.

We are looking forward to setting up business relationship with you and hope to provide you with the best service and solution. Let us make a better world for our industry!



Contact us

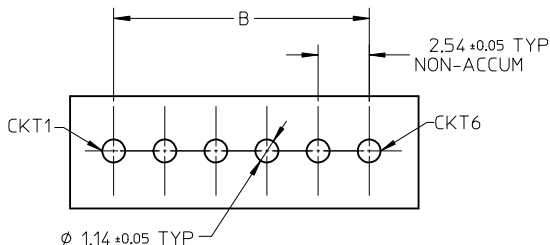
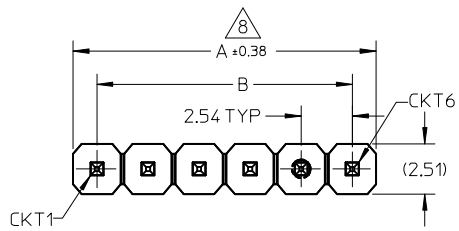
Tel: +86-755-8981 8866 Fax: +86-755-8427 6832

Email & Skype: info@chipsmall.com Web: www.chipsmall.com

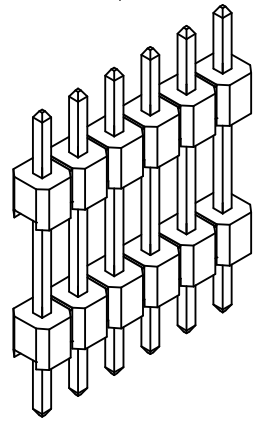
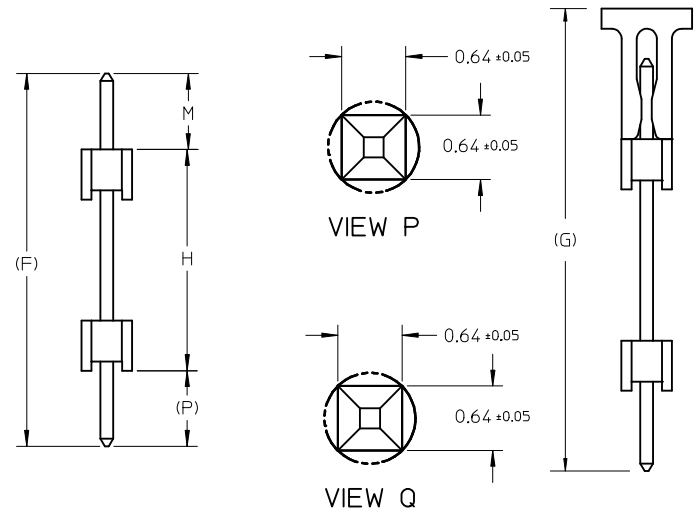
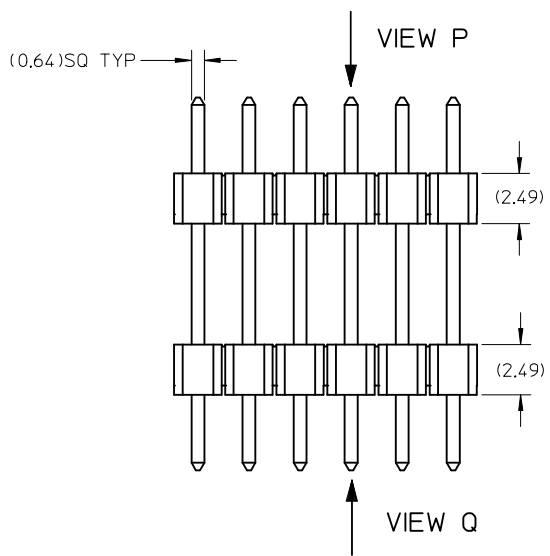
Address: A1208, Overseas Decoration Building, #122 Zhenhua RD., Futian, Shenzhen, China



- NOTES:
1. MATERIAL:
HOUSING: NYLON, GLASS FILLED, UL94V-0,
COLOR: BLACK
TERMINAL: 0.64MM SQ PIN, COPPER ALLOY
 2. PLATING TYPE:
(1) : GOLD FLASH OVER
1.254μm MIN. NICKEL OVERALL.
(2) : 0.05 μm MIN. GOLD PLATE ON CONTACT AND
2.50 μm MIN. TIN ON SOLDER TAIL OVER
1.25 μm MIN. NICKEL OVERALL.
(3) : 0.38 μm MIN. GOLD PLATE ON CONTACT AND
2.00 μm MIN. TIN ON SOLDER TAIL OVER
1.25 μm MIN. NICKEL OVERALL.
(4) : 0.75 μm MIN. GOLD PLATE ON CONTACT AND
2.00 μm MIN. TIN ON SOLDER TAIL OVER
1.25 μm MIN. NICKEL OVERALL.
(5) : 2.50 μm MIN. TIN OVER
1.25 μm MIN. NICKEL OVERALL.
(6) : 0.75 μm MIN. GOLD PLATE ON CONTACT AND
SOLDER TAIL OVER 1.25 μm MIN. NICKEL OVERALL.
 3. THE ABOVE 6 CKT IS FOR ILLUSTRATION PURPOSE ONLY.
 4. PACKAGING TYPE: SEE TABLE
 5. RECOMMENDED PCB THICKNESS 1.60MM.
 6. PRODUCT SPECIFICATION: PS-87920-019
 7. WAFER TO BE FLAT WITHIN 0.003mm/mm
 8. IRREGULAR CIRCUIT CUTOFF WITHIN BREAKAWAY SECTION IS PERMISSIBLE. CUTTING OR CHIPPING OF THE MAIN BODY IS NOT ACCEPTABLE.
 9. PARTS ARE NOT STACKABLE ON 2.54 CENTER
 10. PACKAGING SPECIFICATION: SEE TABLE



RECOMMENDED PCB HOLE LAYOUT



VOID -0200,-0600,-0801 EC NO: S2017-0349 DRWN:CGOH 2016/12/09 CHKD:FC500 2016/12/20 APPR:KHLIM 2017/01/03	DESCRIPTION	QUALITY SYMBOLS	GENERAL TOLERANCES (UNLESS SPECIFIED)		DIMENSION STYLE		SCALE	DESIGN UNITS	THIRD ANGLE PROJECTION	
		$\nabla_A = 0$ $\nabla_C = 0$ $\nabla_P = 0$	mm	INCH	MM ONLY		NTS	METRIC		
B	REV	4 PLACES	± ---	± ---	DRAWN BY	DATE	TITLE CUSTOM HEADER 2.54MM PITCH SINGLE ROW DUAL WAFER HEADER, T/H			
		3 PLACES	± ---	± ---	SKLIM01	2006/03/10				
		2 PLACES	± 0.2	± ---	CHECKED BY	DATE	DOCUMENT NO. SD-87937-007			
		1 PLACE	± ---	± ---	PATEY	2006/03/20				
		0 PLACE	±	±	APPROVED BY	DATE	SHEET NO. 1 OF 2			
					MLONG	2010/01/14				
			ANGULAR ± 3 °		MATERIAL NO.		THIS DRAWING CONTAINS INFORMATION THAT IS PROPRIETARY TO MOLEX INCORPORATED AND SHOULD NOT BE USED WITHOUT WRITTEN PERMISSION			
			DRAFT WHERE APPLICABLE MUST REMAIN WITHIN DIMENSIONS		SEE TABLE					

10 9 8 7 6 5 4 3 2 1

PART NUMBERS	CKT SIZE	VOID POSITION	DIMENSION							PLATING OPTION	PACKAGING TYPE	PACKAGING SPECIFICATION
			A	B	MATING ENG	STACKER HEIGHT	SOLDER TAIL	WITH CAP				
			M	H	(P)	(F)	(G)					

87937-0202	2	----	5.08	2.54	3.50	25.00	3.50	32.00	----	5	TRAY PACKED	PK-89990-489
87937-0203	2	----	5.08	2.54	2.45	15.60	2.45	20.50	----	5	BULK PACKED	PK-89990-491
87937-0302	3	----	7.62	5.08	11.70	8.50	11.70	31.90	----	5	TRAY PACKED	PK-89990-489
87937-0306	3	----	7.62	5.08	10.50	20.80	3.00	34.30	35.50	3	TUBE PACKED	PK-89990-***
		----							----			
87937-0602	6	----	15.24	12.70	3.00	8.90	3.00	14.90	----	5	TRAY PACKED	PK-89990-489
87937-0800	8	----	20.32	17.78	9.00	12.00	3.00	24.00	----	5	TRAY PACKED	PK-89990-489
		----							----			
87937-1000	10	----	25.40	22.86	8.15	25.00	3.05	36.20	----	3	TRAY PACKED	PK-89990-489
87937-1600	16	----	40.64	38.10	12.70	17.63	5.99	36.32	----	3	BULK PACKED	PK-89990-491
87937-1601	16	----	40.64	38.10	11.94	19.05	2.79	33.78	----	3	BULK PACKED	PK-89990-491
87937-1602	16	----	40.64	38.10	2.14	8.70	2.16	13.00	----	5	BULK PACKED	PK-89990-491

D

C

B

A

VOID -0200,-0600,-0801 EC NO: S2017-0349 DRWN:CGOH CHKD:FC00 APPR:KHLIM	2016/12/09 2016/12/20 2017/01/03	DESCRIPTION REV	QUALITY SYMBOLS	GENERAL TOLERANCES (UNLESS SPECIFIED)	DIMENSION STYLE	SCALE	DESIGN UNITS	THIRD ANGLE PROJECTION			
			$\nabla_A = 0$ $\nabla_F = 0$ $\nabla_B = 0$	mm INCH 4 PLACES ± --- ± --- 3 PLACES ± --- ± --- 2 PLACES ± 0.2 ± --- 1 PLACE ± --- ± --- 0 PLACE ± ±	MM ONLY	NTS	METRIC	DRAWN BY: SKLIM01 DATE: 2006/03/10 CHECKED BY: PATEY DATE: 2006/03/20 APPROVED BY: MLONG DATE: 2010/01/14	TITLE CUSTOM HEADER 2.54MM PITCH SINGLE ROW DUAL WAFER HEADER, T/H		
			ANGULAR ± 3 ° DRAFT WHERE APPLICABLE MUST REMAIN WITHIN DIMENSIONS	SEE TABLE	MATERIAL NO.	DOCUMENT NO.	SHEET NO.				
			SIZE: A3 THIS DRAWING CONTAINS INFORMATION THAT IS PROPRIETARY TO MOLEX INCORPORATED AND SHOULD NOT BE USED WITHOUT WRITTEN PERMISSION			SD-87937-007	2 OF 2				

9 8 7 6 5 4 3 2 1