



Chipsmall Limited consists of a professional team with an average of over 10 year of expertise in the distribution of electronic components. Based in Hongkong, we have already established firm and mutual-benefit business relationships with customers from,Europe,America and south Asia,supplying obsolete and hard-to-find components to meet their specific needs.

With the principle of “Quality Parts,Customers Priority,Honest Operation,and Considerate Service”,our business mainly focus on the distribution of electronic components. Line cards we deal with include Microchip,ALPS,ROHM,Xilinx,Pulse,ON,Everlight and Freescale. Main products comprise IC,Modules,Potentiometer,IC Socket,Relay,Connector.Our parts cover such applications as commercial,industrial, and automotives areas.

We are looking forward to setting up business relationship with you and hope to provide you with the best service and solution. Let us make a better world for our industry!



Contact us

Tel: +86-755-8981 8866 Fax: +86-755-8427 6832

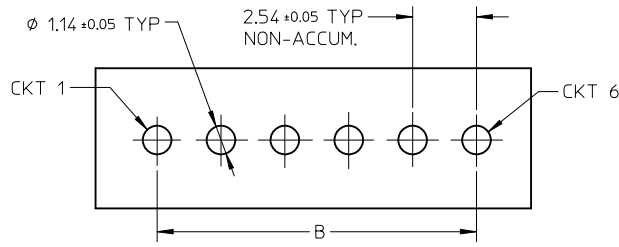
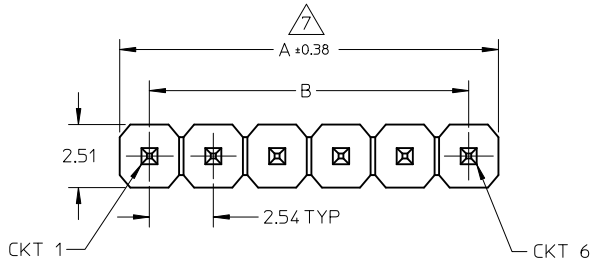
Email & Skype: info@chipsmall.com Web: www.chipsmall.com

Address: A1208, Overseas Decoration Building, #122 Zhenhua RD., Futian, Shenzhen, China

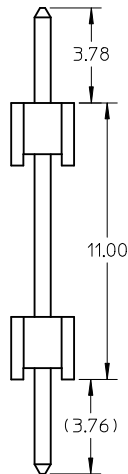
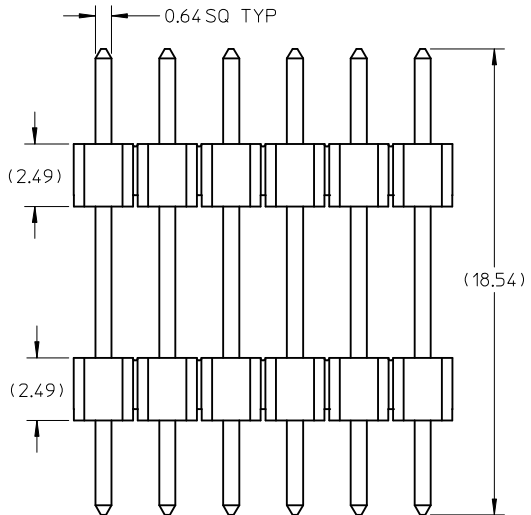


10 9 8 7 6 5 4 3 2 1

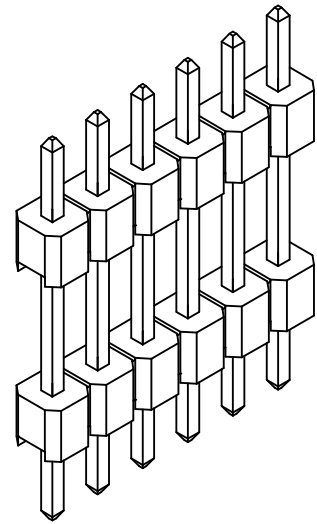
PART NO IN TRAY	CKT SIZE	DIMENSION	
		A	B
87937-0106	1	2.54	-----
87937-0206	2	5.08	2.54
87937-0406	4	10.16	7.62
87937-0502	5	12.70	10.16
87937-0802	8	20.32	17.78
87937-1206	12	30.48	27.94
87937-1406	14	35.56	33.02



RECOMMENDED P.C.B HOLE LAYOUT



- NOTES:
- MATERIAL:
HOUSING: 30% G.F. POLYESTER, UL94V-0,
COLOR: BLACK
TERMINAL: COPPER ALLOY
 - PLATING TYPE:
(6) : 100 MICRO INCHES MIN. TIN IN SELECTED AREA OVER
50 MICRO INCHES MIN. NICKEL OVERALL.
 - PIN PUSHOUT FORCE: 1KG MIN IN EITHER DIRECTION
 - PACKAGING SPECIFICATION: PK-89990-489
 - THE ABOVE 6 CKT IS FOR ILLUSTRATION PURPOSE ONLY.
 - PART TO BE PACK IN TRAY.
 - IRREGULAR CIRCUIT CUTOFF WITHIN BREAKAWAY SECTION IS PERMISSIBLE. CUTTING OR CHIPPING OF THE MAIN BODY IS NOT ACCEPTABLE.



0145-CN +879370206/1406 EC NO: S2012-0562 DRWN:ATSEE 2012/01/20 CHKD:SKANG 2012/03/20 APPR:MLONG 2012/03/20	QUALITY SYMBOLS	GENERAL TOLERANCES (UNLESS SPECIFIED)		DIMENSION STYLE MM ONLY		SCALE NTS	DESIGN UNITS METRIC	THIRD ANGLE PROJECTION	
	$F_A=0$	4 PLACES	mm	INCH	DRAWN BY KCHO	DATE 2005/05/25	TITLE CUSTOM HEADER		
	$F_B=0$	3 PLACES	± ---	± ---	CHECKED BY BOKOK	DATE 2005/06/13	C-GRID SINGLE ROW HEADER		
	$F_C=0$	2 PLACES	± 0.20	± ---	APPROVED BY PTLIM	DATE 2005/06/13	DUAL WAFER TROUGH HOLE		
		1 PLACE	± ---	± ---	MATERIAL NO. SEE TABLE		MOLEX INCORPORATED		
		ANGULAR ± 3°		DRAFT WHERE APPLICABLE MUST REMAIN WITHIN DIMENSIONS		DOCUMENT NO. SD-87937-002		SHEET NO. 1 OF 1	
		THIS DRAWING CONTAINS INFORMATION THAT IS PROPRIETARY TO MOLEX INCORPORATED AND SHOULD NOT BE USED WITHOUT WRITTEN PERMISSION							

9 8 7 6 5 4 3 2 1