



Chipsmall Limited consists of a professional team with an average of over 10 year of expertise in the distribution of electronic components. Based in Hongkong, we have already established firm and mutual-benefit business relationships with customers from,Europe,America and south Asia,supplying obsolete and hard-to-find components to meet their specific needs.

With the principle of “Quality Parts,Customers Priority,Honest Operation,and Considerate Service”,our business mainly focus on the distribution of electronic components. Line cards we deal with include Microchip,ALPS,ROHM,Xilinx,Pulse,ON,Everlight and Freescale. Main products comprise IC,Modules,Potentiometer,IC Socket,Relay,Connector.Our parts cover such applications as commercial,industrial, and automotives areas.

We are looking forward to setting up business relationship with you and hope to provide you with the best service and solution. Let us make a better world for our industry!



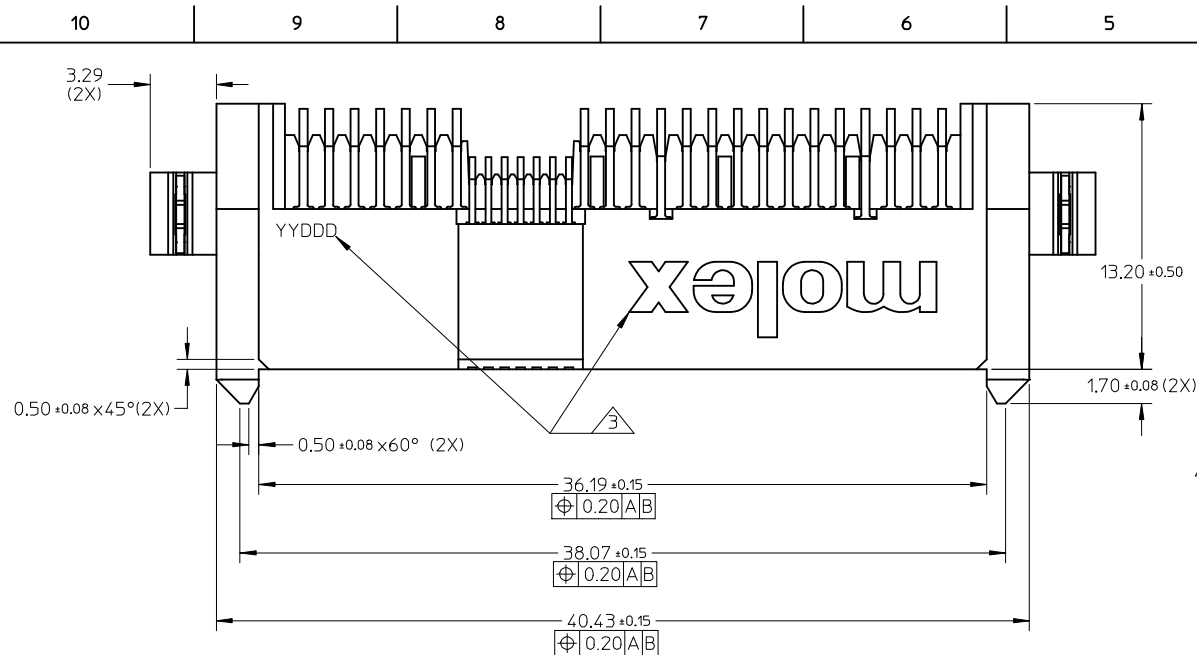
Contact us

Tel: +86-755-8981 8866 Fax: +86-755-8427 6832

Email & Skype: info@chipsmall.com Web: www.chipsmall.com

Address: A1208, Overseas Decoration Building, #122 Zhenhua RD., Futian, Shenzhen, China





NOTES:

1. MATERIAL

HOUSING: NYLON 9T, GLASS FILLED, UL 94V-0, BLACK

CAP: LCP, GLASS FILLED, UL 94V-0, BLACK

TERMINAL: COPPER ALLOY

FORK LOCK/BLADE: COPPER ALLOY

2. PLATING:

TERMINAL:

CONTACT: 0.764μm MIN. SELECTIVE GOLD OVER 1.27μm MIN. NICKEL UNDERPLATE

SOLDERTAIL: 2.544μm MIN. TIN OVER 1.27μm MIN. NICKEL UNDERPLATE

FORK LOCK/BLADE:

2.544μm MIN. TIN OVER 1.27μm MIN. NICKEL UNDERPLATE

3. MOLEX LOGO AND DATE CODE LOCATED APPROXIMATELY AS SHOWN.

4. NON FUNCTIONAL CORE HOLE MAY VARY.

5. THIS PRODUCT IS COMPLIANT TO RoHS DIRECTIVE WITH THE FOLLOWING BANNED SUBSTANCES - LEAD, MERCURY, CADMIUM, HEXAVALENT CHROMIUM, POLYBROMINATED BIPHENYLS AND POLYBROMINATED DIPHENYL ETHERS.

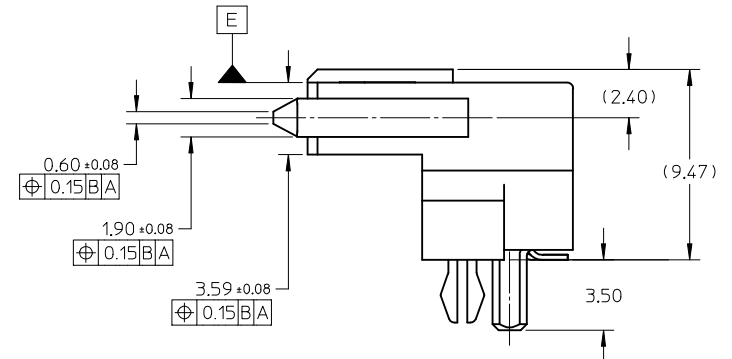
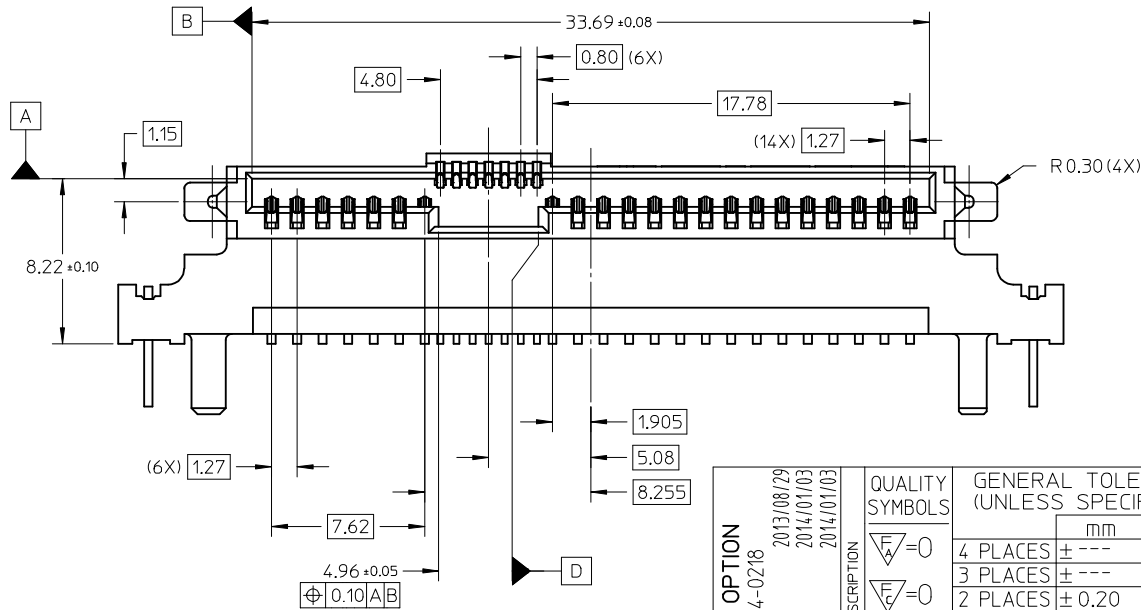
6. PRODUCT SPECIFICATION PS-87945-034 APPLIES.



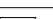


7. MATES WITH : SFF-8482 PLUG

SATA PLUG SERIES 87679, 87703 AND 87799

8. PACKAGING SPECIFICATION : TRAY : PK-87945-001

TAPE & REEL : PK-87945-002



ADD CAP OPTION EC NO: S2014-0218 DRWS:SKANG CHKD:MLONG APPR:MLONG		2013/08/29 2014/01/03 2014/01/03	DESCRIPTION	QUALITY SYMBOLS	GENERAL TOLERANCES (UNLESS SPECIFIED)		DIMENSION STYLE		SCALE	DESIGN UNITS	 THIRD ANGLE PROJECTION
							MM ONLY		NTS	METRIC	
				 =0		mm	INCH	DRAWN BY	DATE	SERIAL ATTACH SCSI RECEPTACLE, RIGHT-ANGLE SMT, 7.07MM HEIGHT molex	
				 =0	4 PLACES	± ---	± ---	KCHO	2005/02/22		
				 =0	3 PLACES	± ---	± ---	CHECKED BY	DATE		
					2 PLACES	± 0.20	± ---	DKOH	2005/03/23		
				 =0	1 PLACE	± ---	± ---	APPROVED BY	DATE		
					0 PLACE	±	±	SKTOH	2005/03/23		
					ANGULAR ± 3 °		MATERIAL NO.		DOCUMENT NO.		SHEET NO.
					DRAFT WHERE APPLICABLE MUST REMAIN WITHIN DIMENSIONS		SEE TABLE		SD-87945-001		1 OF 6
			REV				SIZE	THIS DRAWING CONTAINS INFORMATION THAT IS PROPRIETARY TO MOLEX INCORPORATED AND SHOULD NOT BE USED WITHOUT WRITTEN PERMISSION			

10 9 8 7 6 5 4 3 2 1

F

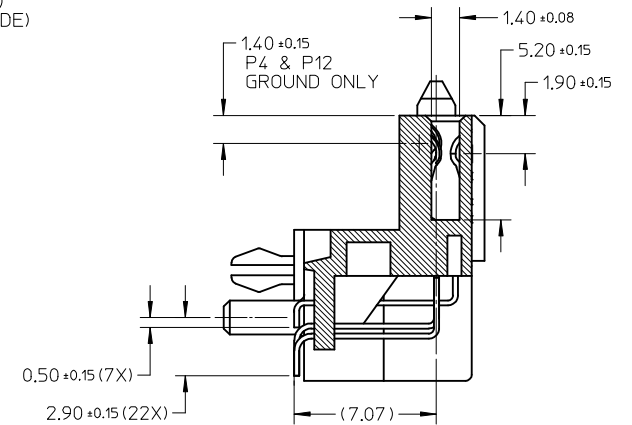
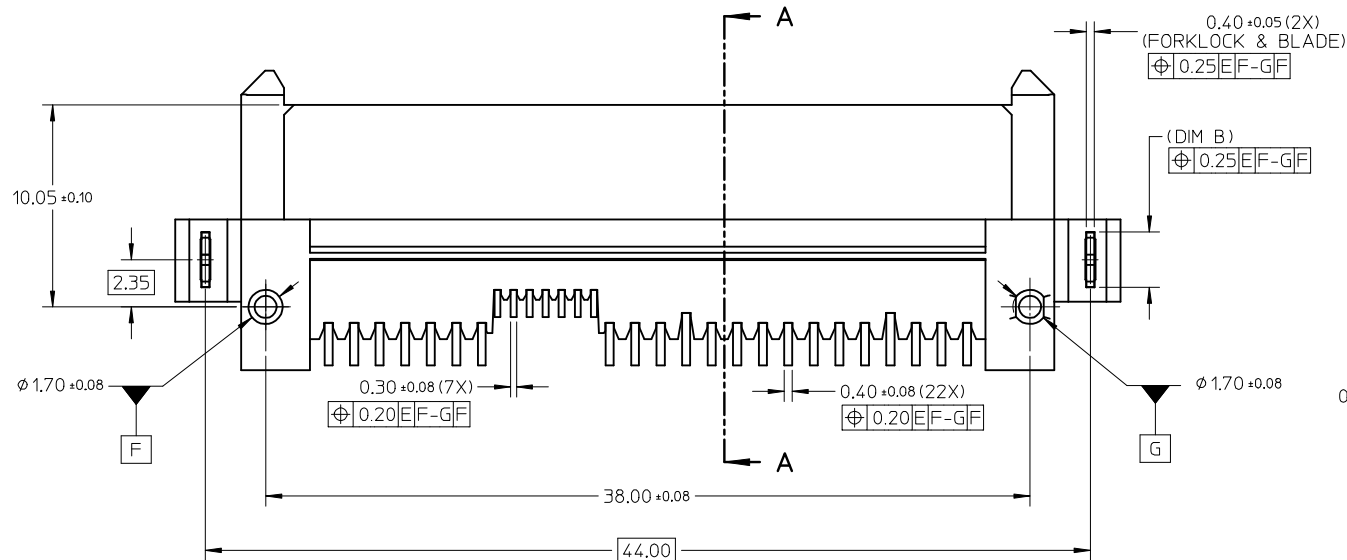
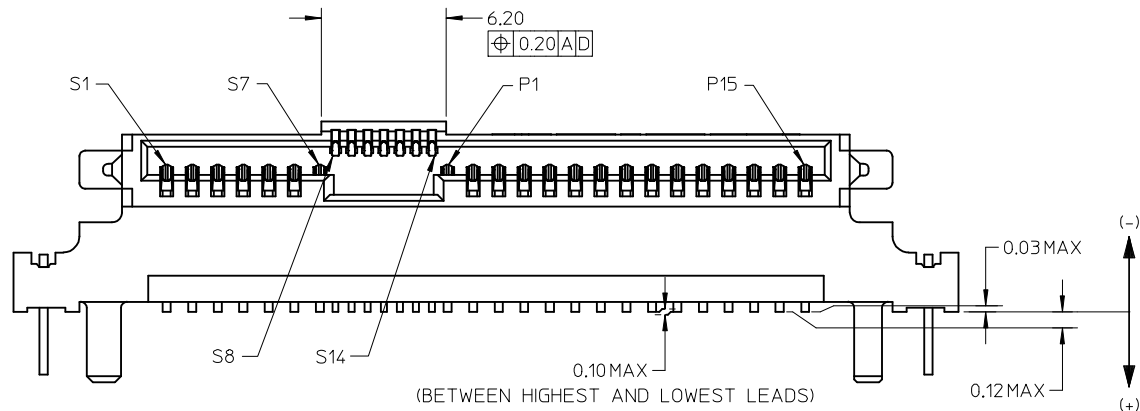
E

D

C

B

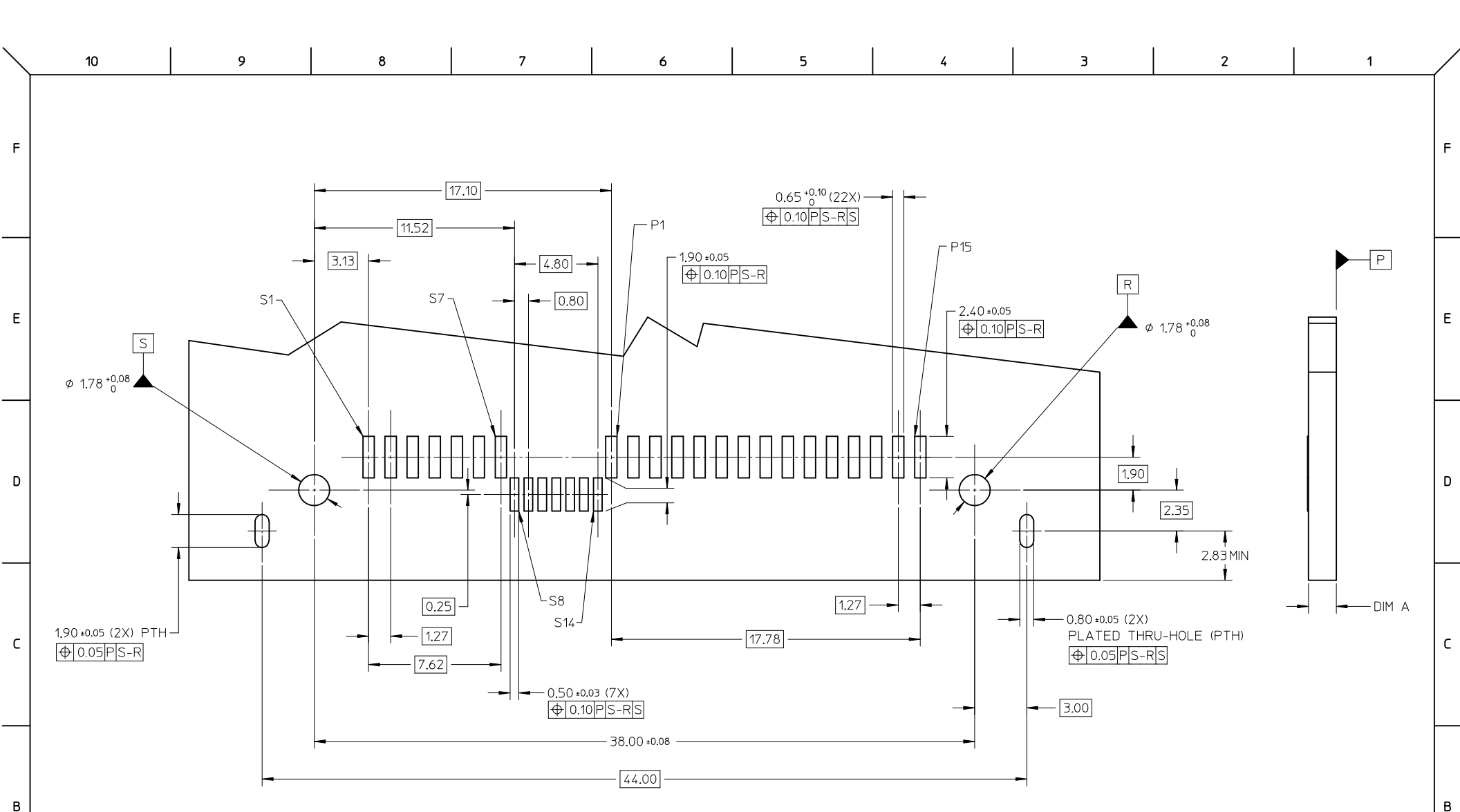
A



SECTION A-A

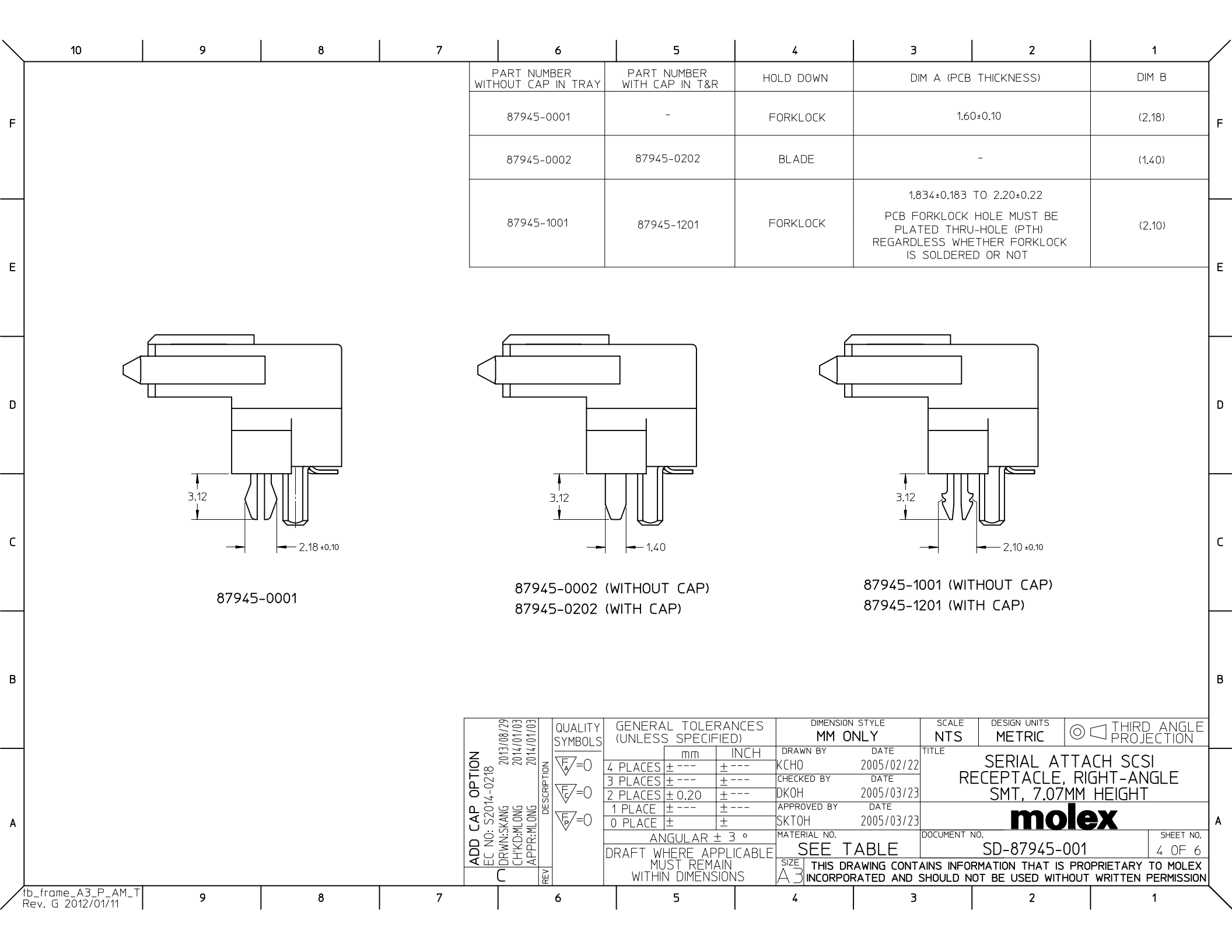
ADD CAP OPTION EC NO: S2014-0218 DRWNSKANG CHKD:MLONG APPR:MLONG	2013/08/29 2014/01/03 2014/01/03	DESCRIPTION	QUALITY SYMBOLS <div><div><div>▽_A</div><div>▽_B</div><div>▽_P</div></div><div><div>0</div><div>0</div><div>0</div></div></div>	GENERAL TOLERANCES (UNLESS SPECIFIED)		DIMENSION STYLE MM ONLY		SCALE NTS	DESIGN UNITS METRIC	<div><div></div><div></div></div> THIRD ANGLE PROJECTION	
						DRAWN BY KCHO	DATE 2005/02/22	TITLE SERIAL ATTACH SCSI RECEPTACLE, RIGHT-ANGLE SMT, 7.07MM HEIGHT molex			
				4 PLACES	± ---	± ---	CHECKED BY DKOH				DATE 2005/03/23
				3 PLACES	± ---	± ---	APPROVED BY SKTOH				DATE 2005/03/23
				2 PLACES	± 0.20	± ---	MATERIAL NO.				DOCUMENT NO.
C	REV			1 PLACE	± ---	± ---	SEE TABLE		SD-87945-001	2 OF 6	
				0 PLACE	±	±	THIS DRAWING CONTAINS INFORMATION THAT IS PROPRIETARY TO MOLEX INCORPORATED AND SHOULD NOT BE USED WITHOUT WRITTEN PERMISSION				
				ANGULAR ± 3 °							
				DRAFT WHERE APPLICABLE MUST REMAIN WITHIN DIMENSIONS							

9 8 7 6 5 4 3 2 1



RECOMMENDED PCB LAYOUT

ADD CAP OPTION EC NO: S2014-0218 DRWN:SKANG CHKD:MLONG APPR:MLONG C	2013/08/29 2014/01/03 2014/01/03	DESCRIPTION REV	QUALITY SYMBOLS <div>F_A=0</div> <div>F_G=0</div> <div>F_P=0</div>	GENERAL TOLERANCES (UNLESS SPECIFIED)			DIMENSION STYLE MM ONLY		SCALE NTS	DESIGN UNITS METRIC	THIRD ANGLE PROJECTION <div><div></div><div></div></div>				
					mm	INCH	DRAWN BY KCHO	DATE 2005/02/22	TITLE SERIAL ATTACH SCSI RECEPTACLE, RIGHT-ANGLE SMT, 7.07MM HEIGHT <div>molex</div>						
				4 PLACES	± ---	± ---	CHECKED BY DKOH	DATE 2005/03/23							
				3 PLACES	± ---	± ---	APPROVED BY SKTOH	DATE 2005/03/23							
				2 PLACES	± 0.20	± ---	MATERIAL NO.			DOCUMENT NO.	SHEET NO.				
				1 PLACE	± ---	± ---	SEE TABLE			SD-87945-001		3 OF 6			
				0 PLACE	±	±	SIZE A3			THIS DRAWING CONTAINS INFORMATION THAT IS PROPRIETARY TO MOLEX INCORPORATED AND SHOULD NOT BE USED WITHOUT WRITTEN PERMISSION					
				ANGULAR ± 3 °											
				DRAFT WHERE APPLICABLE MUST REMAIN WITHIN DIMENSIONS											



10 9 8 7 6 5 4 3 2 1

F F

E E

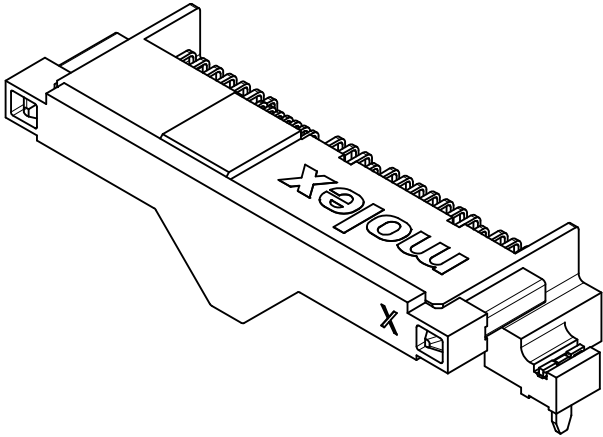
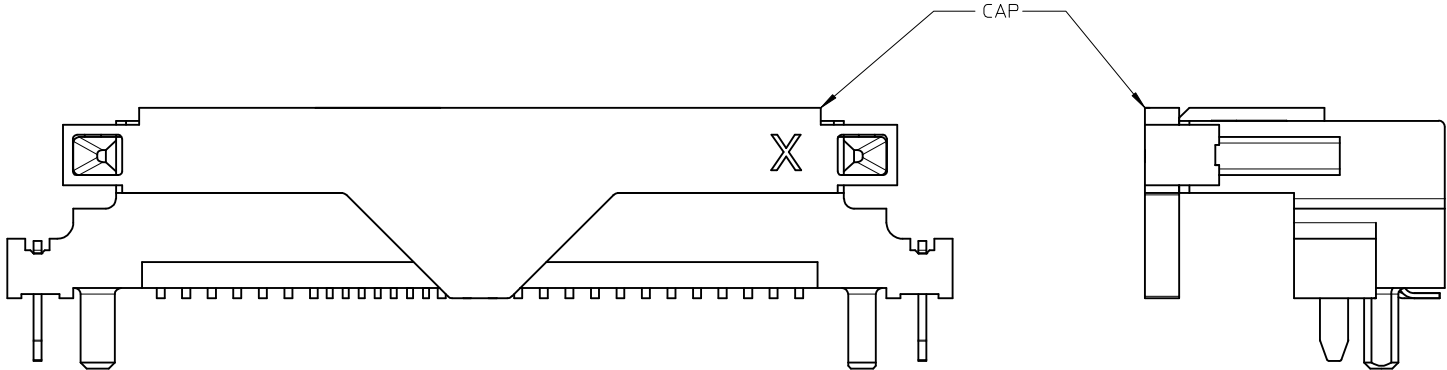
D D

C C

B B

A A

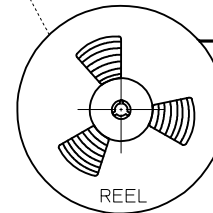
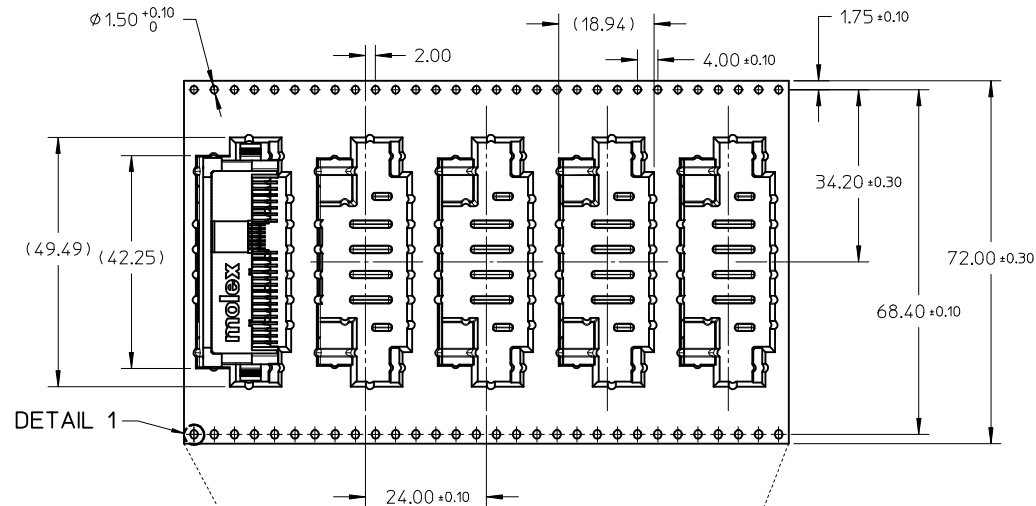
ILLUSTRATION FOR PART WITH CAP



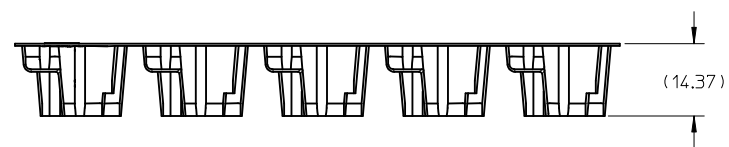
ADD CAP OPTION EC NO: S2014-0218 2013/08/29 DRWNSKANG 2014/01/03 CHKD:MLONG 2014/01/03 APPR:MLONG REV	DESCRIPTION	QUALITY SYMBOLS	GENERAL TOLERANCES (UNLESS SPECIFIED)				DIMENSION STYLE MM ONLY		SCALE NTS	DESIGN UNITS METRIC	THIRD ANGLE PROJECTION
		$\nabla_A=0$ $\nabla_E=0$ $\nabla_F=0$		mm	INCH	DRAWN BY	DATE	TITLE			
			4 PLACES	± ---	± ---	KCHO	2005/02/22				
			3 PLACES	± ---	± ---	CHECKED BY	DATE				
			2 PLACES	± 0.20	± ---	DKOH	2005/03/23				
			1 PLACE	± ---	± ---	APPROVED BY	DATE				
		0 PLACE	±	±	SKTOH	2005/03/23	SERIAL ATTACH SCSI RECEPTACLE, RIGHT-ANGLE SMT, 7.07MM HEIGHT molex				
		ANGULAR ± 3 °				MATERIAL NO.		DOCUMENT NO.		SHEET NO.	
		DRAFT WHERE APPLICABLE MUST REMAIN WITHIN DIMENSIONS				SEE TABLE		SD-87945-001		5 OF 6	
						SIZE A3		THIS DRAWING CONTAINS INFORMATION THAT IS PROPRIETARY TO MOLEX INCORPORATED AND SHOULD NOT BE USED WITHOUT WRITTEN PERMISSION			

10 9 8 7 6 5 4 3 2 1

PART WITH CAP IN T&R

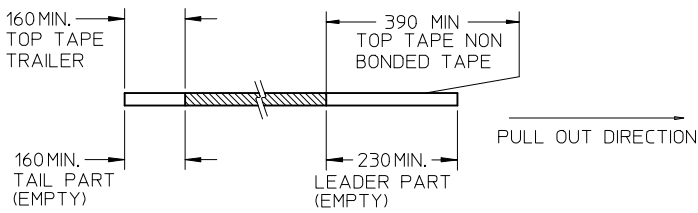


PULL OUT DIRECTION

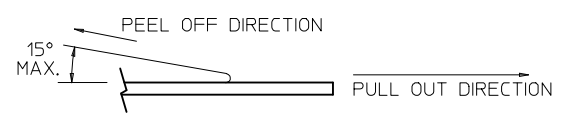


NOTES:

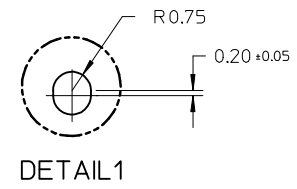
1. LEADER AND TRAILER TAPE



2. PEELING OFF FORCE OF THE TOP TAPE: 20 - 80gf.
(PEELING DIRECTION AS SHOWN IN FOLLOWING FIGURE)



3. TAPE AND REEL SPECIFICATION IS AS PER EIA-481.
4. TAPE AND REEL QUANTITY : 150PCS
5. THE TAPE IS TREATED FOR ANTI-STATIC.



ADD CAP OPTION EC NO: S2014-0218 DRWN:SKANG CHKD:MLONG APPR:MLONG	2013/08/29 2014/01/03 2014/01/03	DESCRIPTION	QUALITY SYMBOLS	GENERAL TOLERANCES (UNLESS SPECIFIED)			DIMENSION STYLE MM ONLY		SCALE NTS	DESIGN UNITS METRIC	THIRD ANGLE PROJECTION		
					mm	INCH	DRAWN BY KCHO	DATE 2005/02/22	TITLE SERIAL ATTACH SCSI RECEPTACLE, RIGHT-ANGLE SMT, 7.07MM HEIGHT molex				
				4 PLACES	± ---	± ---	CHECKED BY DKOH	DATE 2005/03/23					
				3 PLACES	± ---	± ---	APPROVED BY SKTOH	DATE 2005/03/23					
				2 PLACES	± 0.20	± ---	DOCUMENT NO. SD-87945-001					SHEET NO. 6 OF 6	
				1 PLACE	± ---	± ---							
				0 PLACE	±	±							
ANGULAR ± 3 °			MATERIAL NO.										
DRAFT WHERE APPLICABLE MUST REMAIN WITHIN DIMENSIONS			SEE TABLE										
REV	C						SIZE A3	THIS DRAWING CONTAINS INFORMATION THAT IS PROPRIETARY TO MOLEX INCORPORATED AND SHOULD NOT BE USED WITHOUT WRITTEN PERMISSION					