



Chipsmall Limited consists of a professional team with an average of over 10 year of expertise in the distribution of electronic components. Based in Hongkong, we have already established firm and mutual-benefit business relationships with customers from,Europe,America and south Asia,supplying obsolete and hard-to-find components to meet their specific needs.

With the principle of “Quality Parts,Customers Priority,Honest Operation,and Considerate Service”,our business mainly focus on the distribution of electronic components. Line cards we deal with include Microchip,ALPS,ROHM,Xilinx,Pulse,ON,Everlight and Freescale. Main products comprise IC,Modules,Potentiometer,IC Socket,Relay,Connector.Our parts cover such applications as commercial,industrial, and automotives areas.

We are looking forward to setting up business relationship with you and hope to provide you with the best service and solution. Let us make a better world for our industry!



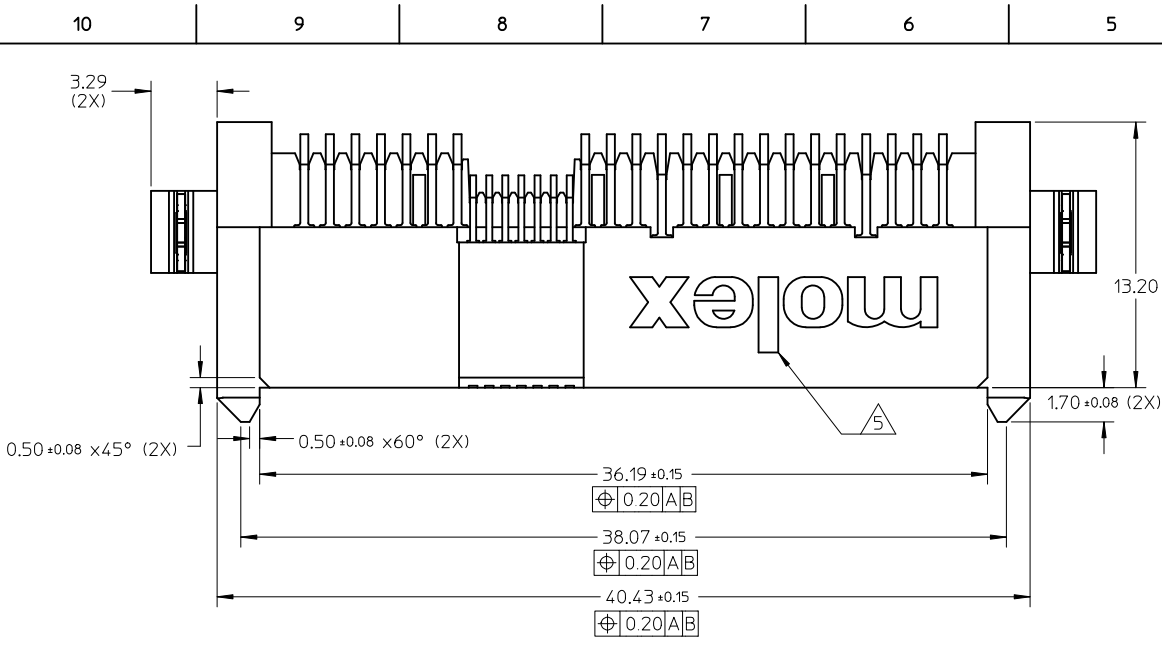
## Contact us

Tel: +86-755-8981 8866 Fax: +86-755-8427 6832

Email & Skype: info@chipsmall.com Web: www.chipsmall.com

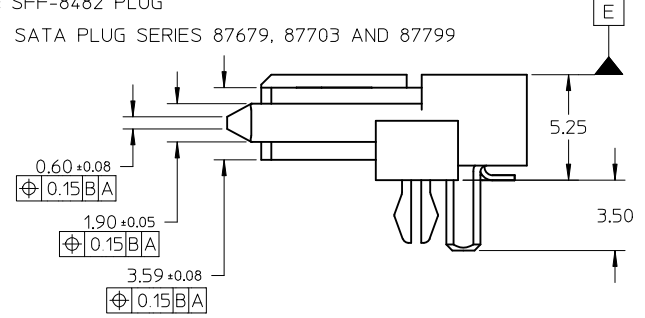
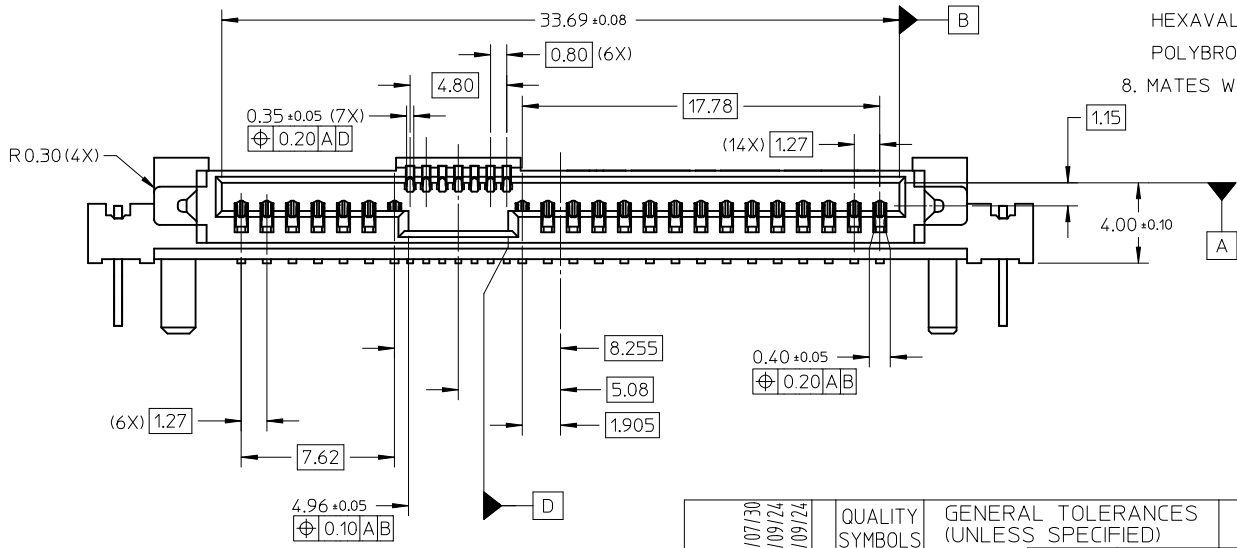
Address: A1208, Overseas Decoration Building, #122 Zhenhua RD., Futian, Shenzhen, China





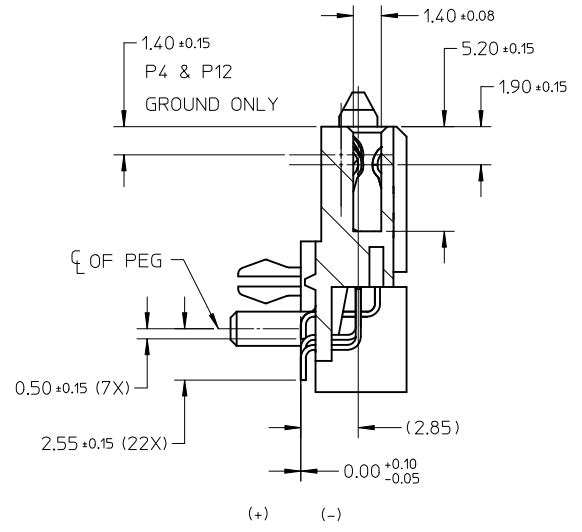
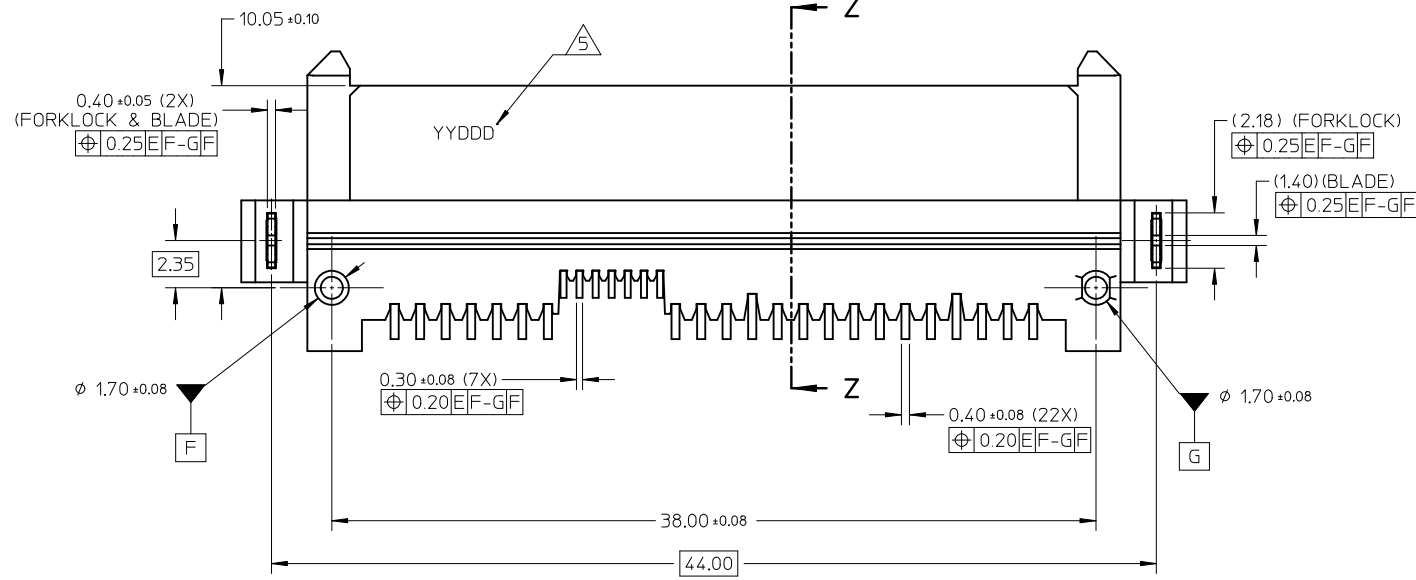
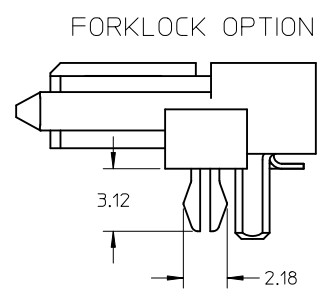
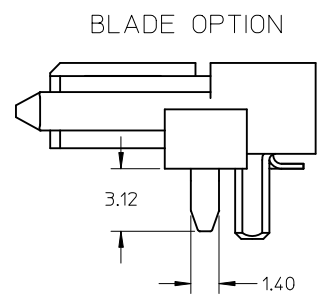
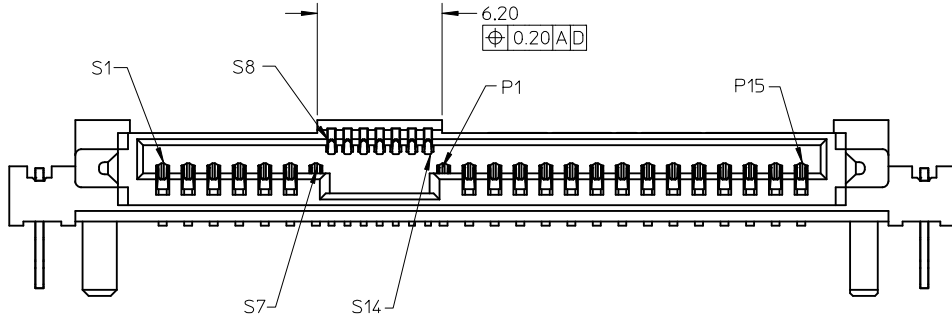
PART NUMBERS IN TRAY	PART NUMBERS IN T&R	HOLD DOWN OPTION
87975-1001	87975-1011	FORK LOCK
87975-1002	87975-1012	BLADE

- NOTES:
- MATERIAL:  
HOUSING: NYLON, GLASS FILLED, UL 94V-0, BLACK.  
TERMINAL/FORKLOCK/BLADE : COPPER ALLOY.
  - FINISHES:  
TERMINAL:  
CONTACT: 0.76µm MIN. SELECTIVE GOLD OVER 1.27µm MIN. NICKEL UNDERPLATE.  
SOLDERTAIL: 2.54µm MIN. TIN OVER 1.27µm MIN. NICKEL UNDERPLATE.  
FORKLOCK/BLADE: 2.54µm MIN. TIN OVER 1.27µm MIN. NICKEL UNDERPLATE.
  - PRODUCT SPECIFICATION: PS-87975-102
  - PACKAGING SPECIFICATION : TRAY.
  - MOLEX LOGO AND DATE CODE LOCATED APPROXIMATELY AS SHOWN.
  - NON FUNCTIONAL CORE HOLE MAY VARY.
  - THIS PRODUCT IS COMPLIANT TO RoHS DIRECTIVE WITH THE FOLLOWING BANNED SUBSTANCES - LEAD, MERCURY, CADMIUM, HEXAVALENT CHROMIUM, POLYBROMINATED BIPHENYLS AND POLYBROMINATED DIPHENYL ETHERS.
  - MATES WITH : SFF-8482 PLUG  
SATA PLUG SERIES 87679, 87703 AND 87799



REVISED EC NO: S2011-0079 DRW:SKANG 2010/07/30 CHKD:ATSEE 2010/09/24 APPR:MLONG 2010/09/24 REV A2	DESCRIPTION REV	QUALITY SYMBOLS	GENERAL TOLERANCES (UNLESS SPECIFIED)	DIMENSION STYLE	SCALE	DESIGN UNITS	THIRD ANGLE PROJECTION
		$F_{\sigma} = 0$ $F_{\sigma} = 0$ $F_{\sigma} = 0$	mm    INCH 4 PLACES ± --- ± --- 3 PLACES ± --- ± --- 2 PLACES ± 0.20 ± --- 1 PLACE ± --- ± --- ANGULAR ± 3 °	MM ONLY	NTS	METRIC	
			DRAFT WHERE APPLICABLE MUST REMAIN WITHIN DIMENSIONS	DRAWN BY: YKOH    DATE: 2005/03/16 CHECKED BY: DKOH    DATE: 2005/03/23 APPROVED BY: MLONG    DATE: 2010/09/24	TITLE	SERIAL ATTACH SCSI RECEPTACLE, RIGHT-ANGLE SMT, 2.85MM HEIGHT	
			SEE TABLE	MATERIAL NO.    DOCUMENT NO. SEE TABLE    SD-87975-101	MOLEX INCORPORATED		SHEET NO. 1 OF 5

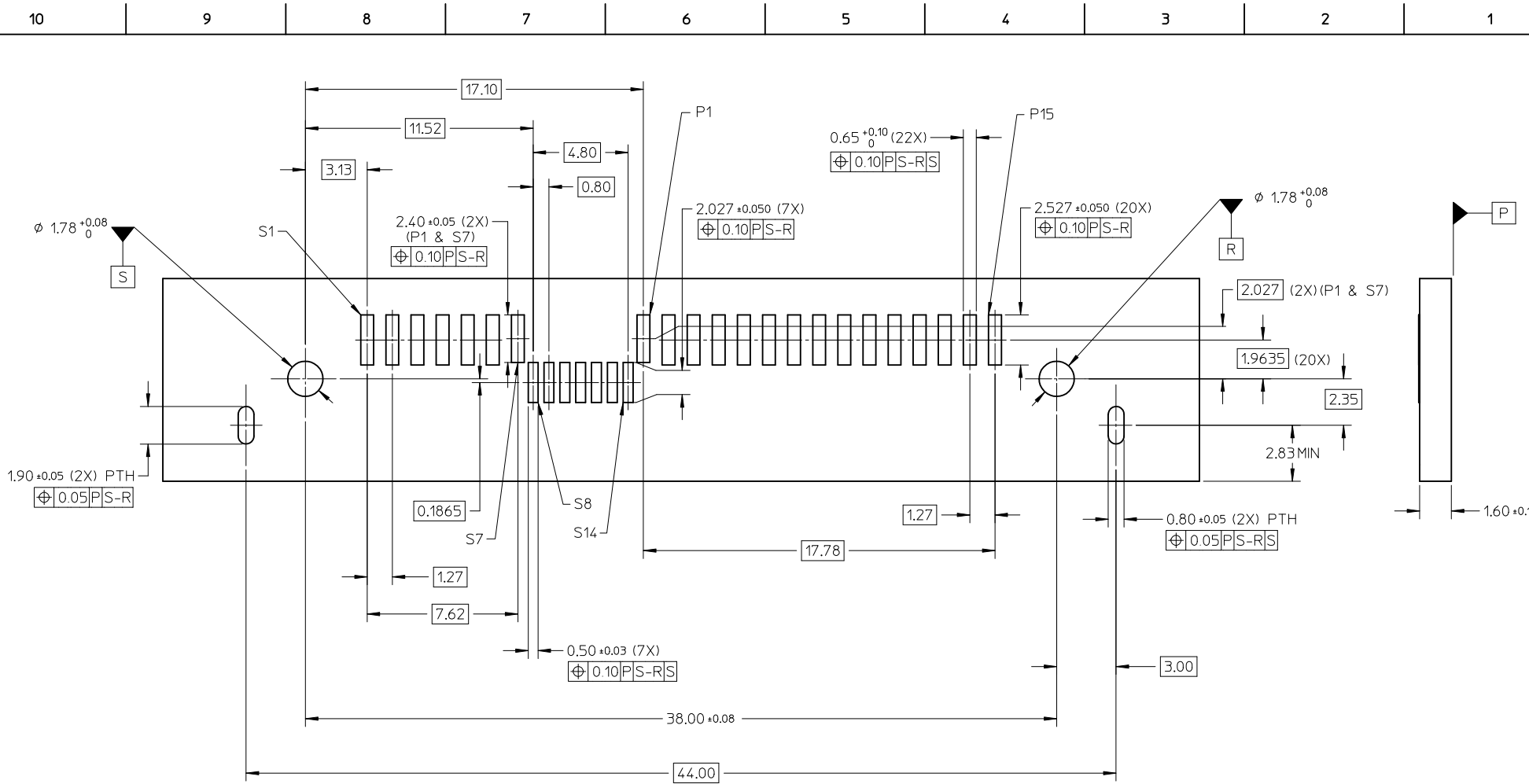
10 9 8 7 6 5 4 3 2 1



SECTION Z-Z

REVISED IEC NO: S2011-0079 DRWN:SKANG CHKD:ATSE APPR:MLONG	2010/07/30 2010/09/24 2010/09/24	DESCRIPTION REV	QUALITY SYMBOLS	GENERAL TOLERANCES (UNLESS SPECIFIED)		DIMENSION STYLE		SCALE	DESIGN UNITS	THIRD ANGLE PROJECTION
			$\nabla = 0$ $\nabla = 0$ $\nabla = 0$	mm	INCH	MM ONLY	NTS	METRIC		
			4 PLACES ± --- ± --- 3 PLACES ± --- ± --- 2 PLACES ± 0.20 ± --- 1 PLACE ± --- ± ---			DRAWN BY YKOH DATE 2005/03/16	TITLE			
			ANGULAR ± 3 °		CHECKED BY DKOH DATE 2005/03/23		SERIAL ATTACH SCSI RECEPTACLE, RIGHT-ANGLE SMT, 2.85MM HEIGHT			
DRAFT WHERE APPLICABLE MUST REMAIN WITHIN DIMENSIONS			MATERIAL NO. SEE TABLE		APPROVED BY MLONG DATE 2010/09/24		MOLEX INCORPORATED		SHEET NO. 2 OF 5	
A2			SIZE A3		THIS DRAWING CONTAINS INFORMATION THAT IS PROPRIETARY TO MOLEX INCORPORATED AND SHOULD NOT BE USED WITHOUT WRITTEN PERMISSION					

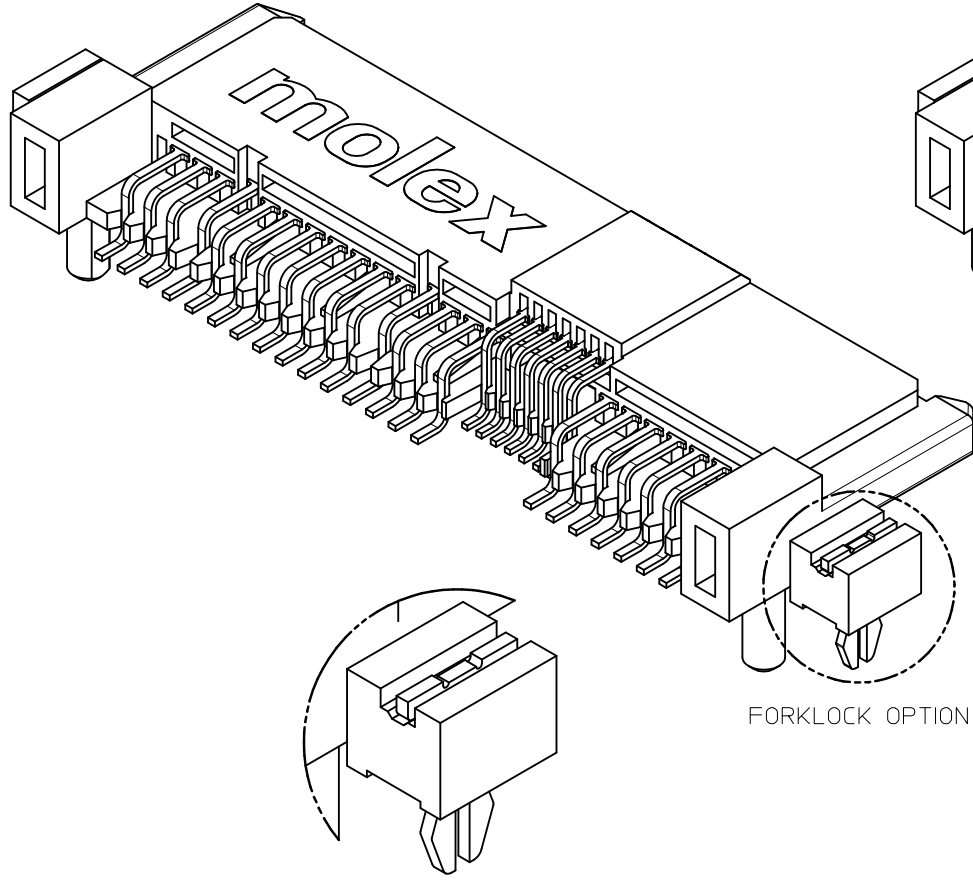
9 8 7 6 5 4 3 2 1



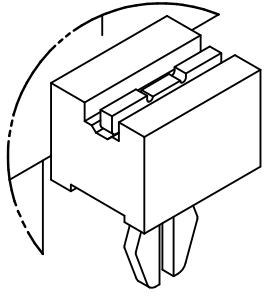
RECOMMENDED PCB LAYOUT

<b>REVISED</b> EC NO: S2011-0079 DRW:SKANG CHKD:ATSEE APPR:MLONG 2010/07/30 2010/09/24 2010/09/24	QUALITY SYMBOLS $F_A=0$ $F_B=0$ $F_C=0$	GENERAL TOLERANCES (UNLESS SPECIFIED) <table border="1"> <thead> <tr> <th></th> <th>mm</th> <th>INCH</th> </tr> </thead> <tbody> <tr> <td>4 PLACES</td> <td>± ---</td> <td>± ---</td> </tr> <tr> <td>3 PLACES</td> <td>± ---</td> <td>± ---</td> </tr> <tr> <td>2 PLACES</td> <td>± 0.20</td> <td>± ---</td> </tr> <tr> <td>1 PLACE</td> <td>± ---</td> <td>± ---</td> </tr> </tbody> </table>		mm	INCH	4 PLACES	± ---	± ---	3 PLACES	± ---	± ---	2 PLACES	± 0.20	± ---	1 PLACE	± ---	± ---	DIMENSION STYLE <b>MM ONLY</b> DRAWN BY: YKOH CHECKED BY: DKOH APPROVED BY: MLONG MATERIAL NO.	SCALE: NTS DESIGN UNITS: METRIC THIRD ANGLE PROJECTION	DATE: 2005/03/16 DATE: 2005/03/23 DATE: 2010/09/24	TITLE: SERIAL ATTACH SCSI RECEPTACLE, RIGHT-ANGLE SMT, 2.85MM HEIGHT <b>MOLEX</b> MOLEX INCORPORATED
		mm	INCH																		
	4 PLACES	± ---	± ---																		
	3 PLACES	± ---	± ---																		
2 PLACES	± 0.20	± ---																			
1 PLACE	± ---	± ---																			
A2	DRAFT WHERE APPLICABLE MUST REMAIN WITHIN DIMENSIONS	SEE TABLE	DOCUMENT NO. SD-87975-101	SHEET NO. 3 OF 5																	
THIS DRAWING CONTAINS INFORMATION THAT IS PROPRIETARY TO MOLEX INCORPORATED AND SHOULD NOT BE USED WITHOUT WRITTEN PERMISSION																					

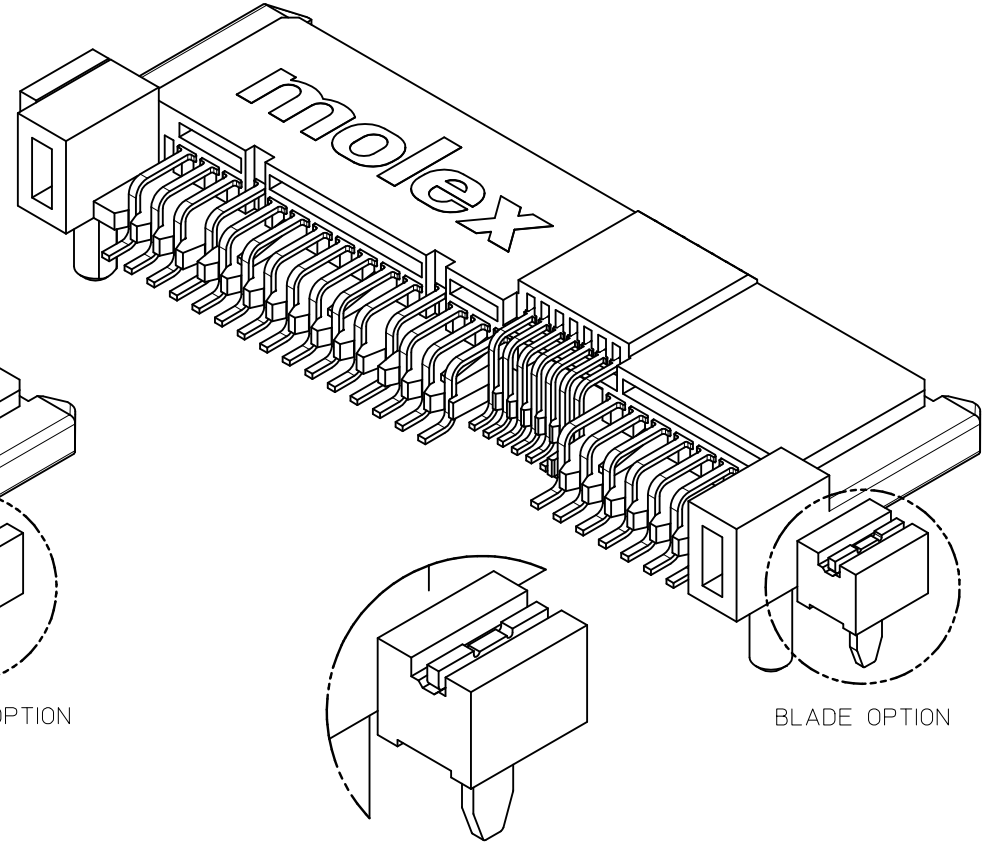
10 9 8 7 6 5 4 3 2 1



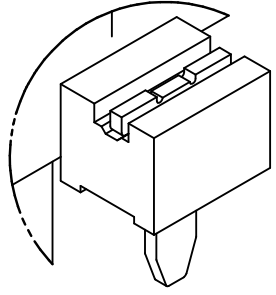
FORKLOCK OPTION



FORKLOCK OPTION



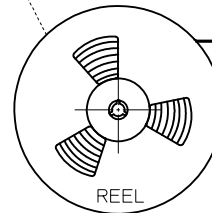
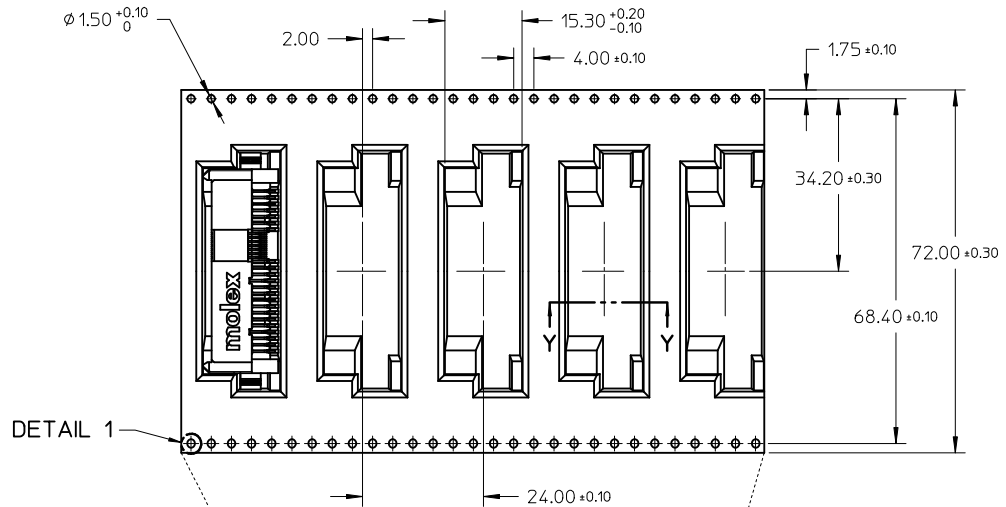
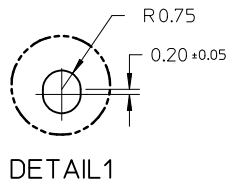
BLADE OPTION



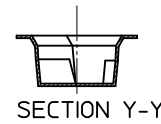
BLADE OPTION

REVISED EC NO: S2011-0079 DRWN:SKANG CHKD:ATSEE APPR:MLONG 2010/07/30 2010/09/24 2010/09/24	DESCRIPTION REV	QUALITY SYMBOLS	GENERAL TOLERANCES (UNLESS SPECIFIED)		DIMENSION STYLE MM ONLY		SCALE NTS	DESIGN UNITS METRIC	THIRD ANGLE PROJECTION	
		$\nabla_A = 0$ $\nabla_B = 0$ $\nabla_C = 0$	4 PLACES ± --- ± --- 3 PLACES ± --- ± --- 2 PLACES ± 0.20 ± --- 1 PLACE ± --- ± ---	mm      INCH	DRAWN BY YKOH	DATE 2005/03/16	TITLE			
			ANGULAR ± 3 °		CHECKED BY DKOH	DATE 2005/03/23	SERIAL ATTACH SCSI RECEPTACLE, RIGHT-ANGLE SMT, 2.85MM HEIGHT			
			DRAFT WHERE APPLICABLE MUST REMAIN WITHIN DIMENSIONS		APPROVED BY MLONG	DATE 2010/09/24	MOLEX INCORPORATED		DOCUMENT NO. SD-87975-101	SHEET NO. 4 OF 5
A2			SEE TABLE		THIS DRAWING CONTAINS INFORMATION THAT IS PROPRIETARY TO MOLEX INCORPORATED AND SHOULD NOT BE USED WITHOUT WRITTEN PERMISSION					

9 8 7 6 5 4 3 2 1

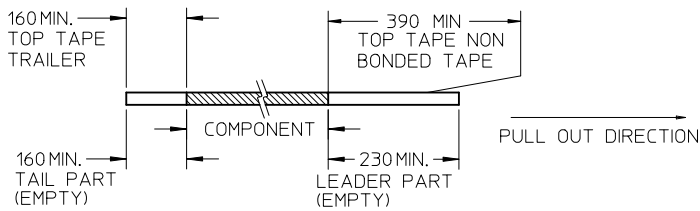


PULL OUT DIRECTION

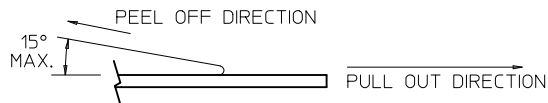


NOTES:

1. LEADER AND TRAILER TAPE



2. PEELING OFF FORCE OF THE TOP TAPE: 20 - 80gf.  
(PEELING DIRECTION AS SHOWN IN FOLLOWING FIGURE)



- 3. TAPE AND REEL SPECIFICATION IS AS PER EIA-481.
- 4. TAPE AND REEL QUANTITY : TBA.
- 5. THE TAPE IS TREATED FOR ANTI-STATIC.

REVISED EC NO: S2011-0079 DRWN:SKANG CHKD:ATSEE APPR:MLONG 2010/07/30 2010/09/24 2010/09/24	DESCRIPTION REV	QUALITY SYMBOLS	GENERAL TOLERANCES (UNLESS SPECIFIED)		DIMENSION STYLE MM ONLY		SCALE NTS	DESIGN UNITS METRIC	THIRD ANGLE PROJECTION	
		$F_A=0$ $F_C=0$ $F_P=0$	mm	INCH	DRAWN BY YKOH	DATE 2005/03/16	TITLE SERIAL ATTACH SCSI RECEPTACLE, RIGHT-ANGLE SMT, 2.85MM HEIGHT			
		4 PLACES ± --- ± --- 3 PLACES ± --- ± --- 2 PLACES ± 0.20 ± --- 1 PLACE ± --- ± ---	ANGULAR ± 3 °		CHECKED BY DKOH	DATE 2005/03/23	MOLEX INCORPORATED			
		DRAFT WHERE APPLICABLE MUST REMAIN WITHIN DIMENSIONS		SIZE A3	MATERIAL NO. SEE TABLE		DOCUMENT NO. SD-87975-101	SHEET NO. 5 OF 5		