



Chipsmall Limited consists of a professional team with an average of over 10 year of expertise in the distribution of electronic components. Based in Hongkong, we have already established firm and mutual-benefit business relationships with customers from,Europe,America and south Asia,supplying obsolete and hard-to-find components to meet their specific needs.

With the principle of "Quality Parts,Customers Priority,Honest Operation,and Considerate Service",our business mainly focus on the distribution of electronic components. Line cards we deal with include Microchip,ALPS,ROHM,Xilinx,Pulse,ON,Everlight and Freescale. Main products comprise IC,Modules,Potentiometer,IC Socket,Relay,Connector.Our parts cover such applications as commercial,industrial, and automotives areas.

We are looking forward to setting up business relationship with you and hope to provide you with the best service and solution. Let us make a better world for our industry!



## Contact us

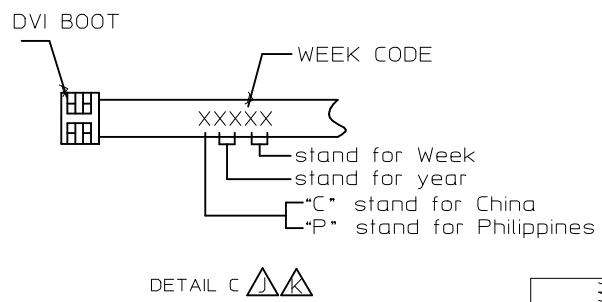
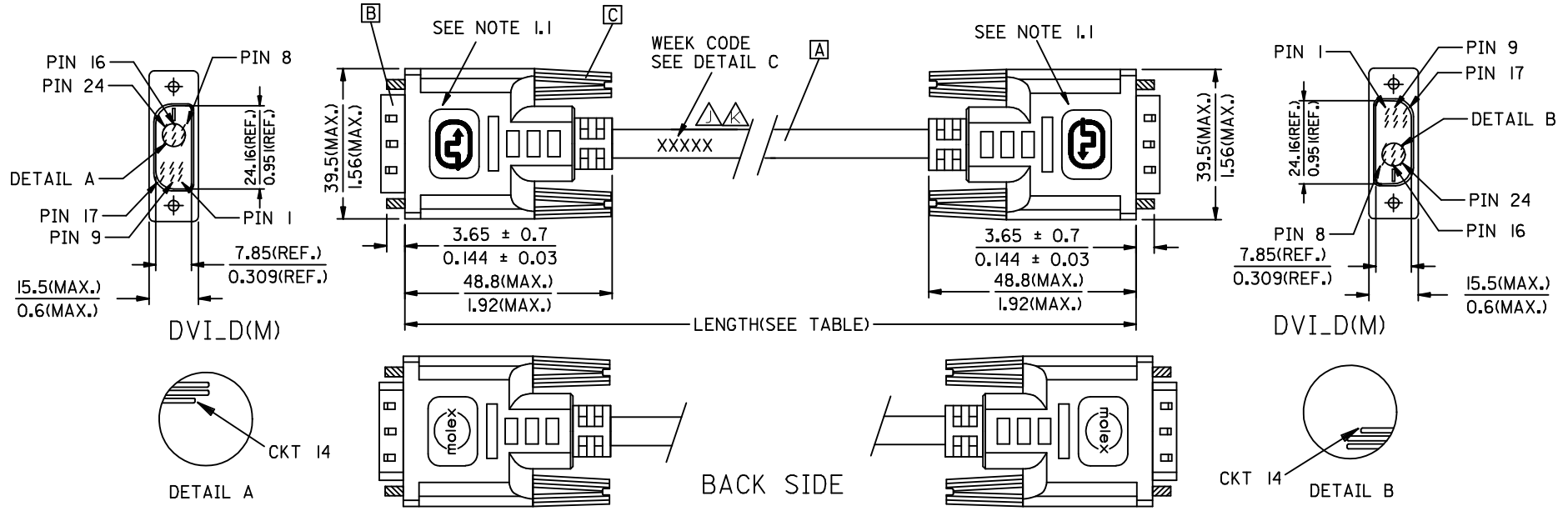
Tel: +86-755-8981 8866 Fax: +86-755-8427 6832

Email & Skype: info@chipsmall.com Web: www.chipsmall.com

Address: A1208, Overseas Decoration Building, #122 Zhenhua RD., Futian, Shenzhen, China



REVISIONS				
EC NO	DATE	REV	DESCRIPTION	CHANGER
CY14-5154	2013/08/30	J	CHANGE THE LABELING CONTENT FOR PRODUCTS TRANSFER TO PHILIPPINES	AHOU
CY14-5301	2013/09/12	K	CHANGE THE LABELING CONTENT FOR PRODUCTS TRANSFER TO PHILIPPINES	AHOU



▲	8874I-802I	DVI_D-DVI_D SINGLE LINK CABLE 5M PARCHMENT WHT	5000 ± 150 196.9 ± 5.9	PARCHMENT WHITE	887808287
▲	8874I-801I	DVI_D-DVI_D SINGLE LINK CABLE 3M PARCHMENT WHT	3000 ± 80 118.1 ± 3.1	PARCHMENT WHITE	887808287
▲	8874I-800I	DVI_D-DVI_D SINGLE LINK CABLE 2M PARCHMENT WHT	2000 ± 60 78.7 ± 2.4	PARCHMENT WHITE	887808287
▲	8874I-8020	DVI_D-DVI_D SINGLE LINK CABLE 5M BLK	5000 ± 150 196.9 ± 5.9	BLACK	887808276
▲	8874I-8010	DVI_D-DVI_D SINGLE LINK CABLE 3M BLK	3000 ± 80 118.1 ± 3.1	BLACK	887808276
▲	8874I-8000	DVI_D-DVI_D SINGLE LINK CABLE 2M BLK	2000 ± 60 78.7 ± 2.4	BLACK	887808276
	<b>MX P/N</b>	<b>DESCRIPTION</b>	<b>LENGTH</b>	<b>CABLE COLOR</b>	<b>CABLE P/N</b>

<b>ENTER DESCRIPTION</b> EC NO: CPG2014-0796 DRWN: XJGU001 CHKD: AHOU APPR: XAWANG	<b>QUALITY SYMBOLS</b> $F_A = 0$ $F_C = 0$ $F_P = 0$	<b>GENERAL TOLERANCES (UNLESS SPECIFIED)</b>		<b>DIMENSION STYLE</b> MM/IN		<b>SCALE</b>	<b>DESIGN UNITS</b> METRIC		<b>THIRD ANGLE PROJECTION</b>
			mm	INCH	DRAWN BY XJGU001	DATE 2013/09/06	<b>TITLE</b> DVI_D-DVI_D S.LINK CBL		
			4 PLACES	± --- ± ---	CHECKED BY JASON	DATE 2013/09/06			
			3 PLACES	± --- ± ---	APPROVED BY XAWANG	DATE 2013/09/12			
				<b>MATERIAL NO.</b> SEE TABLE		<b>DOCUMENT NO.</b> SD-8874I-001		<b>SHEET NO.</b> 1 OF 2	
				<b>SIZE</b> A 4		<b>THIS DRAWING CONTAINS INFORMATION THAT IS PROPRIETARY TO MOLEX INCORPORATED AND SHOULD NOT BE USED WITHOUT WRITTEN PERMISSION</b>			

NOTE: 1. OVERMOLD SPECIFICATION

- 1.1 DVI BOOT MOLDED WITH SNOW WHITE PVC RESIN P/N IS 887800076.
- 1.2 UL94V-0, COLOR: MAD432
- 1.3 HARDNESS (DUROMETER): SHORE A 90-95
- 2. MECHANICAL SPECIFICATION
  - 2.1 CABLE SHOULD STAND THE PULL FORCE 89-111N FOR 30 SECONDS WITH NO VISIBLE TERMINATION DAMAGE.
  - 2.2 CABLE SHOULD PASS THE FLEX TEST IN 100 CYCLES AT EACH OF PLANES, PER EIA 364-41, CONDITION 1.
- 3. CABLE ELECTRICAL SPECIFICATION
  - 3.1 DIELECTRIC STRENGTH: 300VDC FOR 10mS.
  - 3.2 INSULATION RESISTANCE: 20 MEGA Ohms
  - 3.3 DIFFERENTIAL LINES CHARACTERISTIC IMPEDANCE: 100±7 Ohms@TDR.
- 4. DVI CONNECTOR SPECIFICATION
  - 4.1 REFER TO PRODUCT SPEC. PS74320-0001.
  - 4.2 CONTACT PLATING: AU FLASH.
- 5. SHORTCIRCUIT AMONG DRAIN WIRES IS ACCEPTABLE.
- 6. THIS PRODUCT MUST MEET MX RoHS COMPLIANCE.

7. CONNECTION DIAGRAM

SHIELD	SHIEDL	GROUND
PIN 24	PIN 24	TMDS CLOCK-
PIN 23	PIN 23	TMDS CLOCK+
PIN 22	PIN 22	TMDS CLOCK SHIELD
PIN 19	PIN 19	TMDS DATA 0 SHIELD
PIN 18	PIN 18	TMDS DATA 0+
PIN 17	PIN 17	TMDS DATA 0-
PIN 16	PIN 16	HOT PLUG DETECT
PIN 15	PIN 15	GROUND(+5V & HV SYNC.)
PIN 14	PIN 14	POWER +5V
PIN 11	PIN 11	TMDS DATA 1 SHIELD
PIN 10	PIN 10	TMDS DATA 1+
PIN 9	PIN 9	TMDS DATA 1-
PIN 7	PIN 7	DDC DATA
PIN 6	PIN 6	DDC CLOCK
PIN 3	PIN 3	TMDS DATA 2 SHIELD
PIN 2	PIN 2	TMDS DATA 2+
PIN 1	PIN 1	TMDS DATA 2-
DVI_D	DVI_D	CABLE FUNCTION

8. MATERIAL LIST

ITEM	DESCRIPTION
C	DVI THUMB SCREW 887806077
B	DVI_D SINGLE CHANNEL G/F CONNECTOR 743230101
A	DVI SINGLE LINK CABLE (SEE TABLE)

ENTER DESCRIPTION EC NO: CPG2014-0796 DRWN: XJGU001 CHKD: AHO APPR: XAWANG 2013/09/14 2013/09/14 2013/09/14	QUALITY SYMBOLS F=0 F=0 F=0	GENERAL TOLERANCES (UNLESS SPECIFIED)		DIMENSION STYLE MM/IN		SCALE	DESIGN UNITS METRIC	THIRD ANGLE PROJECTION
		4 PLACES	± ---	± ---	DRAWN BY	DATE	TITLE DVI_D-DVI_D S.LINK CBL	
		3 PLACES	± ---	± ---	CHECKED BY	DATE		
		2 PLACES	± ---	± ---	JASON	2013/09/06		
1 PLACE	± ---	± ---	APPROVED BY	DATE				
0 PLACE	± ---	± ---	XAWANG	2013/09/12	MATERIAL NO.	DOCUMENT NO.	SHEET NO.	
DRAFT WHERE APPLICABLE MUST REMAIN WITHIN DIMENSIONS		ANGULAR ± ---°		SEE TABLE		SD-88741-001		2 OF 2
K		REV		SIZE A 4		THIS DRAWING CONTAINS INFORMATION THAT IS PROPRIETARY TO MOLEX INCORPORATED AND SHOULD NOT BE USED WITHOUT WRITTEN PERMISSION		



OTE:1. OVERMOLD SPECIFICATION

- 1.1 DVI BOOT MOLDED WITH SNOW WHITE PVC RESIN P/N IS 887800076.
- 1.2 UL94V-0, COLOR: MAD432
- 1.3 HARDNESS (DUROMETER): SHORE A 90-95

2. MECHANICAL SPECIFICATION

- 2.1 CABLE SHOULD STAND THE PULL FORCE 89-11IN FOR 30 SECONDS WITH NO VISIBLE TERMINATION DAMAGE.
- 2.2 CABLE SHOULD PASS THE FLEX TEST IN 100 CYCLES AT EACH OF PLANES, PER EIA 364-4I, CONDITION I.

3. CABLE ELECTRICAL SPECIFICATION

- 3.1 DIELECTRIC STRENGTH: 300VDC FOR 10mS.
- 3.2 INSULATION RESISTANCE: 20 MEGA Ohms
- 3.3 DIFFERENTIAL LINES CHARACTERISTIC IMPEDANCE: 100±7 Ohms@TDR.

4. DVI CONNECTOR SPECIFICATION

- 4.1 REFER TO PRODUCT SPEC. PS74320-0001.
- 4.2 CONTACT PLATING: AU FLASH.
- 5. SHORTCIRCUIT AMONG DRAIN WIRES IS ACCEPTABLE.

6. THIS PRODUCT MUST MEET MX RoHS COMPLIANCE.

7. CONNECTION DIAGRAM

SHIELD	SHIEDL	GROUND
PIN 24	PIN 24	TMDS CLOCK-
PIN 23	PIN 23	TMDS CLOCK+
PIN 22	PIN 22	TMDS CLOCK SHIELD
PIN 19	PIN 19	TMDS DATA 0 SHIELD
PIN 18	PIN 18	TMDS DATA 0+
PIN 17	PIN 17	TMDS DATA 0-
PIN 16	PIN 16	HOT PLUG DETECT
PIN 15	PIN 15	GROUND(+5V & HV SYNC.)
PIN 14	PIN 14	POWER +5V
PIN 11	PIN 11	TMDS DATA 1 SHIELD
PIN 10	PIN 10	TMDS DATA 1+
PIN 9	PIN 9	TMDS DATA 1-
PIN 7	PIN 7	DDC DATA
PIN 6	PIN 6	DDC CLOCK
PIN 3	PIN 3	TMDS DATA 2 SHIELD
PIN 2	PIN 2	TMDS DATA 2+
PIN 1	PIN 1	TMDS DATA 2-
DVI_D	DVI_D	CABLE FUNCTION

8. MATERIAL LIST

ITEM	DESCRIPTION
C	DVI THUMB SCREW 887806077
B	DVI_D SINGLE CHANNEL G/F CONNECTOR 743230101
A	DVI SINGLE LINK CABLE (SEE TABLE)

ENTER DESCRIPTION EC NO: DG2006-0186 DRWN: PDAI CHKD: APPR: TKAN	2006/03/09 2006/03/09 2006/03/10	QUALITY SYMBOLS ▽=0 ▽=0	GENERAL TOLERANCES (UNLESS SPECIFIED)		DIMENSION STYLE MM/IN		SCALE ---	DESIGN UNITS METRIC	THIRD ANGLE PROJECTION		
			mm      INCH	DRAWN BY PDAI	DATE 2006/03/07	TITLE DVI_D-DVI_D S.LINK CBL					
			4 PLACES ± --- ± --- 3 PLACES ± --- ± --- 2 PLACES ± --- ± --- 1 PLACE ± --- ± ---	CHECKED BY TEDDY	DATE 2006/03/07	MOLEX MOLEX INCORPORATED					
			ANGULAR ± ---°	APPROVED BY BORON	DATE 2006/03/07	MATERIAL NO. SEE TABLE		DOCUMENT NO. SD-88741-001	SHEET NO. 2 OF 2		
DRAFT WHERE APPLICABLE MUST REMAIN WITHIN DIMENSIONS			THIS DRAWING CONTAINS INFORMATION THAT IS PROPRIETARY TO MOLEX INCORPORATED AND SHOULD NOT BE USED WITHOUT WRITTEN PERMISSION								