



Chipsmall Limited consists of a professional team with an average of over 10 year of expertise in the distribution of electronic components. Based in Hongkong, we have already established firm and mutual-benefit business relationships with customers from,Europe,America and south Asia,supplying obsolete and hard-to-find components to meet their specific needs.

With the principle of “Quality Parts,Customers Priority,Honest Operation,and Considerate Service”,our business mainly focus on the distribution of electronic components. Line cards we deal with include Microchip,ALPS,ROHM,Xilinx,Pulse,ON,Everlight and Freescale. Main products comprise IC,Modules,Potentiometer,IC Socket,Relay,Connector.Our parts cover such applications as commercial,industrial, and automotives areas.

We are looking forward to setting up business relationship with you and hope to provide you with the best service and solution. Let us make a better world for our industry!



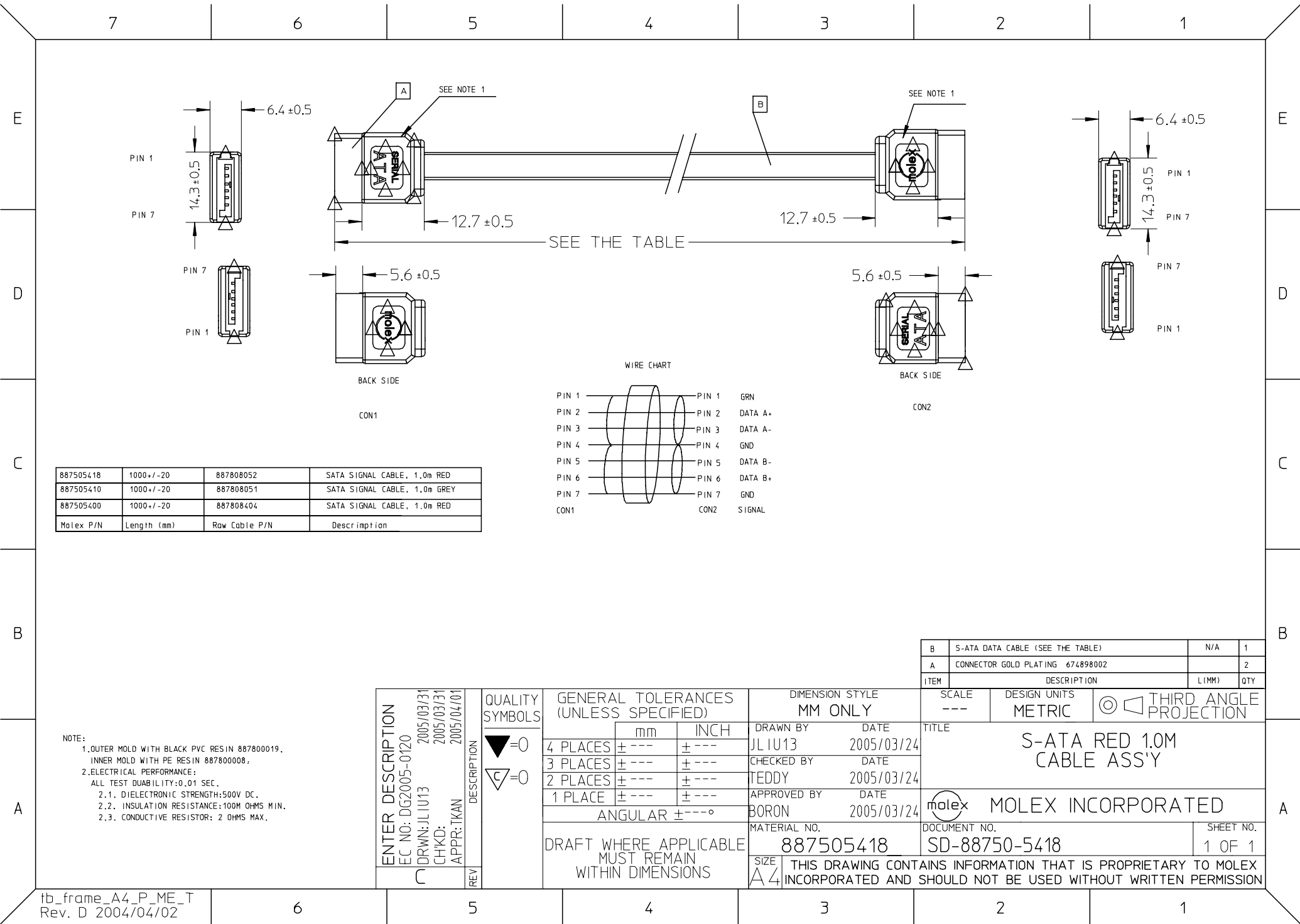
Contact us

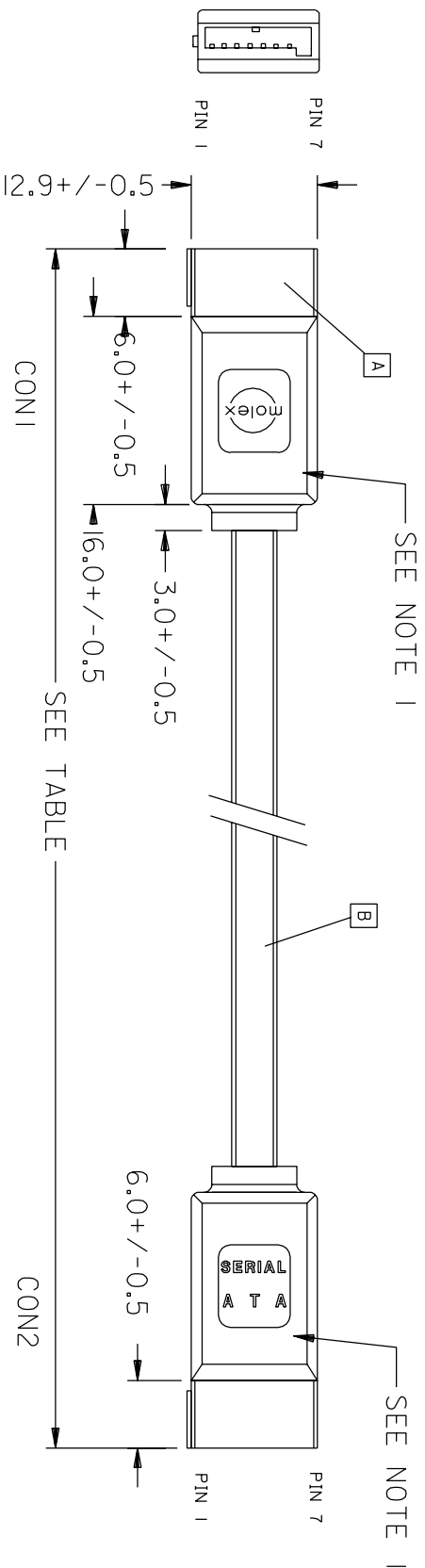
Tel: +86-755-8981 8866 Fax: +86-755-8427 6832

Email & Skype: info@chipsmall.com Web: www.chipsmall.com

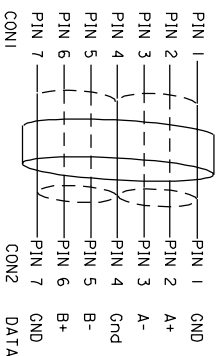
Address: A1208, Overseas Decoration Building, #122 Zhenhua RD., Futian, Shenzhen, China





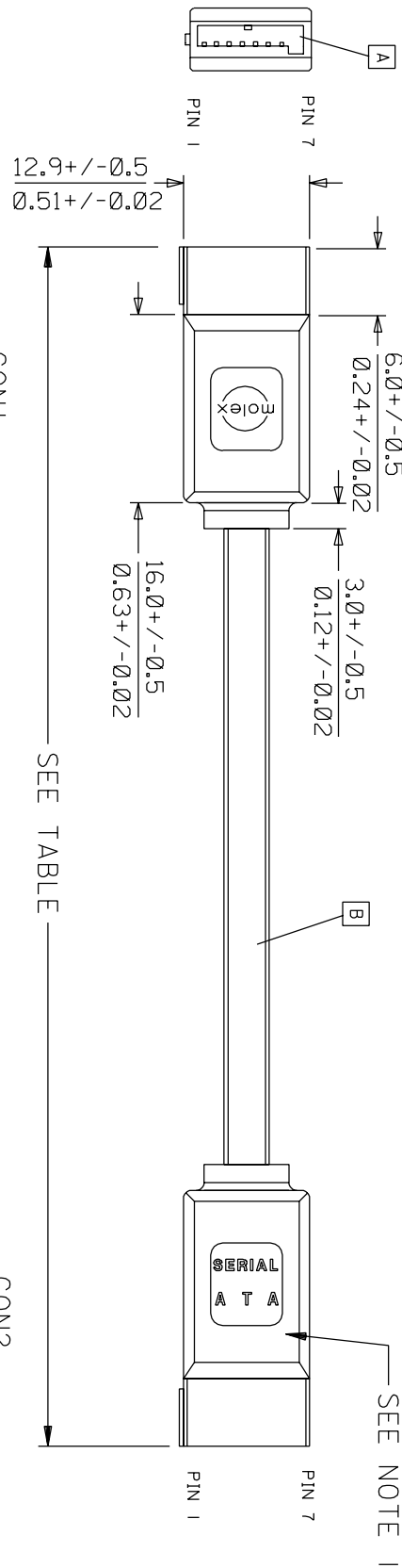


NOTE:
PHYSICAL
1. INNER MOLD WITH PE RESIN 887800008;
OUTER MOLD WITH BLACK PVC RESIN 887800019.
ELECTRICAL PERFORMANCE:
2. DIELECTRONIC STRENGTH:500V DC
3. INSULATION RESISTANCE:100M OHMS
4. CONDUCTIVE RESISTOR: 2 OHMS



887505418	1000+/-20	887808052	S-ATA SIGNAL CABLE, 1.0M RED;	SEE TABLE
887505318	500+/-10	887808052	S-ATA SIGNAL CABLE, 0.5M RED;	2
MAT. NO.	LENGTH(MM)	CABLE P/N	DESCRIPTION	L QTY.

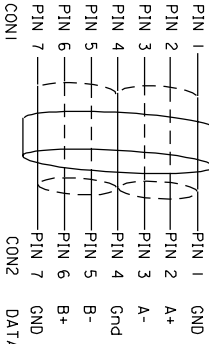
TABLE		GENERAL TOLERANCES: (UNLESS SPECIFIED)		SCALE		DESIGN UNITS		THIRD ANGLE PROJECTION		DIMENSIONS:		SHT	REV
QUALITY SYMBOLS		mm		mm		mm		mm		mm		mm	
MAJOR =		4 PLACES ±0.		DRAWN BY & DATE BENTZ 03/01/08		CHECKED BY & DATE Tony Wong 03/01/08		TITLE: S-ATA SIGNAL CABLE ASSY		DRAWING NO. SD-88755-004		SHEET NO. 1 OF 1	
CRITICAL =		3 PLACES ±0.		APPROVED BY & DATE Tony Wong 03/01/08		MATERIAL NO. SEE TABLE		MOLEX INCORPORATED		SD-88755-004		SHEET NO. 1 OF 1	
1 PLACE ±0.		ANGULAR: ±		CAD FILENAME S88755AD.S001		THIS DRAWING CONTAINS INFORMATION THAT IS PROPRIETARY TO MOLEX INCORPORATED AND SHOULD NOT BE USED WITHOUT WRITTEN PERMISSION.		SEE TABLE		SD-88755-004		SHEET NO. 1 OF 1	
EC NO. A		DRWN: BENTZ 03/01/08		DESIGN BY & DATE BENTZ 03/01/08		CHECKED BY & DATE Tony Wong 03/01/08		TITLE: S-ATA SIGNAL CABLE ASSY		DRAWING NO. SD-88755-004		SHEET NO. 1 OF 1	
CH'K:		REV		DESCRIPTION		ITEM		DESCRIPTION		DIMENSIONS:		SHT	
APPR:		REV		DESCRIPTION		ITEM		DESCRIPTION		DIMENSIONS:		SHT	



CON1

CON2

WIRE CHART



NOTE:
PHYSICAL
1. INNER MOLD WITH PE RESIN 887800008;
OUTER MOLD WITH BLACK PVC RESIN 887800019.
ELECTRICAL PERFORMANCE:
2. DIELECTRONIC STRENGTH: 500V DC
3. INSULATION RESISTANCE: 100M OHMS MIN.
4. CONDUCTIVE RESISTOR: 2 OHMS MAX.

887505418	1000+/-20	40+/-0.8	887808052	S-ATA SIGNAL CABLE, 1.0M RED;	B	S-ATA SIGNAL CABLE RED 887808052	SEE TABLE	1 PCS
887505318	500+/-10	20+/-0.4	887808052	S-ATA SIGNAL CABLE, 0.5M RED;	A	CONNECTOR 675380001		2 PCS
MOLEX NO.	LENGTH(MM)	LENGTH(INCH)	CABLE P/N	DESCRIPTION	ITEM	DESCRIPTION	L	QTY.

TABLE		QUALITY SYMBOLS		GENERAL TOLERANCES: (UNLESS SPECIFIED)		SCALE		DESIGN UNITS		THIRD ANGLE PROJECTION		DIMENSIONS:		SHT		REV	
MAJOR		MINOR		MM		INCH		MM		INCH		MM		INCH		MM	
4 PLACES		±0.		±.		±.		DRAWN BY & DATE		BENTZ 03/01/08		CHECKED BY & DATE		Tony Wong 03/01/08		APPROVED BY & DATE	
3 PLACES		±0.		±.		±.		Titled		S-ATA STRAIGHT TO STRAIGHT SIGNAL CBL		RED, 0.5M, 1.0M					
2 PLACES		±0.		±.		±.		MOLEX INCORPORATED									
1 PLACE		±0.		±.		±.		CAD FILENAME		S88755AD.S001		MATERIAL NO.		SD-88755-004		SHEET NO.	
ANGULAR: ±		°		°		°		THIS DRAWING CONTAINS INFORMATION THAT IS PROPRIETARY TO MOLEX INCORPORATED AND SHOULD NOT BE USED WITHOUT WRITTEN PERMISSION.									