



Chipsmall Limited consists of a professional team with an average of over 10 year of expertise in the distribution of electronic components. Based in Hongkong, we have already established firm and mutual-benefit business relationships with customers from,Europe,America and south Asia,supplying obsolete and hard-to-find components to meet their specific needs.

With the principle of "Quality Parts,Customers Priority,Honest Operation,and Considerate Service",our business mainly focus on the distribution of electronic components. Line cards we deal with include Microchip,ALPS,ROHM,Xilinx,Pulse,ON,Everlight and Freescale. Main products comprise IC,Modules,Potentiometer,IC Socket,Relay,Connector.Our parts cover such applications as commercial,industrial, and automotives areas.

We are looking forward to setting up business relationship with you and hope to provide you with the best service and solution. Let us make a better world for our industry!



Contact us

Tel: +86-755-8981 8866 Fax: +86-755-8427 6832

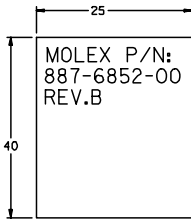
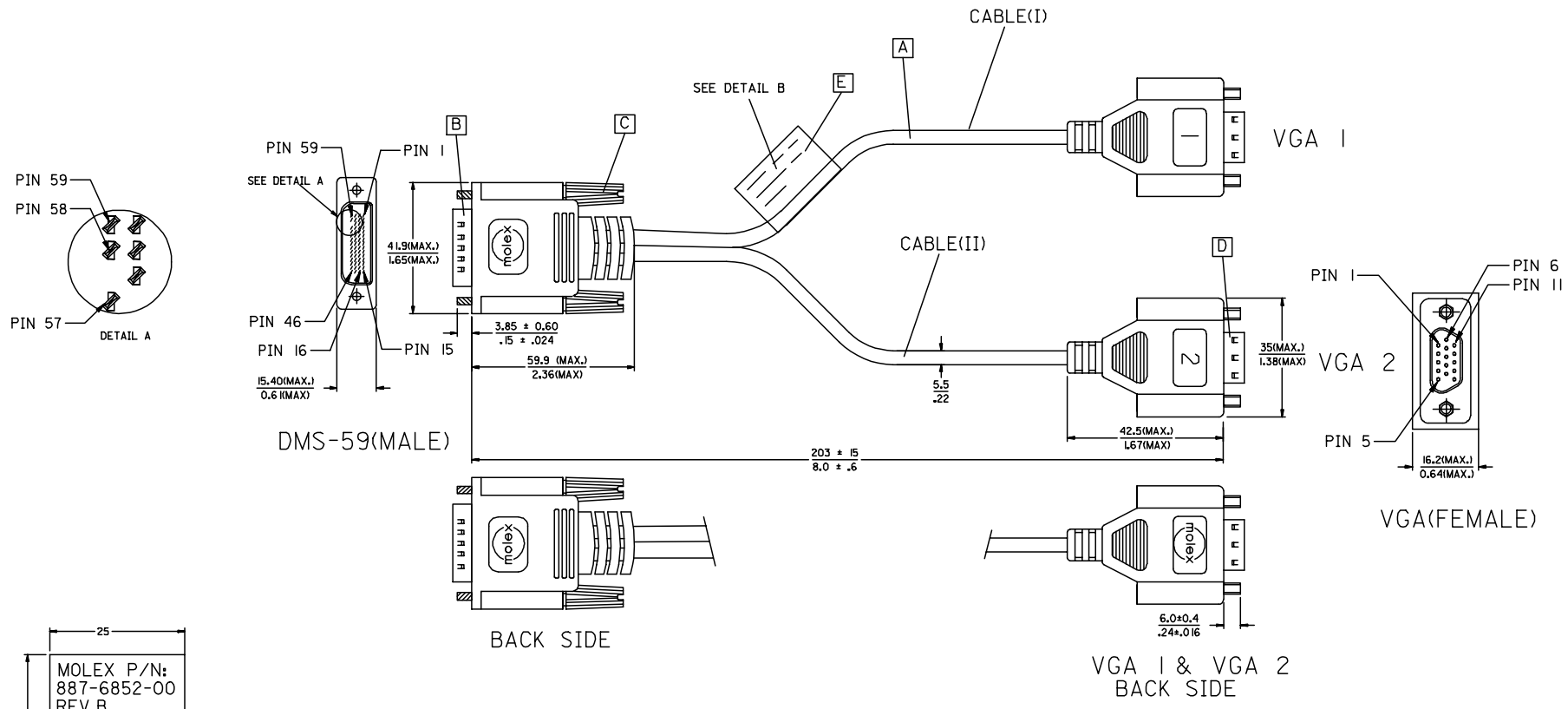
Email & Skype: info@chipsmall.com Web: www.chipsmall.com

Address: A1208, Overseas Decoration Building, #122 Zhenhua RD., Futian, Shenzhen, China



7 6 5 4 3 2 1

E
D
C
B
A



ENTER DESCRIPTION EC NO: DG2006-0186 DRWN:PDAI CHKD: APPR:TKAN	2006/03/09 2006/03/09 2006/03/10	QUALITY SYMBOLS ▽=0 ◻=0	GENERAL TOLERANCES (UNLESS SPECIFIED)		DIMENSION STYLE	SCALE	DESIGN UNITS	THIRD ANGLE PROJECTION	
					MM/IN	---	METRIC		
REV C	DESCRIPTION DMS-59(MALE) TO TWO VGA(FEMALE) ADAPTER CABLE	DRAFT WHERE APPLICABLE MUST REMAIN WITHIN DIMENSIONS	4 PLACES	± ---	± ---	DRAWN BY	DATE	TITLE	
			3 PLACES	± ---	± ---	PDAI	2006/03/07	DMS59(M) TO TWO VGA(F) ADAPTER CABLE	
			2 PLACES	± ---	± ---	CHECKED BY	DATE		
1 PLACE	± ---	± ---	ZXDENG	2006/03/07	APPROVED BY	DATE			
			ANGULAR ± ---°		BORON	2006/03/07	MOLEX MOLEX INCORPORATED		
					MATERIAL NO.	DOCUMENT NO.	SHEET NO.		
					887685200	SD-88744-096	1 OF 2		
					SIZE	THIS DRAWING CONTAINS INFORMATION THAT IS PROPRIETARY TO MOLEX INCORPORATED AND SHOULD NOT BE USED WITHOUT WRITTEN PERMISSION			
					A 4				

6 5 4 3 2 1

WIRING DIAGRAM:

SHIELD	SHIELD	GROUND
PIN 59	PIN 7	GROUND(GREEN)
PIN 58	PIN 2	RGB1_GREEN
PIN 57	PIN 5	GROUND(ANALOG)
PIN 56	PIN 13	RGB1_HSYNC
PIN 55	PIN 14	RGB1_VSYNC
PIN 54	PIN 10	GROUND(SYNCS)
PIN 7	PIN 12	RGB1_SDA(DDC DATA)
PIN 6	PIN 15	RGB1_SCL(DDC CLOCK)
PIN 5	PIN 9	+5V
PIN 4	PIN 8	GROUND(BLUE)
PIN 3	PIN 3	RGB1_BLUE
PIN 2	PIN 1	RGB1_RED
PIN 1	PIN 6	GROUND(RED)
DMS-59	VGA1	CABLE FUNCTION

SHIELD	SHIELD	GROUND
PIN 46	PIN 7	GROUND(GREEN)
PIN 47	PIN 2	RGB2_GREEN
PIN 49	PIN 5	GROUND(ANALOG)
PIN 50	PIN 13	RGB2_HSYNC
PIN 51	PIN 14	RGB2_VSYNC
PIN 52	PIN 10	GROUND(SYNCS)
PIN 9	PIN 12	RGB2_SDA(DDC DATA)
PIN 10	PIN 15	RGB2_SCL(DDC CLOCK)
PIN 11	PIN 9	+5V
PIN 12	PIN 8	GROUND(BLUE)
PIN 13	PIN 3	RGB2_BLUE
PIN 14	PIN 1	RGB2_RED
PIN 15	PIN 6	GROUND(RED)
DMS-59	VGA2	CABLE FUNCTION

NOTE:1. OVERMOLD SPECIFICATION

- 1.1 DMS-59 BOOT MOLDED WITH SNOW WHITE PVC RESIN, UL94V-0.
- 1.2 VGA BOOT MOLDED WITH BLUE PVC RESIN, UL94V-0.

2. MECHANICAL SPECIFICATION

- 2.1 CABLE SHOULD STAND THE PULL FORCE 89-111N FOR 30 SECONDS WITH NO VISIBLE TERMINATION DAMAGE.
- 2.2 CABLE SHOULD PASS THE FLEX TEST IN 100 CYCLES AT EACH OF PLANES, PER EIA 364-41, CONDITION I.

3. CABLE ASSEMBLY ELECTRICAL SPECIFICATION

- 3.1 HI-POT VOLTAGE: 300VDC FOR 10ms.
- 3.2 INSULATION RESISTANCE: 20 MEGA Ohms MIN.
- 3.3 CONNECTION RESISTANCE: 2 Ohms MAX.
- 3.4 COAXIAL LINES CHARACTERISTIC IMPEDANCE: 75 ±10% Ohms @TDR
- 3.5 WRAP COPPER TAPE OVER BRAID, THEN CRIMP THE METAL CAN ON COPPER TAPE WITH 360°.
- 4. DVI CONNECTOR PLATING: AU FLASH PLATING.
- 5. SCREW SPEC.: 4-40 UNC.

MATERIAL LIST:

E	LABEL	I
D	VGA D-SUB CONNECTOR(FEMALE)	2
C	LFH THUMB SCREW 4-40 UNC	2
B	DMS-59 PLUG ASSY'(NATURE)	1
A	DVI ANALOG CABLE BLACK	2
ITEM	DESCRIPTION	QTY.

ENTER DESCRIPTION EC NO: DG2006-0186 DRWN:PDAI 2006/03/09 CHKD: 2006/03/09 APPR:TKAN 2006/03/10	QUALITY SYMBOLS ▽=0 ▽=0	GENERAL TOLERANCES (UNLESS SPECIFIED)		DIMENSION STYLE		SCALE	DESIGN UNITS	THIRD ANGLE PROJECTION	
			mm	INCH	MM/IN	---	METRIC		
		4 PLACES	±---	±---	DRAWN BY	DATE	TITLE		
		3 PLACES	±---	±---	PDAI	2006/03/07	DMS59(M) TO TWO VGA(F) ADAPTER CABLE		
2 PLACES	±---	±---	CHECKED BY	DATE	MOLEX INCORPORATED				
1 PLACE	±---	±---	ZXDENG	2006/03/07					
ANGULAR ±---°		APPROVED BY		DATE	DOCUMENT NO.		SHEET NO.		
DRAFT WHERE APPLICABLE MUST REMAIN WITHIN DIMENSIONS		BORON		2006/03/07	887685200		SD-88744-096		
		MATERIAL NO.		887685200		SD-88744-096		2 OF 2	
		SIZE		THIS DRAWING CONTAINS INFORMATION THAT IS PROPRIETARY TO MOLEX INCORPORATED AND SHOULD NOT BE USED WITHOUT WRITTEN PERMISSION					