



Chipsmall Limited consists of a professional team with an average of over 10 year of expertise in the distribution of electronic components. Based in Hongkong, we have already established firm and mutual-benefit business relationships with customers from,Europe,America and south Asia,supplying obsolete and hard-to-find components to meet their specific needs.

With the principle of “Quality Parts,Customers Priority,Honest Operation,and Considerate Service”,our business mainly focus on the distribution of electronic components. Line cards we deal with include Microchip,ALPS,ROHM,Xilinx,Pulse,ON,Everlight and Freescale. Main products comprise IC,Modules,Potentiometer,IC Socket,Relay,Connector.Our parts cover such applications as commercial,industrial, and automotives areas.

We are looking forward to setting up business relationship with you and hope to provide you with the best service and solution. Let us make a better world for our industry!



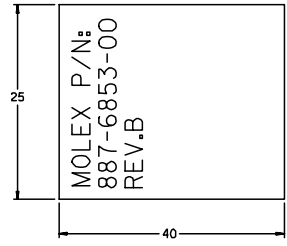
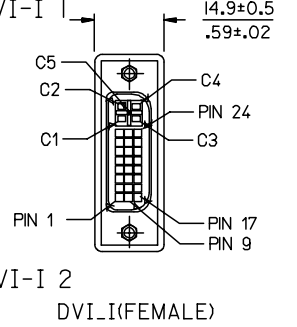
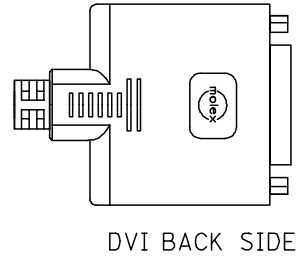
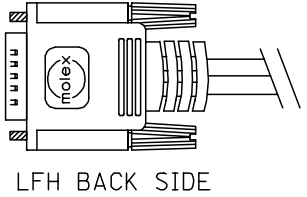
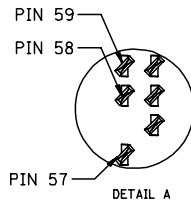
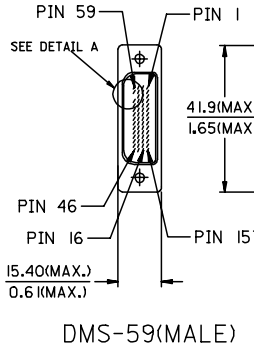
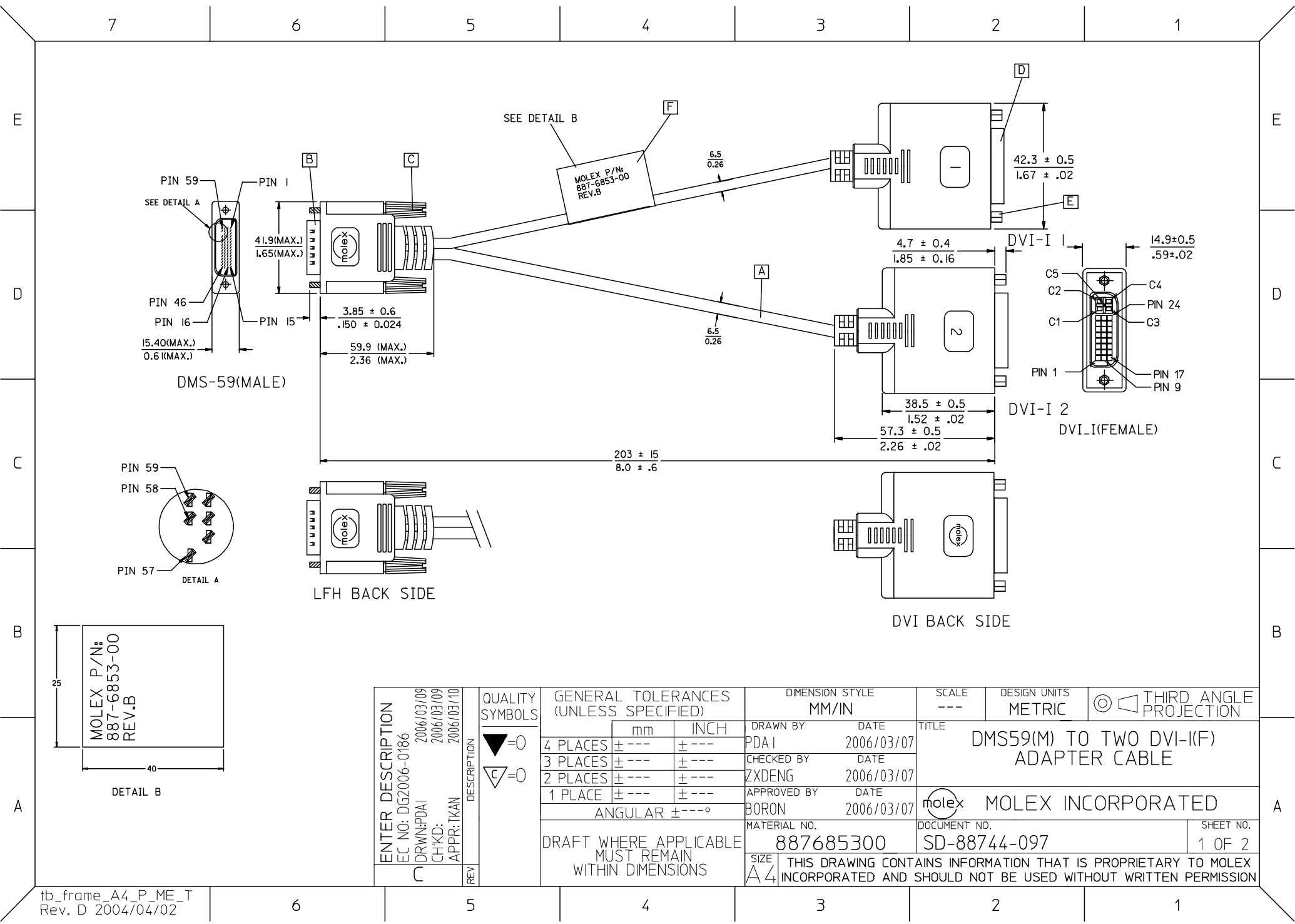
## Contact us

Tel: +86-755-8981 8866 Fax: +86-755-8427 6832

Email & Skype: info@chipsmall.com Web: www.chipsmall.com

Address: A1208, Overseas Decoration Building, #122 Zhenhua RD., Futian, Shenzhen, China





ENTER DESCRIPTION EC NO: DG2006-0186 DRWN:PDAI CHKD: APPR:TKAN	QUALITY SYMBOLS ▽=0 ∇=0	GENERAL TOLERANCES (UNLESS SPECIFIED)		DIMENSION STYLE	SCALE	DESIGN UNITS	THIRD ANGLE PROJECTION
		mm	INCH	MM/IN	---	METRIC	
DESCRIPTION REV	4 PLACES	± ---	± ---	DRAWN BY	DATE	TITLE	
	3 PLACES	± ---	± ---	PDAI	2006/03/07	DMS59(M) TO TWO DVI-I(F) ADAPTER CABLE	
	2 PLACES	± ---	± ---	CHECKED BY	DATE	Molex MOLEX INCORPORATED	
	1 PLACE	± ---	± ---	ZXDENG	2006/03/07	MATERIAL NO. 887685300	
	ANGULAR ± ---°			BORON	2006/03/07	DOCUMENT NO. SD-88744-097	SHEET NO. 1 OF 2
DRAFT WHERE APPLICABLE MUST REMAIN WITHIN DIMENSIONS				THIS DRAWING CONTAINS INFORMATION THAT IS PROPRIETARY TO MOLEX INCORPORATED AND SHOULD NOT BE USED WITHOUT WRITTEN PERMISSION			

CONNECTION DIAGRAM:

SHIELD	SHIELD	GROUND
C5	PIN 1,4&59	GROUND (RED, BLUE, GREEN)
C4	PIN 56	VGA1_HSYNC
C3	PIN 3	VGA1_BLUE
C2	PIN 58	VGA1_GREEN
C1	PIN 2	VGA1_RED
PIN 24	PIN 32	DVI1_TXC-
PIN 23	PIN 31	DVI1_TXC+
PIN 22	PIN 57	DVI1_TXC RTN
PIN 19	PIN 33	DVI1_TX0 RTN
PIN 18	PIN 29	DVI1_TX0+
PIN 17	PIN 30	DVI1_TX0-
PIN 16	PIN 36	DVI1_HPD
PIN 15	PIN 54	SYNCS
PIN 14	PIN 5	+5V
PIN 11	PIN 34	DVI1_TX1 RTN
PIN 10	PIN 27	DVI1_TX1+
PIN 9	PIN 28	DVI1_TX1-
PIN 8	PIN 55	VGA1_VSYNC
PIN 7	PIN 7	DVI1_COC_DATA
PIN 6	PIN 6	DVI1_COC_CLOCK
PIN 3	PIN 35	DVI1_TX2 RTN
PIN 2	PIN 25	DVI1_TX2+
PIN 1	PIN 26	DVI1_TX2-
DVI 1	DMS-59	CABLE FUNCTION

SHIELD	SHIELD	GROUND
C5	PIN 12,15&46	GROUND (BLUE, RED, GREEN)
C4	PIN 50	VGA2_HSYNC
C3	PIN 13	VGA2_BLUE
C2	PIN 47	VGA2_GREEN
C1	PIN 14	VGA2_RED
PIN 24	PIN 44	DVI2_TXC-
PIN 23	PIN 45	DVI2_TXC+
PIN 22	PIN 49	DVI2_TXC RTN
PIN 19	PIN 43	DVI2_TX0 RTN
PIN 18	PIN 16	DVI2_TX0+
PIN 17	PIN 17	DVI2_TX0-
PIN 16	PIN 40	DVI2_HPD
PIN 15	PIN 52	SYNCS
PIN 14	PIN 11	+5V
PIN 11	PIN 42	DVI2_TX1 RTN
PIN 10	PIN 18	DVI2_TX1+
PIN 9	PIN 19	DVI2_TX1-
PIN 8	PIN 51	VGA2_VSYNC
PIN 7	PIN 9	DVI2_COC_DATA
PIN 6	PIN 10	DVI2_COC_CLOCK
PIN 3	PIN 41	DVI2_TX2 RTN
PIN 2	PIN 20	DVI2_TX2+
PIN 1	PIN 21	DVI2_TX2-
DVI 2	DMS-59	CABLE FUNCTION

NOTE:1. OVERMOLD SPECIFICATION

- 1.1 DMS-59 BOOT MOLDED WITH SNOW WHITE PVC RESIN, UL94V-0.
- 1.2 DVI BOOT MOLDED WITH SNOW WHITE PVC RESIN, UL94V-0.
- 2. MECHANICAL SPECIFICATION
  - ▽ 2.1 CABLE SHOULD STAND THE PULL FORCE 89-111N FOR 30 SECONDS WITH NO VISIBLE TERMINATION DAMAGE.
  - 2.2 CABLE SHOULD PASS THE FLEX TEST IN 100 CYCLES AT EACH OF PLANES, PER EIA 364-41, CONDITION 1.
- 3. CABLE ASSEMBLY ELECTRICAL SPECIFICATION
  - ▽ 3.1 HI-POT VOLTAGE: 300VDC FOR 10ms.
  - ▽ 3.2 INSULATION RESISTANCE: 20 MEGA Ohms(MIN.)
  - ▽ 3.3 CONTACT RESISTANCE: 2 Ohms(MAX.)
  - ▽ 3.4 DIFFERENTIAL LINES CHARACTERISTIC IMPEDANCE: 100±7 Ohms @TDR 200 PSEC RISETIME.
  - ▽ 3.5 COAXIAL LINES CHARACTERISTIC IMPEDANCE: 75±10% Ohms @TDR 200 PSEC RISETIME.
  - 3.6 WRAP COPPER TAPE OVER BRAID, THEN CRIMP THE METAL CAN ON COPPER TAPE WITH 360°.
- 4. CONNECTOR PLATING: AU FLASH PLATE.
- 5. SCREW SPEC.: 4-40 UNC.

F	LABEL	I
E	DVI(F) JACK SCREW 4-40 UNC	4
D	DVI.I FEMALE CONNECTOR	2
C	LFH SCREW 4-40 UNC	2
B	DMS-59 PLUG ASSY(NATURE)	1
A	DVI-A/D CABLE	2
ITEM	DESCRIPTION	QTY.

ENTER DESCRIPTION EC NO: DG2006-0186 DRWN:PDAI 2006/03/09 CHKD: 2006/03/09 APPR:TKAN 2006/03/10	QUALITY SYMBOLS	GENERAL TOLERANCES (UNLESS SPECIFIED)	DIMENSION STYLE	SCALE	DESIGN UNITS	THIRD ANGLE PROJECTION															
	▽=0 ▽=0	<table border="1"> <thead> <tr> <th></th> <th>mm</th> <th>INCH</th> </tr> </thead> <tbody> <tr> <td>4 PLACES</td> <td>±---</td> <td>±---</td> </tr> <tr> <td>3 PLACES</td> <td>±---</td> <td>±---</td> </tr> <tr> <td>2 PLACES</td> <td>±---</td> <td>±---</td> </tr> <tr> <td>1 PLACE</td> <td>±---</td> <td>±---</td> </tr> </tbody> </table> ANGULAR ±---°		mm	INCH	4 PLACES	±---	±---	3 PLACES	±---	±---	2 PLACES	±---	±---	1 PLACE	±---	±---	MM/IN	---	METRIC	
		mm	INCH																		
	4 PLACES	±---	±---																		
3 PLACES	±---	±---																			
2 PLACES	±---	±---																			
1 PLACE	±---	±---																			
DRAWN BY: PDAI CHECKED BY: ZXDENG APPROVED BY: BORON	DATE: 2006/03/07 DATE: 2006/03/07 DATE: 2006/03/07	DRAWN BY: PDAI CHECKED BY: ZXDENG APPROVED BY: BORON	TITLE: DMS59(M) TO TWO DVI-I(F) ADAPTER CABLE	MATERIAL NO.: 887685300 DOCUMENT NO.: SD-88744-097	SHEET NO.: 2 OF 2	MOLEX INCORPORATED															
DRAFT WHERE APPLICABLE MUST REMAIN WITHIN DIMENSIONS	SIZE: A4	THIS DRAWING CONTAINS INFORMATION THAT IS PROPRIETARY TO MOLEX INCORPORATED AND SHOULD NOT BE USED WITHOUT WRITTEN PERMISSION																			