



Chipsmall Limited consists of a professional team with an average of over 10 year of expertise in the distribution of electronic components. Based in Hongkong, we have already established firm and mutual-benefit business relationships with customers from,Europe,America and south Asia,supplying obsolete and hard-to-find components to meet their specific needs.

With the principle of “Quality Parts,Customers Priority,Honest Operation,and Considerate Service”,our business mainly focus on the distribution of electronic components. Line cards we deal with include Microchip,ALPS,ROHM,Xilinx,Pulse,ON,Everlight and Freescale. Main products comprise IC,Modules,Potentiometer,IC Socket,Relay,Connector.Our parts cover such applications as commercial,industrial, and automotives areas.

We are looking forward to setting up business relationship with you and hope to provide you with the best service and solution. Let us make a better world for our industry!



## Contact us

Tel: +86-755-8981 8866 Fax: +86-755-8427 6832

Email & Skype: info@chipsmall.com Web: www.chipsmall.com

Address: A1208, Overseas Decoration Building, #122 Zhenhua RD., Futian, Shenzhen, China



7 6 5 4 3 2 1

E

E

D

D

C

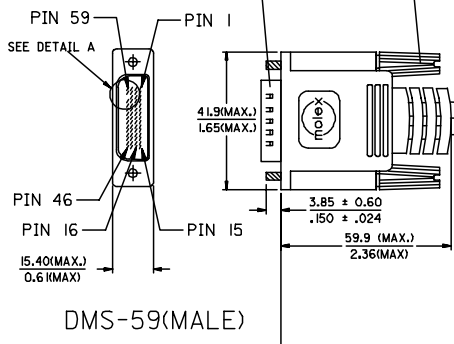
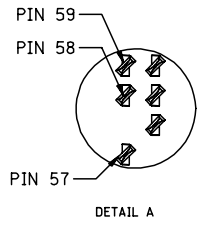
C

B

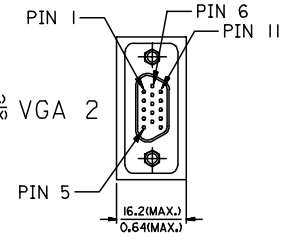
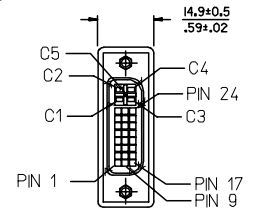
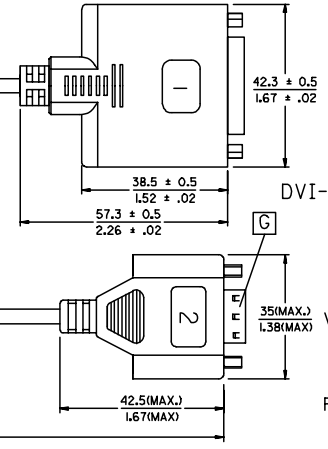
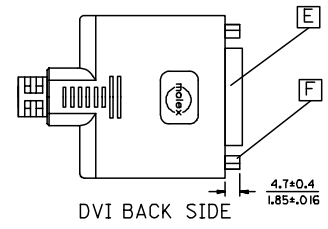
B

A

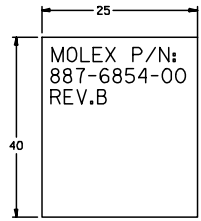
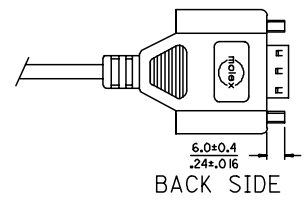
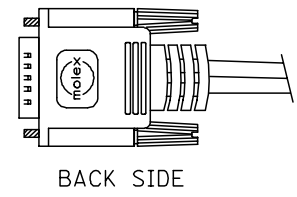
A



SEE DETAIL B



VGA(FEMALE)



ENTER DESCRIPTION EC NO: DG2006-0186 DRWN:PDAI 2006/03/09 CHKD: 2006/03/09 APPR:TKAN 2006/03/10	QUALITY SYMBOLS ▽=0 ◻=0	GENERAL TOLERANCES (UNLESS SPECIFIED)		DIMENSION STYLE MM/IN	SCALE ---	DESIGN UNITS METRIC	THIRD ANGLE PROJECTION	
		4 PLACES ± --- ± --- 3 PLACES ± --- ± --- 2 PLACES ± --- ± --- 1 PLACE ± --- ± ---	mm INCH	DRAWN BY DATE PDAI 2006/03/07	TITLE	DMS59(M) TO DVI-I(F)+ VGA(F) ADAPTE CABLE		
		ANGULAR ± ---°		CHECKED BY DATE ZXDENG 2006/03/07	MOLEX MOLEX INCORPORATED			
		DRAFT WHERE APPLICABLE MUST REMAIN WITHIN DIMENSIONS		APPROVED BY DATE BORON 2006/03/07	MATERIAL NO. 887685400	DOCUMENT NO. SD-88744-098	SHEET NO. 1 OF 2	
				SIZE A4	THIS DRAWING CONTAINS INFORMATION THAT IS PROPRIETARY TO MOLEX INCORPORATED AND SHOULD NOT BE USED WITHOUT WRITTEN PERMISSION			

6

5

4

3

2

1

WIRING DIAGRAM:

SHIELD	SHIELD	GROUND
C5	PIN 1,4,59	GROUND(RED, BLUE, GREEN)
C4	PIN 56	VGA1_HSYNC
C3	PIN 3	VGA1_BLUE
C2	PIN 58	VGA1_GREEN
C1	PIN 2	VGA1_RED
PIN 23	PIN 31	DVII_TXC+
PIN 24	PIN 32	DVII_TXC-
PIN 22	PIN 57	DVII_TXC RTN
PIN 19	PIN 33	DVII_TX0 RTN
PIN 18	PIN 29	DVII_TX0+
PIN 17	PIN 30	DVII_TX0-
PIN 16	PIN 36	DVII_HPD
PIN 15	PIN 54	GROUND
PIN 14	PIN 5	+5V
PIN 11	PIN 34	DVII_TX1 RTN
PIN 10	PIN 27	DVII_TX1+
PIN 9	PIN 28	DVII_TX1-
PIN 8	PIN 55	VGA1_VSYNC
PIN 7	PIN 7	DVII_DDC_DATA
PIN 6	PIN 6	DVII_DDC_CLOCK
PIN 3	PIN 35	DVII_TX2 RTN
PIN 2	PIN 25	DVII_TX2+
PIN 1	PIN 26	DVII_TX2-
DVI_I	DMS-59	CABLE FUNCTION

SHIELD	SHIELD	GROUND
PIN 15	PIN 10	VGA_SCL
PIN 14	PIN 51	VGA_VSYNC
PIN 13	PIN 50	VGA_HSYNC
PIN 12	PIN 9	VGA_SDA
PIN 10	PIN 52	GROUND(SYNCS)
PIN 9	PIN 11	+5V
PIN 8	PIN 12	GROUND(BLUE)
PIN 7	PIN 46	GROUND(GREEN)
PIN 6	PIN 15	GROUND(RED)
PIN 5	PIN 49	GROUND(ANALOG)
PIN 3	PIN 13	VGA_BLUE
PIN 2	PIN 47	VGA_GREEN
PIN 1	PIN 14	VGA_RED
VGA2	DMS-59	CABLE FUNCTION

NOTE:1. OVERMOLD SPECIFICATION

- 1.1 DMS-59 BOOT MOLDED WITH SNOW WHITE PVC RESIN, UL94V-0.
- 1.2 VGA BOOT MOLDED WITH BLUE PVC RESIN, UL94V-0.
- 1.3 DVI.I BOOT MOLDED WITH SNOW WHITE PVC RESIN: , UL94V-0.
- 2. MECHANICAL SPECIFICATION
  - ▽ 2.1 CABLE SHOULD STAND THE PULL FORCE 89-11IN FOR 30 SECONDS WITH NO VISIBLE TERMINATION DAMAGE.
  - 2.2 CABLE SHOULD PASS THE FLEX TEST IN 100 CYCLES AT EACH OF PLANES, PER EIA 364-41, CONDITION I.
- 3. CABLE ASSEMBLY ELECTRICAL SPECIFICATION
  - ▽ 3.1 HI-POT VOLTAGE: 300VDC FOR 10ms.
  - ▽ 3.2 INSULATION RESISTANCE: 20 MEGA Ohms PER MIN.
  - ▽ 3.3 CONNECTION RESISTANCE: 2 Ohms MAX.
  - ▽ 3.4 DIFFERENTIAL LINES CHARACTERISTIC IMPEDANCE: 100±7 Ohms. @TDR 200 PSEC RISETIME.
  - ▽ 3.5 COAXIAL LINES CHARACTERISTIC IMPEDANCE: 75±10% Ohms @TDR 200 PSEC RISETIME.
  - 3.6 WRAP COPPER TAPE OVER BRAID, THEN CRIMP THE METAL CAN ON COPPER TAPE WITH 360°.
- 4. CONNECTOR PLATING: GOLD FLASH PLATING.
- 5. SCREW SPEC.: 4-40 UNC.

MATERIAL LIST:

H	LABEL	I
G	VGA D-SUB CONNECTOR(FEMALE)	1
F	DVI(F) JACK SCREW	2
E	DVI.I FEMALE CONNECTOR	1
D	LFH THUMB SCREW 4-40 UNC	2
C	DMS-59 PLUG ASSY(NATURE)	1
B	DVI-A/D CABLE BLACK	1
A	DVI ANALOG CABLE BLACK	1
ITEM	DESCRIPTION	QTY.

ENTER DESCRIPTION EC NO: DG2006-0186 DRWN: PDAI CHKD: APPR: TKAN	2006/03/09 2006/03/09 2006/03/10	QUALITY SYMBOLS ▽=0 ▽=0	GENERAL TOLERANCES (UNLESS SPECIFIED)		DIMENSION STYLE MM/IN		SCALE ---	DESIGN UNITS METRIC	THIRD ANGLE PROJECTION		
	4 PLACES ± --- ± ---		3 PLACES ± --- ± ---	2 PLACES ± --- ± ---	1 PLACE ± --- ± ---	ANGULAR ± ---°	DRAWN BY PDAI	DATE 2006/03/07	TITLE DMS59(M) TO DVI-I(F)+ VGA(F) ADAPTE CABLE		
	DRAFT WHERE APPLICABLE MUST REMAIN WITHIN DIMENSIONS					CHECKED BY ZXDENG	DATE 2006/03/07	APPROVED BY BORON			
						MATERIAL NO. 887685400	DATE 2006/03/07	DOCUMENT NO. SD-88744-098	SHEET NO. 2 OF 2		