



Chipsmall Limited consists of a professional team with an average of over 10 year of expertise in the distribution of electronic components. Based in Hongkong, we have already established firm and mutual-benefit business relationships with customers from,Europe,America and south Asia,supplying obsolete and hard-to-find components to meet their specific needs.

With the principle of “Quality Parts,Customers Priority,Honest Operation,and Considerate Service”,our business mainly focus on the distribution of electronic components. Line cards we deal with include Microchip,ALPS,ROHM,Xilinx,Pulse,ON,Everlight and Freescale. Main products comprise IC,Modules,Potentiometer,IC Socket,Relay,Connector.Our parts cover such applications as commercial,industrial, and automotives areas.

We are looking forward to setting up business relationship with you and hope to provide you with the best service and solution. Let us make a better world for our industry!



Contact us

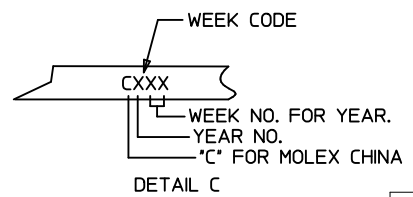
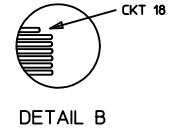
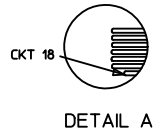
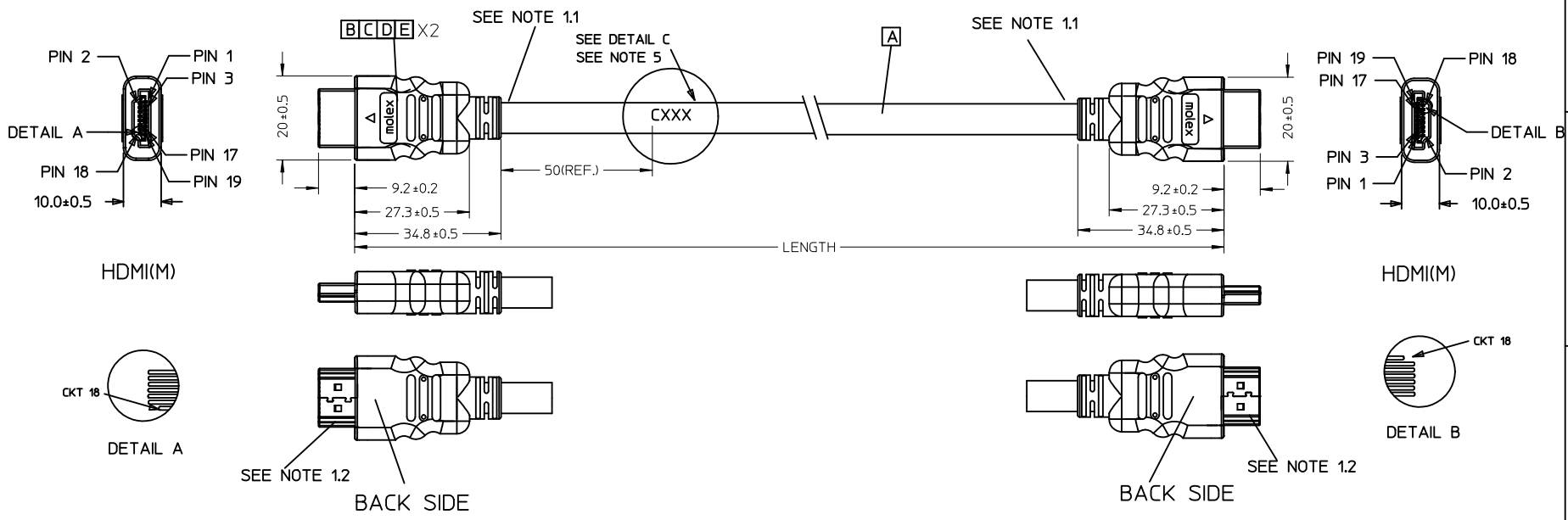
Tel: +86-755-8981 8866 Fax: +86-755-8427 6832

Email & Skype: info@chipsmall.com Web: www.chipsmall.com

Address: A1208, Overseas Decoration Building, #122 Zhenhua RD., Futian, Shenzhen, China



7 6 5 4 3 2 1



887689930	HDMI TO HDMI CABLE ASS'Y,5M	5000 ± 100	BLACK	6.0MM(TMDS-AWG#30)
887689920	HDMI TO HDMI CABLE ASS'Y,3M	3000 ± 80	BLACK	6.0MM(TMDS-AWG#30)
887689910	HDMI TO HDMI CABLE ASS'Y,2M	2000 ± 60	BLACK	6.0MM(TMDS-AWG#30)
887689900	HDMI TO HDMI CABLE ASS'Y,1M	1000 ± 30	BLACK	6.0MM(TMDS-AWG#30)
MX P/N	DESCRIPTION	LENGTH	CABLE COLOR	CABLE OD

ENTER DESCRIPTION EC NO: DG2011-0371 DRWN:FZHANG01 CHKD:JLJU13 APPR:ZXDENG	DESCRIPTION 2011/04/08 2011/04/08 2011/04/19	QUALITY SYMBOLS ▽=0 ◻=0	GENERAL TOLERANCES (UNLESS SPECIFIED)		DIMENSION STYLE MM ONLY		SCALE ---	DESIGN UNITS METRIC	THIRD ANGLE PROJECTION
					DRAWN BY FZHANG01	DATE 2011/04/08	TITLE HDMI(M) TO HDMI(M) CABLE ASS'Y		
					CHECKED BY LPNING	DATE 2011/04/08			
					APPROVED BY ZXDENG	DATE 2011/04/19	MOLEX INCORPORATED		
					MATERIAL NO. SEE TABLE				
DRAFT WHERE APPLICABLE MUST REMAIN WITHIN DIMENSIONS			SIZE A 4		THIS DRAWING CONTAINS INFORMATION THAT IS PROPRIETARY TO MOLEX INCORPORATED AND SHOULD NOT BE USED WITHOUT WRITTEN PERMISSION				

6 5 4 3 2 1

7

6

5

4

3

2

1

NOTE:

1. OVERMOLD SPECIFICATION
 - 1.1 HDMI INNER MOLDED WITH PVC RESIN
HDMI OUTER MOLDED WITH PVC RESIN
 - 1.2 DUST COVER MOLDED WITH PE
2. PRODUCT ELECTRICAL SPECIFICATION REFER TO HDMI SPECIFICATION
3. CABLE CONSTRUCTION
(AWG#30*1P+D)*4 + AWG#30*1P + AWG#28*5C, 6.0MMOD
4. THE CODE PLEASE BE PRINTED ON THE SPACE
5. THIS PRODUCT MUST MEET EU CHEMICAL SUBSTANCE SPECIFICATION FOR PRODUCTS. (EU 2002/95/EC)

WIRE DIAGRAM:

SHIELD	SHIELD	OVERALL SHIELD	GROUND
PIN 19	PIN 19	PINK	HOT PLUG DETECT
PIN 18	PIN 18	ORANGE	+5V POWER
PIN 17	PIN 17	YELLOW	DDC/CEC GROUND
PIN 16	PIN 16	WHITE	SDA
PIN 15	PIN 15	RED	SCL
PIN 14	PIN 14	VIOLET	RESERVED
PIN 13	PIN 13	GRAY	CEC
PIN 12	PIN 12	WHITE	TMDS CLOCK-
PIN 11	PIN 11	BRAID	TMDS CLOCK SHIELD
PIN 10	PIN 10	BLACK	TMDS CLOCK+
PIN 9	PIN 9	WHITE	TMDS DATA 0-
PIN 8	PIN 8	BRAID	TMDS DATA 0 SHIELD
PIN 7	PIN 7	BLUE	TMDS DATA 0+
PIN 6	PIN 6	WHITE	TMDS DATA 1-
PIN 5	PIN 5	BRAID	TMDS DATA 1 SHIELD
PIN 4	PIN 4	GREEN	TMDS DATA 1+
PIN 3	PIN 3	WHITE	TMDS DATA 2-
PIN 2	PIN 2	BRAID	TMDS DATA 2 SHIELD
PIN 1	PIN 1	RED	TMDS DATA 2+
HDMI	HDMI	COLOR	CABLE FUNCTION

E	PRE-CUT C.Foil 47X23mm T=25U		2
D	COPPER FOIL 45*17MM		2
C	HDMI 19P MALE,30U"Au Solder Type		2
B	Metal Shell For HDMI 19P Male		2
A	(4P+1P)X30+5CX28,ALSH,PVC,BK,6.0,UL20276 (SEE TABLE)		1
ITEM	DESCRIPTION	L	QTY.

ENTER DESCRIPTION EC NO: DG2011-0371 DRWN:FZHANG01 2011/04/08 CHKD:JLUI13 2011/04/08 APPR:ZXDENG 2011/04/19	QUALITY SYMBOLS ▽=0 ▽=0	GENERAL TOLERANCES (UNLESS SPECIFIED)		DIMENSION STYLE MM ONLY		SCALE ---	DESIGN UNITS METRIC	THIRD ANGLE PROJECTION		
			mm	INCH	DRAWN BY FZHANG01	DATE 2011/04/08	TITLE HDMI(M) TO HDMI(M) CABLE ASS'Y			
		4 PLACES	±---	±---	CHECKED BY LPNING	DATE 2011/04/08	MOLEX INCORPORATED			
		3 PLACES	±---	±---	APPROVED BY ZXDENG	DATE 2011/04/19				
2 PLACES	±---	±---	ANGULAR ±---°		MATERIAL NO. SEE TABLE	DOCUMENT NO. SD-88768-99XX	SHEET NO. 2 OF 2			
1 PLACE	±---	±---	DRAFT WHERE APPLICABLE MUST REMAIN WITHIN DIMENSIONS		SIZE A4	THIS DRAWING CONTAINS INFORMATION THAT IS PROPRIETARY TO MOLEX INCORPORATED AND SHOULD NOT BE USED WITHOUT WRITTEN PERMISSION				

6

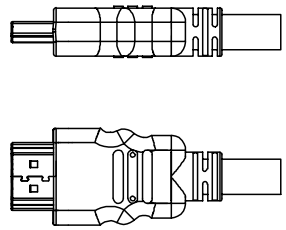
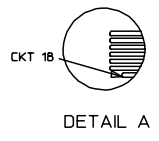
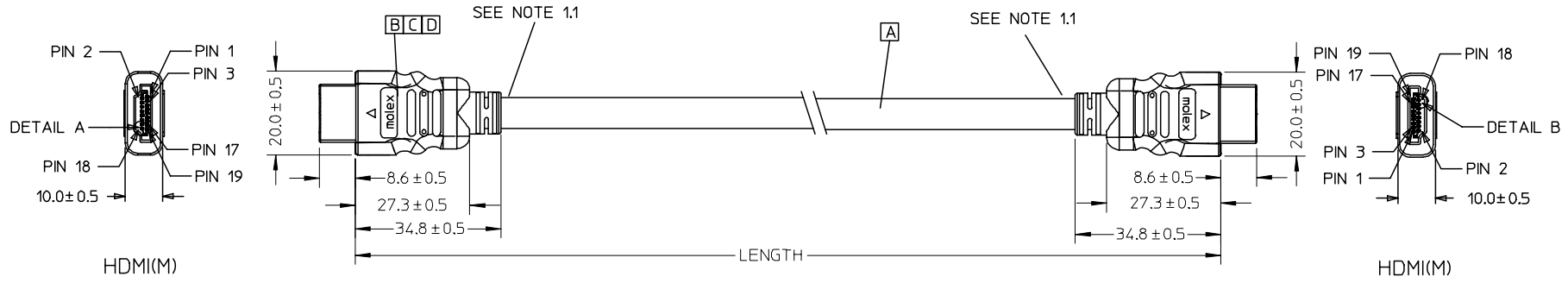
5

4

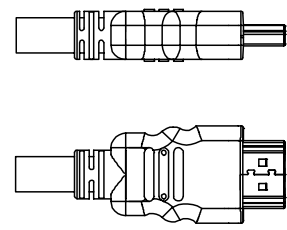
3

2

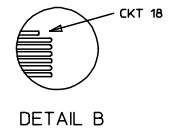
1



BACK SIDE



BACK SIDE



88768-9930	HDMI TO HDMI CABLE ASS'Y,5M	5000 ± 100	BLACK	6.0MM(TMDS-AWG#30)	887808583
88768-9920	HDMI TO HDMI CABLE ASS'Y,3M	3000 ± 80	BLACK	6.0MM(TMDS-AWG#30)	887808583
88768-9910	HDMI TO HDMI CABLE ASS'Y,2M	2000 ± 60	BLACK	6.0MM(TMDS-AWG#30)	887808583
88768-9900	HDMI TO HDMI CABLE ASS'Y,1M	1000 ± 30	BLACK	6.0MM(TMDS-AWG#30)	887808583
MX P/N	DESCRIPTION	LENGTH	CABLE COLOR	CABLE OD	CABLE P/N

ENTER DESCRIPTION EC NO: DG2006-0144 T1 DRWN: JFZHENG 2005/12/27 CHKD: 2005/12/30 APPR: DQLUO 2006/01/16	QUALITY SYMBOLS = 0 = 0	GENERAL TOLERANCES (UNLESS SPECIFIED)		DIMENSION STYLE		SCALE	DESIGN UNITS	THIRD ANGLE PROJECTION	
			mm	INCH	MM ONLY		---	METRIC	
		4 PLACES	± ---	± ---	DRAWN BY	DATE	TITLE		
		3 PLACES	± ---	± ---	JFZHENG	2005/12/26	AWG30 HDMI TO HDMI CABLE ASS'Y		
2 PLACES	± ---	± ---	CHECKED BY	DATE					
1 PLACE	± ---	± ---	JFZHENG	2005/12/26	MOLEX INCORPORATED				
ANGULAR ± ---°		APPROVED BY		DATE					
DRAFT WHERE APPLICABLE MUST REMAIN WITHIN DIMENSIONS		DQLUO		2005/12/26	MATERIAL NO.		DOCUMENT NO.	SHEET NO.	
		ENTER PART		SD-887689910		1 OF 00			
SIZE 4 THIS DRAWING CONTAINS INFORMATION THAT IS PROPRIETARY TO MOLEX INCORPORATED AND SHOULD NOT BE USED WITHOUT WRITTEN PERMISSION									

NOTE:

1. OVERMOLD SPECIFICATION:
 - 1.1 HDMI INNERMOLD WITH BK PVC 887800019
 - 1.2 HDMI OVERMOLD WITH PVC 887800150
2. MECHANICAL SPECIFICATION:
 - CABLE SHOULD STAND THE PULL FORCE 89-111N FOR 30 SECONDS WITH NO VISIBLE TERMINATION DAMAGE.
3. PRODUCT ELECTRICAL SPECIFICATION
 - 3.1 DIELECTRIC STRENGTH.
 - 3.2 INSULATION RESISTANCE.
 - 3.3 CONDUCTIVE RESISTANCE.
 - 3.4 TMDS Signals Time Domain Impedence
 - 3.5 TMDS Signals Time Domain Crosstalk:FEXT
 - 3.6 TMDS Signals Skew
 - 3.7 Attenuation

REFER TO ES-002 ELECTRICAL SPECIFICATION FOR DETAILS.

4.CABLE CONSTRUCTION

- ' (AWG#30*1P+D)*4 + AWG#30*1P + AWG#28*5C, 6.0MMOD'
5. THIS PRODUCT MUST MEET ROHS COMPLIANCE.

WIRE DIAGRAM:

SHIELD	SHIELD	OVERALL SHIELD	GROUND
PIN 19	PIN 19	PINK	HOT PLUG DETECT
PIN 18	PIN 18	ORANGE	+5V POWER
PIN 17	PIN 17	YELLOW	DDC/CEC GROUND
PIN 16	PIN 16	WHITE	SDA
PIN 15	PIN 15	RED	SCL
PIN 14	PIN 14	VIOLET	RESERVED
PIN 13	PIN 13	GRAY	CEC
PIN 12	PIN 12	WHITE	TMDS CLOCK-
PIN 11	PIN 11	BRAID	TMDS CLOCK SHIELD
PIN 10	PIN 10	WHITE/BLACK	TMDS CLOCK+
PIN 9	PIN 9	WHITE	TMDS DATA 0-
PIN 8	PIN 8	BRAID	TMDS DATA 0 SHIELD
PIN 7	PIN 7	WHITE/BLUE	TMDS DATA 0+
PIN 6	PIN 6	WHITE	TMDS DATA 1-
PIN 5	PIN 5	BRAID	TMDS DATA 1 SHIELD
PIN 4	PIN 4	WHITE/GREEN	TMDS DATA 1+
PIN 3	PIN 3	WHITE	TMDS DATA 2-
PIN 2	PIN 2	BRAID	TMDS DATA 2 SHIELD
PIN 1	PIN 1	WHITE/RED	TMDS DATA 2+
HDMI	HDMI	COLOR	CABLE FUNCTION

D	HDMI METAL PLATED 47152-6009		2
C	HDMI METAL CAN 47152-4001		2
B	HDMI HOUSING ASSY 47152-1100		2
A	HDMI SINGLE LINK CABLE (SEE TABLE)		1
ITEM	DESCRIPTION	L	QTY.

ENTER DESCRIPTION EC NO: DG2006-0144 TIDRWN: JFZHENG 2005/12/27 CHKD: 2005/12/30 APPR: DQLUO 2006/01/16	DESCRIPTION REV	QUALITY SYMBOLS ▽=0 ◻=0	GENERAL TOLERANCES (UNLESS SPECIFIED)		DIMENSION STYLE MM ONLY		SCALE ---	DESIGN UNITS METRIC	THIRD ANGLE PROJECTION																
			<table border="1"> <thead> <tr> <th></th> <th>mm</th> <th>INCH</th> </tr> </thead> <tbody> <tr> <td>4 PLACES</td> <td>±---</td> <td>±---</td> </tr> <tr> <td>3 PLACES</td> <td>±---</td> <td>±---</td> </tr> <tr> <td>2 PLACES</td> <td>±---</td> <td>±---</td> </tr> <tr> <td>1 PLACE</td> <td>±---</td> <td>±---</td> </tr> </tbody> </table>		mm	INCH	4 PLACES	±---	±---	3 PLACES	±---	±---	2 PLACES	±---	±---	1 PLACE	±---	±---	DRAWN BY JFZHENG	DATE 2005/12/26	TITLE AWG30 HDMI TO HDMI CABLE ASS'Y				
			mm	INCH																					
		4 PLACES	±---	±---																					
3 PLACES	±---	±---																							
2 PLACES	±---	±---																							
1 PLACE	±---	±---																							
	DRAFT WHERE APPLICABLE MUST REMAIN WITHIN DIMENSIONS	CHECKED BY JFZHENG	DATE 2005/12/26																						
			ANGULAR ±---°		APPROVED BY DQLUO	DATE 2005/12/26	MOLEX MOLEX INCORPORATED																		
					MATERIAL NO. ENTER PART	DOCUMENT NO. SD-887689910			SHEET NO. 2 OF 00																

THIS DRAWING CONTAINS INFORMATION THAT IS PROPRIETARY TO MOLEX INCORPORATED AND SHOULD NOT BE USED WITHOUT WRITTEN PERMISSION