



Chipsmall Limited consists of a professional team with an average of over 10 year of expertise in the distribution of electronic components. Based in Hongkong, we have already established firm and mutual-benefit business relationships with customers from,Europe,America and south Asia,supplying obsolete and hard-to-find components to meet their specific needs.

With the principle of “Quality Parts,Customers Priority,Honest Operation,and Considerate Service”,our business mainly focus on the distribution of electronic components. Line cards we deal with include Microchip,ALPS,ROHM,Xilinx,Pulse,ON,Everlight and Freescale. Main products comprise IC,Modules,Potentiometer,IC Socket,Relay,Connector.Our parts cover such applications as commercial,industrial, and automotives areas.

We are looking forward to setting up business relationship with you and hope to provide you with the best service and solution. Let us make a better world for our industry!



Contact us

Tel: +86-755-8981 8866 Fax: +86-755-8427 6832

Email & Skype: info@chipsmall.com Web: www.chipsmall.com

Address: A1208, Overseas Decoration Building, #122 Zhenhua RD., Futian, Shenzhen, China



"High Frequency Ceramic Solutions"

Preliminary

892 MHz Diplexer

P/N 0892DP15A1940

Detail Specification: 05/13/10

Page 1 of 2

General Specifications

Part Number	0892DP15A1940
-------------	---------------

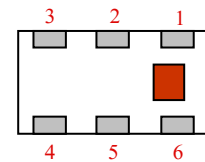
Passband (MHz)	Insertion Loss (dB)	Attenuation I	Isolation (dB)	Return Loss (dB)
824 ~ 960	0.9 max	18 min. @ 1648 ~ 1830 MHz	16 min.	15 min.
		22 min. @ 2472 ~ 2745 MHz		
		15 min. @ 3300 ~ 4000 MHz		
		15 min. @ 5000 ~ 8500 MHz		
1710 ~ 2170	1.0 max	19 min. @ 3420 ~ 3820 MHz	20 min.	13 min.
		20 min. @ 5130 ~ 5730 MHz		
		15 min. @ 6000 ~ 8000 MHz		

Input Power	2 Watts max.
Impedance	50 Ω
Operating Temp	-40 to +85°C
Storage Temp	+5 to +35°C, Humidity 45~75%RH *
Reel Quantity	4000

* 12 months in vacuum sealed bag and 1 week after opened

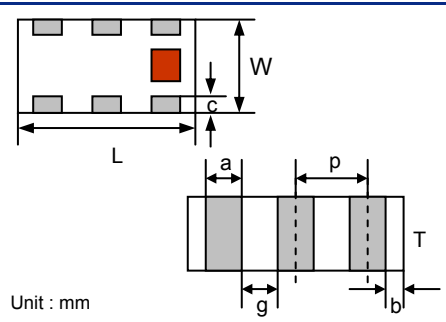
Terminal Configuration

No.	Function
1	Higher Freq. Port (P3)
2	GND
3	Lower Freq. Port (P2)
4	GND
5	Common Port (P1)
6	GND



Mechanical Dimensions

	In	mm
L	0.079 ± 0.004	2.00 ± 0.10
W	0.049 ± 0.004	1.25 ± 0.10
T	0.018 ± 0.020	0.45 ± 0.50
a	0.012 ± 0.004	0.30 ± 0.10
b	0.008 ± 0.004	0.20 ± 0.10
c	0.012 +.004/-0.008	0.30 +0.1/-0.2
g	0.014 ± 0.004	0.35 ± 0.10
p	0.026 ± 0.002	0.65 ± 0.05

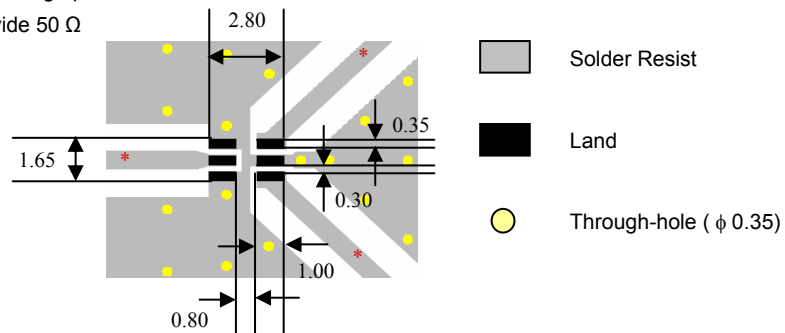


Mounting Considerations

Mount these devices with brown mark facing up.

*Line width should be designed to provide 50 Ω impedance matching characteristics.

Units: mm



Johanson Technology, Inc. reserves the right to make design changes without notice.

All sales are subject to Johanson Technology, Inc. terms and conditions.

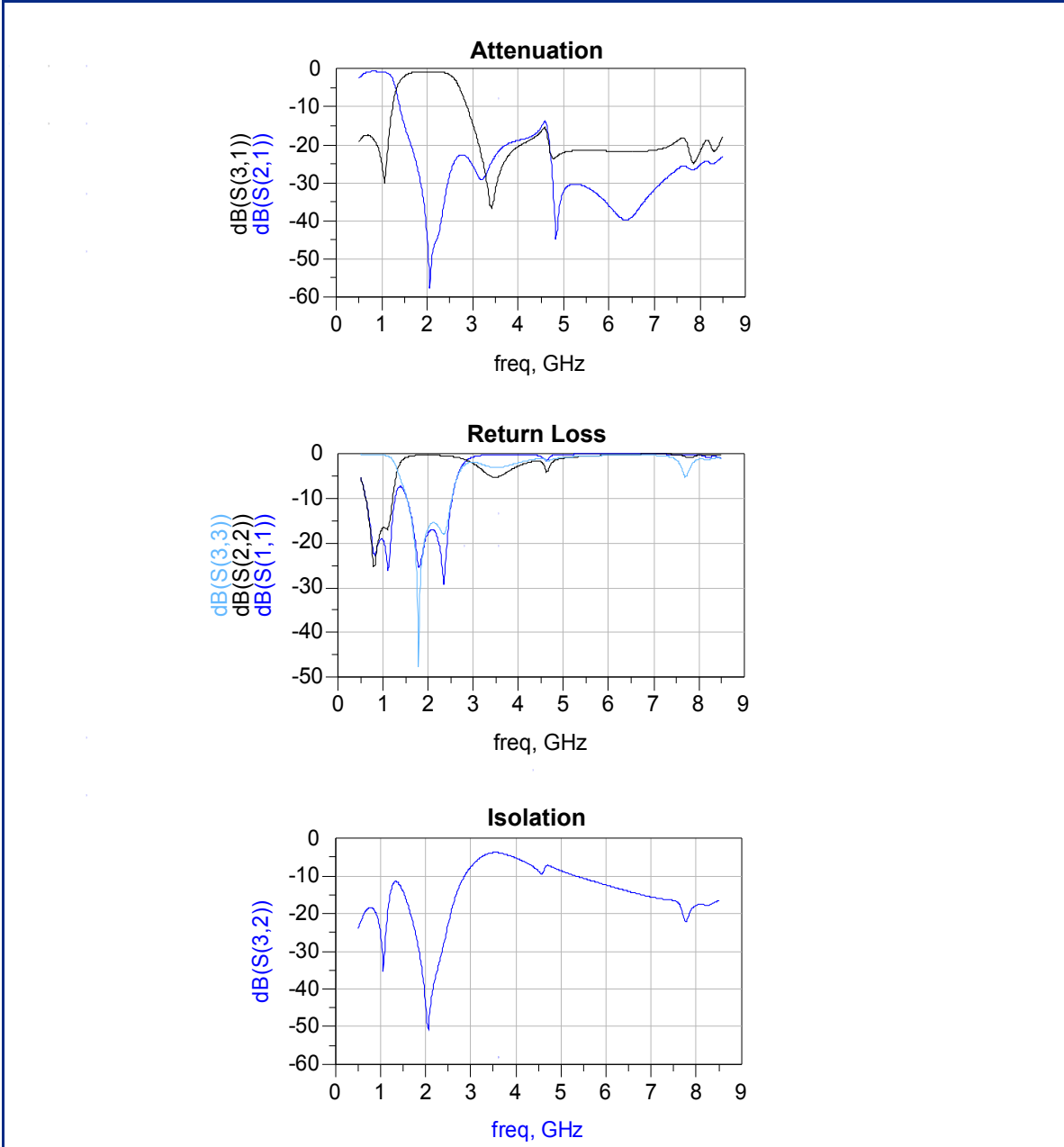


www.johansontechnology.com

4001 Calle Tecate • Camarillo, CA 93012 • TEL 805.389.1166 FAX 805.389.1821

2010 Johanson Technology, Inc. All Rights Reserved

Typical Electrical Performance (T=25°C)



Johanson Technology, Inc. reserves the right to make design changes without notice.
 All sales are subject to Johanson Technology, Inc. terms and conditions.