



Chipsmall Limited consists of a professional team with an average of over 10 year of expertise in the distribution of electronic components. Based in Hongkong, we have already established firm and mutual-benefit business relationships with customers from,Europe,America and south Asia,supplying obsolete and hard-to-find components to meet their specific needs.

With the principle of “Quality Parts,Customers Priority,Honest Operation,and Considerate Service”,our business mainly focus on the distribution of electronic components. Line cards we deal with include Microchip,ALPS,ROHM,Xilinx,Pulse,ON,Everlight and Freescale. Main products comprise IC,Modules,Potentiometer,IC Socket,Relay,Connector.Our parts cover such applications as commercial,industrial, and automotives areas.

We are looking forward to setting up business relationship with you and hope to provide you with the best service and solution. Let us make a better world for our industry!



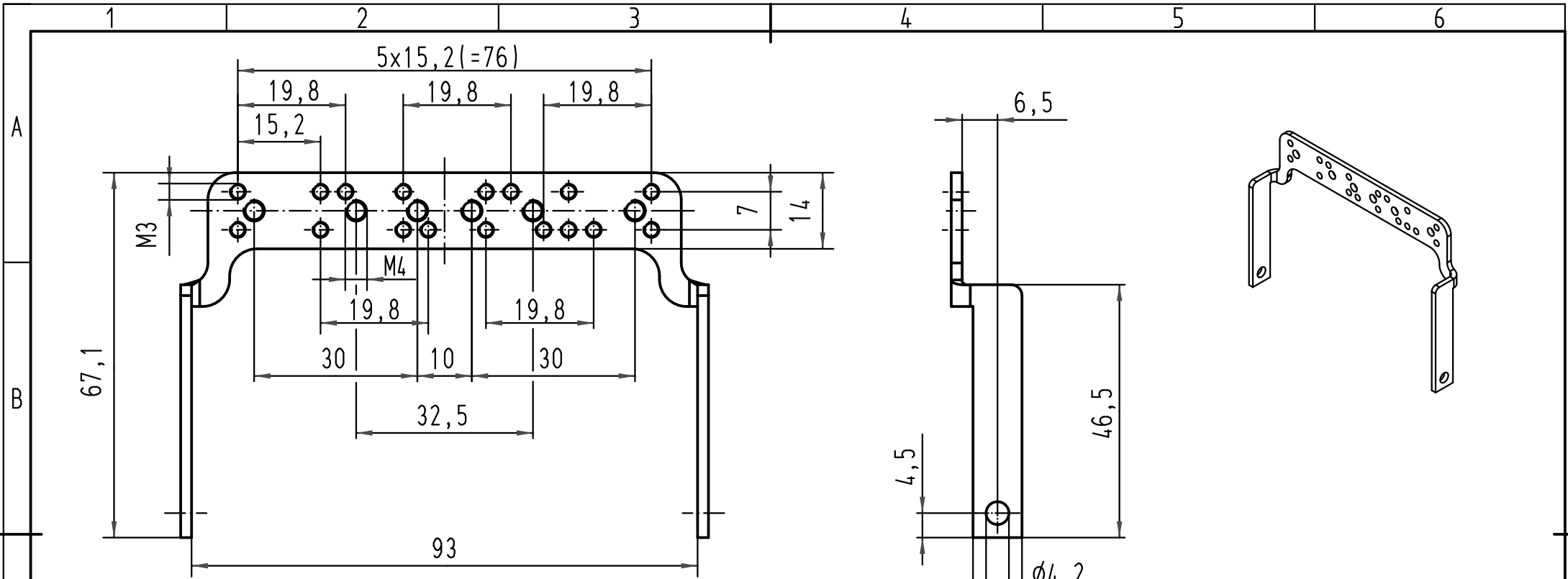
## Contact us

Tel: +86-755-8981 8866 Fax: +86-755-8427 6832

Email & Skype: info@chipsmall.com Web: www.chipsmall.com

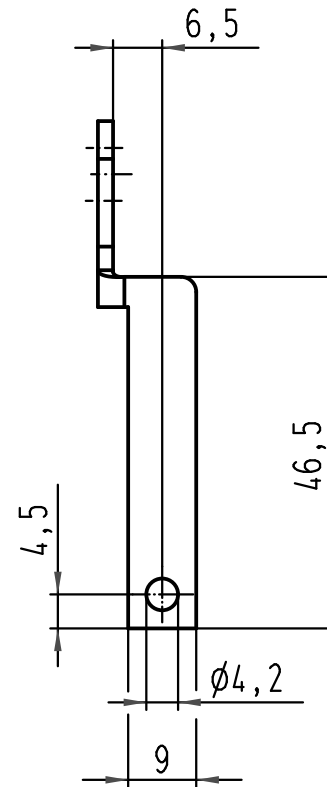
Address: A1208, Overseas Decoration Building, #122 Zhenhua RD., Futian, Shenzhen, China





passend für Han 24E, 24ES, 24ESS, 46EE, 64D und 108DD Einsätze  
 zur Kombination mit Han 24B Anbaugehäuse und Han Snap/  
*fits for Han 24E, 24ES, 24ESS, 46EE, 64D und 108DD inserts  
 for combination with Han 24B housings and Han Snap*

Lieferumfang: Bügel mit M4 Schrauben zur Befestigung am Einsatz/  
*range of delivery: lever with M4 screws to mount on the inserts*



Material: Stahl, verzinkt/  
*material: steel, zinc-plated*

Lochbild passend für Schellen TB 09 00 000 534./  
*pinhole image for cable clamp TB 09 00 000 534.*

All Dimensions in mm Original Size DIN A 4		Techn. Character.			Nicht tolerierte Maß/Free size tolerances	
			Dat.	Name	Maßstab/Scale	Han Schellenbügel Han 24B/ <i>clamp frame for shielded cables                  Han 24B</i>
		Detail.	28.04.09	Bor		
		Insp.		Be		
		Stand.				
			HARTING Electric GmbH & Co. KG			TB 09 00 000 5210 Sub. TB 09 00 000 5210 v. 03.07.96
A			D-32339 Espelkamp			
Mod.	Dat.	Name				Blatt/page