



Chipsmall Limited consists of a professional team with an average of over 10 year of expertise in the distribution of electronic components. Based in Hongkong, we have already established firm and mutual-benefit business relationships with customers from,Europe,America and south Asia,supplying obsolete and hard-to-find components to meet their specific needs.

With the principle of “Quality Parts,Customers Priority,Honest Operation,and Considerate Service”,our business mainly focus on the distribution of electronic components. Line cards we deal with include Microchip,ALPS,ROHM,Xilinx,Pulse,ON,Everlight and Freescale. Main products comprise IC,Modules,Potentiometer,IC Socket,Relay,Connector.Our parts cover such applications as commercial,industrial, and automotives areas.

We are looking forward to setting up business relationship with you and hope to provide you with the best service and solution. Let us make a better world for our industry!



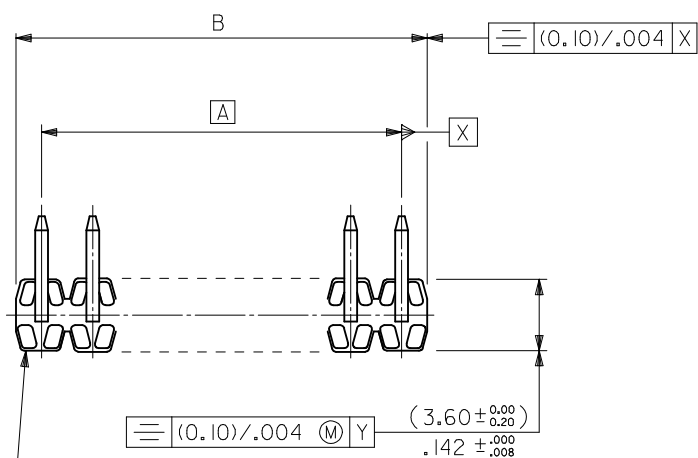
## Contact us

Tel: +86-755-8981 8866 Fax: +86-755-8427 6832

Email & Skype: info@chipsmall.com Web: www.chipsmall.com

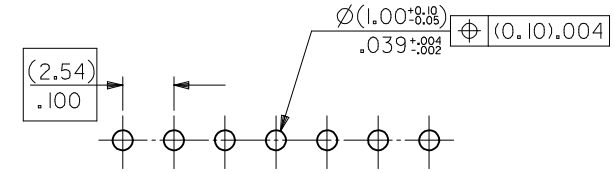
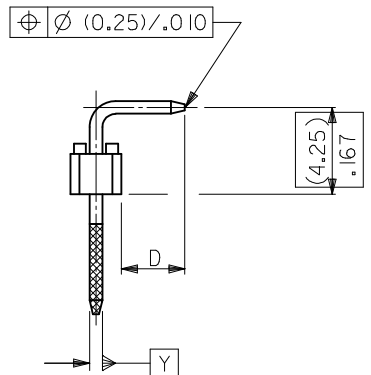
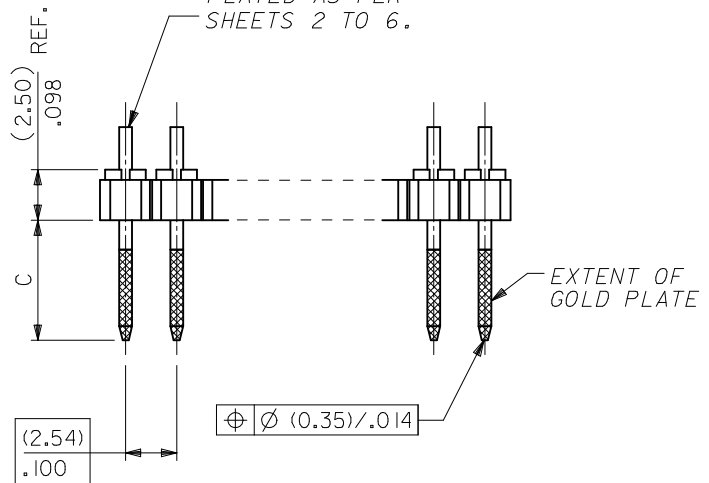
Address: A1208, Overseas Decoration Building, #122 Zhenhua RD., Futian, Shenzhen, China





WAFER: 15% GLASS FILLED POLYESTER TO UL 94V-0. COLOUR: BLACK.

PINS: (0.635) / .025 SQ. BRASS WIRE. PLATED AS PER SHEETS 2 TO 6.



RECOMMENDED PCB HOLE PATTERN

CKT SIZE	DIM. "A"	DIM. "B" (±0.20) ±.008	CKT SIZE	DIM. "A"	DIM. "B" (±0.20) ±.008
1X 1		(2.54) .100	1X21	(50.80) 2.000	(53.34) 2.100
1X 2	(2.54) .100	(5.08) .200	1X22	(53.34) 2.100	(55.88) 2.200
1X 3	(5.08) .200	(7.62) .300	1X23	(55.88) 2.200	(58.42) 2.300
1X 4	(7.62) .300	(10.16) .400	1X24	(58.42) 2.300	(60.96) 2.400
1X 5	(10.16) .400	(12.70) .500	1X25	(60.96) 2.400	(63.50) 2.500
1X 6	(12.70) .500	(15.24) .600	1X26	(63.50) 2.500	(66.04) 2.600
1X 7	(15.24) .600	(17.78) .700	1X27	(66.04) 2.600	(68.58) 2.700
1X 8	(17.78) .700	(20.32) .800	1X28	(68.58) 2.700	(71.12) 2.800
1X 9	(20.32) .800	(22.86) .900	1X29	(71.12) 2.800	(73.66) 2.900
1X10	(22.86) .900	(25.40) 1.000	1X30	(73.66) 2.900	(76.20) 3.000
1X11	(25.40) 1.000	(27.94) 1.100	1X31	(76.20) 3.000	(78.74) 3.100
1X12	(27.94) 1.100	(30.48) 1.200	1X32	(78.74) 3.100	(81.28) 3.200
1X13	(30.48) 1.200	(33.02) 1.300	1X33	(81.28) 3.200	(83.82) 3.300
1X14	(33.02) 1.300	(35.56) 1.400	1X34	(83.82) 3.300	(86.36) 3.400
1X15	(35.56) 1.400	(38.10) 1.500	1X35	(86.36) 3.400	(88.90) 3.500
1X16	(38.10) 1.500	(40.64) 1.600	1X36	(88.90) 3.500	(91.44) 3.600
1X17	(40.64) 1.600	(43.18) 1.700	1X37	(91.44) 3.600	(93.98) 3.700
1X18	(43.18) 1.700	(45.72) 1.800	1X38	(93.98) 3.700	(96.52) 3.800
1X19	(45.72) 1.800	(48.26) 1.900	1X39	(96.52) 3.800	(99.06) 3.900
1X20	(48.26) 1.900	(50.80) 2.000	1X40	(99.06) 3.900	(101.60) 4.000

- NOTES
- PLEASE REFER TO SHT 2 FOR PLATING DETAILS.
  - PLEASE REFER TO SHT 3-7 FOR DIMENSIONS C & D.
  - RECOMMENDED PCB THICKNESS 1.60MM
  - PRODUCT SPECIFICATION: PS-99020-0001

CHANGE DOC. NO. EC NO: S2012-0965 DRW:NATSEE 2012/07/03 CHK:D:SKANG 2012/07/25 APPR:MLONG 2012/07/25	QUALITY SYMBOLS $F_{\Delta} = 0$ $F_{\square} = 0$ $F_{\nabla} = 0$	GENERAL TOLERANCES (UNLESS SPECIFIED) mm INCH 4 PLACES ± --- ± --- 3 PLACES ± --- ± --- 2 PLACES ± 0.20 ± --- 1 PLACE ± --- ± --- ANGULAR ± 3°	DIMENSION STYLE MM ONLY DRAWN BY: DB DATE: 1987/07/16 CHECKED BY: DB DATE: 1987/07/16 APPROVED BY: MLONG DATE: 2012/02/24	SCALE: NTS DESIGN UNITS: METRIC THIRD ANGLE PROJECTION	TITLE: C-GRID III SINGLE ROW RIGHT ANGLE HEADER MOLEX INCORPORATED DOCUMENT NO.: SD-90121-001 SHEET NO.: 1 OF 2	
	DRAFT WHERE APPLICABLE MUST REMAIN WITHIN DIMENSIONS		MATERIAL NO.: SEE TABLE SIZE: A3	THIS DRAWING CONTAINS INFORMATION THAT IS PROPRIETARY TO MOLEX INCORPORATED AND SHOULD NOT BE USED WITHOUT WRITTEN PERMISSION		

PLATING OPTIONS

PLATING	PLATING DESCRIPTION
A	3.00µm MIN TIN OVER 1.27MIN NICKEL OVERALL
E	0.38µm MIN GOLD IN SELECTED AREA (2 SIDES) AND 3.00µm MIN TIN IN SELECTED AREA AND 1.30µm MIN NICKEL OVERALL
F	0.76µm MIN GOLD IN SELECTED AREA (2 SIDES) AND 3.00µm MIN TIN IN SELECTED AREA AND 1.30µm MIN NICKEL OVERALL
G	0.05-0.10µm GOLD FLASH IN SELECTED AREA (2 SIDES) AND 3.00µm MIN TIN IN SELECTED AREA AND 1.30µm MIN NICKEL OVERALL

CIRCUIT SIZE	PLATING TYPE A	PLATING TYPE E	PLATING TYPE F	PLATING TYPE G
	PART NO.	PART NO.	PART NO.	PART NO.
1 X 1	90121-0121	90121-0761	90121-0921	90121-1081
1 X 2	-0122	-0762	-0922	-1082
1 X 3	-0123	-0763	-0923	-1083
1 X 4	-0124	-0764	-0924	-1084
1 X 5	-0125	-0765	-0925	-1085
1 X 6	-0126	-0766	-0926	-1086
1 X 7	-0127	-0767	-0927	-1087
1 X 8	-0128	-0768	-0928	-1088
1 X 9	-0129	-0769	-0929	-1089
1 X 10	-0130	-0770	-0930	-1090
1 X 11	-0131	-0771	-0931	-1091
1 X 12	-0132	-0772	-0932	-1092
1 X 13	-0133	-0773	-0933	-1093
1 X 14	-0134	-0774	-0934	-1094
1 X 15	-0135	-0775	-0935	-1095
1 X 16	-0136	-0776	-0936	-1096
1 X 17	-0137	-0777	-0937	-1097
1 X 18	-0138	-0778	-0938	-1098
1 X 19	-0139	-0779	-0939	-1099
1 X 20	-0140	-0780	-0940	-1100
1 X 21	-0141	-0781	-0941	-1101
1 X 22	-0142	-0782	-0942	-1102
1 X 23	-0143	-0783	-0943	-1103
1 X 24	-0144	-0784	-0944	-1104
1 X 25	-0145	-0785	-0945	-1105
1 X 26	-0146	-0786	-0946	-1106
1 X 27	-0147	-0787	-0947	-1107
1 X 28	-0148	-0788	-0948	-1108
1 X 29	-0149	-0789	-0949	-1109
1 X 30	-0150	-0790	-0950	-1110
1 X 31	-0151	-0791	-0951	-1111
1 X 32	-0152	-0792	-0952	-1112
1 X 33	-0153	-0793	-0953	-1113
1 X 34	-0154	-0794	-0954	-1114
1 X 35	-0155	-0795	-0955	-1115
1 X 36	-0156	-0796	-0956	-1116
1 X 37	-0157	-0797	-0957	-1117
1 X 38	-0158	-0798	-0958	-1118
1 X 39	-0159	-0799	-0959	-1119
1 X 40	90121-0160	90121-0800	90121-0960	90121-1120

DIM C (+0.20) ±.008 (6.75) .266

DIM D (+0.25) ±.010 (2.90) .114

<b>CHANGE DOC. NO.</b> EC NO: S2012-0965 DRW:ATSEE 2012/07/03 CHKD:SKANG 2012/07/25 APPR:MLONG 2012/07/25	QUALITY SYMBOLS	GENERAL TOLERANCES (UNLESS SPECIFIED)	DIMENSION STYLE	SCALE	DESIGN UNITS	THIRD ANGLE PROJECTION
	$F_A=0$ $F_G=0$ $F_P=0$	mm INCH 4 PLACES ± --- ± --- 3 PLACES ± --- ± --- 2 PLACES ± 0.20 ± --- 1 PLACE ± --- ± --- ANGULAR ± 3 °	MM ONLY	NTS	METRIC	☉ <input type="checkbox"/> <input checked="" type="checkbox"/>
	DRAWN BY: DB CHECKED BY: DB APPROVED BY: MLONG DATE: 1987/07/16 DATE: 1987/07/16 DATE: 2012/02/24	TITLE: C-GRID III SINGLE ROW RIGHT ANGLE HEADER MOLEX INCORPORATED	MATERIAL NO.: SEE TABLE DOCUMENT NO.: SD-90121-001	SHEET NO.: 2 OF 2		
	DRAFT WHERE APPLICABLE MUST REMAIN WITHIN DIMENSIONS	THIS DRAWING CONTAINS INFORMATION THAT IS PROPRIETARY TO MOLEX INCORPORATED AND SHOULD NOT BE USED WITHOUT WRITTEN PERMISSION				