



Chipsmall Limited consists of a professional team with an average of over 10 year of expertise in the distribution of electronic components. Based in Hongkong, we have already established firm and mutual-benefit business relationships with customers from,Europe,America and south Asia,supplying obsolete and hard-to-find components to meet their specific needs.

With the principle of “Quality Parts,Customers Priority,Honest Operation,and Considerate Service”,our business mainly focus on the distribution of electronic components. Line cards we deal with include Microchip,ALPS,ROHM,Xilinx,Pulse,ON,Everlight and Freescale. Main products comprise IC,Modules,Potentiometer,IC Socket,Relay,Connector.Our parts cover such applications as commercial,industrial, and automotives areas.

We are looking forward to setting up business relationship with you and hope to provide you with the best service and solution. Let us make a better world for our industry!



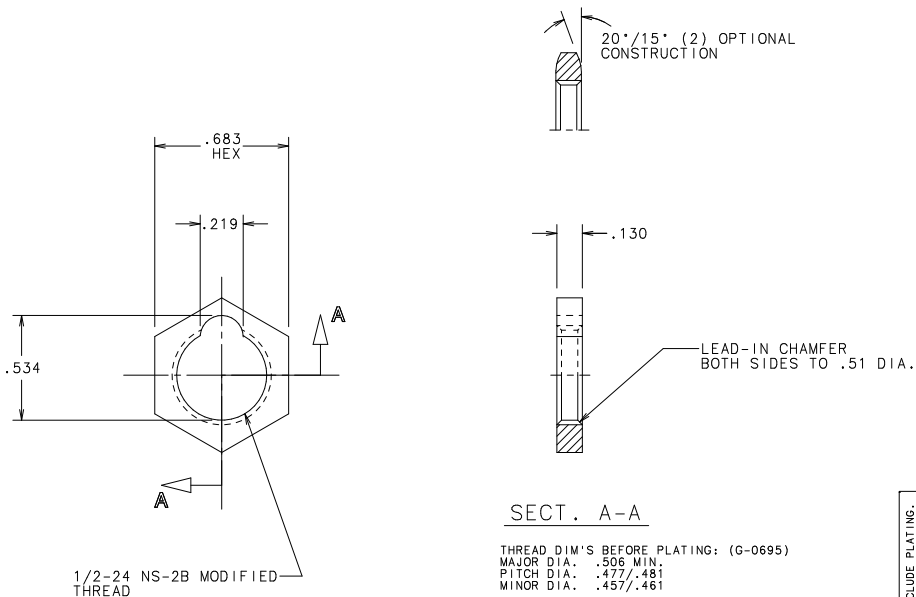
Contact us

Tel: +86-755-8981 8866 Fax: +86-755-8427 6832

Email & Skype: info@chipsmall.com Web: www.chipsmall.com

Address: A1208, Overseas Decoration Building, #122 Zhenhua RD., Futian, Shenzhen, China





THREAD DIM'S BEFORE PLATING: (G-0695)
 MAJOR DIA. .506 MIN.
 PITCH DIA. .477/.481
 MINOR DIA. .457/.461

THREAD DIM'S AFTER PLATING: (G-0684)
 MAJOR DIA. .505 MIN.
 PITCH DIA. .476/.481
 MINOR DIA. .456/.461

FINISH NOTE:

ELECTRODEPOSITED ZINC COATING WITH SUPPLEMENTARY FINISH PER: ASTM B633-98
 CLASSIFICATION Fe/Zn 12 SERVICE CONDITION SC3 TYPE II YELLOW CHROMATE CONVERSION COATING (SEE NOTE 4)

NO	COMPONENT NO	DESCRIPTION	QTY/M	U/M

BILL OF MATERIAL			
CDPLIES TO	MATL SPEC (AS SUPPLIED)	FINISH	SEE FINISH NOTE & NOTE 4
1	9 18 DRW	JMB	DATE 2/18/98 SCALE 2=1
2	10 19	CHK	DATE SUPER DRW
3	12 20	APPD	DATE RAW STK WT
4	13 21		
5	14 23		
6	15 33		
7	16 43		
8	17 53		

TOLERANCE UNLESS OTHERWISE SPECIFIED
 TWO PLACE DEC ±.01 FRACTION ±1
 THREE PLACE DEC ±.005 ANGULAR ±1°

HEX NUT

TITLE		CHK	APD

HEXAGON DRWG. NO. 903-012

Littelfuse® AT ILLINOIS 60016

UNLESS OTHERWISE SPECIFIED, DIMENSIONS DO NOT INCLUDE PLATING.

CPK DENOTES CRITICAL CHARACTERISTICS.
 CPK DENOTES CPK DIMENSIONS - MINIMUM CPK VALUE
 DENOTES A CHARACTERISTIC THAT PROVIDES AN INDICATION OF THE PROCESSING VARIATION TO BE EXPECTED FOR MEASUREMENT OF THIS CHARACTERISTIC TO THE TOLERANCE SPECIFIED IN THE DRAWING. THE USER SHOULD FOLLOW THE INSPECTION INSTRUCTIONS.

CPK DENOTES CP DIMENSIONS - MINIMUM CP VALUE
 DENOTES CP DIMENSIONS - MINIMUM CP VALUE
 WHICH BE WITHIN THE DIMENSIONAL LIMITATIONS
 FOR THE MAXIMUM TOOL LIFE.

UNCONTROLLED DOCUMENT

NOTES:

1. AXIS OF THREAD TO BE ⊥ WITHIN 1" TO FACE OF NUT. PITCH DIA. & MAJOR DIA. TO BE CONCENTRIC WITH MINOR DIA. WITHIN .007 T.I.R.
2. PART MUST SPIN FREELY ON "GO" GAGE. PART MAY ENTER "NO-GO" GAGE A MAXIMUM OF TWO THREADS. USE GAGE G-0695 BEFORE PLATING. USE GAGE G-0684 AFTER PLATING.
3. UNPLATED PARTS TO BE PROTECTED AGAINST OXIDATION UNTIL PLATING; PLATING TO BE DONE AS SOON AS POSSIBLE AFTER FABRICATION.
4. PLATED PARTS SHALL MEET THE SALT SPRAY REQUIREMENTS ASTM B-117 96 HOUR SALT SPRAY TEST. (CERTIFICATION REQUIRED).
5. VENDOR & L/F THREAD GAGE CORRELATION REQUIRED.
6. LITTELFUSE TO PLACE 100 NUTS IN BAG -896-259.