



Chipsmall Limited consists of a professional team with an average of over 10 year of expertise in the distribution of electronic components. Based in Hongkong, we have already established firm and mutual-benefit business relationships with customers from,Europe,America and south Asia,supplying obsolete and hard-to-find components to meet their specific needs.

With the principle of “Quality Parts,Customers Priority,Honest Operation,and Considerate Service”,our business mainly focus on the distribution of electronic components. Line cards we deal with include Microchip,ALPS,ROHM,Xilinx,Pulse,ON,Everlight and Freescale. Main products comprise IC,Modules,Potentiometer,IC Socket,Relay,Connector.Our parts cover such applications as commercial,industrial, and automotives areas.

We are looking forward to setting up business relationship with you and hope to provide you with the best service and solution. Let us make a better world for our industry!



## Contact us

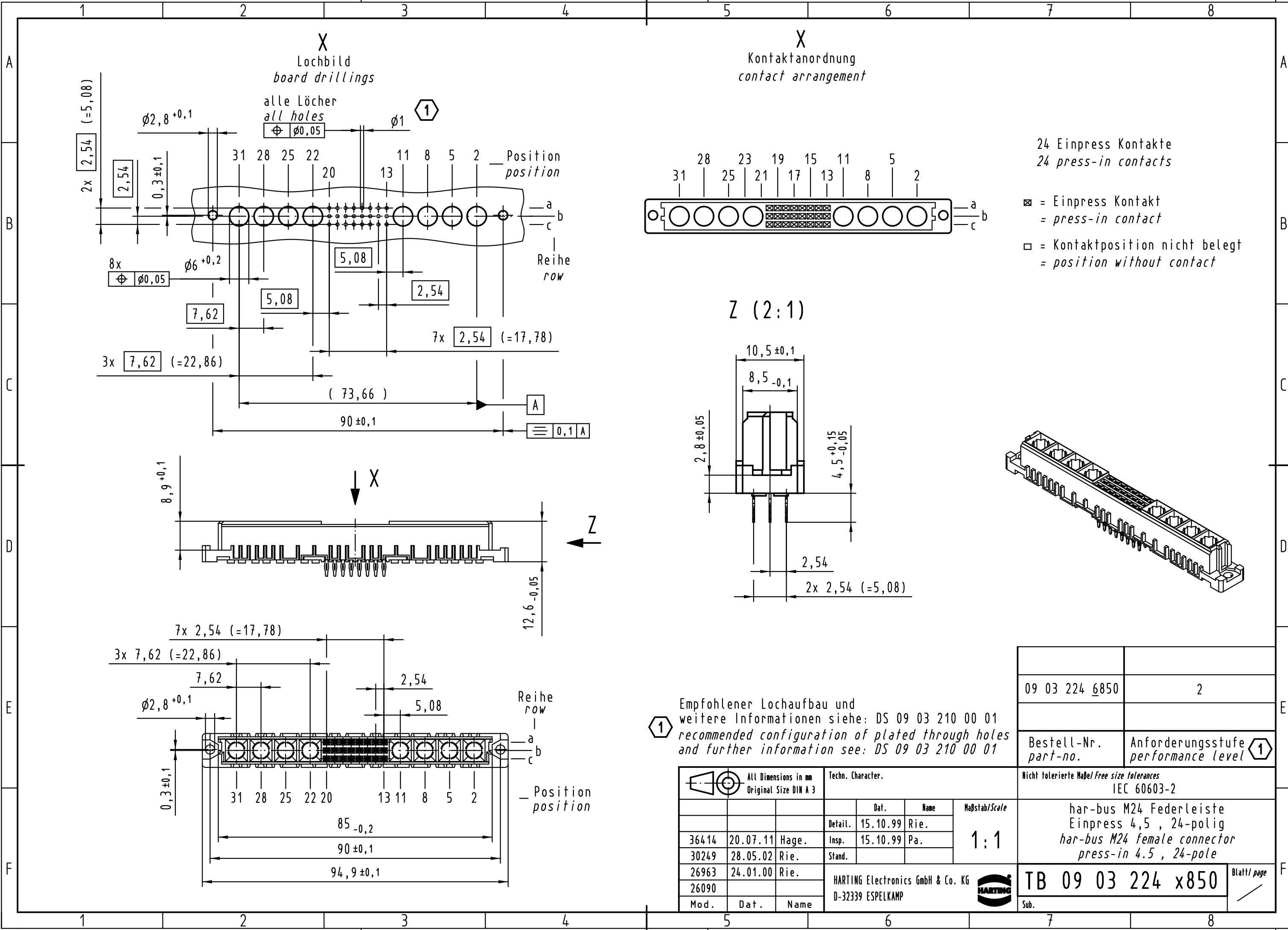
Tel: +86-755-8981 8866 Fax: +86-755-8427 6832

Email & Skype: info@chipsmall.com Web: www.chipsmall.com

Address: A1208, Overseas Decoration Building, #122 Zhenhua RD., Futian, Shenzhen, China



Alle Rechte vorbehalten/ All rights reserved



24 Einpress Kontakte  
24 press-in contacts

- ⊗ = Einpress Kontakt  
= press-in contact
- = Kontaktposition nicht belegt  
= position without contact

1 Empfohlener Lochaufbau und weitere Informationen siehe: DS 09 03 210 00 01  
recommended configuration of plated through holes and further information see: DS 09 03 210 00 01

All Dimensions in mm Original Size DIN A 3		Techn. Character.		
Mod.	Dat.	Name	Dat.	Name
36414	20.07.11	Hage.	Detail.	15.10.99 Rie.
30249	28.05.02	Rie.	Insp.	15.10.99 Pa.
26963	24.01.00	Rie.	Stand.	
26090				
HARTING Electronics GmbH & Co. KG D-32339 ESPELKAMP				

09 03 224 6850	2
Bestell-Nr. part-no.	Anforderungsstufe performance level 1
Nicht tolerierte Maße/Free size tolerances IEC 60603-2	
har-bus M24 Federleiste Einpress 4,5 , 24-polig har-bus M24 female connector press-in 4.5 , 24-pole	
TB 09 03 224 x850	Blatt/ page
Sub.	