



Chipsmall Limited consists of a professional team with an average of over 10 year of expertise in the distribution of electronic components. Based in Hongkong, we have already established firm and mutual-benefit business relationships with customers from,Europe,America and south Asia,supplying obsolete and hard-to-find components to meet their specific needs.

With the principle of “Quality Parts,Customers Priority,Honest Operation,and Considerate Service”,our business mainly focus on the distribution of electronic components. Line cards we deal with include Microchip,ALPS,ROHM,Xilinx,Pulse,ON,Everlight and Freescale. Main products comprise IC,Modules,Potentiometer,IC Socket,Relay,Connector.Our parts cover such applications as commercial,industrial, and automotives areas.

We are looking forward to setting up business relationship with you and hope to provide you with the best service and solution. Let us make a better world for our industry!



Contact us

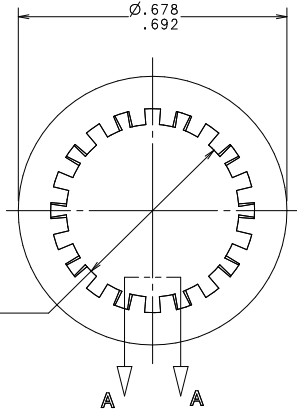
Tel: +86-755-8981 8866 Fax: +86-755-8427 6832

Email & Skype: info@chipsmall.com Web: www.chipsmall.com

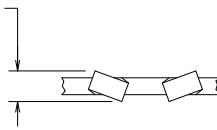
Address: A1208, Overseas Decoration Building, #122 Zhenhua RD., Futian, Shenzhen, China



Ø .440 I.D.
.452



.030
MIN.



SECTION A-A
TOOTH DETAIL
SCALE 10=1

UNLESS OTHERWISE SPECIFIED, DIMENSIONS DO NOT INCLUDE PLATING.

CPK DENOTES CRITICAL CHARACTERISTICS.

CPK DENOTES CPK DIMENSIONS - MINIMUM CPK VALUE

DENOTES A CHARACTERISTIC THAT PROVIDES AN INDICATION OF THE TIGHTNESS OF TOLERANCE AND THE MEASUREMENT PROCEDURE TO BE USED FOR MEASUREMENT OF THIS CHARACTERISTIC. THE TIGHTNESS OF TOLERANCE AND THE MEASUREMENT PROCEDURE TO BE USED FOR MEASUREMENT OF THIS CHARACTERISTIC ARE SPECIFIED IN THE INSTRUCTIONS.

CPK DENOTES CP DIMENSIONS - MINIMUM CP VALUE
CPK SHALL BE WITHIN THE DIMENSIONAL LIMITATIONS SPECIFIED IN THE DIMENSIONAL TOLERANCE TABLE FOR MAXIMUM TOOL LIFE.

NO	COMPONENT NO	DESCRIPTION	QTY/M	U/M
4				
3				
2				
1				

BILL OF MATERIAL		MATERIAL SPEC		FINISH		NICKEL PLATE	
LTR	REVISION	CDPLIES TO	DRW	DATE	SCALE	SUPER DRW	LBS/M
C	38845C-REVISE & REDRAWN IN NEW STRUCTURE 12/15/97 KAM	1	9 18	11/5/97	4:1		
		2	10 19				
		3	12 20				
		4	13 21				
		5	14 23				
		6	15 33				
		7	16 43				
		8	17 53				
TOLERANCE UNLESS OTHERWISE SPECIFIED TWO PLACE DEC ±.01 THREE PLACE DEC ±.005 ANGULAR ±1°							
TITLE INTERNAL LOCKWASHER (7/16)							

HEBROON	DRWS. MGR.	HEBROON	DRWS. MGR.
C			
Litetefuse® DES PLAINES, ILL INOIS 60016		-905-041	

UNCONTROLLED DOCUMENT