



Chipsmall Limited consists of a professional team with an average of over 10 year of expertise in the distribution of electronic components. Based in Hongkong, we have already established firm and mutual-benefit business relationships with customers from,Europe,America and south Asia,supplying obsolete and hard-to-find components to meet their specific needs.

With the principle of “Quality Parts,Customers Priority,Honest Operation,and Considerate Service”,our business mainly focus on the distribution of electronic components. Line cards we deal with include Microchip,ALPS,ROHM,Xilinx,Pulse,ON,Everlight and Freescale. Main products comprise IC,Modules,Potentiometer,IC Socket,Relay,Connector.Our parts cover such applications as commercial,industrial, and automotives areas.

We are looking forward to setting up business relationship with you and hope to provide you with the best service and solution. Let us make a better world for our industry!



Contact us

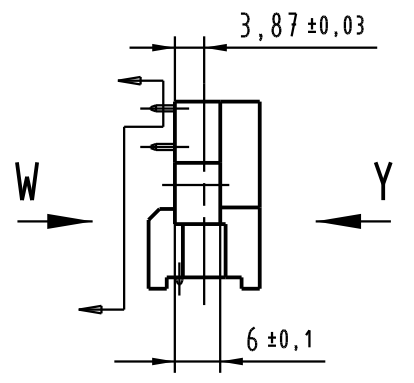
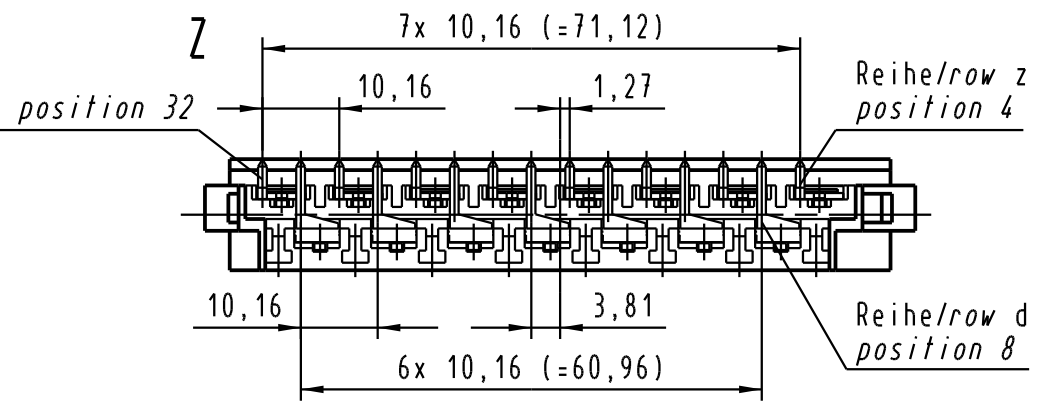
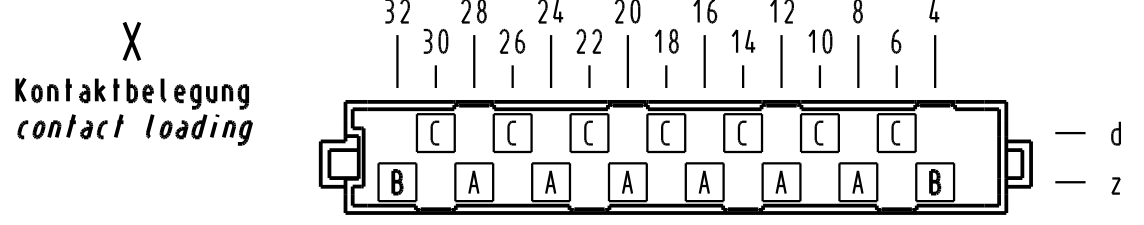
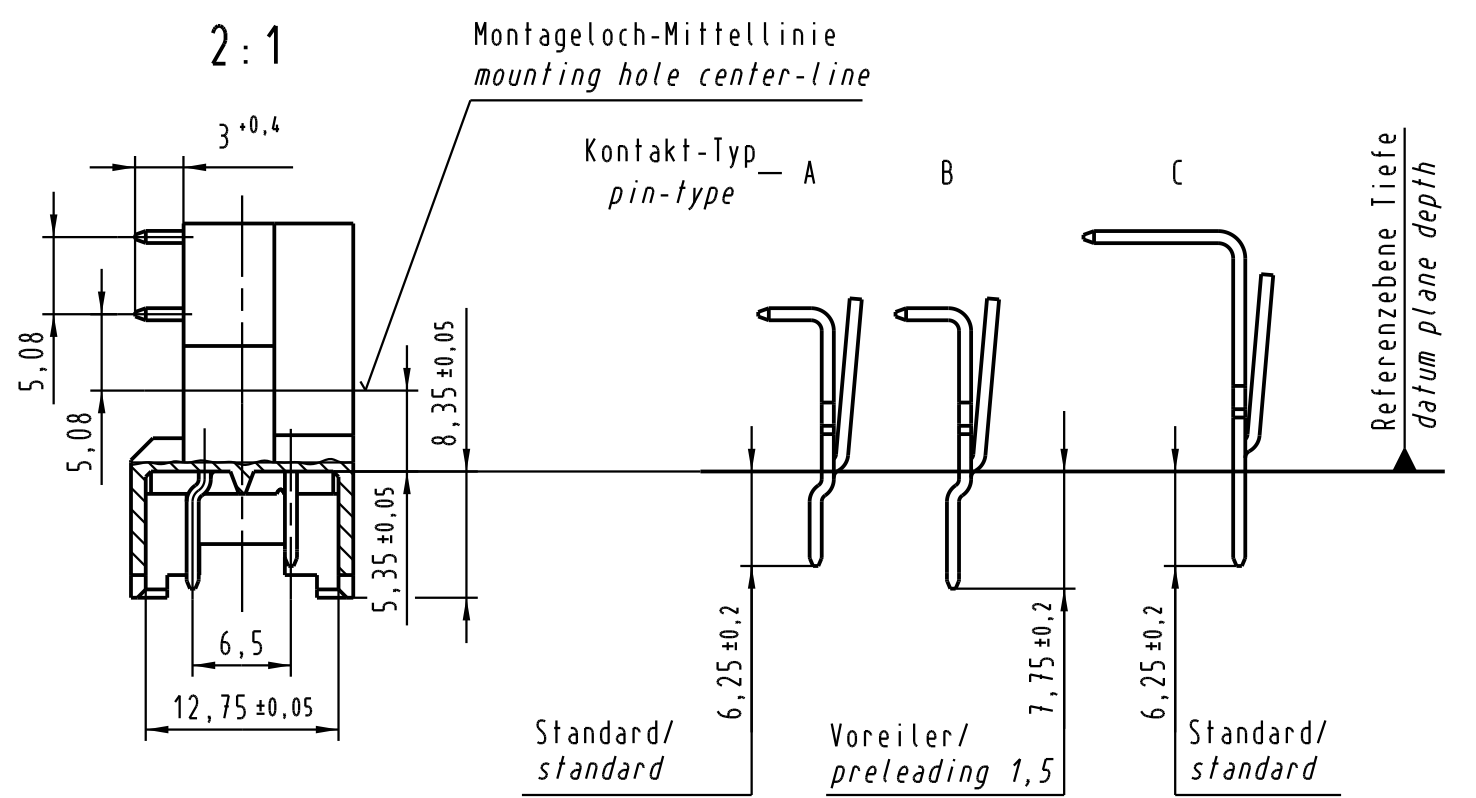
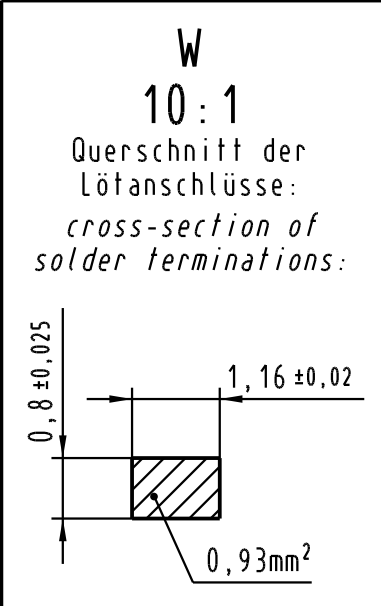
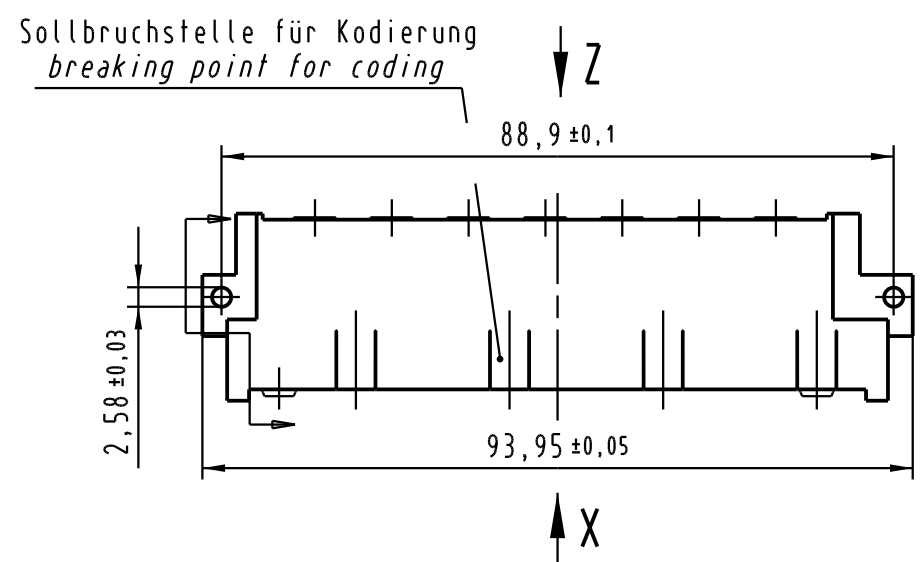
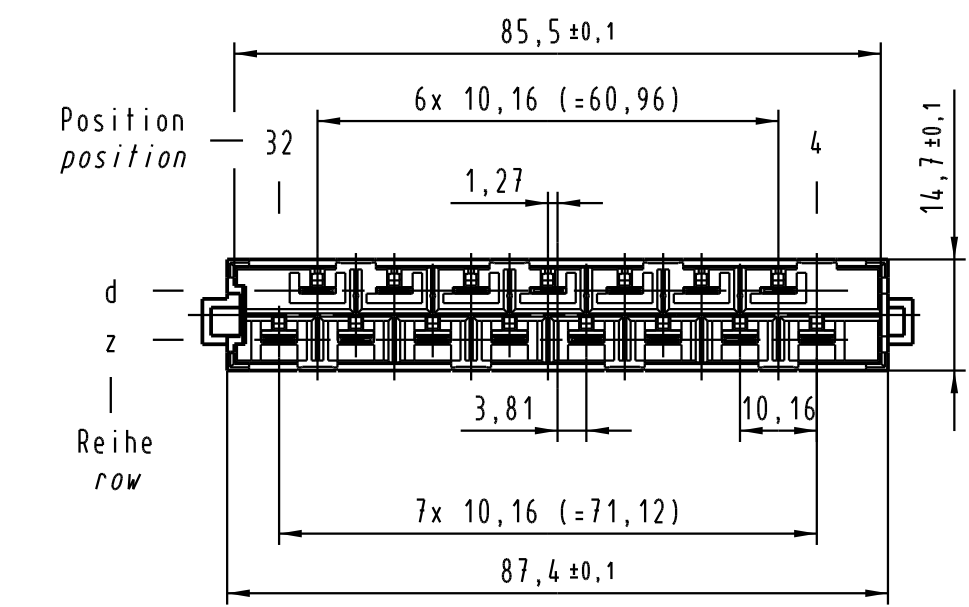
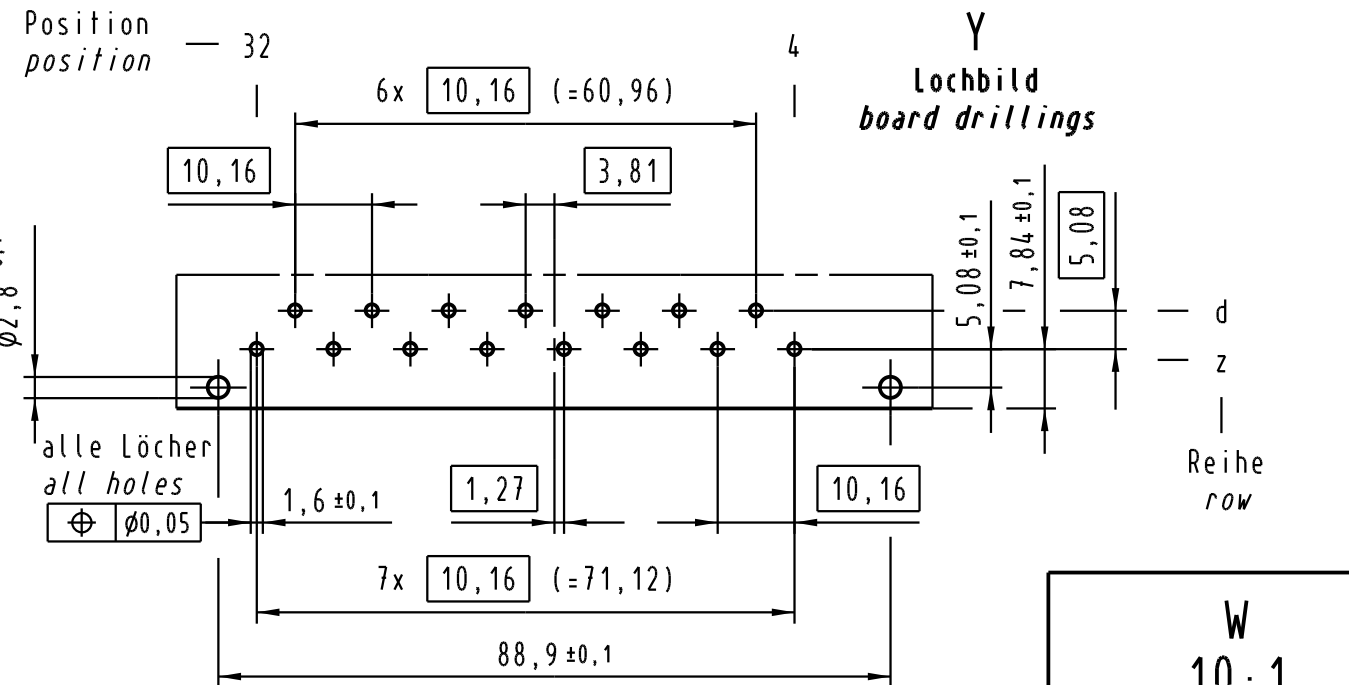
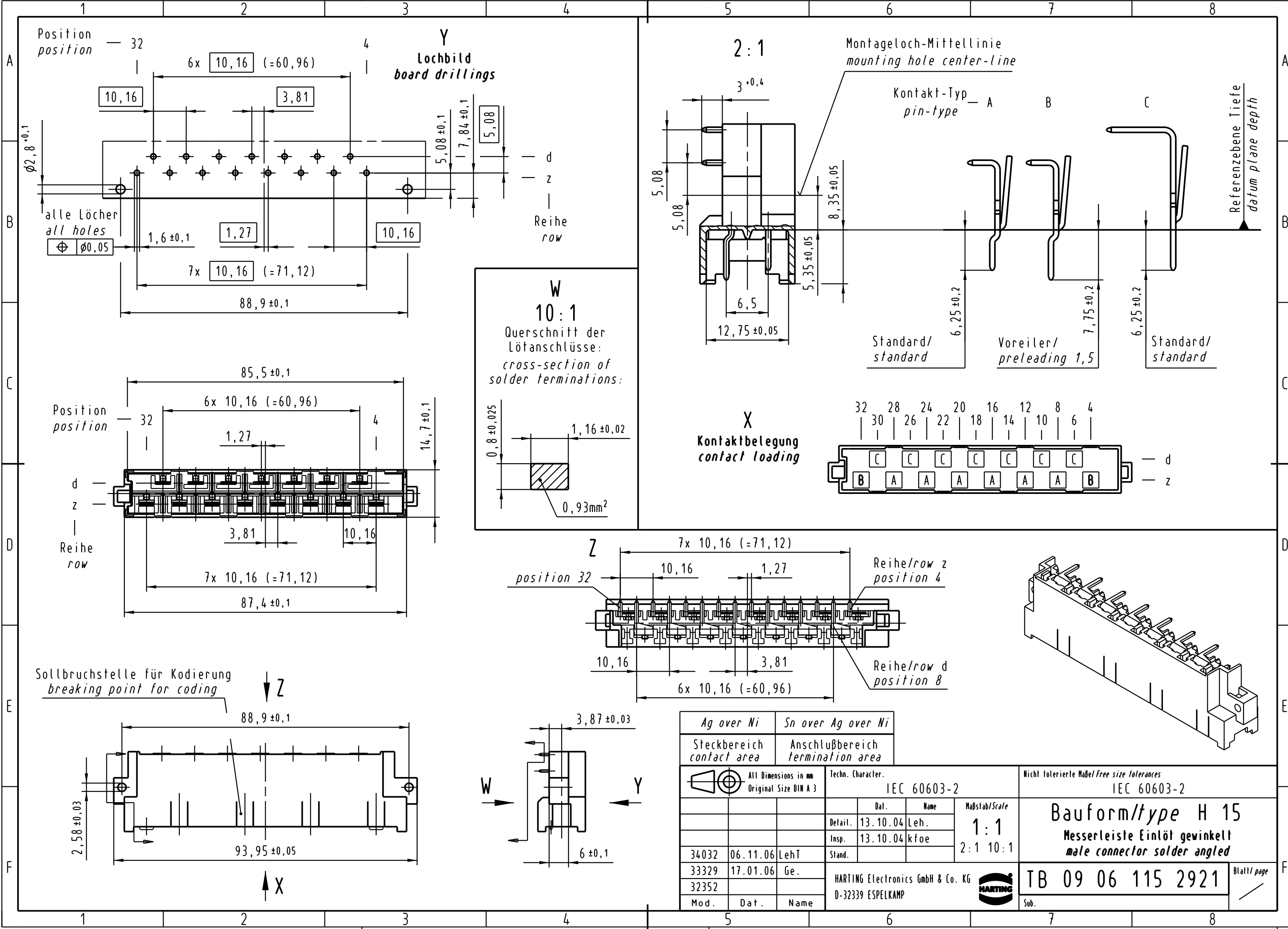
Tel: +86-755-8981 8866 Fax: +86-755-8427 6832

Email & Skype: info@chipsmall.com Web: www.chipsmall.com

Address: A1208, Overseas Decoration Building, #122 Zhenhua RD., Futian, Shenzhen, China



Alle Rechte vorbehalten. All rights reserved



Ag over Ni	Sn over Ag over Ni	Techn. Character.		Nicht tolerierte Maße / Free size tolerances	
Steckbereich contact area	Anschlußbereich termination area	IEC 60603-2		IEC 60603-2	
All Dimensions in mm Original Size DIN A 3		Dat.		Name	
		13.10.04		Leh.	
		13.10.04		kfoe	
34032	06.11.06	LehT	Stand.	Maßstab/Scale	
33329	17.01.06	Ge.		1:1	
32352				2:1 10:1	
Mod.	Dat.	Name	HARTING Electronics GmbH & Co. KG		Bauform/type H 15 Messerleiste Einlöt gewinkelt male connector solder angled
			D-32339 ESPELKAMP		
				TB 09 06 115 2921	
				Sub.	

