



Chipsmall Limited consists of a professional team with an average of over 10 year of expertise in the distribution of electronic components. Based in Hongkong, we have already established firm and mutual-benefit business relationships with customers from,Europe,America and south Asia,supplying obsolete and hard-to-find components to meet their specific needs.

With the principle of “Quality Parts,Customers Priority,Honest Operation,and Considerate Service”,our business mainly focus on the distribution of electronic components. Line cards we deal with include Microchip,ALPS,ROHM,Xilinx,Pulse,ON,Everlight and Freescale. Main products comprise IC,Modules,Potentiometer,IC Socket,Relay,Connector.Our parts cover such applications as commercial,industrial, and automotives areas.

We are looking forward to setting up business relationship with you and hope to provide you with the best service and solution. Let us make a better world for our industry!



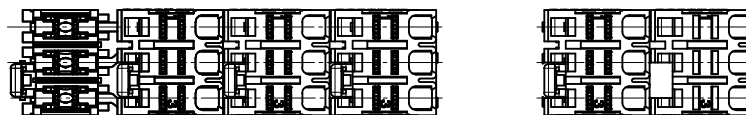
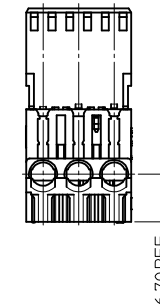
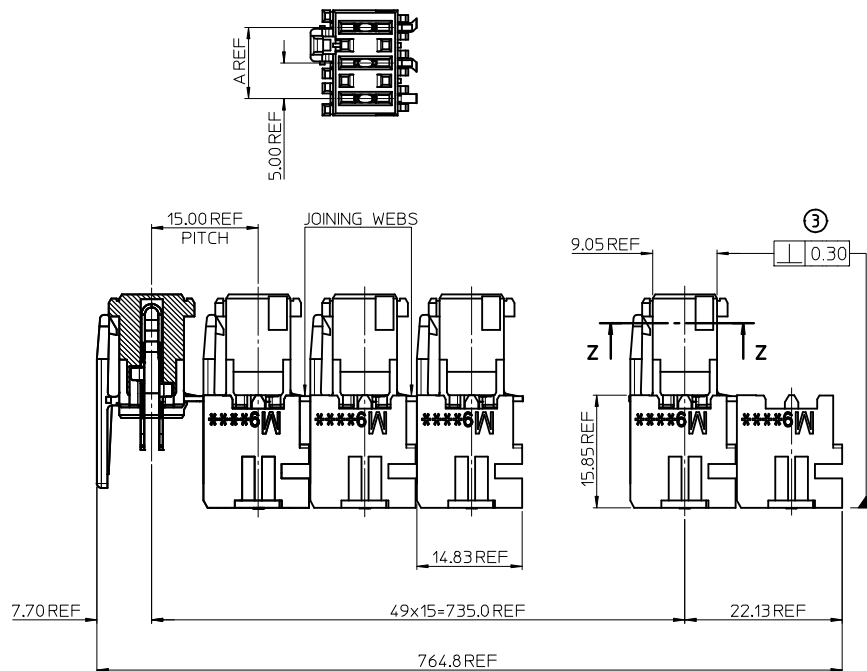
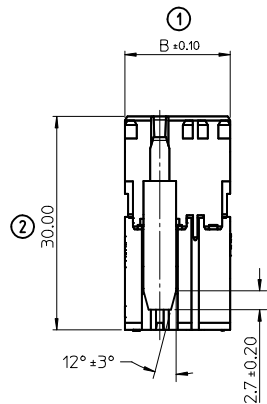
## Contact us

Tel: +86-755-8981 8866 Fax: +86-755-8427 6832

Email & Skype: info@chipsmall.com Web: www.chipsmall.com

Address: A1208, Overseas Decoration Building, #122 Zhenhua RD., Futian, Shenzhen, China





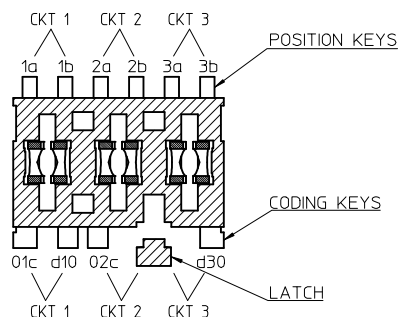
NOTES:

1. MATERIALS:  
HOUSING: UNFILLED NYLON 6/6, RATED UL94-V2  
FOR COLOUR, SEE CHARTS ON SUBSEQUENT SHEETS  
TERMINAL: PHOSPHOR BRONZE, 0.50 THICK REF  
PLATING: 2µm MINIMUM SILVER IN CONTACT AREA  
0.10µm MINIMUM SILVER FLASH ALLOWER
2. PRODUCT SPECIFICATION: PS-99020-0037
3. APPLICATION SPECIFICATION: AS-99033-0004
4. SEE SUBSEQUENT SHEETS FOR PART NUMBERS SHOWING THE VARIOUS CODING, KEYING AND LATCHING OPTIONS

LAST INSPECTION NUMBER USED: 3

CKT SIZE	DIM A	DIM B
2	5.00	9.80
3	10.00	14.80
4	15.00	19.80

CKT SIZE	NO OF CONNECTORS PER TRAY: 99025-0021	NO OF CONNECTORS PER BOX
2	1200	3600
3	750	2250
4	600	1800



Z-Z  
KEYING, CODING & LATCH IDENTIFICATION  
(3 CIRCUIT EXAMPLE SHOWN)

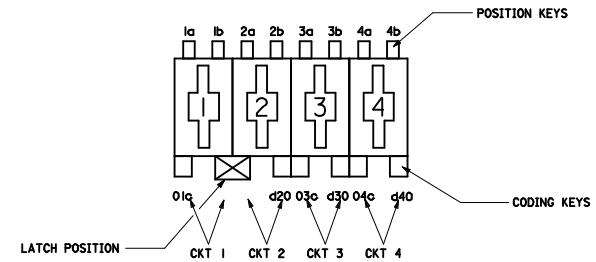
ORIGINAL RELEASE  
EC NO: IFC2016-0564  
DRAWN: J MURPHY 2015/10/15  
CHKD:  
APPR: MSHAMMAN 2015/11/02

QUALITY SYMBOLS	GENERAL TOLERANCES (UNLESS SPECIFIED)	DIMENSION STYLE	SCALE	DESIGN UNITS	THIRD ANGLE PROJECTION
▽=0	mm INCH	MM ONLY	2:1	METRIC	THIRD ANGLE PROJECTION
▽=0	4 PLACES ± --- ± ---	DRAWN BY DSHEA	DATE 2013/02/01	TITLE	RAST 5 INDIRECT FEMALE 16 AMPS
	3 PLACES ± --- ± ---	CHECKED BY SMCGREEVY	DATE 2013/03/12		
	2 PLACES ± 0.10 ± ---	APPROVED BY STGRIFFIN	DATE 2013/04/08		
	1 PLACE ± 0.20 ± ---	MATERIAL NO.			
	0 PLACE ± --- ± ---	SEE SHEETS 2&3			
	ANGULAR ± 2 °	THIS DRAWING CONTAINS INFORMATION THAT IS PROPRIETARY TO MOLEX INCORPORATED AND SHOULD NOT BE USED WITHOUT WRITTEN PERMISSION			

DESCRIPTION	DOCUMENT NO.	SHEET NO.
RAST 5 INDIRECT FEMALE 16 AMPS	SD-90835-001	1 OF 3

MOLEX PART NO	HOUSING NO.	CIRCUIT SIZE	COLOUR	POSITION KEYS	CODING KEYS	LATCH POSITION	CONFIGURATION	REF
90835-0001 90835-0034	90835-9001 90835-9002	2	NATURAL PURPLE RED	1a 1b 2a 2b	01c d20	1/2		K00
90835-0003	90835-9001	2	NATURAL	1b 2a	01c d20	1/2		K01
90835-0045	90835-9003	2	PINK RED	1a 2b	01c	1/2		K02
90835-0035	90835-9002	2	PURPLE RED	2a	01c d20	1/2		K03
90835-0036 90835-0019	90835-9004 90835-9001	2	VIOLET NATURAL	1a 2b	d20	1/2		K05
90835-0037	90835-9003	2	PINK RED	1b 2b	01c	1/2		K09
90835-0057	90835-9001	2	NATURAL	1a	01c d20	1/2		K12
90835-0038	90835-9002	2	PURPLE RED	2b	01c d20	1/2		K15
90835-0039	90835-9003	2	PINK RED	1a 1b 2a 2b	01c	1/2		K33
90835-0040 90835-0041 90835-0059	90835-9004 90835-9005 90835-9001	2	VIOLET BROWN NATURAL	1a 1b 2a 2b	d20	1/2		K34
90835-0042	90835-9005	2	BROWN	1b 2b	d20	1/2		K35

MOLEX PART NO	HOUSING NO.	CIRCUIT SIZE	COLOUR	POSITION KEYS	CODING KEYS	LATCH POSITION	CONFIGURATION	REF
90835-0043	90835-9006	2	ORANGE	1a 1b	NONE	1/2		K40
90835-0044	90835-9006	2	ORANGE	1a 1b 2a 2b	NONE	1/2		K41
90835-0058	90835-9001	2	NATURAL	1b	d20	1/2		K49



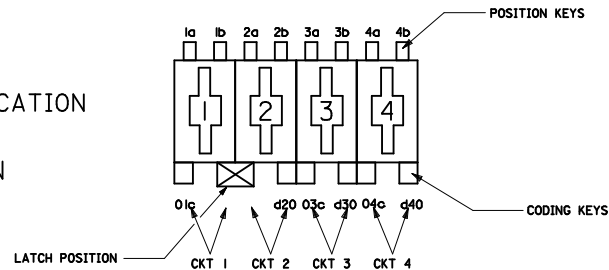
KEYING, CODING & LATCH IDENTIFICATION  
(4 CKT EXAMPLE SHOWN)  
VIEW IN MATING DIRECTION

<b>SEE SHEET 1</b> EC NO: IPG2016-0564 DRAWN: J MURPHY 2015/10/15 CHKD: APPR: MSHAMMAN 2015/11/02 DESCRIPTION	QUALITY SYMBOLS = 0 = 0	GENERAL TOLERANCES (UNLESS SPECIFIED) <table border="1"> <thead> <tr> <th></th> <th>mm</th> <th>INCH</th> </tr> </thead> <tbody> <tr> <td>4 PLACES</td> <td>± ---</td> <td>± ---</td> </tr> <tr> <td>3 PLACES</td> <td>± ---</td> <td>± ---</td> </tr> <tr> <td>2 PLACES</td> <td>± 0.10</td> <td>± ---</td> </tr> <tr> <td>1 PLACE</td> <td>± 0.20</td> <td>± ---</td> </tr> <tr> <td>0 PLACE</td> <td>± ---</td> <td>± ---</td> </tr> </tbody> </table>		mm	INCH	4 PLACES	± ---	± ---	3 PLACES	± ---	± ---	2 PLACES	± 0.10	± ---	1 PLACE	± 0.20	± ---	0 PLACE	± ---	± ---	DIMENSION STYLE <b>MM ONLY</b>	SCALE <b>2:1</b>	DESIGN UNITS <b>METRIC</b>	THIRD ANGLE PROJECTION
		mm	INCH																					
	4 PLACES	± ---	± ---																					
	3 PLACES	± ---	± ---																					
2 PLACES	± 0.10	± ---																						
1 PLACE	± 0.20	± ---																						
0 PLACE	± ---	± ---																						
DRAWN BY DSHEA	DATE 2013/02/01	TITLE <b>RAST 5 INDIRECT FEMALE 16 AMPS</b>																						
CHECKED BY SMCGREEVY	DATE 2013/03/12																							
APPROVED BY STGRIFFIN	DATE 2013/04/08	MATERIAL NO. <b>SEE TABLES</b>	DOCUMENT NO. <b>SD-90835-001</b>	SHEET NO. <b>2 OF 3</b>	THIS DRAWING CONTAINS INFORMATION THAT IS PROPRIETARY TO MOLEX INCORPORATED AND SHOULD NOT BE USED WITHOUT WRITTEN PERMISSION																			

MOLEX PART NO	HOUSING NO.	CIRCUIT SIZE	COLOUR	POSITION CODING	CODING KEYS	LATCH POSITION	CONFIGURATION	REF
90835-0500	90835-9021	3	NATURAL	1a 1b 2a 2b 3a 3b	01c d20 03c d30	1/2		K00
90835-0501	90835-9022	3	NATURAL	1a 1b 2a 2b 3a 3b	01c d10 02c d30	2/3		K90
90835-0502	90835-9021	3	NATURAL	1b	01c d20	1/2		K01
90835-0518	90835-9023	3	PURPLE RED	1a 1b 2a 2b 3a 3b	d10 d30	2/3		K38
90835-0519	90835-9024	3	VIOLET	1a 1b 2a 2b 3a 3b	NONE	2/3		K39
90835-0520	90835-9025	3	BROWN	1a 1b 2a 2b 3a 3b	d20	1/2		K40
90835-0521	90835-9023	3	PURPLE RED	2a	d10 d30	2/3		K44
90835-0522	90835-9025	3	BROWN	1b 2a	d20	1/2		K45
90835-0523	90835-9024	3	VIOLET	1b 3b	NONE	2/3		K46
90835-0534	90835-9026	3	PINK RED	1a 1b 2a 2b 3a 3b	d10	2/3		K41
90835-0536	90835-9022	3	NATURAL	2a	d10 d30	2/3		K44
90835-0537	90835-9022	3	NATURAL	3b	d10 d30	2/3		K101
90835-0538	90835-9024	3	VIOLET	1b 2a 2b 3b	NONE	2/3		K124

MOLEX PART NO	HOUSING NO.	CIRCUIT SIZE	COLOUR	POSITION CODING	CODING KEYS	LATCH POSITION	CONFIGURATION	REF
90835-1251	90835-9101	4	NATURAL	1a 1b 2a 2b 3a 3b 4a 4b	01c d20 03c d40	1/2 3/4		K00
90835-1254	90835-9101	4	NATURAL	1b	03c d40	1/2 3/4		K01
90835-1268	90835-9102	4	VIOLET	1a 1b 2a 2b 3a 3b 4a 4b	01c	1/2 3/4		K34
90835-1269	90835-9102	4	VIOLET	1a 4b	01c	1/2 3/4		K02
90835-1273	90835-9101	4	NATURAL	1a 3a 3b	01c d20 d40	1/2 3/4		K32
90835-1281	90835-9103	4	PINK RED	1a 1b 2a 2b 3a 3b 4a 4b	01c 03c	1/2 3/4		K76
90835-1283	90835-9103	4	PINK RED	1a 2b 3b 4a	01c 03c d40	1/2 3/4		K65
90835-1284	90835-9103	4	PINK RED	1a 1b 2b 3b 4a	d20 03c d40	1/2 3/4		K--
90835-1285	90835-9103	4	PINK RED	1b	01c 03c	1/2 3/4		K114

KEYING, CODING & LATCH IDENTIFICATION  
(4 CKT EXAMPLE SHOWN)  
VIEW IN MATING DIRECTION



SEE SHEET 1 EC NO: IPG2016-0564 DRAWN: MURPHY 2015/10/15 CHKD: APPR: MSHAMMAN 2015/11/02	QUALITY SYMBOLS	GENERAL TOLERANCES (UNLESS SPECIFIED)	DIMENSION STYLE	SCALE	DESIGN UNITS	THIRD ANGLE PROJECTION
	▽=0	mm INCH	MM ONLY	2:1	METRIC	
	▽=0	4 PLACES ± --- ± ---	DRAWN BY DATE	TITLE		
		3 PLACES ± --- ± ---	DSHEA 2013/02/01	RAST 5 INDIRECT FEMALE 16 AMPS		
	2 PLACES ± 0.10 ± ---	CHECKED BY DATE	DOCUMENT NO.			
	1 PLACE ± 0.20 ± ---	SMCGREEVY 2013/03/12	SD-90835-001			
	0 PLACE ± --- ± ---	APPROVED BY DATE	SHEET NO.			
		STGRIFFIN 2013/04/08	3 OF 3			
	ANGULAR ± 2 °	MATERIAL NO.	THIS DRAWING CONTAINS INFORMATION THAT IS PROPRIETARY TO MOLEX INCORPORATED AND SHOULD NOT BE USED WITHOUT WRITTEN PERMISSION			
	DRAFT WHERE APPLICABLE MUST REMAIN WITHIN DIMENSIONS	SIZE				
		A2				