



Chipsmall Limited consists of a professional team with an average of over 10 year of expertise in the distribution of electronic components. Based in Hongkong, we have already established firm and mutual-benefit business relationships with customers from,Europe,America and south Asia,supplying obsolete and hard-to-find components to meet their specific needs.

With the principle of "Quality Parts,Customers Priority,Honest Operation,and Considerate Service",our business mainly focus on the distribution of electronic components. Line cards we deal with include Microchip,ALPS,ROHM,Xilinx,Pulse,ON,Everlight and Freescale. Main products comprise IC,Modules,Potentiometer,IC Socket,Relay,Connector.Our parts cover such applications as commercial,industrial, and automotives areas.

We are looking forward to setting up business relationship with you and hope to provide you with the best service and solution. Let us make a better world for our industry!



Contact us

Tel: +86-755-8981 8866 Fax: +86-755-8427 6832

Email & Skype: info@chipsmall.com Web: www.chipsmall.com

Address: A1208, Overseas Decoration Building, #122 Zhenhua RD., Futian, Shenzhen, China



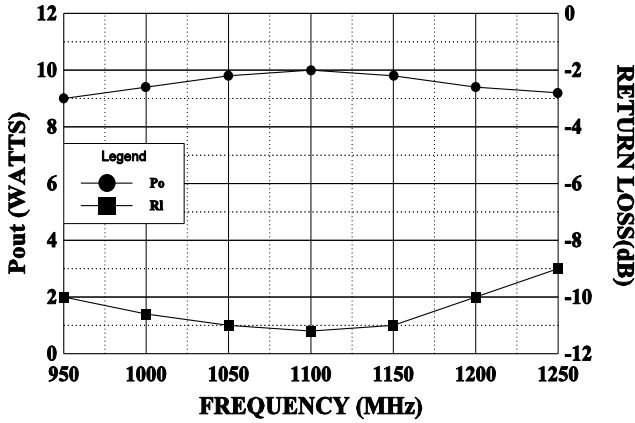


GHz TECHNOLOGY
RF · MICROWAVE · SILICON POWER TRANSISTORS

0912-7

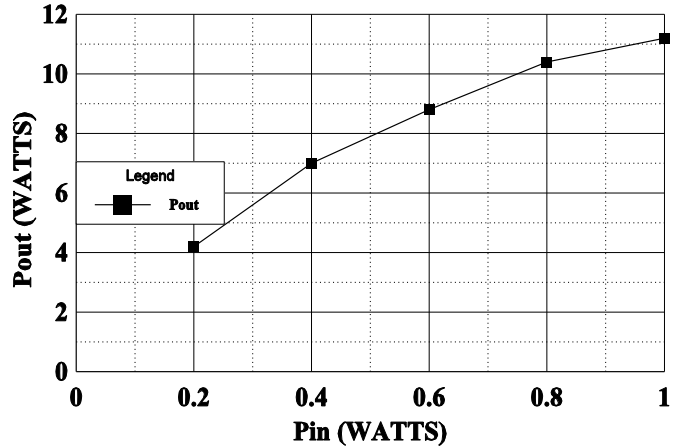
BROADBAND Pout & RETURN LOSS

Pin = 1 Watt Pk, Vcc = 50 Volts



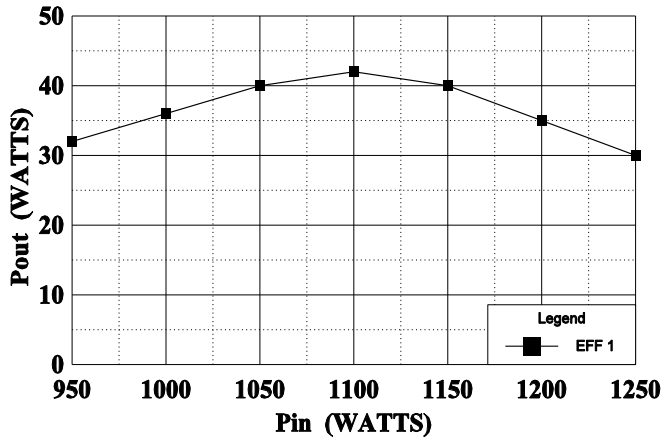
POWER OUTPUT vs POWER INPUT

Vcc = 50V, Frequency 1090 MHz



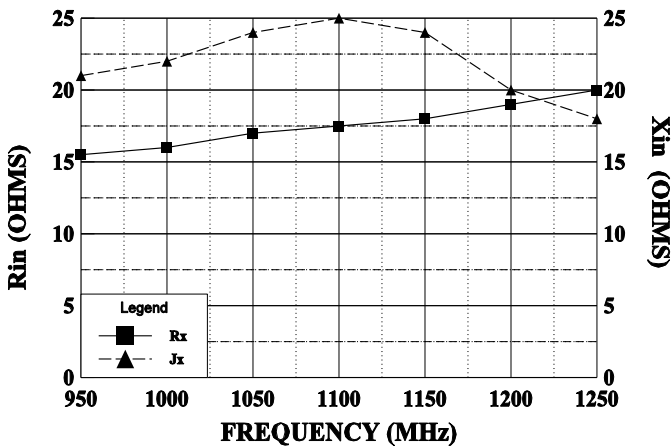
EFFICIENCY vs FREQUENCY

Vcc 50 Volts, Pin = 1 Watt



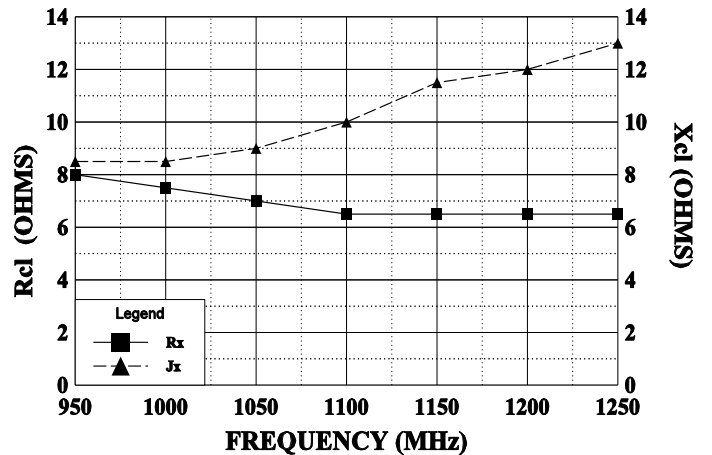
SERIES INPUT IMPEDANCE vs FREQUENCY

Vcc = 50 V, Pin = 1 W

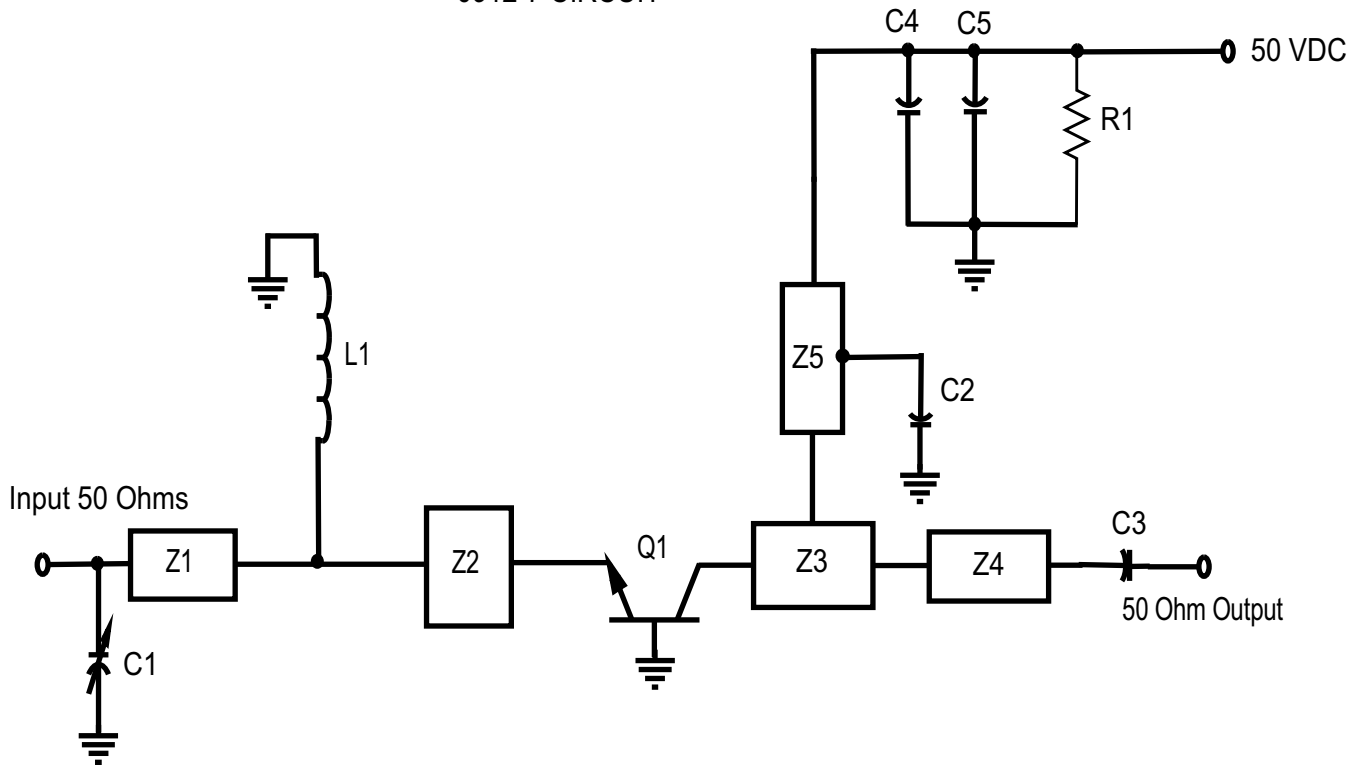


SERIES LOAD IMPEDANCE vs FREQUENCY

Vcc = 50 V, Pin = 1W



0912-7 CIRCUIT



PC Board Material .010" Dielectric Teflon Fiberglass

Z1=50 Ω , .062" w X .45"L
 Z2=5 Ω , .033" w X .23"L
 Z3=10 Ω , .06" w X .40"L
 Z4=50 Ω = .027" w X any convenient length
 Z5=50 Ω , .12" w X .86"L
 C1=Capacitor, .35-3.5pF Piston Trimmer
 C2=Capacitor, 47pF ATC

Note: Slide C2 along Z5 for best tuning
 C3=Capacitor, 47pF ATC
 C4=Capacitor, 100 pF ATC
 C5=Capacitor, 12mfd, 75 VDC, Electrolytic
 L1=Inductor, #18 wire, 1.5" long
 R1=Resistor, 10KW, 1/4W
 Q1=Transistor, GHz 0912-7

All electrical lengths taken at 1.09 GHz