



Chipsmall Limited consists of a professional team with an average of over 10 year of expertise in the distribution of electronic components. Based in Hongkong, we have already established firm and mutual-benefit business relationships with customers from,Europe,America and south Asia,supplying obsolete and hard-to-find components to meet their specific needs.

With the principle of “Quality Parts,Customers Priority,Honest Operation,and Considerate Service”,our business mainly focus on the distribution of electronic components. Line cards we deal with include Microchip,ALPS,ROHM,Xilinx,Pulse,ON,Everlight and Freescale. Main products comprise IC,Modules,Potentiometer,IC Socket,Relay,Connector.Our parts cover such applications as commercial,industrial, and automotives areas.

We are looking forward to setting up business relationship with you and hope to provide you with the best service and solution. Let us make a better world for our industry!



Contact us

Tel: +86-755-8981 8866 Fax: +86-755-8427 6832

Email & Skype: info@chipsmall.com Web: www.chipsmall.com

Address: A1208, Overseas Decoration Building, #122 Zhenhua RD., Futian, Shenzhen, China



10 9 8 7 6 5 4 3 2 1

F
PART NO. 91236-0002
DWG. NO. SDA-91236

F

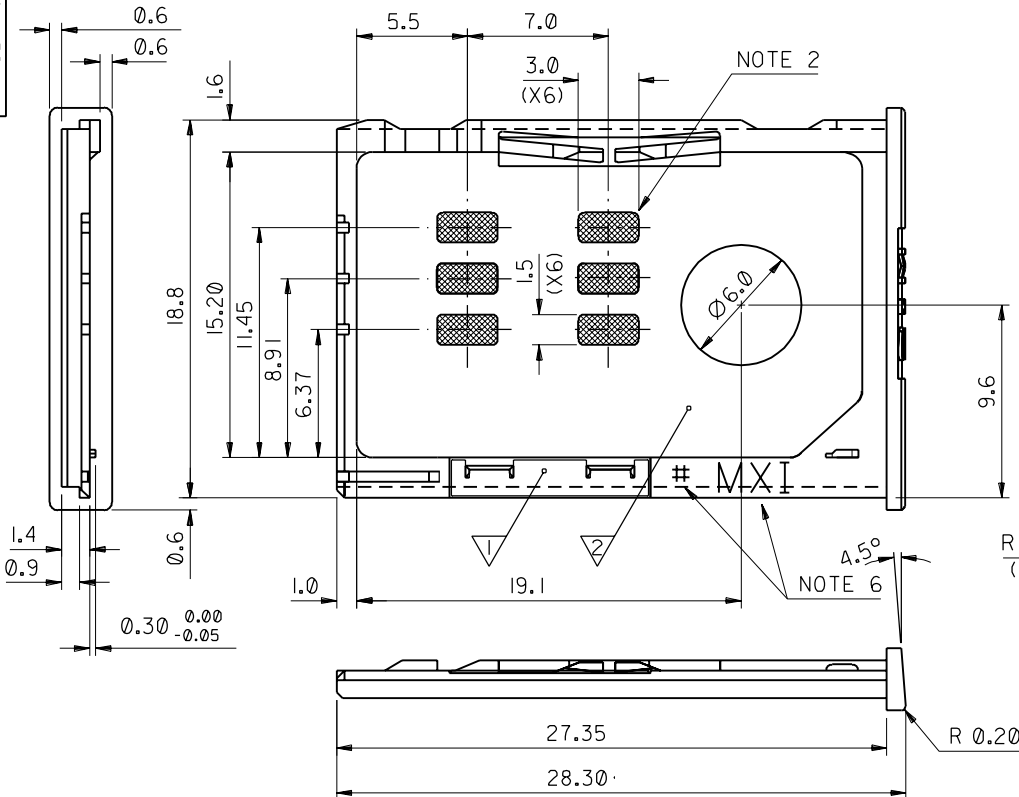
E

D

C

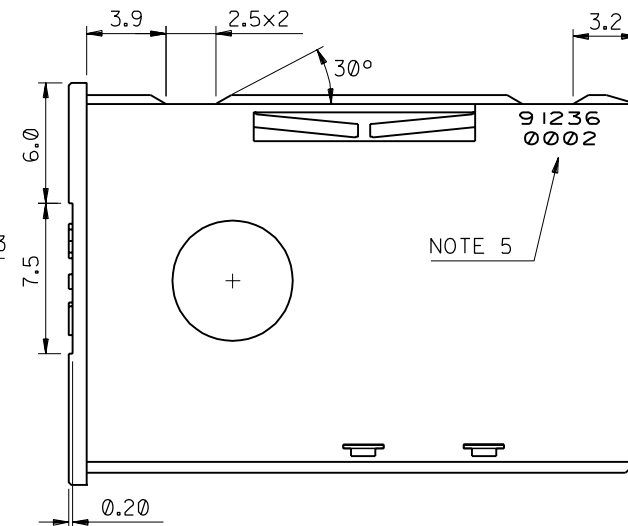
B

A



NOTES:

1. PROTRUSION OF BRIDGE TERMINAL FROM HOUSING IS 0.08 MAX.
2. POLISHED SURFACE FINISH IN SHADED AREA.
3. LETTERING 1.8 HIGH & RAISED BY 0.20.
4. SEE PRODUCT SPECIFICATION PS-99020-0071.
5. PART I.D. TO BE 0.8 HIGH & RELIEVED 0.1 BELOW SURFACE.
6. MOLEX LOGO 'MXI' & CAVITY NUMBER '#' TO BE 1.0 HIGH & RAISED 0.1max ABOVE SURFACE



ITEM	COMPONENT	QTY	MATERIAL
1	TERMINAL	1	0.15 PHOSPHOR BRONZE 0.1um MIN Au OVER Pd/Ni IN CONTACT AREA
2	HOUSING	1	GF PBT, BLACK

FOR PREVIOUS
DRAWING ISSUES
SEE MRI.

SEE SHEET 1.
EC NO. G
DRAWN: FDUCCAN 01/12/10
CHK: APPR:

REV	DESCRIPTION	QUALITY SYMBOLS
		MAJOR CRITICAL

GENERAL TOLERANCES: (UNLESS SPECIFIED)		
	mm	INCH
4 PLACES	±0.	±.
3 PLACES	±0.	±.
2 PLACES	±0.05	±.
1 PLACE	±0.10	±.
ANGULAR: ± °		
DRAFT WHERE APPLICABLE MUST REMAIN WITHIN DIMENSIONS		

SCALE	DESIGN UNITS
4:1	<input checked="" type="checkbox"/> mm <input type="checkbox"/> INCH
DRAWN BY & DATE FINDORAK 00/08/28	
CHECKED BY & DATE D.HANNON 00/08/28	
APPROVED BY & DATE M.WILHITE 00/08/28	
CAD FILENAME S91236X2.DGN	

DIMENSIONS:		SHT	REV
<input type="checkbox"/> mm <input type="checkbox"/> INCH	<input checked="" type="checkbox"/> mm <input type="checkbox"/> ONLY		REVISE ON CAD ONLY
THIRD ANGLE PROJECTION			
TITLE: CARD HOLDER			
MOLEX INCORPORATED			
MATERIAL NO. 91236-0002		DRAWING NO. SDA-91236	
SHEET NO. 2 OF		SIZE B	