



Chipsmall Limited consists of a professional team with an average of over 10 year of expertise in the distribution of electronic components. Based in Hongkong, we have already established firm and mutual-benefit business relationships with customers from,Europe,America and south Asia,supplying obsolete and hard-to-find components to meet their specific needs.

With the principle of "Quality Parts,Customers Priority,Honest Operation,and Considerate Service",our business mainly focus on the distribution of electronic components. Line cards we deal with include Microchip,ALPS,ROHM,Xilinx,Pulse,ON,Everlight and Freescale. Main products comprise IC,Modules,Potentiometer,IC Socket,Relay,Connector.Our parts cover such applications as commercial,industrial, and automotives areas.

We are looking forward to setting up business relationship with you and hope to provide you with the best service and solution. Let us make a better world for our industry!



Contact us

Tel: +86-755-8981 8866 Fax: +86-755-8427 6832

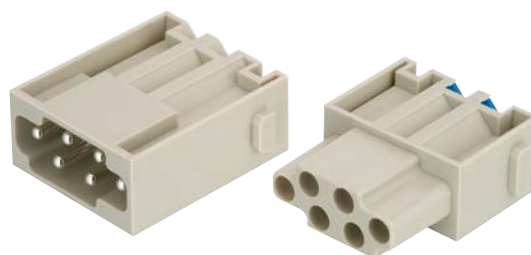
Email & Skype: info@chipsmall.com Web: www.chipsmall.com

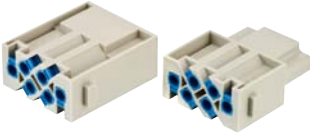
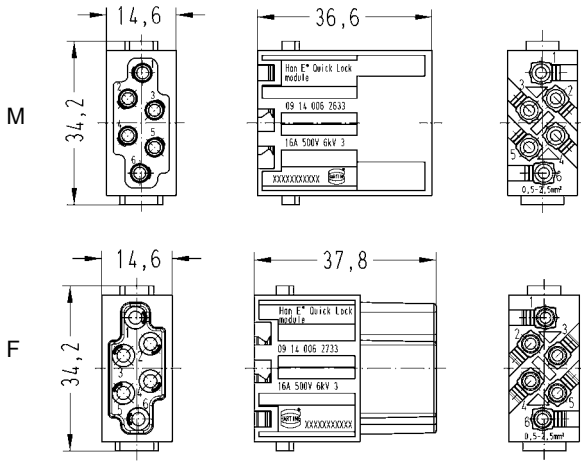
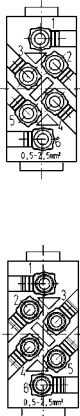
Address: A1208, Overseas Decoration Building, #122 Zhenhua RD., Futian, Shenzhen, China



Number of contacts

8



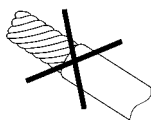
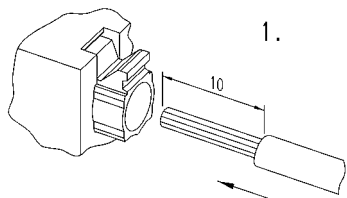
Identification	Part number		Drawing	Dimensions in mm
	Male insert (M)	Female insert (F)		
<p>Quick Lock termination</p> 	09 14 006 26 33	09 14 006 27 33		<p>Contact arrangement view from termination side</p> 

Assembly manual

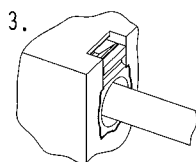
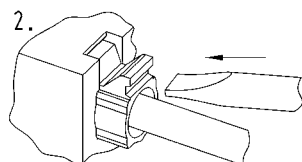
Removal manual

Remove cable jacket and strip the fine stranded wires

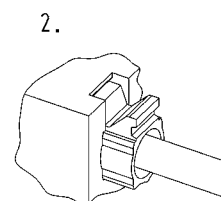
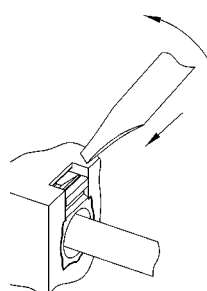
Do not twist the fine stranded wires!



Push fine stranded wires into the Han-Quick Lock® contact and push the blue slide with a screw driver¹⁾ until it comes to a stop



Please insert the screw driver¹⁾ at an angle of 45° into the opening and lever the black side out



¹⁾ Screw driver: 0.4 x 2.5 mm

Features

- Innovative Han-Quick Lock® termination technology
- Field assembly without special tools
- Compatible to Han® E module with crimp terminal
- Reduced wiring times

Technical characteristics

Specifications	DIN EN 60 664-1 DIN EN 61 984
----------------	----------------------------------

Inserts

Number of contacts	6
Electrical data acc. to EN 61 984	16 A 500 V 6 kV 3
Rated current	16 A
Rated voltage	500 V
Rated impulse voltage	6 kV
Pollution degree	3

Insulation resistance	≥ 10 ¹⁰ Ω
Material	polycarbonate
Limiting temperatures	-40 °C ... +125 °C
Flammability acc. to UL 94	V 0
Mechanical working life - mating cycles	≥ 500

Contacts

Material	copper alloy
Surface	
- hard-silver plated	3 μm Ag
- hart gold plated	2 μm Au over 3 μm Ag Ni
Contact resistance	≤ 1 mΩ
Quick Lock termination	
- mm ²	0.5 ... 2.5 mm ²
- AWG	20 ... 14